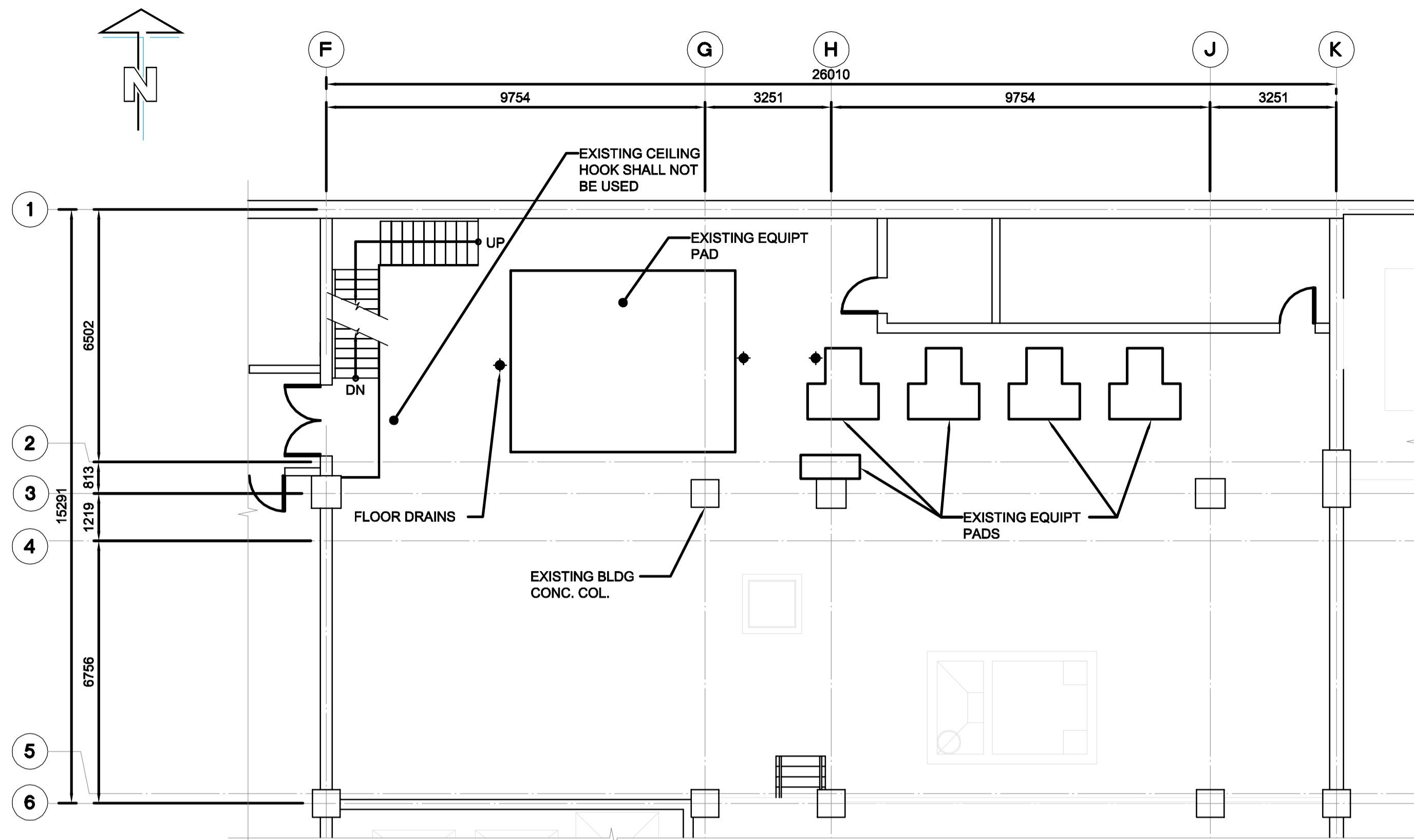
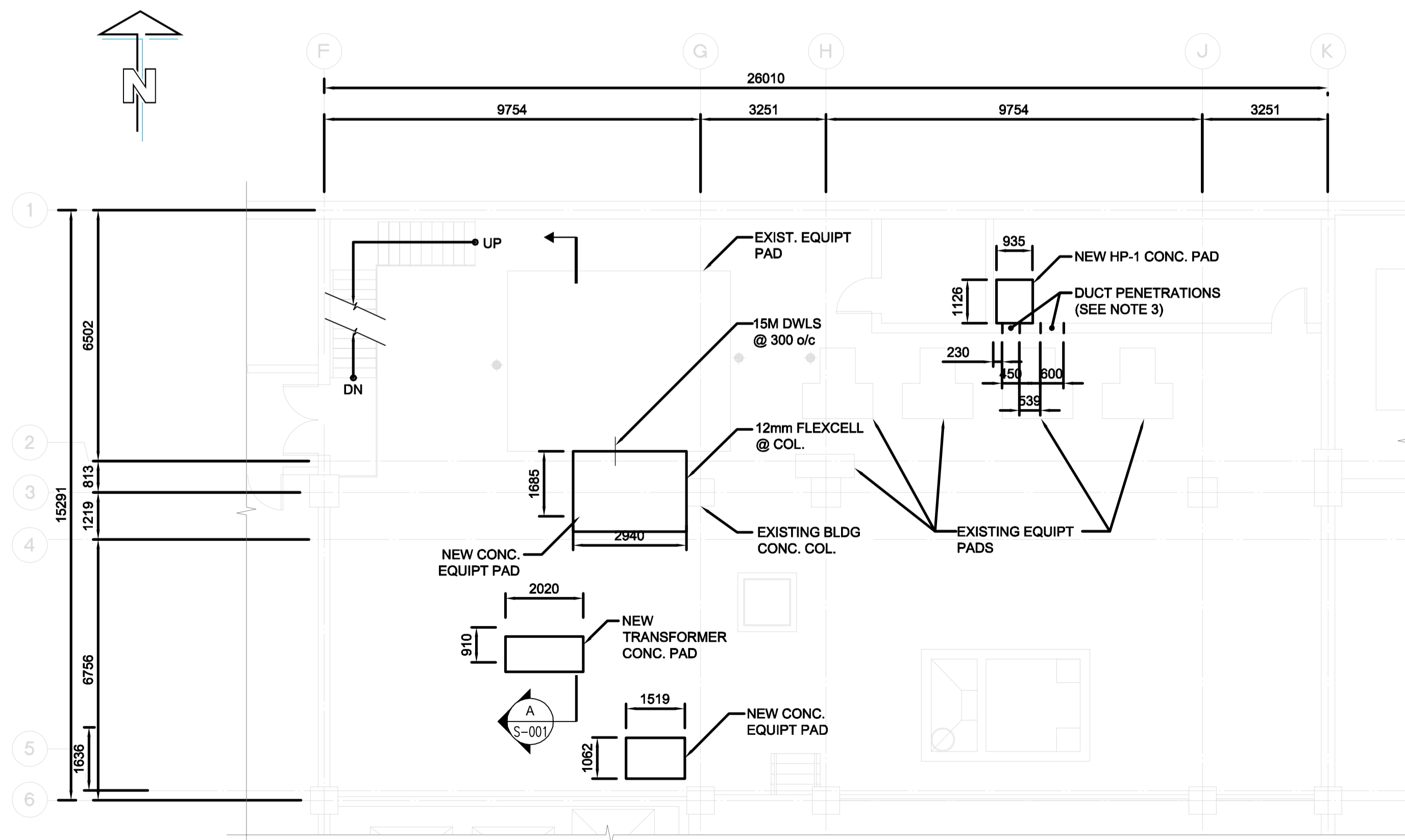


NOTES:



**EXISTING SUB BASEMENT FLOOR PLAN**

SCALE: 1:100mm



**NEW SUB BASEMENT FLOOR PLAN**

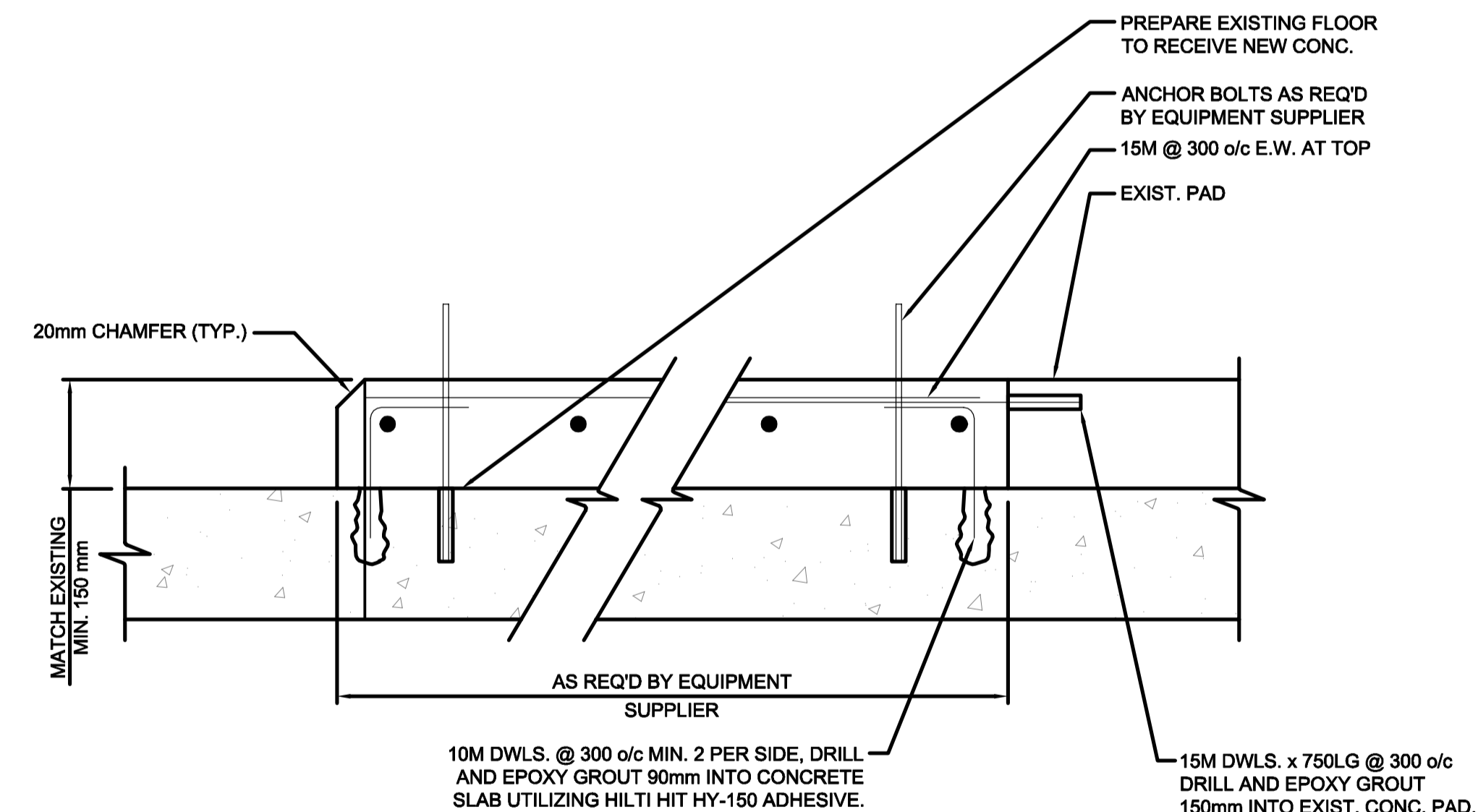
SCALE: 1:100mm

**CONCRETE NOTES**

- TEST CONCRETE IN ACCORDANCE WITH CAN/CSA A23.2. TEST RESULTS SHALL BE SUBMITTED TO CONTRACT ADMINISTRATOR. CONTRACTOR TO NOTIFY THE CONTRACT ADMINISTRATOR 48 HOURS IN ADVANCE OF ALL CONCRETE CASTS.
- CONCRETE SHALL MEET THE FOLLOWING REQUIREMENTS: FOR NON-STRUCTURAL INTERIOR CONCRETE PADS: MINIMUM COMPRESSIVE STRENGTH (MPa): 32 @ 28 DAYS CSA EXPOSURE CLASS: C-2
- PROVIDE CLEAR 50mm CONCRETE COVER OVER REBAR AS FOLLOWS:
- CONCRETE CONSTRUCTION TOLERANCES:  
 CROSS SECTIONAL DIMENSIONS  
 300mm OR LESS ± 8 mm  
 300mm TO 1000mm ± 12 mm  
 1000mm OR GREATER ± 20 mm
- PROVIDE 20mm CHAMFER ON ALL EXPOSED CONCRETE CORNERS.
- VERIFY SIZE AND LOCATION OF ALL OPENINGS, CURBS AND EQUIPMENT PADS WITH PROCESS, MECHANICAL AND ELECTRICAL DRAWINGS AND PROCESS, MECHANICAL AND ELECTRICAL CONTRACTORS. MAJOR OPENINGS NOT SHOWN TO BE VERIFIED WITH CONTRACT ADMINISTRATOR.

**REINFORCING STEEL NOTES**

- DEFORMED BARS CONFORMING TO CAN/CSA G30.18, GRADE 400. LAP SPLICES AS PER CSA A23.3.
- REINFORCING WORK SHALL BE IN ACCORDANCE WITH CSA 23.1 AND CSA 23.3.
- UNLESS SPECIFIED OTHERWISE HEREIN, TOLERANCES FOR REINFORCING STEEL REQUIREMENTS:
  - A) CONCRETE COVER  
 ALL SECTIONS ± 12 mm  
 COVER SHALL IN NO CASE BE REDUCED BY MORE THAN 1/3 OF SPECIFIED COVER
  - B) LOCATION  
 SECTIONS < 200 ± 8 mm  
 SECTIONS 200 TO 600 ± 12 mm  
 ALL OTHERS ± 20 mm
  - C) LOCATION OF BAR ENDS ± 50 mm



**A EQUIPMENT HOUSEKEEPING PAD**

S-001 SCALE: N.T.S.

**NOTES:**

- FOR ALL HOUSEKEEPING PADS, SEE MECH'L DWG FOR EXACT SIZES AND LOCATIONS.
- EPOXY PAINT FINISH FOR ALL NEW AND EXISTING HOUSEKEEPING PADS.
- MAKE GOOD ALL REPAIRS TO MATCH EXISTING WALL FIRE RATING IS REQUIRED.



This drawing has been prepared for the use of AECOM's client and may not be used, reproduced or relied upon by third parties, except as agreed by AECOM and its client, as required by law or for use by governmental reviewing agencies. AECOM accepts no responsibility, and denies any liability whatsoever, to any party that modifies this drawing without AECOM's express written consent. Do not scale this document. All measurements must be obtained from stated dimensions.

No.	REVISION/DESCRIPTION	BY	DATE
0	ISSUED FOR TENDER	GLG	2011.11.03

SEAL

DATE	GS	CHECKED	GDP	DESIGNED	GDP	APPROVED	PVL
2011.09.02		USER					

THE CITY OF WINNIPEG  
 PLANNING, PROPERTY AND  
 DEVELOPMENT DEPARTMENT  
 MUNICIPAL ACCOMMODATIONS DIVISION  
 3-65 GARRY STREET, R3C 4K4

PROJECT  
**ADMINISTRATION & COUNCIL BUILDING**  
 REPLACEMENT OF COOLING PLANT - 510 MAIN STREET  
 BID OPPORTUNITY NO. 673-2011  
 510 MAIN STREET, WINNIPEG, MANITOBA

SHEET TITLE  
**STRUCTURAL**  
 SUB BASEMENT FLOOR PLAN  
 EQUIPMENT PAD

**APEGM**  
 Certificate of Authorization  
 AECOM Canada Ltd.  
 No. 4671 Date: \_\_\_\_\_

DRN	CHK	DES	ENG	IDR

AECOM REVIEW

SCALE	PROJECT No:	SHEET No:
NTS	60220937	S-001