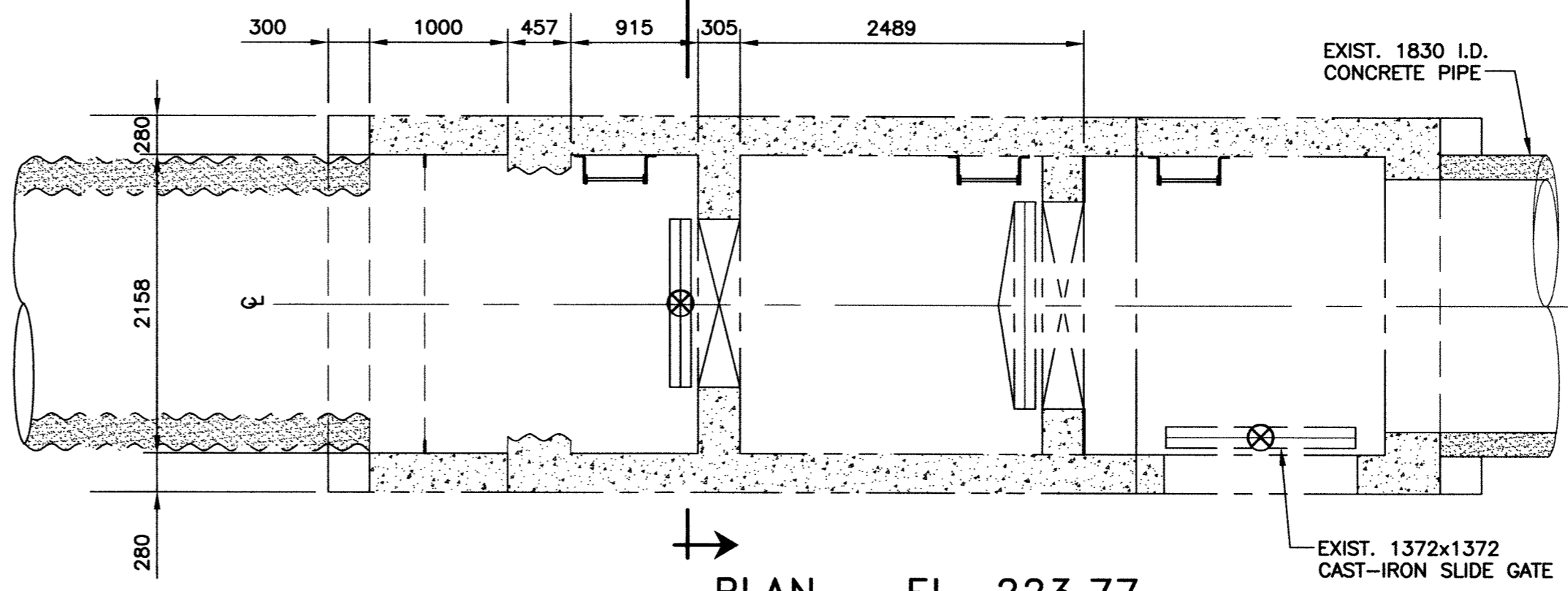
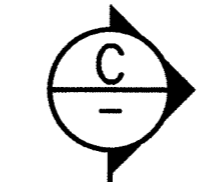
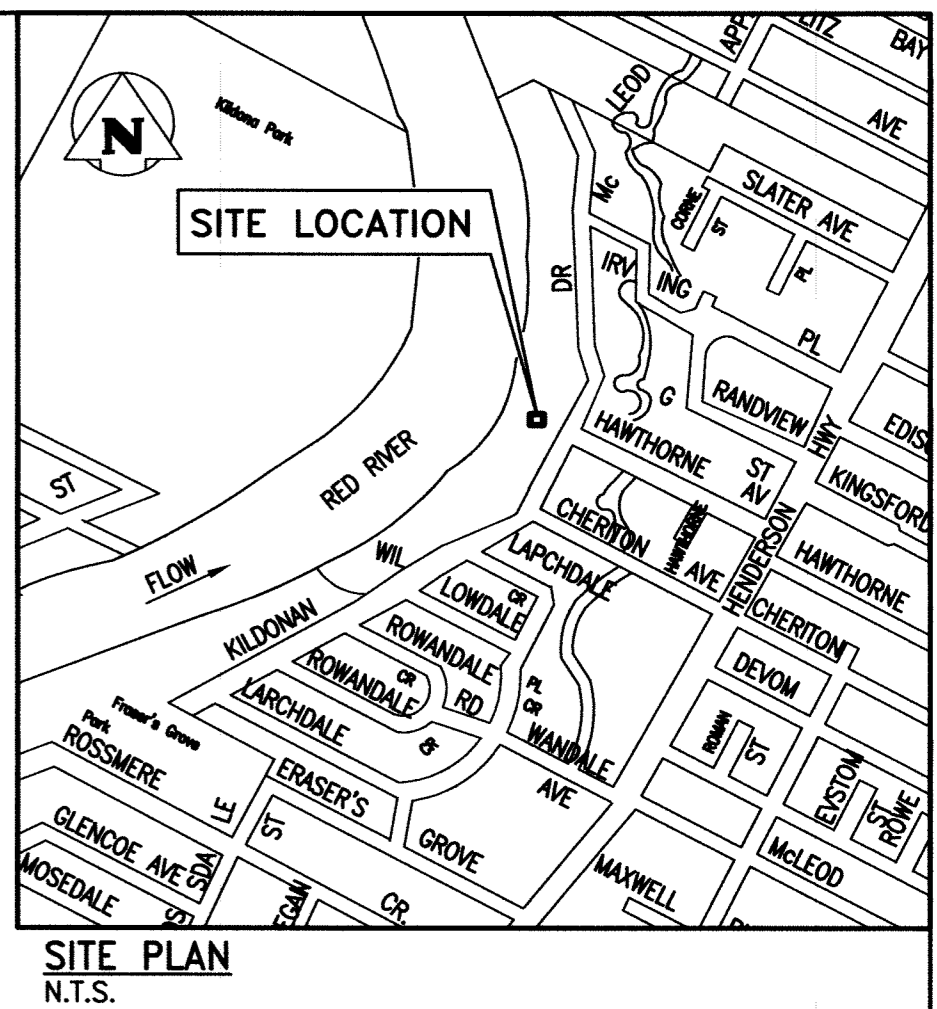


**PLAN - EL. 229.85**  
SCALE: 1:40

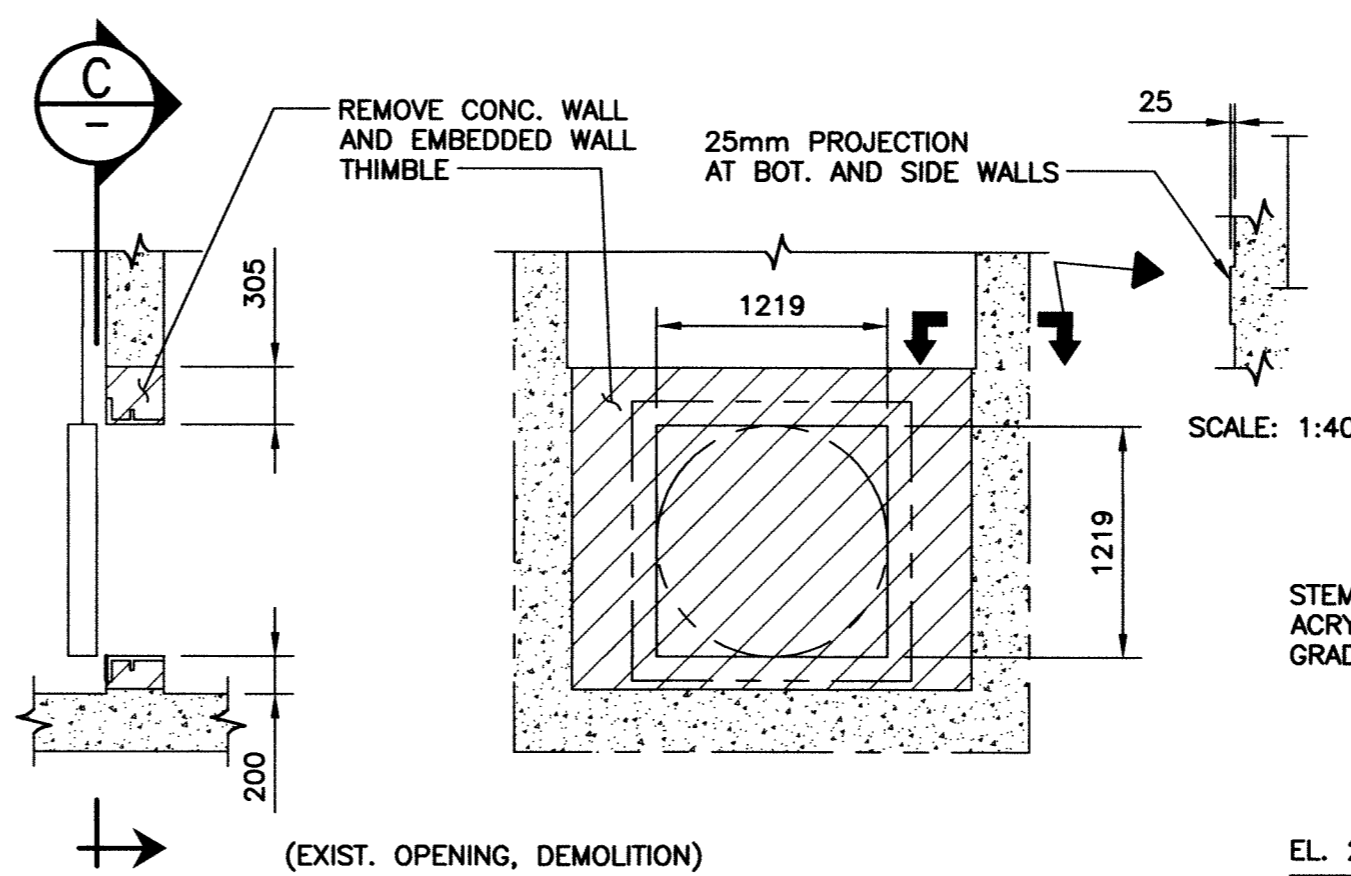


**PLAN - EL. 223.77**  
SCALE: 1:40

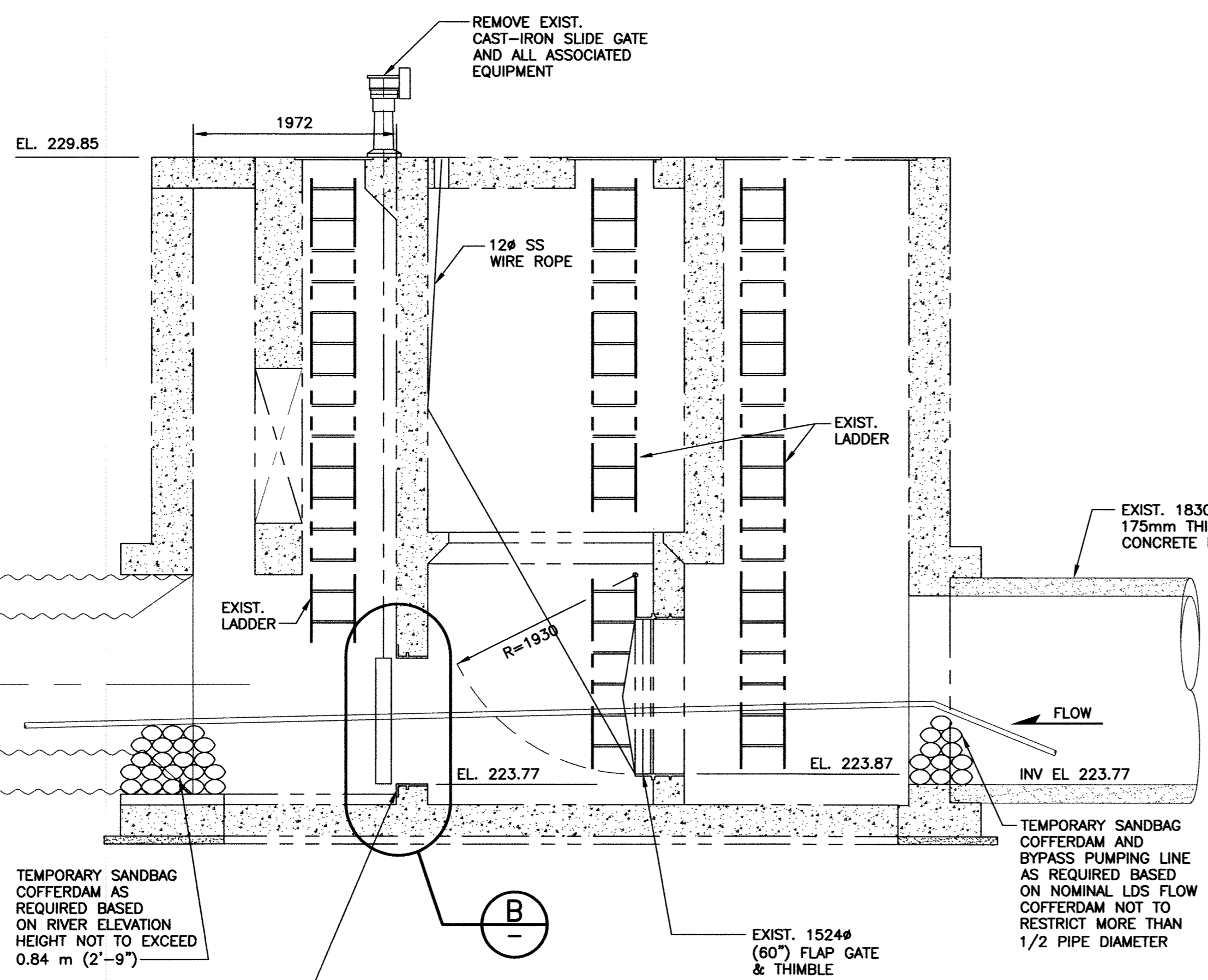


**SITE PLAN**  
N.T.S.

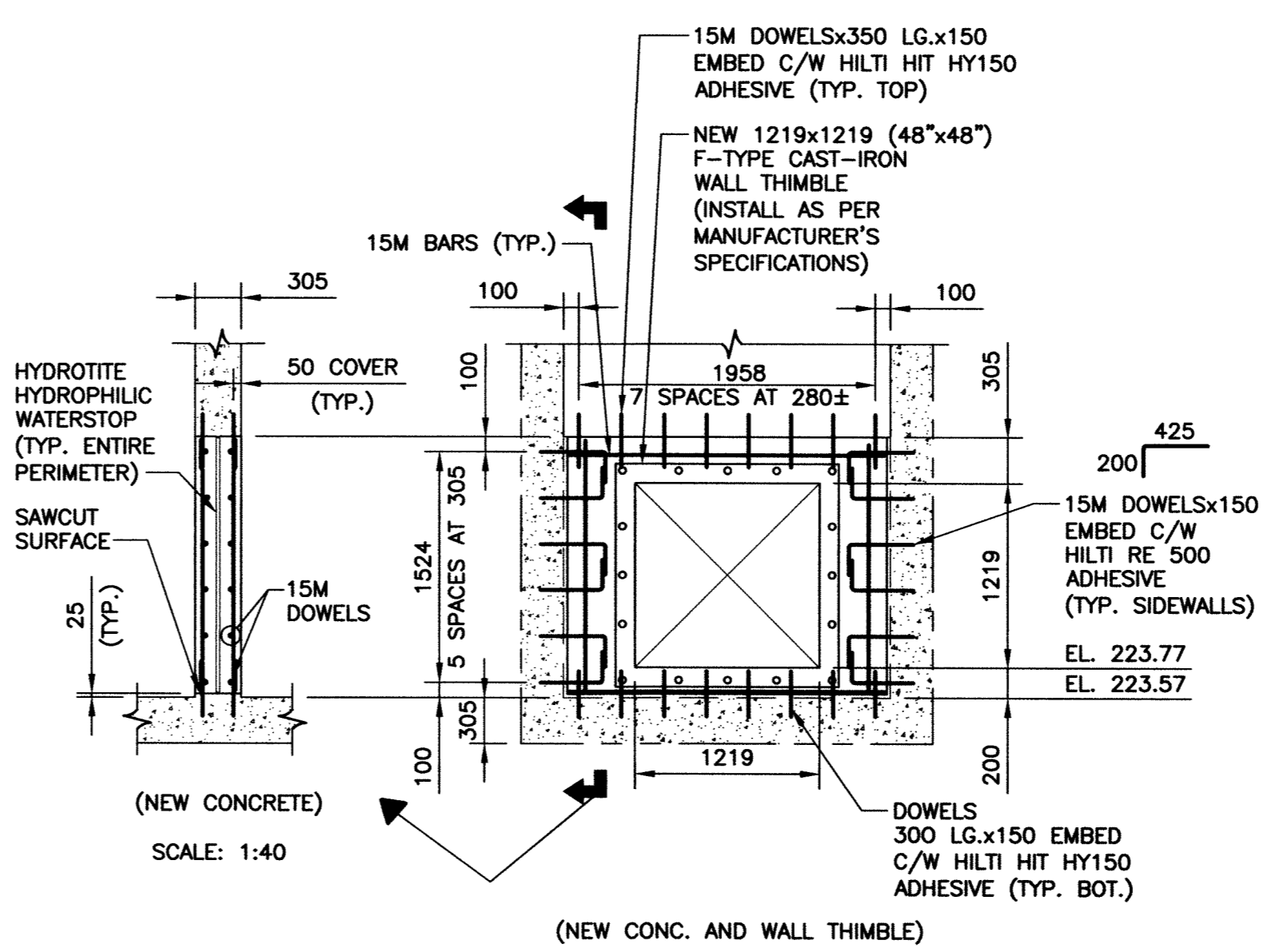
- 1.0 CONCRETE NOTES:**
- 1.1 CONCRETE MATERIALS AND WORKMANSHIP SHALL BE IN ACCORDANCE WITH CAN/CSA-A23.1-09. SEE BELOW FOR MIX REQUIREMENTS.
  - 1.2 MIX WATER SHALL BE POTABLE. CALCIUM CHLORIDE SHALL NOT BE USED. REINFORCING STEEL SHALL MEET THE REQUIREMENTS OF CSA G30.18-M92 (R2007). GRADE, 300 MPa FOR 10M BARS, 400 MPa FOR 15M AND LARGER. MINIMUM COVER SHALL BE 50mm UNLESS NOTED OTHERWISE.
  - 1.3 PROVIDE ADEQUATE PROTECTION FOR CONCRETE DURING CURING PERIOD AS PER CAN/CSA A23.1-04, SECTION 7.4. CONCRETE MIX DESIGN SHALL BE PROPORTIONED AS FOLLOWS:  
 28 DAY COMP. STRENGTH.....35 MPa  
 CEMENT (TO CSA/CAN3-A5-M88).....TYPE HS  
 EXPOSURE CLASS.....S-2  
 AGGREGATE SIZE (MAX.).....20mm  
 ENTRAINED AIR.....5%-8%  
 SLUMP (MAX.).....75mm (±25mm)
  - 1.4 HORIZONTAL SURFACES SHALL BE FINISHED IN ACCORDANCE WITH CAN/CSA A23.1-04, SECTION 7.4.
  - 1.5 WATERSTOP SHALL BE HYDROTITE SHAPE #CJ-0725-3K OR APPROVED EQUIVALENT. WATERSTOPS SHALL BE PLACED AT MID-DEPTH.
  - 1.6 CONCRETE FINISHING AS PER CAN/CSA A23.1-04, SECTION 7.5
  - 1.7 FORM RELEASE AGENT SHALL BE BIODEGRADABLE, NON-STAINING AND NON-VOLATILE.



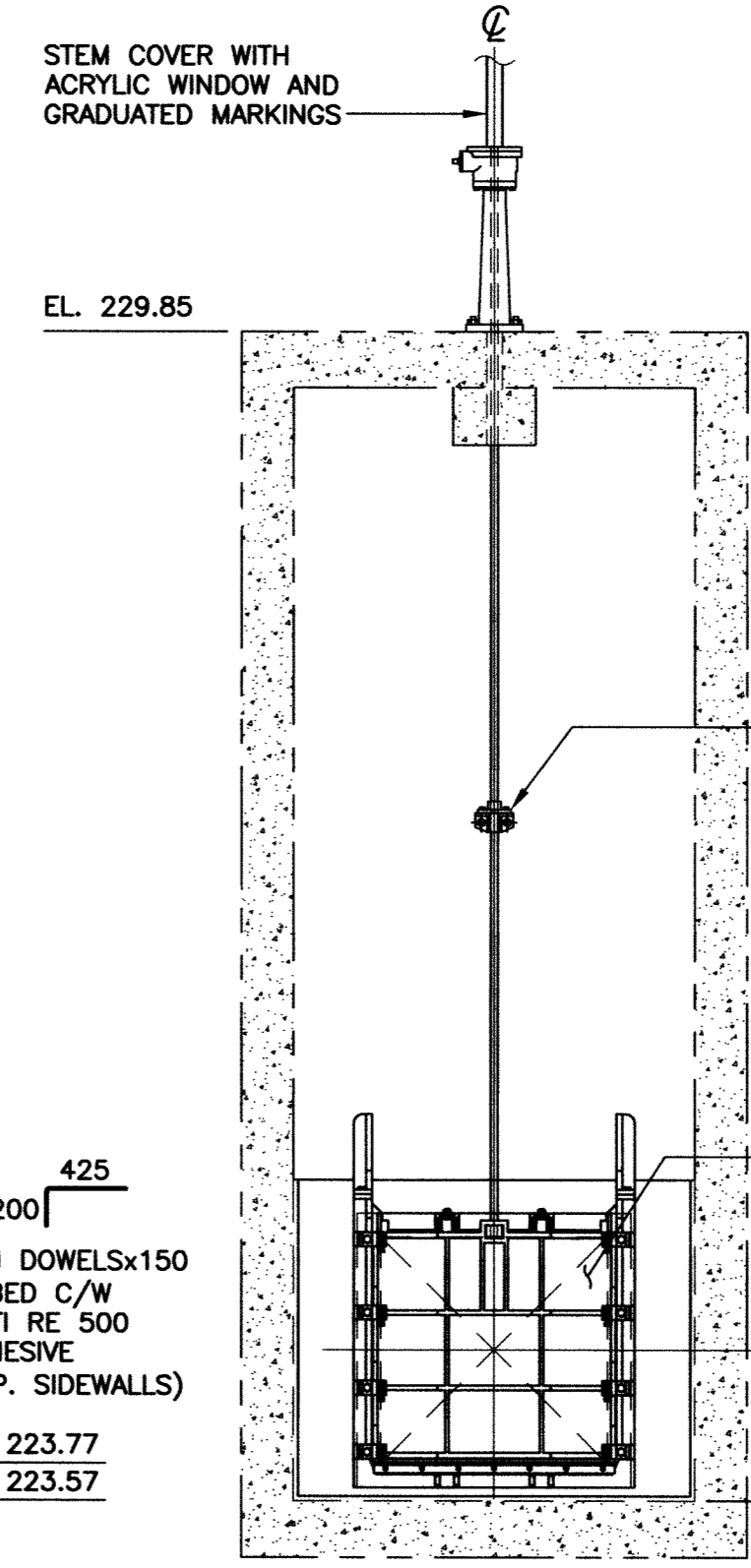
**(B) PARTIAL SECTION** SCALE: 1:40  
**(C1) SECTION** SCALE: 1:40



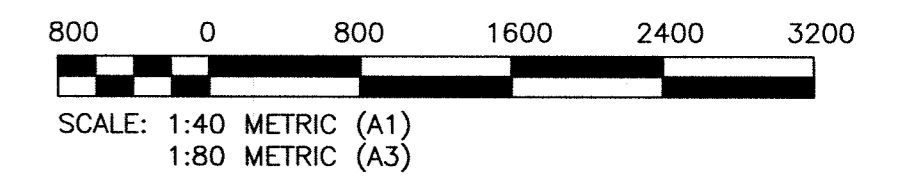
**(A) SECTION** SCALE: 1:40



**(C2) SECTION** SCALE: 1:40



**(C3) SECTION** SCALE: 1:40



**METRIC**  
WHOLE NUMBERS INDICATE MILLIMETRES  
DECIMALIZED NUMBERS INDICATE METRES

File Name: \\k-file-2\p-data\Projects\2010\10-0107-19\Doc\Control\Released\DWG\1-0145F-S0001-001.dwg - Tab: S3 Plotted By: DDerocche 08/24/2011 [Wed 1:23pm]



B.M. ELEV.	N/A	FIELD BOOK #	
POSTED TO	LBS		
DESIGNED BY	KRD	CHECKED BY	CMS
DRAWN BY	FBV	APPROVED BY	
HOR. SCALE		RELEASED FOR CONSTRUCTION	
VERTICAL			
ISSUED FOR CONSTRUCTION	2011-04-23	DATE	2011-04-27
ND. REVISIONS		DATE	

**KGS GROUP**  
CONSULTING ENGINEERS

DESIGNED BY: KRD  
CHECKED BY: CMS  
DRAWN BY: FBV  
APPROVED BY: [Signature]  
H.R. SCALE: [Blank]  
VERTICAL: [Blank]  
ISSUED FOR CONSTRUCTION: 2011-04-23  
DATE: 2011-04-27

ENGINEER'S SEAL  
C.M. SIEPMAN  
Member 20813  
2011-08-23

TENDER No. [Blank]  
FILENAME: 1-0145F-S0001-001.dwg  
PLOT DATE: 2011/08/24

**THE CITY OF WINNIPEG**  
WATER AND WASTE DEPARTMENT

HAWTHORNE FLOOD PUMPING STATION  
SLIDE GATE REFURBISHMENT  
**STRUCTURAL**  
PLAN, SECTIONS & DETAILS

SHEET 1 OF 1  
CITY DRAWING NUMBER  
1-0145F-S0001-001