

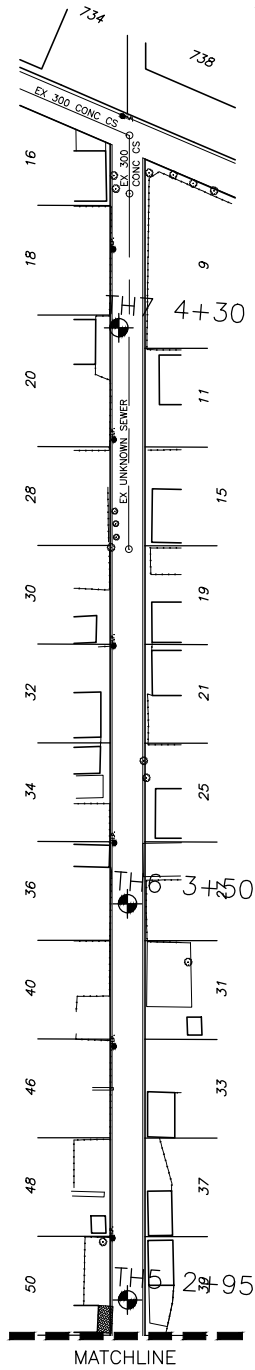
APPENDIX 'A'

GEOTECHNICAL REPORT



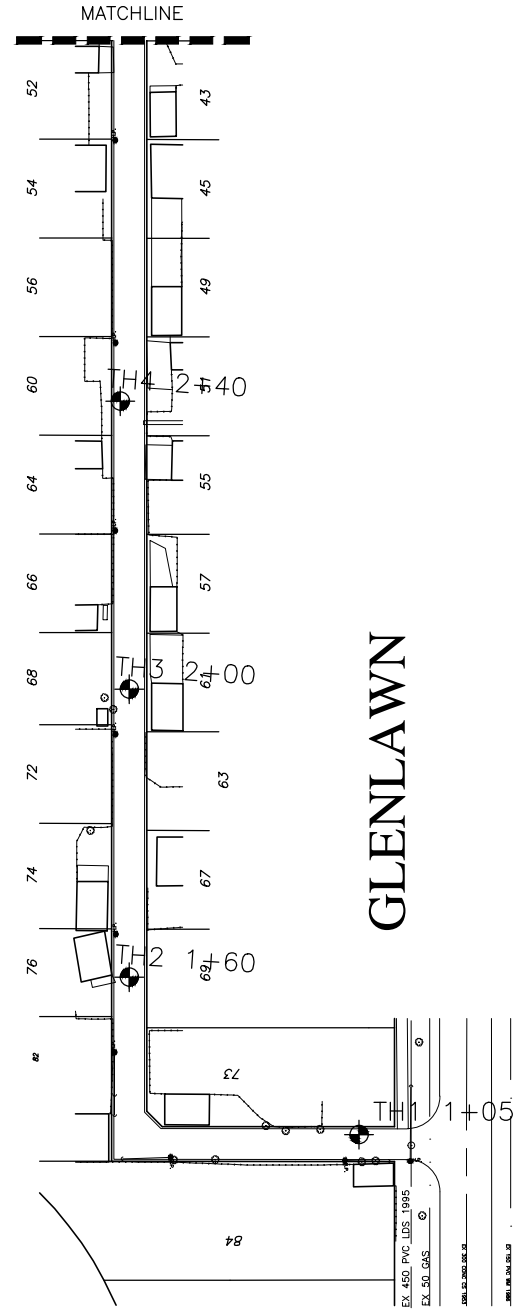
ST. MARY'S

SUNSET



GLENLAWN

SUNSET



GLENLAWN



GENIVAR

10 PRAIRIE WAY
WINNIPEG, MB R2J 3J8
Tel: (204)477-6650
Fax: (204)474-2864

CITY OF WINNIPEG
2011 LOCAL IMPROVEMENTS

TESTHOLE LOCATIONS
SUNSET ALLEY

DATE: (YY/MM/DD)	11/08/17
APPROVED:	SSU
DRAWN BY:	MBS
PROJ. NO. 111-21260-00	DWG. NO. GEO-1



Project No: WE-111-21260-00-WE

TH1

Project: 2011 Street Renewal

Client: City of Winnipeg

Enclosure:

Location: Sunset Alley(St.Mary-Glenlawn)

Engineer: SSU

SUBSURFACE PROFILE

Depth	Symbol	Description	Elevation, m	Gravel (%)	Sand (%)	Silt (%)	Clay (%)	Water Content %										
								10	20	30	40	50	60	70	80	90		
0		Ground Surface	231.8															
0		FILL 100mm thick, 20mm down granular fill; 200mm thick of clay fill mixed with granular below 0.3m	231.5															
1		CLAY stiff, grey-black, fissured	231															
3		SILT dry, tan-brown, clayey, firm	230.6															
4		CLAY stiff, brown, fissured																
7																		
10		End of Testhole	228.8															

Drill Method: Truck- Mounted

Genivar
10 Prairie Way
Winnipeg, Mb.
R2J 3J8

Datum: 231.81m

Drill Date: 08/19/11

Checked by: SSU

Hole Size: 125mm

Sheet: 1 of 1



GENIVAR

Project No: WE-111-21260-00-WE

TH2

Project: 2011 Street Renewal

Client: City of Winnipeg

Enclosure:

Location: Sunset Alley(St.Mary-Glenlawn)

Engineer: SSU

SUBSURFACE PROFILE

Depth ft m	Symbol	Description	Elevation, m	Gravel (%)	Sand (%)	Silt (%)	Clay (%)	Water Content %										
								10	20	30	40	50	60	70	80	90		
0		Ground Surface	231.9															
0		FILL 200mm thick, 20mm down granular fill; 250mm thick of clay fill mixed with granular below 0.45m	231.4															
1		CLAY stiff, grey-black, fissured; brown at 1.1m; SILTY at 1.7m																
2																		
3																		
4																		
5																		
6																		
7			229.7															
8		SILT soft, tan-brown, clayey, moist to wet	229.3															
9		CLAY stiff, brown, fissured;SILTY at 2.7m																
10		End of Testhole	228.8															
11																		

Drill Method: Truck- Mounted

Genivar
10 Prairie Way
Winnipeg, Mb.
R2J 3J8

Datum: 231.85m

Drill Date: 08/19/11

Checked by: SSU

Hole Size: 125mm

Sheet: 1 of 1



GENIVAR

Project No: WE-111-21260-00-WE

TH3

Project: 2011 Street Renewal

Client: City of Winnipeg

Enclosure:

Location: Sunset Alley(St.Mary-Glenlawn)

Engineer: SSU

SUBSURFACE PROFILE

Depth	Symbol	Description	Elevation, m	Gravel (%)	Sand (%)	Silt (%)	Clay (%)	Water Content %										
								10	20	30	40	50	60	70	80	90		
0		Ground Surface	231.8															
0 to 2		FILL 150mm thick, 20mm down granular fill; 450mm thick of clay fill mixed with granular below 0.6m	231.2															
2 to 3		CLAY stiff, brown, fissured	230.7															
3 to 8		SILT dry, firm, tan-brown, clayey; moist to wet at 1.5m, soft	229.3															
8 to 10		CLAY stiff, brown, fissured	228.7															
10		End of Testhole																

Drill Method: Truck- Mounted

Genivar
10 Prairie Way
Winnipeg, Mb.
R2J 3J8

Datum: 231.78m

Drill Date: 08/19/11

Checked by: SSU

Hole Size: 125mm

Sheet: 1 of 1



Project No: WE-111-21260-00-WE

TH4

Project: 2011 Street Renewal

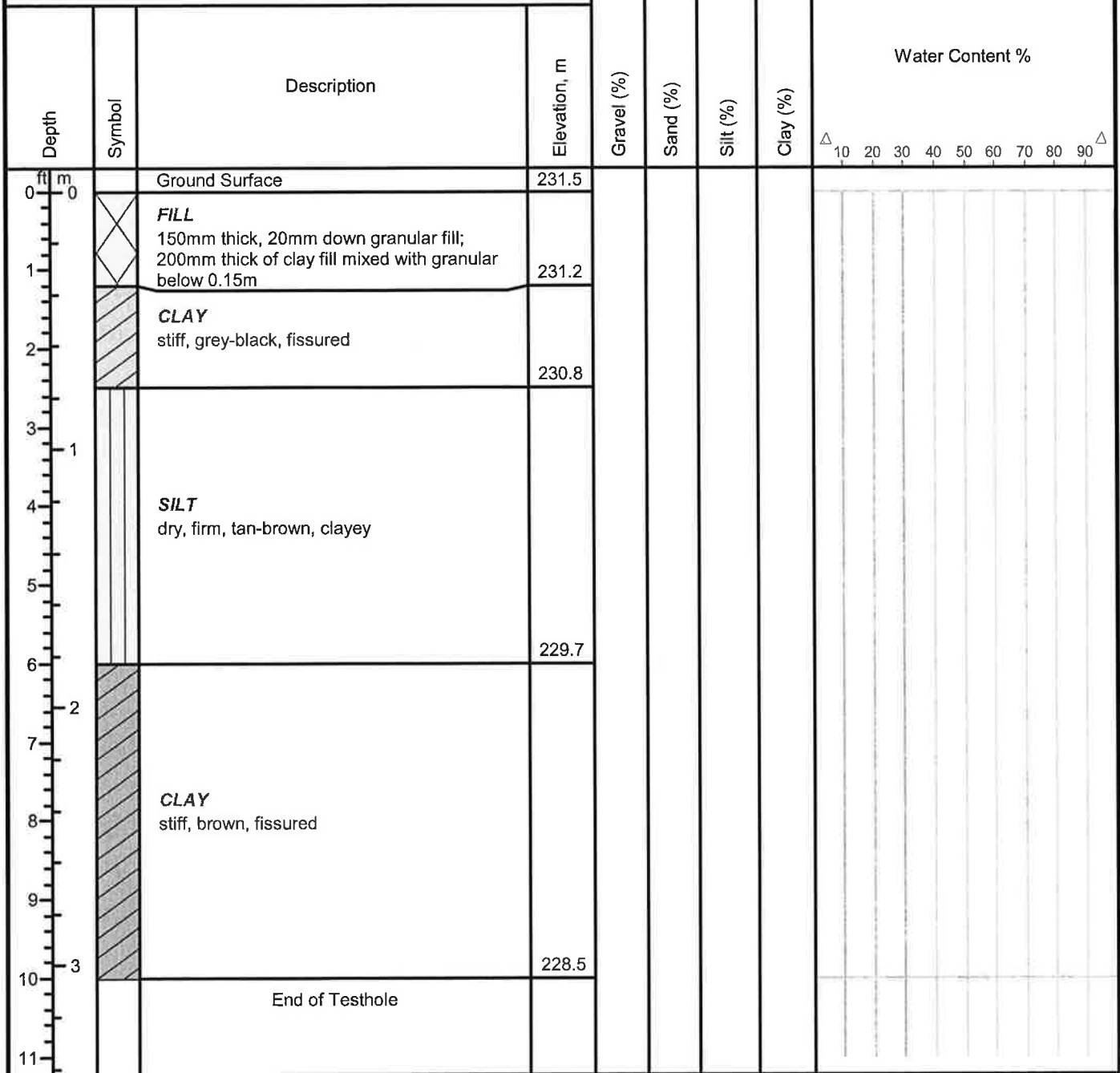
Client: City of Winnipeg

Enclosure:

Location: Sunset Alley(St.Mary-Glenlawn)

Engineer: SSU

SUBSURFACE PROFILE



Drill Method: Truck- Mounted

Genivar
10 Prairie Way
Winnipeg, Mb.
R2J 3J8

Datum: 231.53m

Drill Date: 08/19/11

Checked by: SSU

Hole Size: 125mm

Sheet: 1 of 1



GENIVAR

Project No: WE-111-21260-00-WE

TH5

Project: 2011 Street Renewal

Client: City of Winnipeg

Enclosure:

Location: Sunset Alley(St.Mary-Glenlawn)

Engineer: SSU

SUBSURFACE PROFILE

Depth	Symbol	Description	Elevation, m	Gravel (%)	Sand (%)	Silt (%)	Clay (%)	Water Content %										
								10	20	30	40	50	60	70	80	90		
0		Ground Surface	231.6															
0		FILL 300mm thick, 20mm down granular fill; 150mm thick of clay fill mixed with granular below 0.3m	231.1															
1		CLAY stiff, grey-black, fissured; brown at 1m	230															
2		SILT dry, stiff to firm, tan-brown; clayey below 1.8m	228.8															
3		CLAY stiff, brown, fissured	228.5															
10		End of Testhole																

Drill Method: Truck- Mounted

Genivar
10 Prairie Way
Winnipeg, Mb.
R2J 3J8

Datum: 231.55m

Drill Date: 08/19/11

Checked by: SSU

Hole Size: 125mm

Sheet: 1 of 1



Project No: WE-111-21260-00-WE

TH6

Project: 2011 Street Renewal

Client: City of Winnipeg

Enclosure:

Location: Sunset Alley(St.Mary-Glenlawn)

Engineer: SSU

SUBSURFACE PROFILE

Depth	Symbol	Description	Elevation, m	Gravel (%)	Sand (%)	Silt (%)	Clay (%)	Water Content %									
								10	20	30	40	50	60	70	80	90	
0		Ground Surface	231.8														
0.3		FILL 300mm thick, 20mm down granular fill; 150mm thick of clay fill mixed with granular below 0.3m	231.4														
2.1		CLAY stiff, grey-black, fissured; SILTY at 0.8m, tan-brown	231.1														
5.2		SILT dry, stiff to firm, tan-brown	230.2														
6.5		CLAY stiff, brown, fissured															
10.3		End of Testhole	228.8														

Drill Method: Truck- Mounted

Genivar
10 Prairie Way
Winnipeg, Mb.
R2J 3J8

Datum: 231.84m

Drill Date: 08/19/11

Checked by: SSU

Hole Size: 125mm

Sheet: 1 of 1



GENIVAR

Project No: WE-111-21260-00-WE

TH7

Project: 2011 Street Renewal

Client: City of Winnipeg

Enclosure:

Location: Sunset Alley(St.Mary-Glenlawn)

Engineer: SSU

SUBSURFACE PROFILE

Depth	Symbol	Description	Elevation, m	Gravel (%)	Sand (%)	Silt (%)	Clay (%)	Water Content %										
								10	20	30	40	50	60	70	80	90		
0		Ground Surface	231.8															
1		FILL 300mm thick, 20mm down granular fill; 450mm thick of clay fill mixed with granular below 0.3m																
2			231															
3		CLAY stiff, grey-black, fissured; brown below 0.8m; SILTY at 1.5m to 1.7m, tan-brown; brown below 1.7m																
4																		
5																		
6																		
7																		
8																		
9																		
10		End of Testhole	228.8															
11																		

Drill Method: Truck- Mounted

Genivar
10 Prairie Way
Winnipeg, Mb.
R2J 3J8

Datum: 231.80m

Drill Date: 08/19/11

Checked by: SSU

Hole Size: 125mm

Sheet: 1 of 1