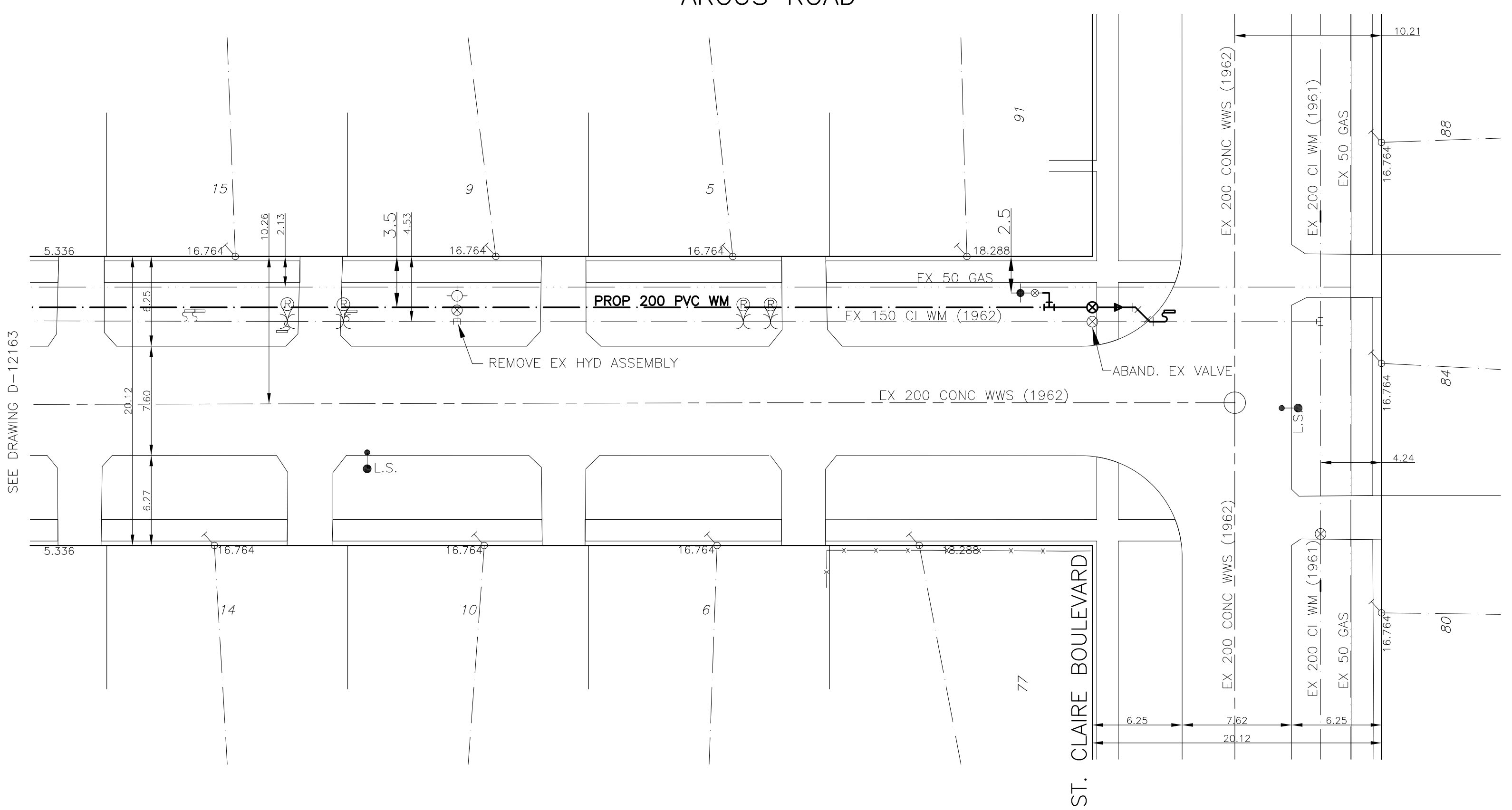


HOUSE WATER SERVICE INFORMATION				
ADDRESS & NATURE OF SERVICE	SIZE (mm) & TYPE	SHORT & LONG MEASUREMENT	CORP LOCATION	REMARKS
77 St. Claire Residential	19 Copper	10.6 N S PL		
91 St. Claire Residential	19 Copper	9.7 N S FL		
5 Argus Rd Residential	19 Copper	3.7 NS LINE HOUSE 7.6 OUT		
6 Argus Rd Residential	19 Copper	4.7 NS HOUSE LINE 8.5 FR HOUSE FRONT		SC 0.152 IN SIDEWALK
9 Argus Rd Residential	19 Copper	3.2 NS HOUSE LINE 9.1 FR HOUSE FRONT		
10 Argus Rd Residential	19 Copper	4.1 NS HOUSE LINE 10.1 FR HOUSE FRONT		
14 Argus Rd Residential	19 Copper	4.7 NS HOUSE LINE 8.4 FR HOUSE FRONT		
15 Argus Rd Residential	19 Copper	4.5 NSL HOUSE 8.5 FR HOUSE FRONT DOOR		

CHAINAGE ALONG EAST PROPERTY LINE OF ARGUS ROAD



- NOTES:**
- ALL GATE VALVES ARE COUNTER-CLOCKWISE TO OPEN WITH A BLACK OPERATING NUT.
  - WATERMAIN TO BE INSTALLED BY TRENCHLESS METHODS.
  - BACKFILL IS CLASS 5 WITHIN BOULEVARD AND CLASS 3 WHEN WITHIN 1.0m OF PAVEMENT OR SIDEWALK.
  - WATER SERVICES ARE 19mm UNLESS OTHERWISE NOTED.
  - MINIMUM COVER TO TOP OF WATERMAIN SHALL BE 2.4m.
  - LOCATION OF ALL SERVICES TO BE CONFIRMED IN FIELD.
  - EXPOSE EXISTING WATERMAIN TO CONFIRM DEPTH PRIOR TO CONSTRUCTION.
  - ALL LEAD SERVICES TO BE RENEWED TO PROPERTY LINE.
  - SERVICES TO BE RENEWED SHALL BE REPLACED FROM WATERMAIN TO PROPERTY LINE. ALL OTHERS TO BE RECONNECTED.

EXISTING	LEGEND - PLAN	PROPOSED	EXISTING	LEGEND - PLAN	PROPOSED	EXISTING	LEGEND - PROFILE	PROPOSED
	WATERMAIN			REDUCER			150mm W.M.	
	HYDRANT VALVE			TRAFFIC SIGNAL			LAND DRAINAGE SEWER	
	LAND DRAINAGE SEWER			HYDRO			WASTE WATER SEWER	
	WASTE WATER SEWER			MANHOLE			JUNCTIONS	
	CATCH BASIN			M.T.S.			CULVERT	
	CURB STOP			C.B. LEAD				
	TEE			SURVEY BAR				
	BEND			H.P.				
	ANODE			LAMP STANDARD				

LOCATION APPROVED

SUPV. U/G STRUCTURES DATE COMMITTEE

NOTE:  
LOCATION OF UNDERGROUND STRUCTURES AS SHOWN ARE BASED ON THE BEST INFORMATION AVAILABLE BUT NO GUARANTEE IS GIVEN THAT ALL EXISTING UTILITIES ARE SHOWN OR THAT THE GIVEN LOCATIONS ARE EXACT. CONFIRMATION OF EXISTENCE AND EXACT LOCATION OF ALL SERVICES MUST BE OBTAINED FROM THE INDIVIDUAL UTILITIES BEFORE PROCEEDING WITH CONSTRUCTION.

NO.	REVISIONS	DATE	BY

**GENIVAR**  
10 PRADRE WAY WINNIPEG, MANITOBA R2J 3J8  
PH: (204)-477-6650 FAX: (204)-474-2864

DESIGNED BY LV/PR CHECKED BY SM  
DRAWN BY LV APPROVED BY IMCK  
HOR. SCALE: 1:250  
VERT. SCALE: 1:50  
RELEASED FOR CONSTRUCTION SIGNED BY K. ZUREK P. ENG.  
DATE MARCH 7, 2011

ENGINEERS SEAL  
**I. G. MCKINNON**  
REGISTERED PROFESSIONAL ENGINEER  
CONSULTANT DRAWING NO. 010-050-02

**THE CITY OF WINNIPEG**  
WATER AND WASTE DEPARTMENT

2011 CAPITAL WORKS  
WATERMAIN RENEWALS  
ARGUS ROAD  
80M SOUTH OF McMEANS AVENUE EAST TO  
ST. CLAIRE BOULEVARD

SHEET 2 OF 2  
CITY DRAWING NO. D-12164-R1



METRIC  
WHOLE NUMBERS INDICATE MILLIMETRES  
DECIMALIZED NUMBERS INDICATE METRES