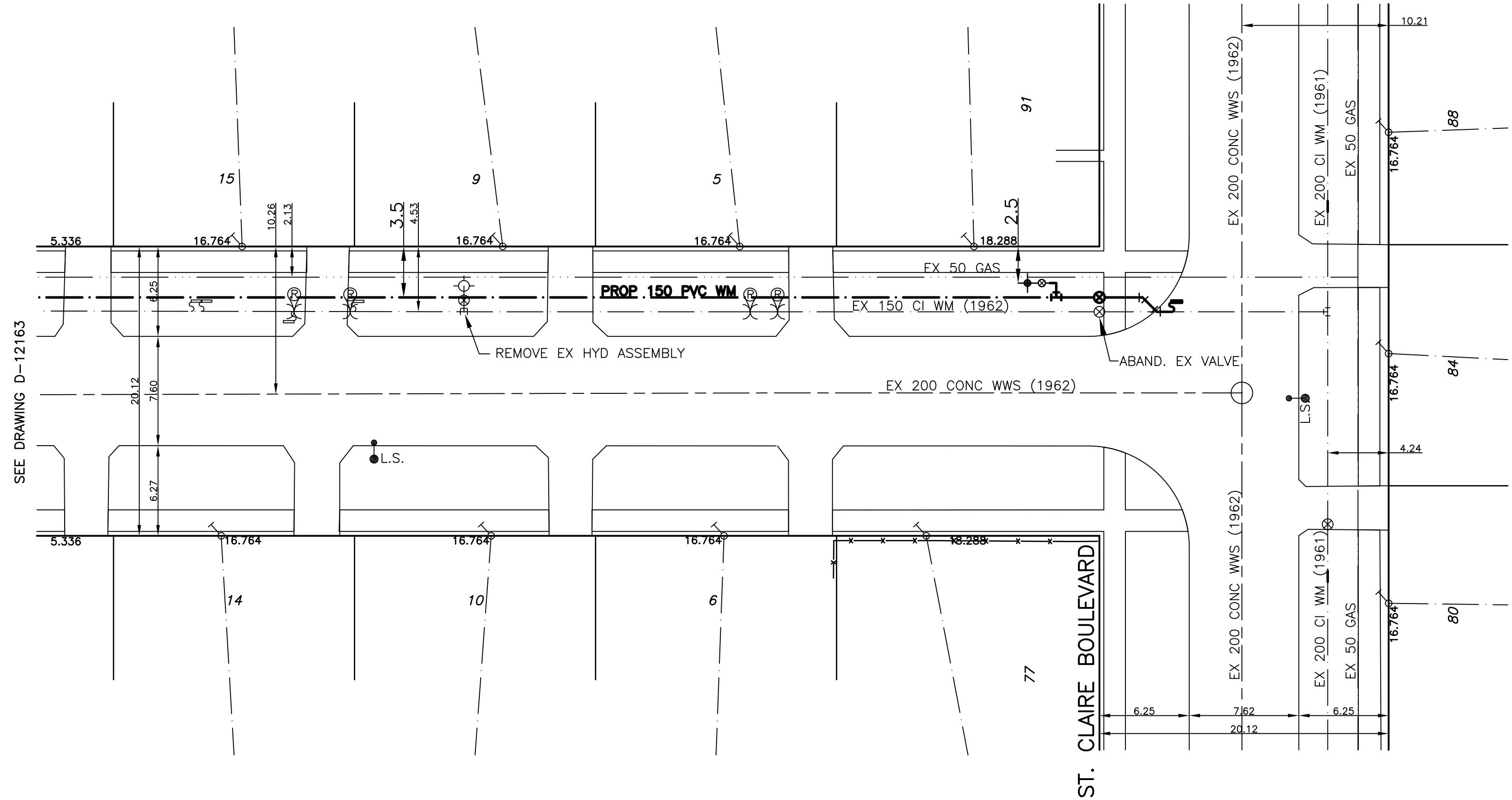
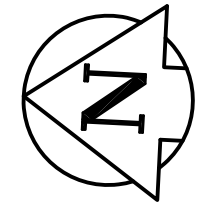


HOUSE WATER SERVICE INFORMATION					
ADDRESS & NATURE OF SERVICE	SIZE (mm) & TYPE	SHORT & LONG MEASUREMENT	CORP LOCATION	REMARKS	
77 St. Claire Residential	19 Copper	10.6 N S PL			
91 St. Claire Residential	19 Copper	9.7 N S PL			
5 Argus Rd Residential	19 Copper	3.7 NS LINE HOUSE 7.8 OUT			
6 Argus Rd Residential	19 Copper	4.7 NS HOUSE LINE 8.5 FR HOUSE FRONT		SIC 0.152 IN SIDEWALK	
9 Argus Rd Residential	19 Copper	3.2 NS HOUSE LINE 8.1 FR HOUSE FRONT			
10 Argus Rd Residential	19 Copper	4.1 NS HOUSE LINE 10.1 FR HOUSE FRONT			
14 Argus Rd Residential	19 Copper	4.7 FR HOUSE LINE 9.4 FR HOUSE FRONT			
15 Argus Rd Residential	19 Copper	4.5 NSL HOUSE 8.5 FR HOUSE FRONT DOOR			

CHAINAGE ALONG EAST PROPERTY LINE OF ARGUS ROAD
ARGUS ROAD



- NOTES:**
1. ALL GATE VALVES ARE COUNTER-CLOCKWISE TO OPEN WITH A BLACK OPERATING NUT.
 2. WATERMAIN TO BE INSTALLED BY TRENCHLESS METHODS.
 3. BACKFILL IS CLASS 5 WITHIN BOULEVARD AND CLASS 3 WHEN WITHIN 1.0m OF PAVEMENT OR SIDEWALK.
 4. WATER SERVICES ARE 19mm UNLESS OTHERWISE NOTED.
 5. MINIMUM COVER TO TOP OF WATERMAIN SHALL BE 2.4m.
 6. LOCATION OF ALL SERVICES TO BE CONFIRMED IN FIELD.
 7. EXPOSE EXISTING WATERMAIN TO CONFIRM DEPTH PRIOR TO CONSTRUCTION.
 8. ALL LEAD SERVICES TO BE RENEWED TO PROPERTY LINE.
 9. SERVICES TO BE RENEWED SHALL BE REPLACED FROM WATERMAIN TO PROPERTY LINE. ALL OTHERS TO BE RECONNECTED.



METRIC
WHOLE NUMBERS INDICATE MILLIMETRES
DECIMALIZED NUMBERS INDICATE METRES



—	WATERMAIN	—	REDUCER	—	150mm W.W.	—	WATERMAIN	—	150mm W.W.
—	HYDRANT	—	PLUG	—	300mm L.D.S.	—	VALVE	—	300mm L.D.S.
—	VALVE	—	TRAFFIC SIGNAL	—	250mm W.W.S.	—	LAND DRAINAGE SEWER	—	300mm L.D.S.
—	LAND DRAINAGE SEWER	—	GAS	—	—	—	WASTE WATER SEWER	—	750mm W.W.S.
—	WASTE WATER SEWER	—	HYDRO	—	—	—	JUNCTIONS	—	—
—	MANHOLE	—	M.T.S.	—	—	—	CULVERT	—	—
—	CATCH BASIN	—	C.B. LEAD	—	—	—	—	—	—
—	CURB STOP	—	SURVEY BAR	—	—	—	—	—	—
—	TEE	—	TREE	—	—	—	—	—	—
—	BEND	—	H.P.P.	—	—	—	—	—	—
—	ANODE	—	L.S.	—	—	—	—	—	—
EXISTING	LEGEND - PLAN	PROPOSED	EXISTING	LEGEND - PLAN	PROPOSED	EXISTING	LEGEND - PROFILE	PROPOSED	EXISTING

LOCATION APPROVED

SUPV. U/G STRUCTURES COMMITTEE

NOTE:
LOCATION OF UNDERGROUND STRUCTURES AS SHOWN ARE BASED ON THE BEST INFORMATION AVAILABLE BUT NO GUARANTEE IS GIVEN THAT ALL EXISTING UTILITIES ARE SHOWN OR THAT THE GIVEN LOCATIONS ARE EXACT. CONFIRMATION OF EXISTENCE AND EXACT LOCATION OF ALL SERVICES MUST BE OBTAINED FROM THE INDIVIDUAL UTILITIES BEFORE PROCEEDING WITH CONSTRUCTION.

B.M. ELEV.	CWB# 10-032	233.717
NO.	REVISIONS	DATE BY

GENIVAR
10 PRADIER WAY WINNIPEG, MANITOBA R2L 3J8
TEL: (204)-477-8850 FAX: (204)-474-2864

DESIGNED BY: LV/PR
CHECKED BY: SM
DRAWN BY: LV
APPROVED BY: IMcK
HOR. SCALE: 1:250
VERT. SCALE: 1:50
DATE: JULY 2010

ENGINEERS SEAL
PROVINCE OF MANITOBA
REGISTERED PROFESSIONAL ENGINEER
I. G. MCKINNON
CONSULTANT DRAWING NO. 010-050-02

Winnipeg
THE CITY OF WINNIPEG
WATER AND WASTE DEPARTMENT

2010 CAPITAL WORKS
WATERMAIN RENEWALS
ARGUS ROAD
80M SOUTH OF McMEANS AVENUE EAST TO
ST. CLAIRE BOULEVARD