

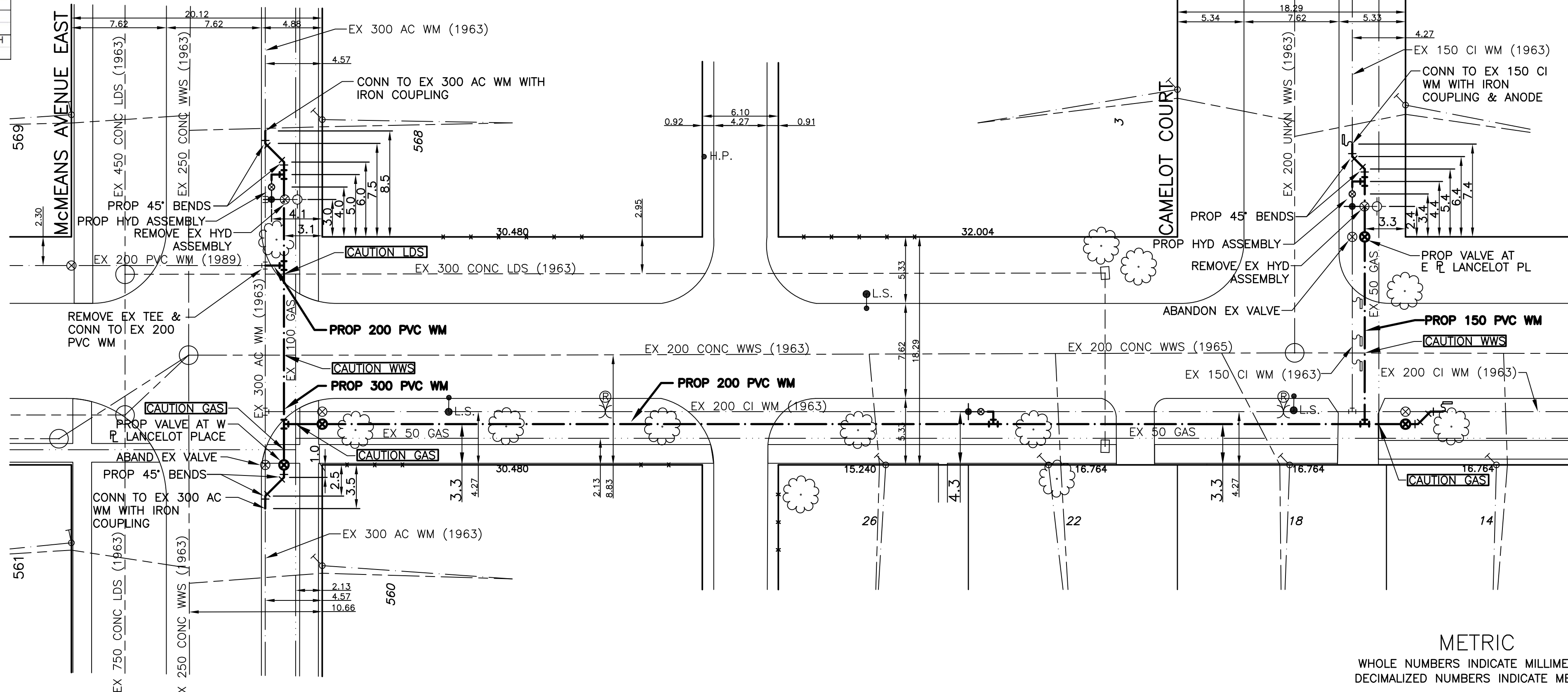
HOUSE WATER SERVICE INFORMATION					
ADDRESS & NATURE OF SERVICE	SIZE (mm) & TYPE	SHORT & LONG MEASUREMENT	CORP LOCATION	REMARKS	
14 Lancelot Pl. Residential	19 Copper	2.6 NSL OF HOUSE 5.1 FROM HSE FRONT		SEE SKETCH SWR JCT - 16.8 S FROM 1ST MH OFF MCMEANS & LANCELOT	
18 Lancelot Pl. Residential	19 Copper	4 NSL OF HOUSE 6.6 FROM HSE FRONT		SEE SKETCH SWR JCT - 86 S FROM MH AT MCMEANS & LANCELOT	
22 Lancelot Pl. Residential	19 Copper	6.6 N. HSE LINE 6.2 FROM HSE FRONT		SEE SKETCH SWR JCT - 54.6 FROM MH AT MCMEANS & LANCELOT	
26 Lancelot Pl. Residential	19 Copper	4.6 N S H/L 6.3 FROM HSE FRONT		SEE SKETCH SWR JCT - 54.6 S FROM MH AT MCMEANS & LANCELOT	

CHAINAGE ALONG WEST PROPERTY LINE OF LANCELOT PLACE

LANCELOT PLACE

NOTES:

1. ALL GATE VALVES ARE COUNTER-CLOCKWISE TO OPEN WITH A BLACK OPERATING NUT. WATERMAIN TO BE INSTALLED BY TRENCHLESS METHODS.
2. BACKFILL IS CLASS 5 WITHIN BOULEVARD AND CLASS 3 WHEN WITHIN PAVEMENT/SIDEWALK OR WHEN WITHIN 1.0m OF PAVEMENT OR SIDEWALK.
3. WATER SERVICES ARE 19mm UNLESS OTHERWISE NOTED.
4. MINIMUM COVER TO TOP OF WATERMAIN SHALL BE 2.4m.
5. LOCATION OF ALL SERVICES TO BE CONFIRMED IN FIELD.
6. EXPOSE EXISTING WATERMAIN TO CONFIRM DEPTH PRIOR TO CONSTRUCTION.
7. ALL LEAD SERVICES TO BE RENEWED TO PROPERTY LINE.
8. SERVICES TO BE RENEWED SHALL BE REPLACED FROM WATERMAIN TO PROPERTY LINE. ALL OTHERS TO BE RECONNECTED.



METRIC
WHOLE NUMBERS INDICATE MILLIMETRES
DECIMALIZED NUMBERS INDICATE METRES

EXISTING	LEGEND - PLAN	PROPOSED	EXISTING	LEGEND - PLAN	PROPOSED	EXISTING	LEGEND - PROFILE	PROPOSED	EXISTING	LEGEND - PROFILE	PROPOSED
---	WATERMAIN	---	---	REDUCER	---	---	150mm W.M.	---	---	WATERMAIN	---
+	HYDRANT VALVE	+	+	PLUG	+	+	300mm L.D.S.	---	---	WATERMAIN	---
●	VALVE	●	---	TRAFFIC SIGNAL	---	---	250mm W.W.S.	---	---	LAND DRAINAGE SEWER	---
---	LAND DRAINAGE SEWER	---	---	GAS	---	---	150mm W.M.	---	---	WASTE WATER SEWER	---
---	WASTE WATER SEWER	---	---	HYDRO	---	---	300mm L.D.S.	---	---	JUNCTIONS	---
○	MANHOLE	○	---	M.T.S.	---	---	250mm W.W.S.	---	---	CULVERT	---
□	CATCH BASIN	□	---	C.B. LEAD	---	---	---	---	---	---	---
○	CURB STOP	○	---	SURVEY BAR	---	---	---	---	---	---	---
+	TEE	+	---	TREE	---	---	---	---	---	---	---
+	BEND	+	---	H.P.	---	---	---	---	---	---	---
+	ANODE	+	---	HYDRO POLE	---	---	---	---	---	---	---
---	---	---	---	LAMP STANDARD	---	---	---	---	---	---	---

LOCATION APPROVED

SUPPLY U/G STRUCTURES COMMITTEE

DATE

NOTE:
LOCATION OF UNDERGROUND STRUCTURES AS SHOWN ARE BASED ON THE BEST INFORMATION AVAILABLE BUT NO QUANTITIES ARE GIVEN THAT ALL EXISTING UTILITIES ARE SHOWN OR THAT THE GIVEN LOCATIONS ARE EXACT. CONFIRMATION OF EXISTENCE AND EXACT LOCATION OF ALL SERVICES MUST BE OBTAINED FROM THE INDIVIDUAL UTILITIES BEFORE PROCEEDING WITH CONSTRUCTION.

NO.	REVISIONS	DATE	BY

GENIVAR
10 PRAIRIE WAY WINNIPEG, MANITOBA, R2L 3J8
PH: (204)-477-6650 FAX: (204)-474-2884

DESIGNED BY: LV/PR
CHECKED BY: SM
DRAWN BY: LV
APPROVED BY: IMcK
HOR. SCALE: 1:250
VERT. SCALE: 1:50
DATE: JULY 2010

ENGINEERS SEAL
I. G. MCKINNON
REGISTERED PROFESSIONAL ENGINEER
CONSULTANT DRAWING NO. 010-050-03

THE CITY OF WINNIPEG
WATER AND WASTE DEPARTMENT

2010 CAPITAL WORKS
WATERMAIN RENEWALS
LANCELOT PLACE
McMEANS AVENUE EAST TO
90M SOUTH OF MCMEANS AVENUE EAST