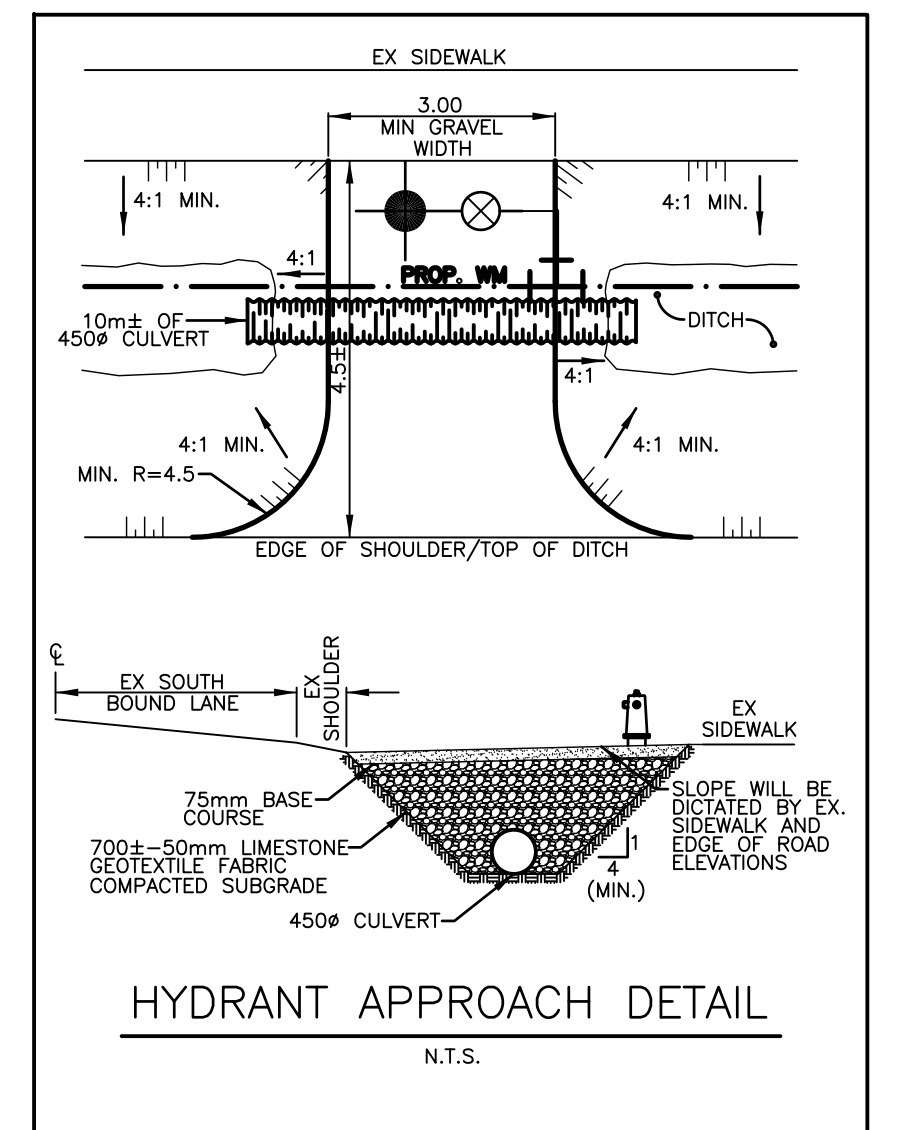
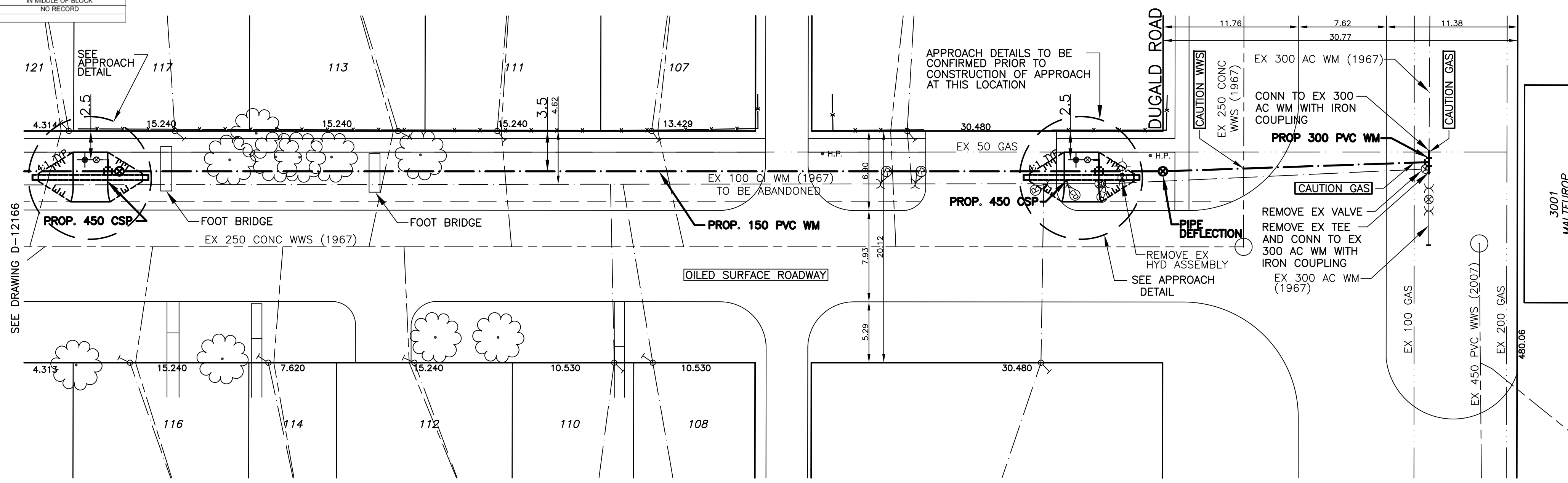


ADDRESS & NATURE OF SERVICE	SIZE (mm) & TYPE	SHORT & LONG MEASUREMENT	CORP. LOCATION	REMARKS
107 McFadden Ave Residential	19 Copper	1.5 S. S. HSE 3.8		SEE SKETCH: SEWER JCT 48.6 S FR MH AT DUGALD & MCFADDEN
108 McFadden Ave Residential	19 Copper	0.8 S/S HOUSE LINE		
110 McFadden Ave Residential	19 Copper	1.8 N.S. HSE LINE 5.9 FROM HSE FRONT		SEE SKETCH: SEWER JCT 51.8 S FR MH AT DUGALD & MCFADDEN
111 McFadden Ave Residential	19 Copper	4.3 N.S. HSE LINE 8.5 FROM HSE FRONT		SEE SKETCH: SEWER JCT 63.5 S FR MH AT DUGALD & MCFADDEN
112 McFadden Ave Residential	19 Copper	0.9 N.S. HSE LINE 6.6 FROM HSE FRONT		SEE SKETCH: SEWER JCT 72.8 S FR MH AT DUGALD & MCFADDEN
113 McFadden Ave Residential	19 Copper	1.2 S.N. HSE LINE 5.9 FROM HSE FRONT		SEE SKETCH: SEWER JCT 75.3 S FR MH AT DUGALD & MCFADDEN
114 McFadden Ave Residential	19 Copper	0.9 HSE HOUSE 7 OUT		SEE SKETCH: SEWER JCT 84 S FR MH AT DUGALD & MCFADDEN
116 McFadden Ave Residential	19 Copper	4.6 N.S. HSE LINE 7.7 FROM HSE FRONT		SEE SKETCH: SEWER JCT 20.2 N OF MH IN MIDDLE OF BLOCK
117 McFadden Ave Residential	19 Copper	5.5 S.N. HSE LINE 0.3 STREET LINE		SEE SKETCH: SEWER JCT 18.7 N OF MH IN MIDDLE OF BLOCK
121 McFadden Ave Residential	19 Copper			NO RECORD

CHAINAGE ALONG WEST PROPERTY LINE OF MCFADDEN AVENUE

- NOTES:**
- ALL GATE VALVES ARE COUNTER-CLOCKWISE TO OPEN WITH A BLACK OPERATING NUT. WATERMAIN TO BE INSTALLED BY TRENCHLESS METHODS.
  - BACKFILL IS CLASS 5 WITHIN BOULEVARD AND CLASS 3 WHEN WITHIN 1.0m OF PAVEMENT OR SIDEWALK.
  - WATER SERVICES ARE 19mm UNLESS OTHERWISE NOTED.
  - MINIMUM COVER TO TOP OF WATERMAIN SHALL BE 2.4m.
  - LOCATION OF ALL SERVICES TO BE CONFIRMED IN FIELD.
  - EXPOSE EXISTING WATERMAIN TO CONFIRM DEPTH PRIOR TO CONSTRUCTION.
  - ALL LEAD SERVICES TO BE RENEWED TO PROPERTY LINE.
  - SERVICES TO BE RENEWED SHALL BE REPLACED FROM WATERMAIN TO PROPERTY LINE. ALL OTHERS TO BE RECONNECTED.
  - CLEAN AND REGRADE EXISTING DITCH AS REQUIRED AND DIRECTED BY THE CONTRACT ADMINISTRATOR.



EXISTING	LEGEND - PLAN	PROPOSED	EXISTING	LEGEND - PLAN	PROPOSED	EXISTING	LEGEND - PROFILE	PROPOSED
---	WATERMAIN	---	---	REDUCER	---	---	150mm W.M.	---
+	HYDRANT VALVE	+	+	PLUG	+	+	300mm L.D.S.	---
---	LAND DRAINAGE SEWER	---	---	TRAFFIC SIGNAL	---	---	250mm W.M.S.	---
---	WASTE WATER SEWER	---	---	GAS	---	---	300mm L.D.S.	---
○	MANHOLE	○	---	HYDRO	---	---	250mm W.M.S.	---
□	CATCH BASIN	□	---	M.T.S.	---	---		---
+	CURB STOP	+	---	C.B. LEAD	---	---		---
+	TEE	+	---	SURVEY BAR	---	---		---
+	BEND	+	---	TREE	---	---		---
+	ANODE	+	---	H.P.P.	---	---		---
---		---	---	L.S.	---	---		---
---		---	---	HYDRO POLE	---	---		---
---		---	---	LAMP STANDARD	---	---		---

LOCATION APPROVED

SUPV. U/G STRUCTURES DATE

NOTE: LOCATION OF UNDERGROUND STRUCTURES AS SHOWN ARE BASED ON THE BEST INFORMATION AVAILABLE BUT NO GUARANTEE IS GIVEN THAT ALL EXISTING UTILITIES ARE SHOWN OR THAT THE GIVEN LOCATIONS ARE EXACT. CONFIRMATION OF EXISTENCE AND EXACT LOCATION OF ALL SERVICES MUST BE OBTAINED FROM THE INDIVIDUAL UTILITIES BEFORE PROCEEDING WITH CONSTRUCTION.

NO.	REVISIONS	DATE	BY

**GENIVAR**  
10 PRINCE WAY WINNIPEG, MANITOBA R2J 3J8  
PH: (204)-477-8650 FAX: (204)-474-2864

DESIGNED BY: LV/PR  
DRAWN BY: LV  
HOR. SCALE: 1:250  
VERT. SCALE: 1:50  
DATE: JULY 2010

CHECKED BY: SM  
APPROVED BY: IMcK  
RELEASED FOR CONSTRUCTION  
DATE:

ENGINEERS SEAL  
I. G. McKINNON  
REGISTERED PROFESSIONAL ENGINEER  
CONSULTANT DRAWING NO. 010-050-05

METRIC  
WHOLE NUMBERS INDICATE MILLIMETRES  
DECIMALIZED NUMBERS INDICATE METRES

**THE CITY OF WINNIPEG**  
WATER AND WASTE DEPARTMENT

2010 CAPITAL WORKS  
WATERMAIN RENEWALS  
MCFADDEN AVENUE  
110M NORTH OF COPELAND STREET TO  
DUGALD ROAD

SHEET 2 OF 2  
CITY DRAWING NO.  
D-12167