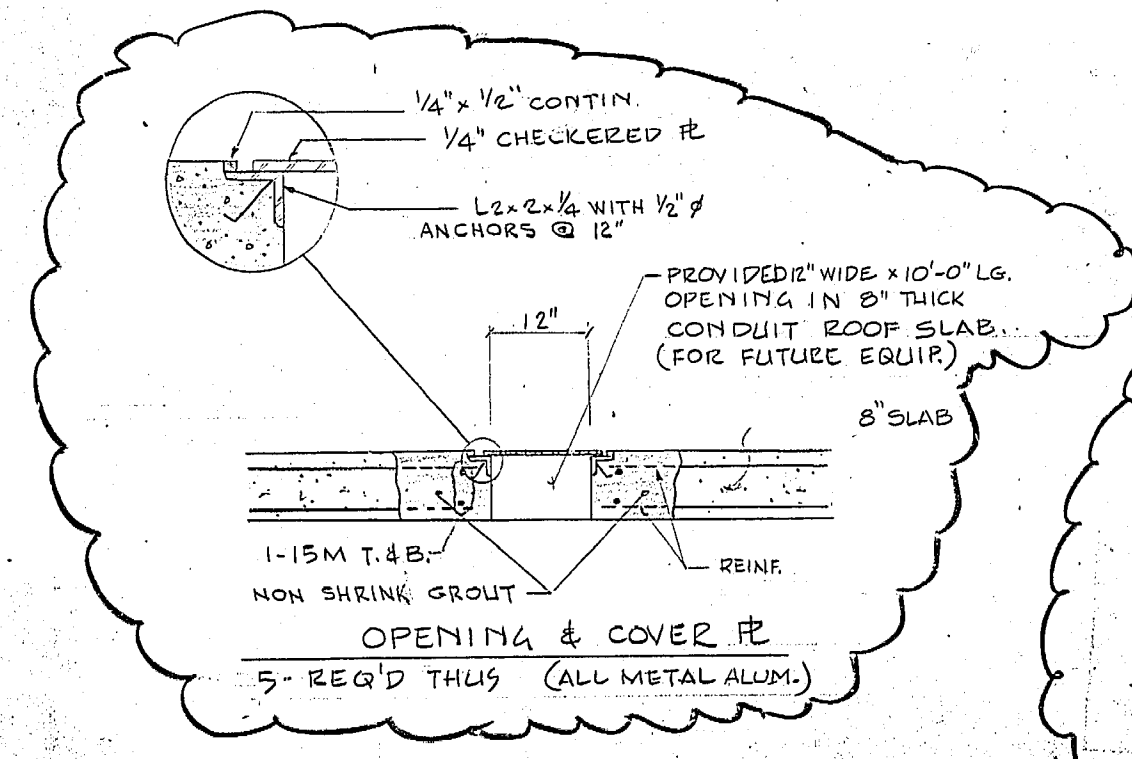
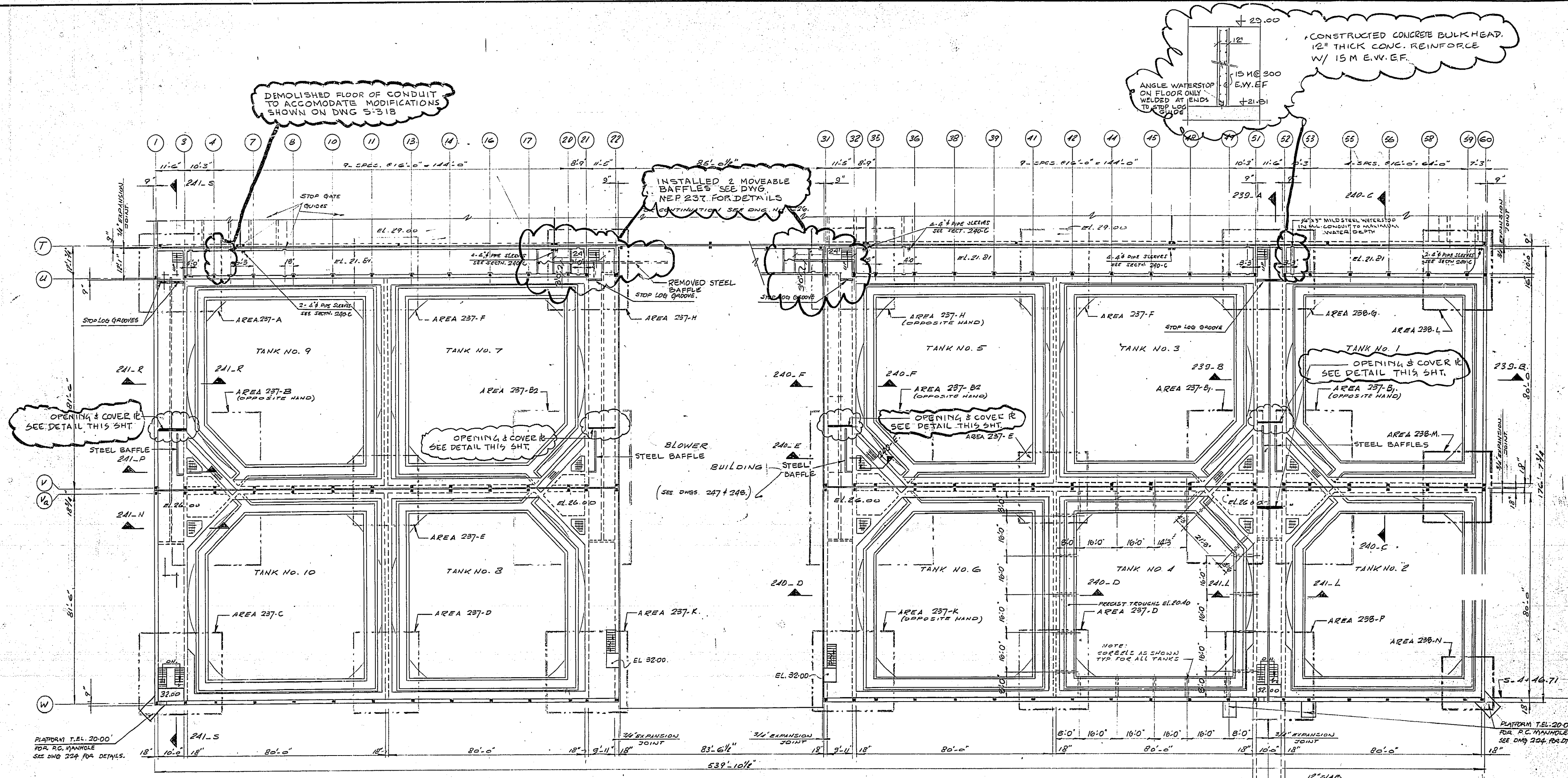


REF. OF DRAWING No. **NEP 234**
DETAILS FINAL SETTLING TANKS



PROVINCE OF MANITOBA
C. D. STEWART
 REGISTERED ENGINEER

1. The Engineer's seal applies only to the demolition and new work required on this drawing.

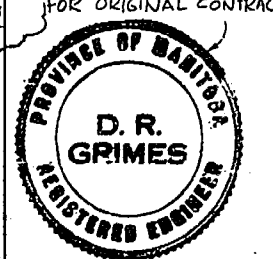
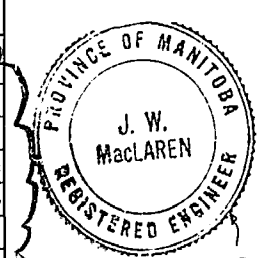
2. Dimensions and elevations shown on this drawing are in Imperial units.

NOTE: FOR DETAILS OF PRE-CAST COLUMN POCKETS SEE DWGS. 242 AND 244.

SHOP DRAWING REFERENCE		
DESCRIPTION	SUPPLIER	NUMBER
M.L. Conduit Baffles	Shoptest Iron Works	2413
Baffle Framing	Shoptest Iron Works	2417

REVISED AS CONSTRUCTED
 DATE JULY 28, 1965 BY CJA
 CHECKED BY C.A. BIANCHI

REVISIONS		
No.	DATE	DETAIL
0	8-21-65	SHOWING DEMOLITION LIMITS & NEW WORKS WITHIN EXISTING STRUCTURE
1	8-22-65	ISSUED FOR TENDER
2	8-27-65	REVISED TO AS-BUILT



AUG 1, 1965
AS BUILT

FOR ACTUAL ELEV. SUBTRACT 0.37 FT.

THE METROPOLITAN CORPORATION OF GREATER WINNIPEG
 WATERWORKS AND WASTE DISPOSAL DIVISION

NORTH END SEWAGE TREATMENT PLANT

**CONTRACT B - STRUCTURAL
 FINAL SETTLING TANKS - PLAN
 SHEET I**

APPROVED
J. W. MacLaren
 ENGINEER OF DESIGN

W. L. Wardrop Associates
 (MANAGEMENT) LIMITED
 ENGINEERING CONSULTANTS WINNIPEG

APPROVED
A. Penman
 ENGINEER OF WASTE DISPOSAL

DATE: AUGUST 15, 1963
 SCALE: 1" = 20'-0"
 DWG. No. 234 OF 315

NEP-234