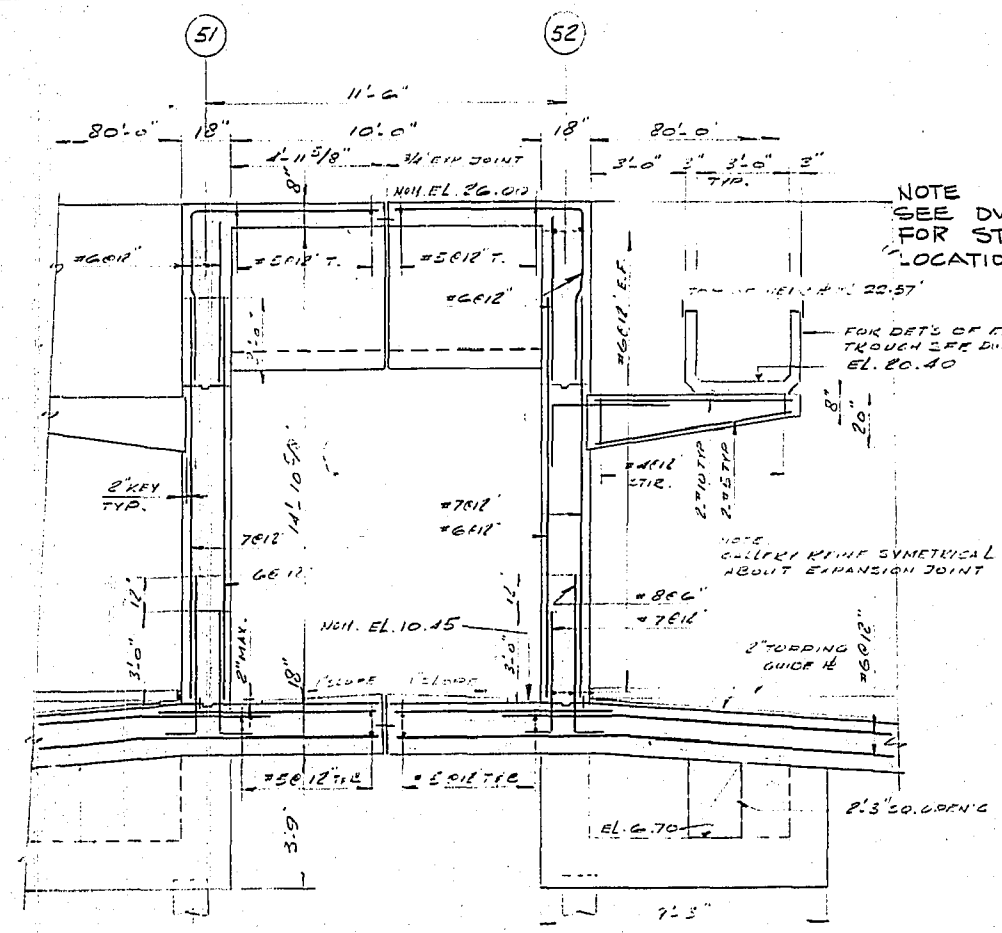
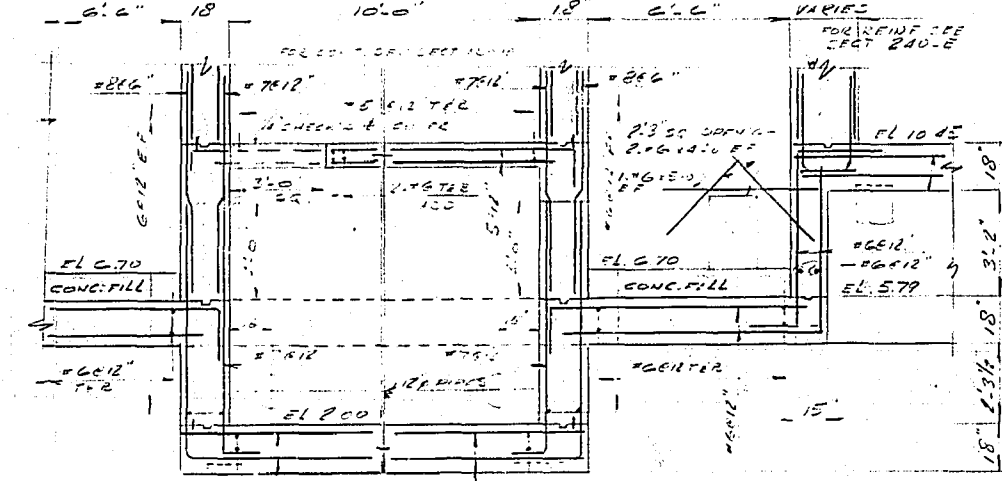


REF. OR DRAWING NO. NEP 241

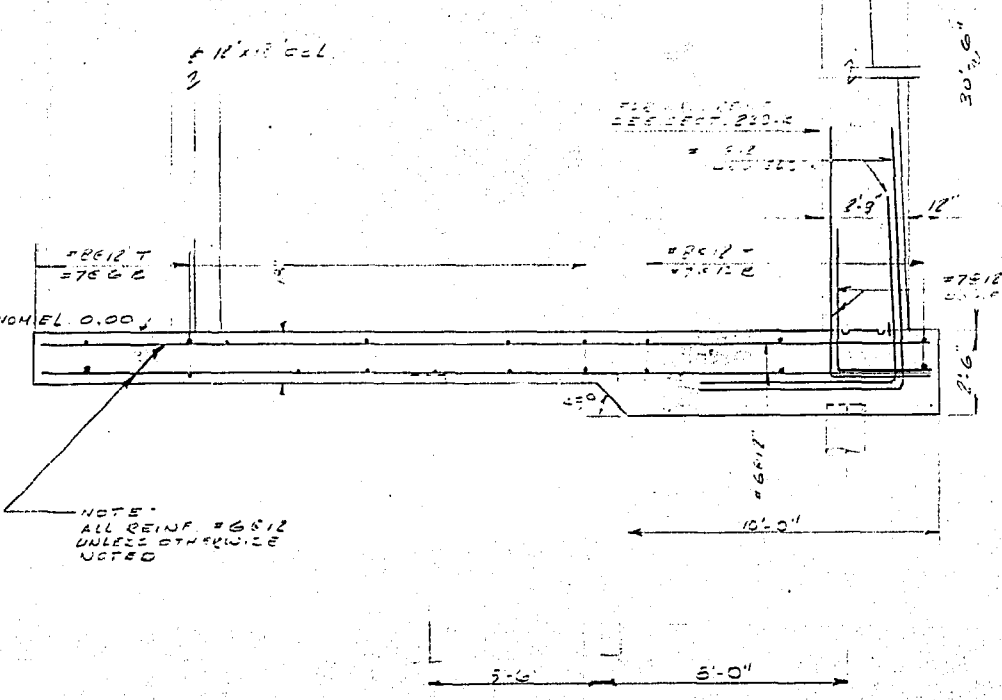
DETAILS FINAL SETTLING TANK



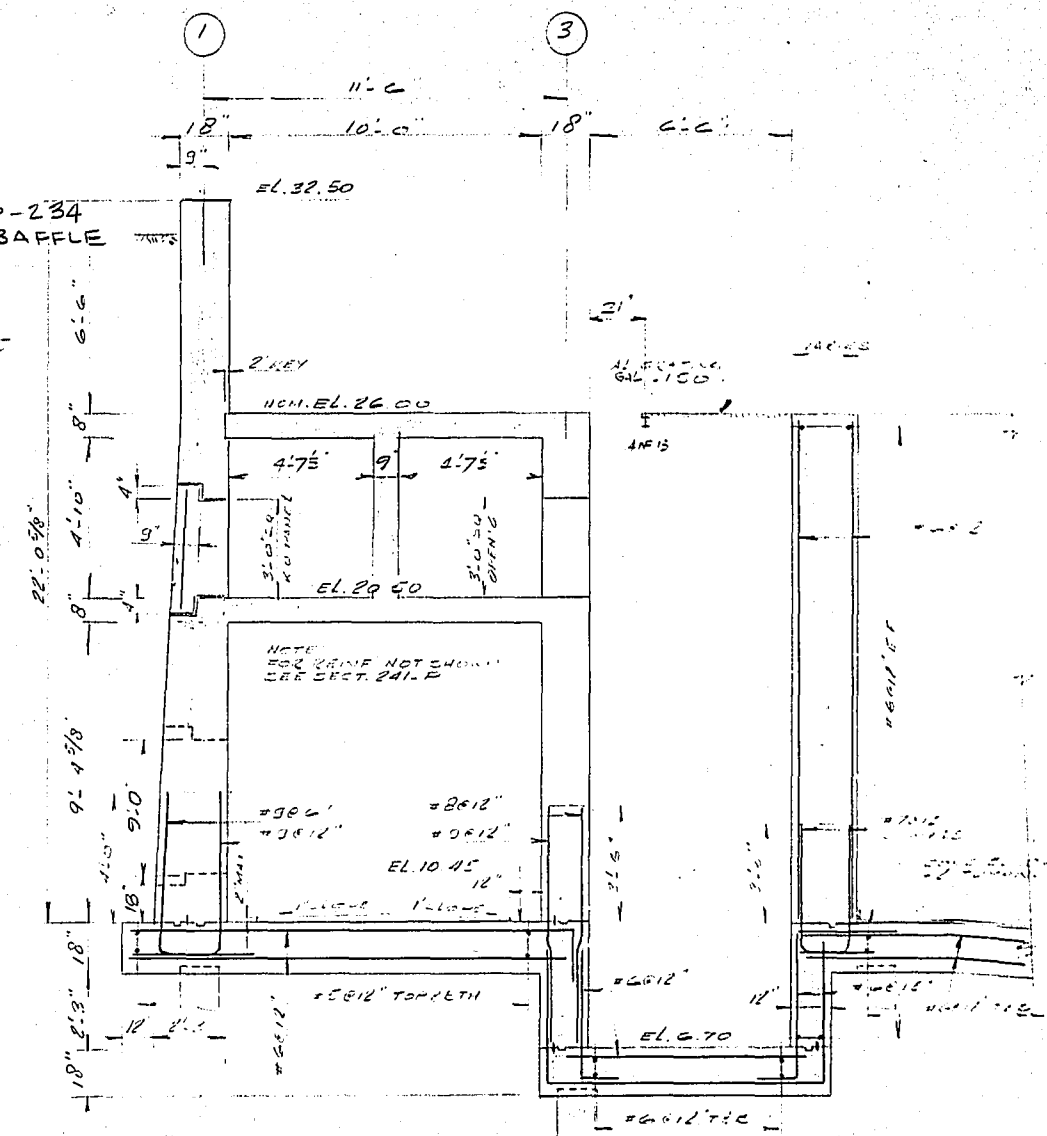
SECTION 241_L
1/4" = 1'-0"



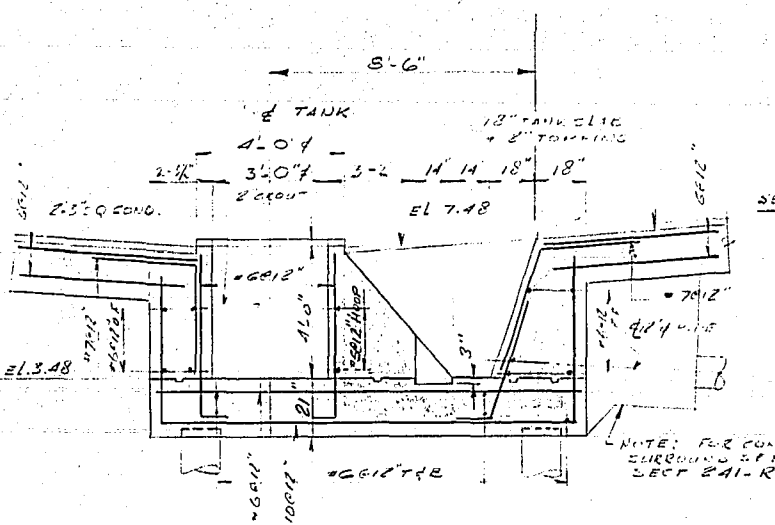
SECTION 241_M
1/4" = 1'-0"



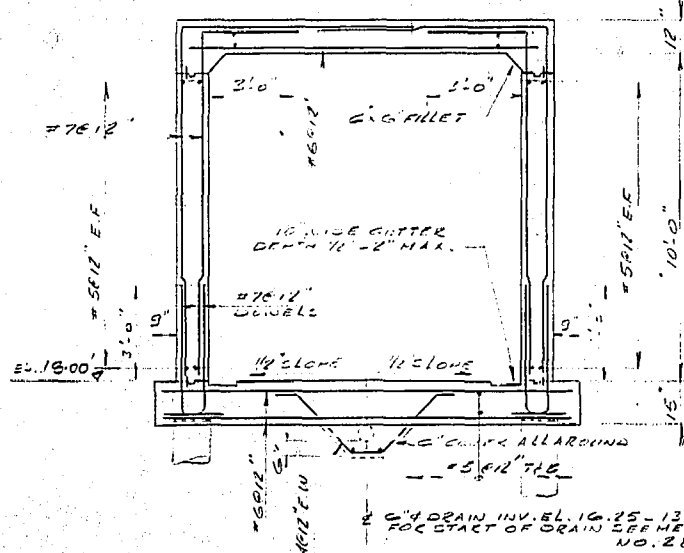
SECTION 241_T
1/4" = 1'-0"



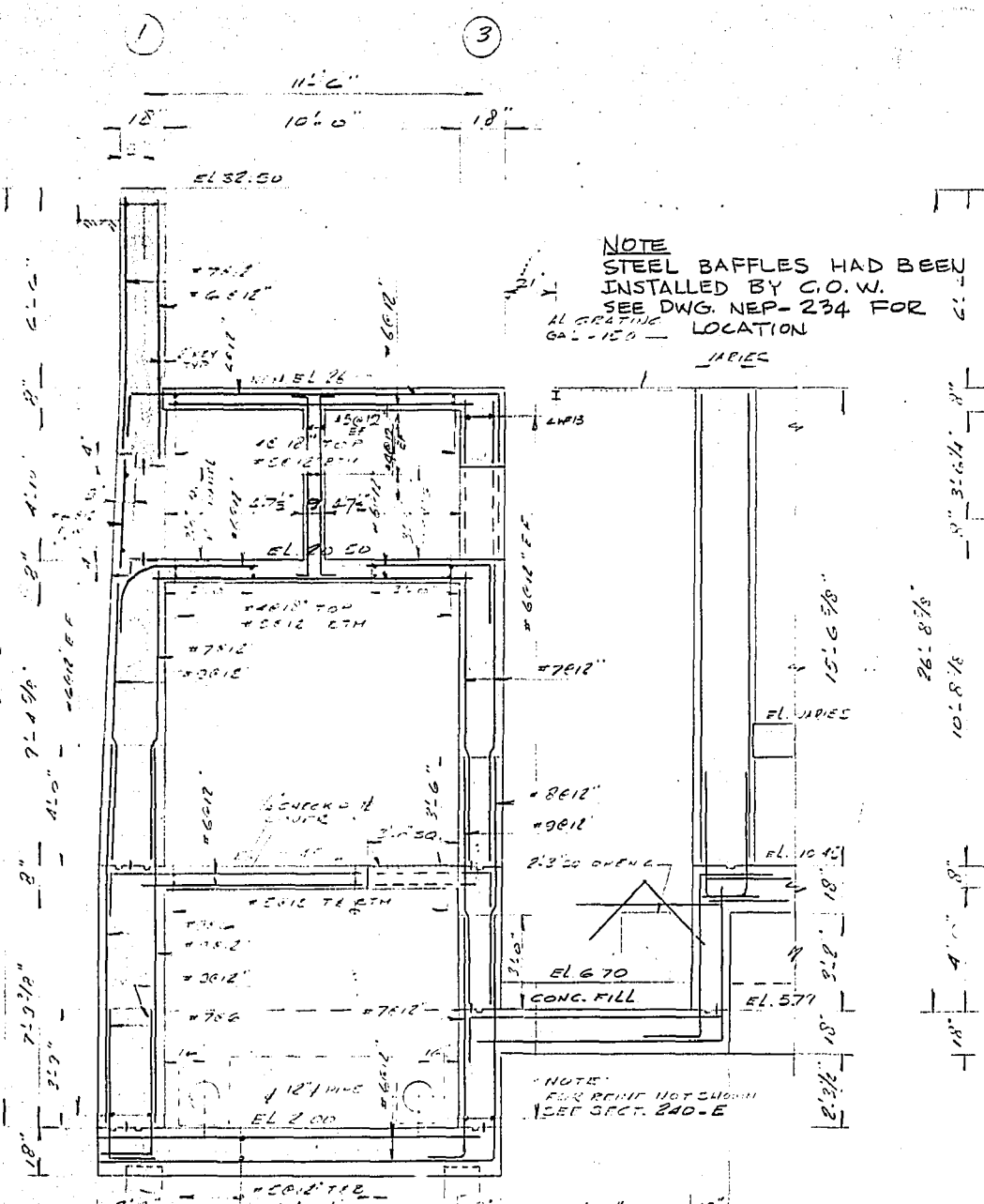
SECTION 241_N
1/4" = 1'-0"



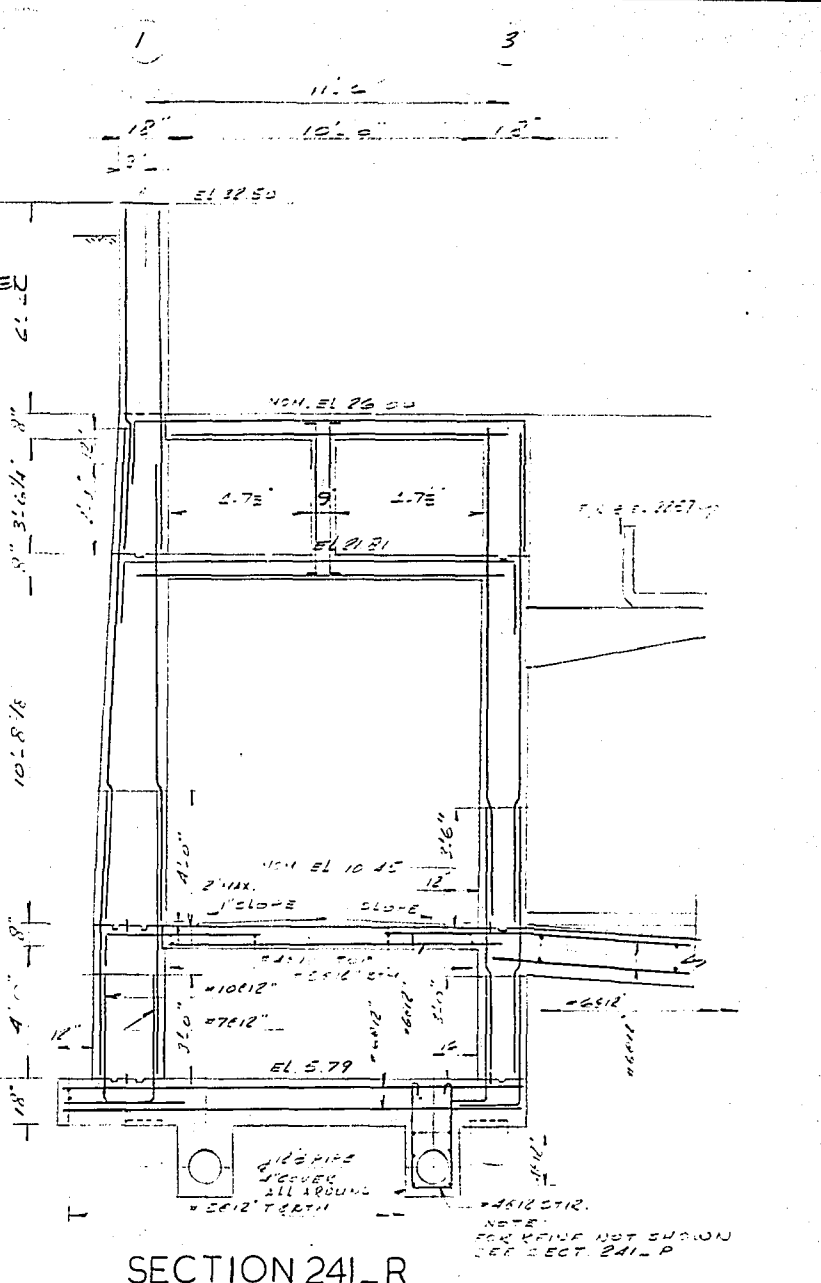
SECTION 241_U
1/4" = 1'-0"



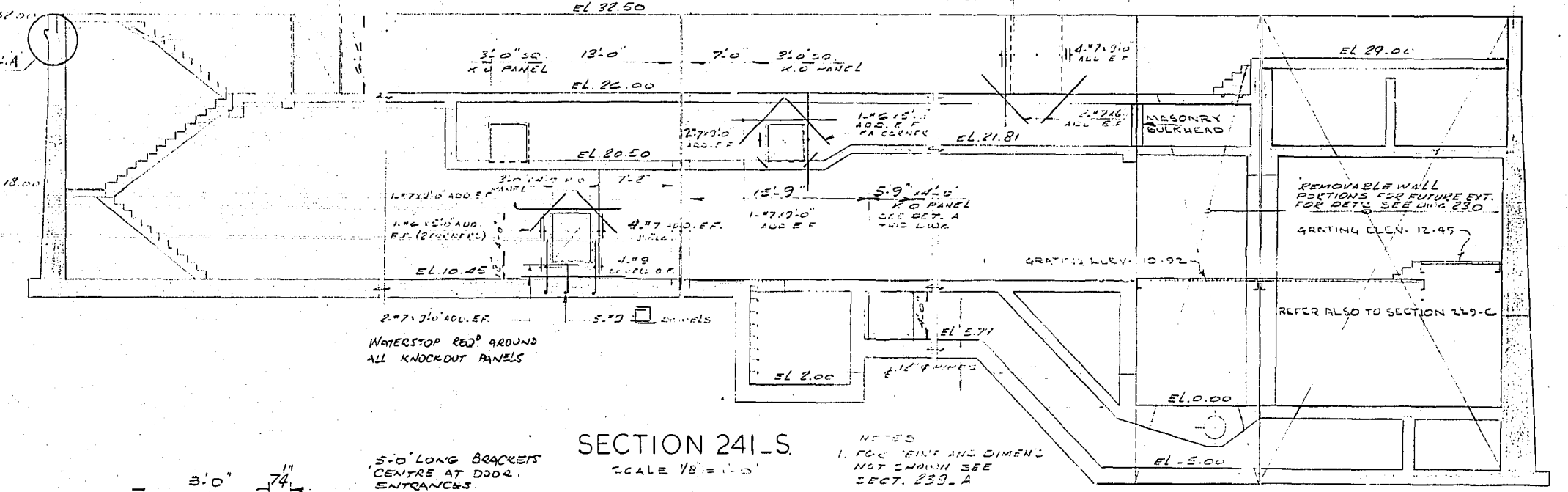
SECTION 241_V
1/4" = 1'-0"



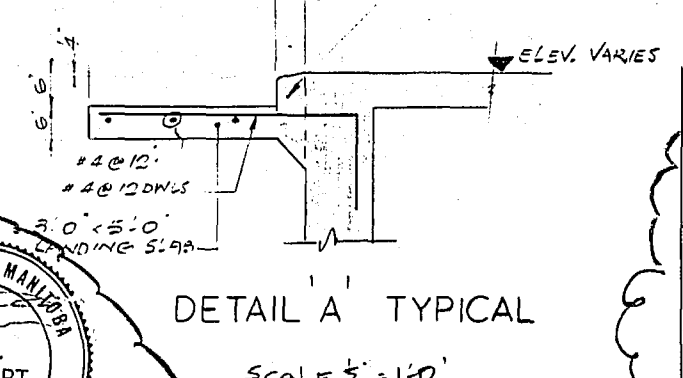
SECTION 241_P
1/4" = 1'-0"



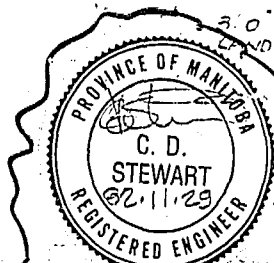
SECTION 241_R
1/4" = 1'-0"



SECTION 241_S
SCALE 1/8" = 1'-0"



DETAIL A TYPICAL
SCALE 1/2" = 1'-0"

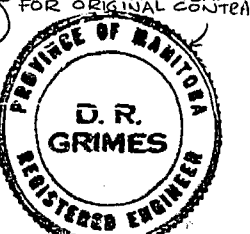
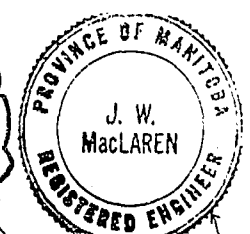


- The Engineer's seal applies only to the demolition and new work required on this drawing.
- Dimensions and elevations shown on this drawing are in Imperial units.

REVISED AS CONSTRUCTED
DATE JULY 12/85 BY CJA
CHECKED BY ALB

FOR ACTUAL ELEV.
SUBTRACT 0.27 FT.

REVISIONS		
NO.	DATE	DETAIL
0	8-24-63	SHOWING DEMOLITION LIMITS & NEW WORKS WITHIN EXISTING STRUCTURE
1	8-28-64	ISSUED FOR TENDER
2	8-27-62	REVISED TO AS-BUILT



AS BUILT

THE METROPOLITAN CORPORATION OF GREATER WINNIPEG
WATERWORKS AND WASTE DISPOSAL DIVISION

NORTH END SEWAGE TREATMENT PLANT

**CONTRACT B - STRUCTURAL
FINAL SETTLING TANKS - SECTIONS
SHEET III**

APPROVED <i>James F. MacLaren</i> ENGINEER OF DESIGN	APPROVED <i>William B. Hill</i> ENGINEER OF WASTE DISPOSAL
JAMES F. MACLAREN LIMITED ENGINEERS TORONTO	W. L. WARDROP ASSOCIATES (MANAGEMENT) LIMITED ENGINEERING CONSULTANTS WINNIPEG
DATE AUGUST 15, 1963	SCALE AS SHOWN
DWG. NO. 241 OF 315	NEP-241