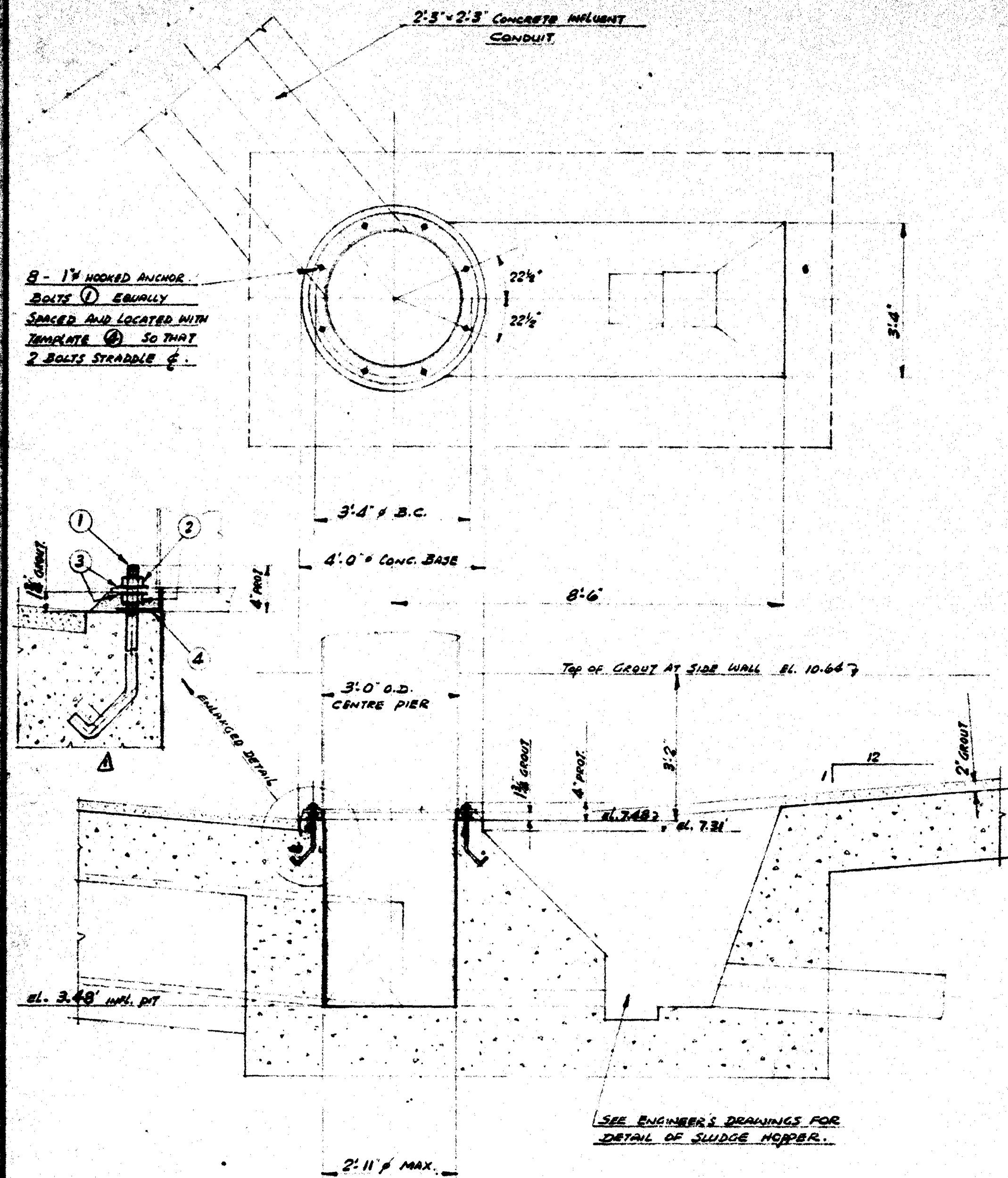
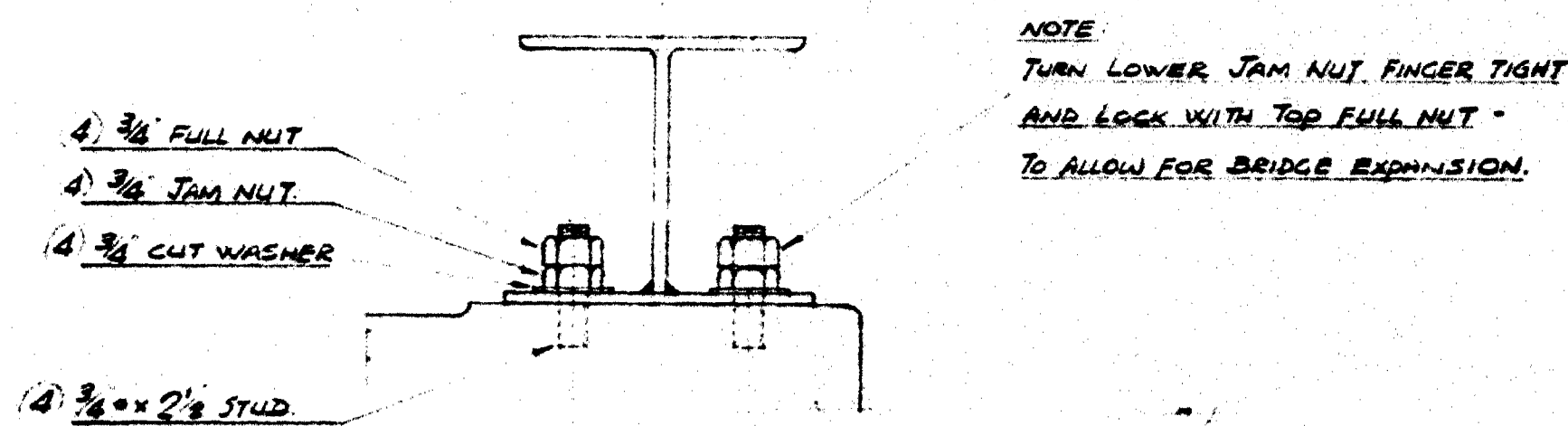


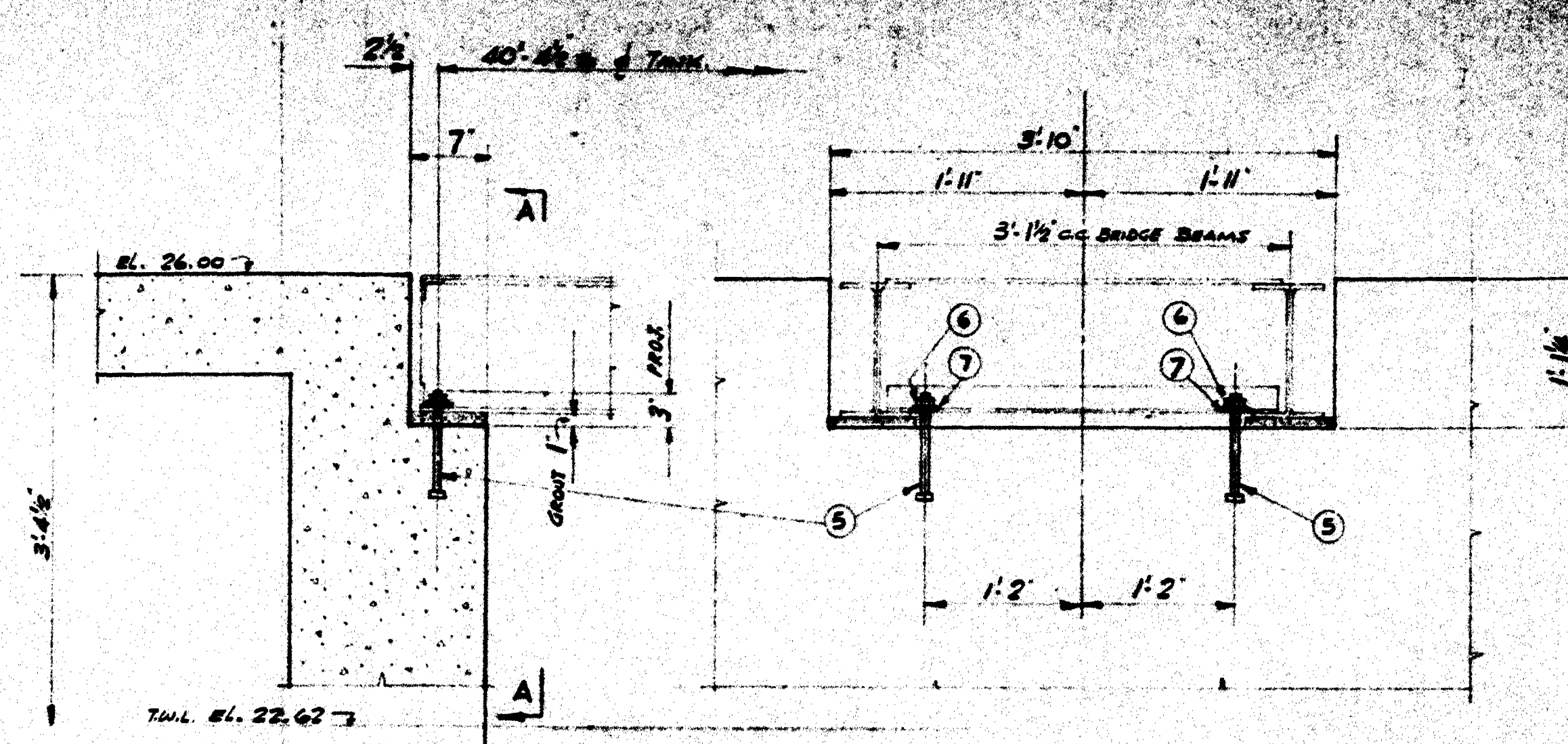
REF. or DRAWING No. 2-130-5 NEP-841
 DETAILS CIRC. SLUDGE COLLECTOR MECHANISM



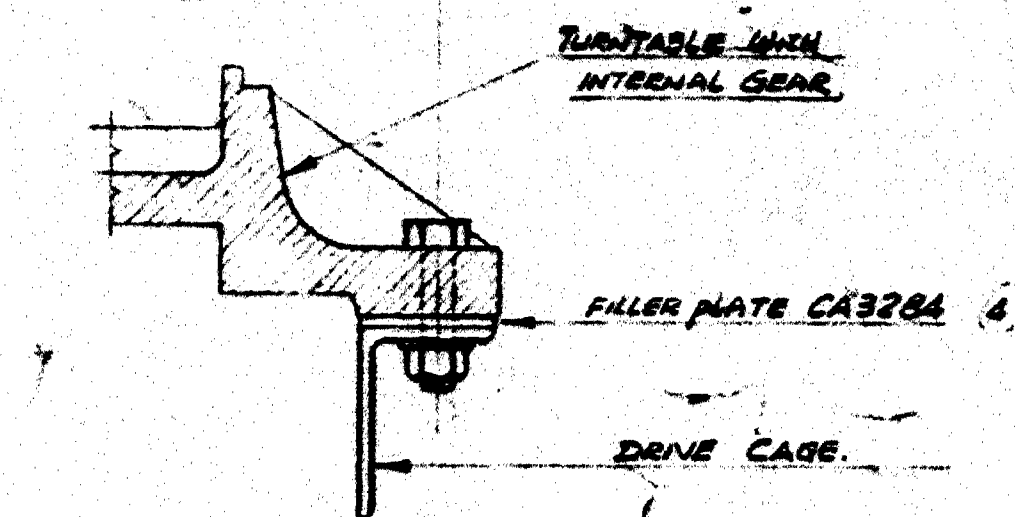
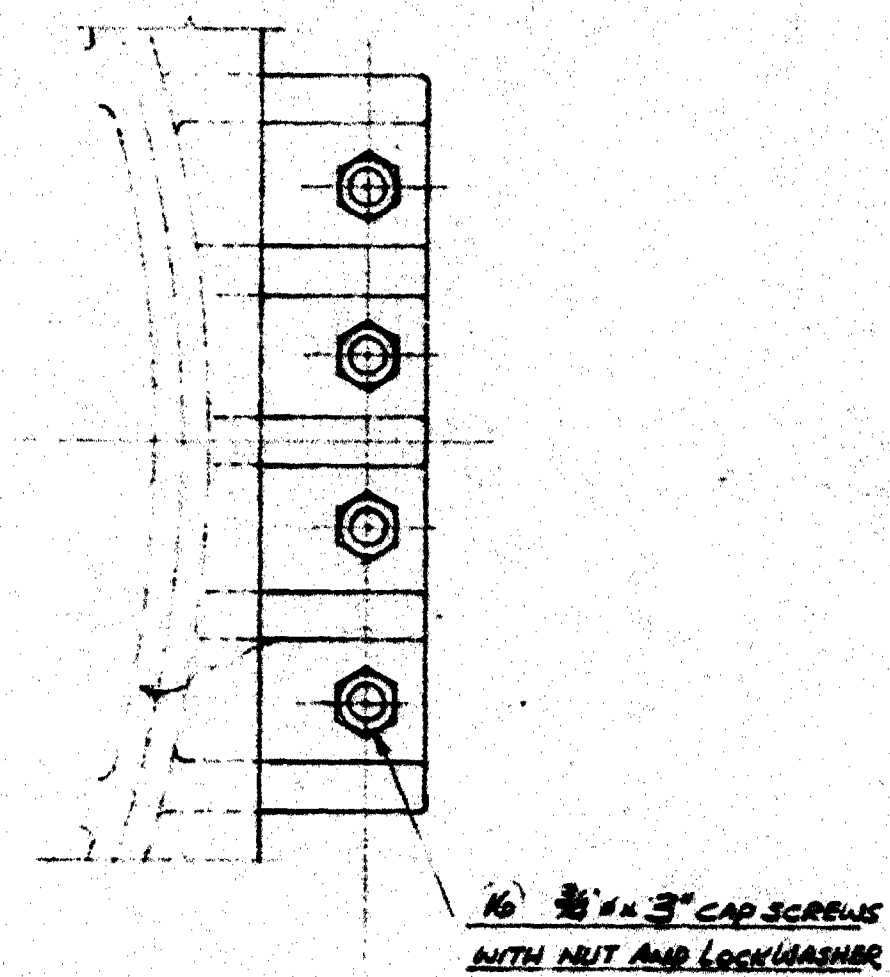
DETAIL OF INFLUENT PIT AND CENTRE PIER ANCHORS.
 SCALE 1/2" = 1'-0"



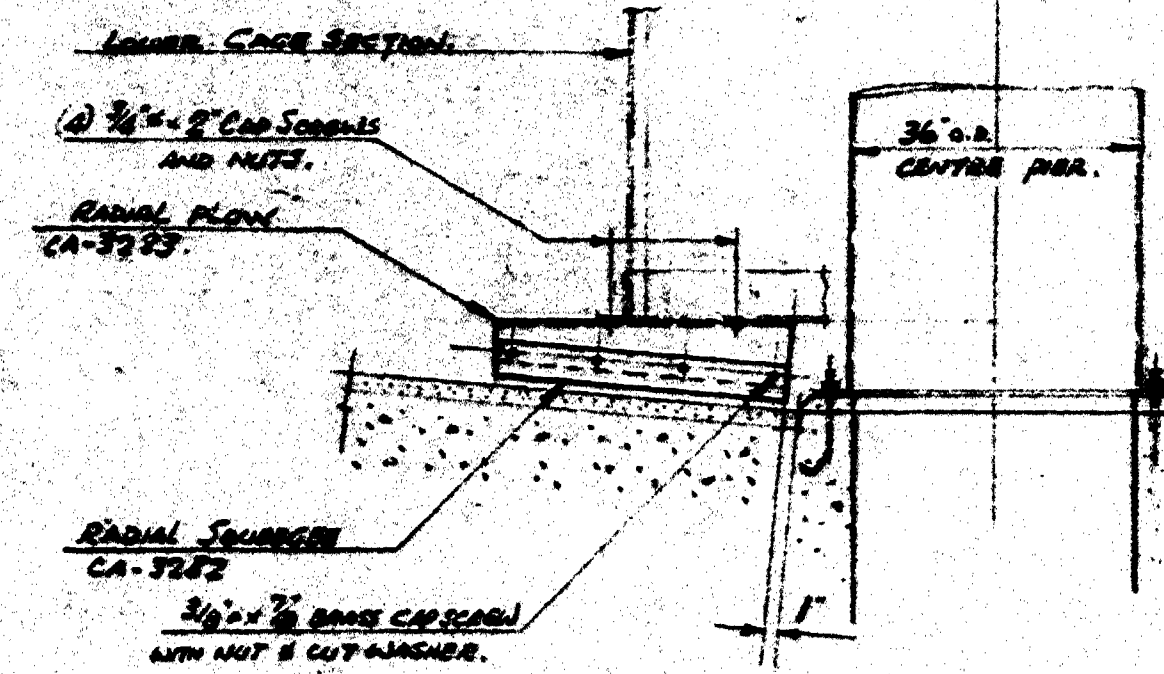
BRIDGE CONNECTION TO UPPER DRIVE HOUSING AT CENTRE OF TANK.
 SCALE 3" = 1'-0"



SECTION A-A
 DETAIL OF WALL AND ANCHORS FOR BRIDGE.
 SCALE: 1" = 1'-0"



CONNECTION OF TURNTABLE TO DRIVE CAGE
 SCALE 3" = 1'-0"



CONNECTION OF SHOOT FLOW AT CENTRE OF TANK
 SCALE 1/2" = 1'-0"

LIST OF COMPONENTS					
NO.	QTY.	ITEM	NOTE	UNIT	REMARKS
MATERIAL FOR ONE COLLECTOR MECHANISM					
1	8	109-7542	1" ST. CAD. PLATED HEX HD BOLTS	1	8
2	16		1" ST. CAD. PLATED W/ASHERS		
3	16		1" ST. CAD. PLATED CUT W/ASHERS		
4	1	365592-107	TEMPLATE (FOR LOCATING ①)		
5	2		3/8" CAD. PLATED STEEL BOLTS	2	9
6	2		3/8" CAD. PLATED FULL NUTS		
7	2		3/8" CAD. PLATED CUT W/ASHERS		

NEP-841

2-130-5

CONFIDENTIAL - ALL RIGHTS RESERVED - PROPERTY OF REX CHAINBELT (CANADA) LTD.	
MISCELLANEOUS DETAILS FOR REX HC-56 CIRCULAR SLUDGE COLLECTOR MECHANISM	
SC. 173	609-841