

603-80047

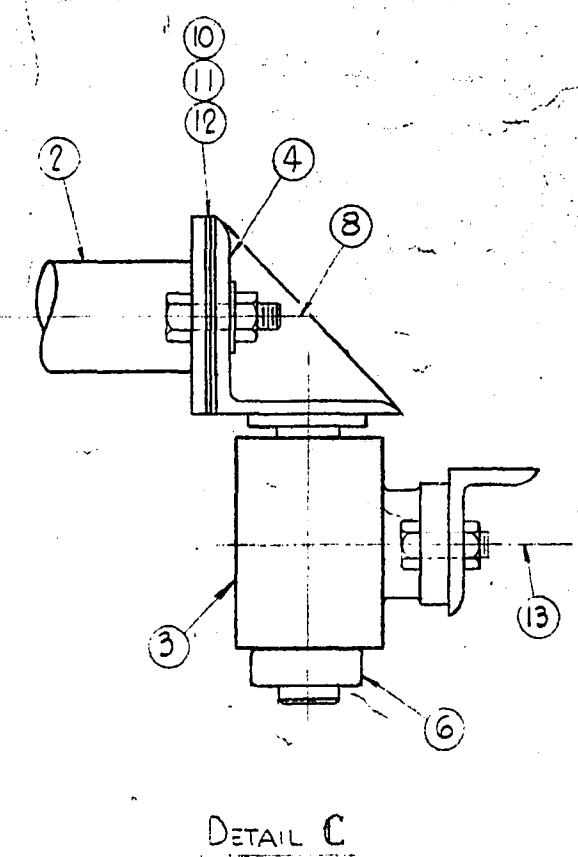
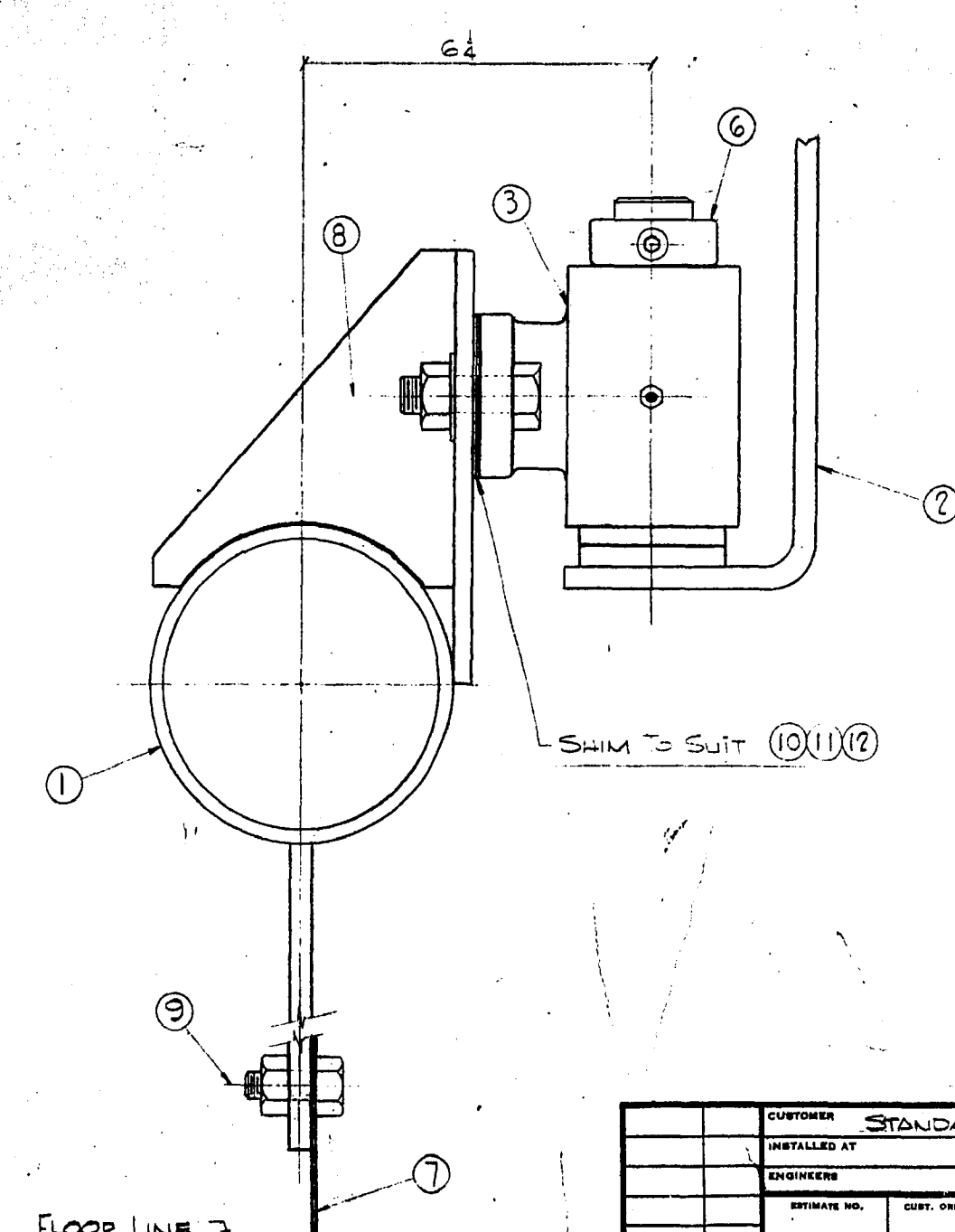
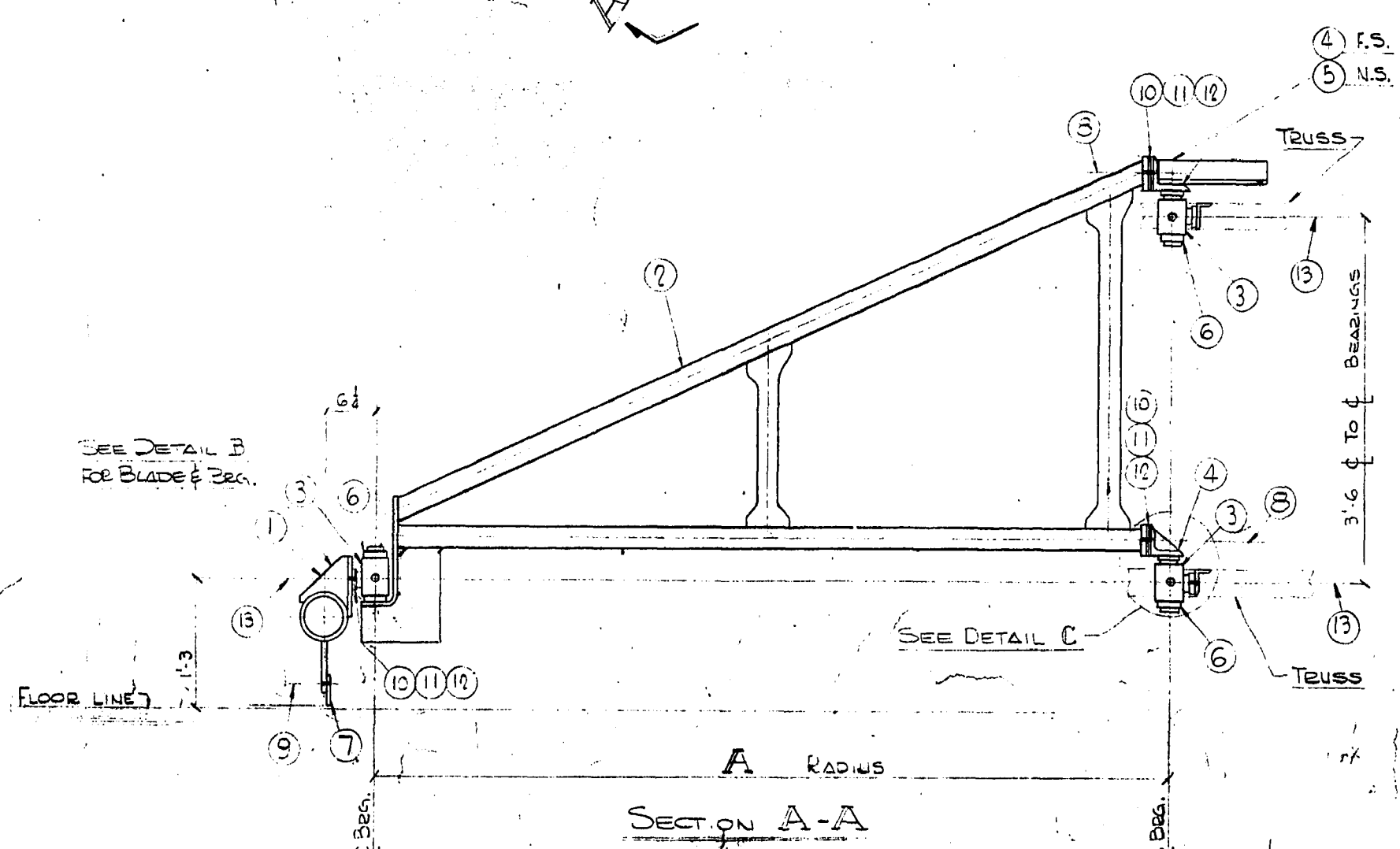
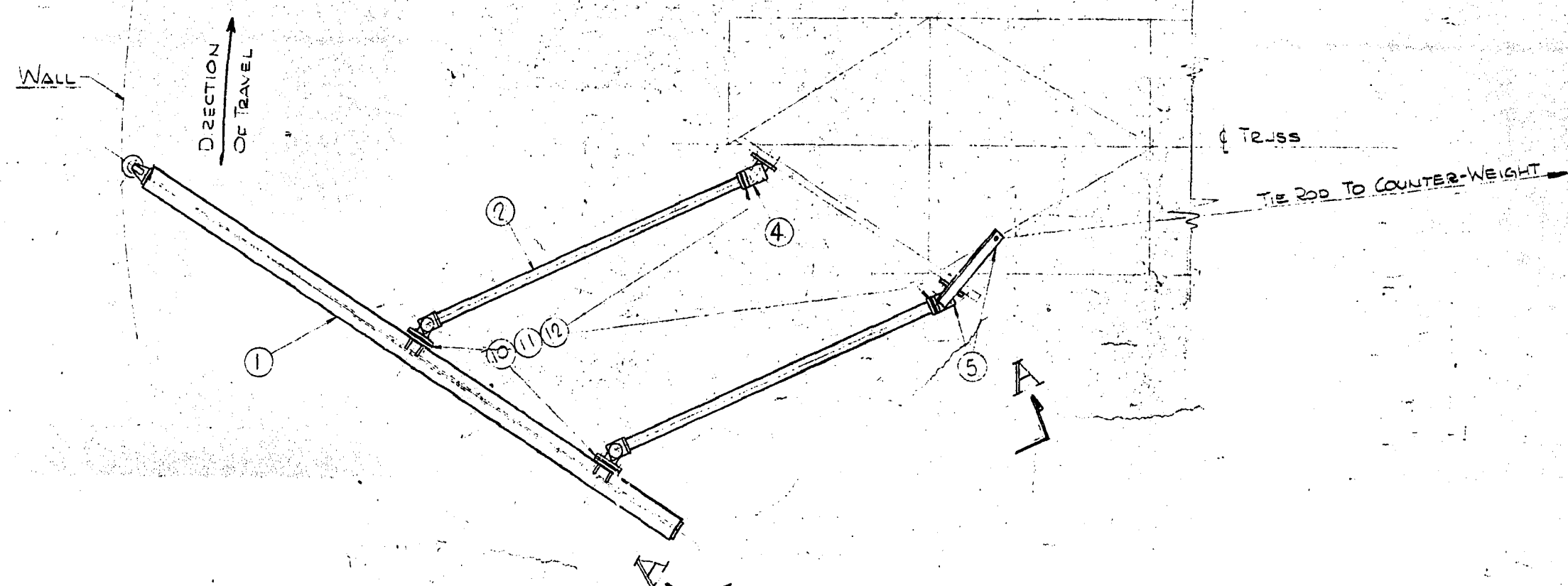
P.M.I. NUMBER	SQUARE TANK FT.	RADIUS IN FEET	PART NUMBER							QUAN.	WEIGHT IN LBS.
			A	B	C	D	E	F	G		
603-80047-80	80' 0"	3' 0"	503-167-80	503-166-80	103-80187-1				17		520

LIST OF COMPONENTS FOR WEIGHTS SEE TABLE 603-80047

NOTE: REFERENCE TO PARTS IN THIS LIST IS FOR IDENTIFICATION ONLY. ALL COMPONENTS ARE TO BE ORDERED FROM THE SUPPLIER LISTED UNLESS SPECIFIED OTHERWISE.

ITEM NO.	QUANTITY	PART NUMBER	DESCRIPTION
1	1	B	SCRAPER BLADE EXTENSION
2	2	C	SCRAPER BLADE EXTENSION IRV
3	6	503-166-80	3/4 DIA. CAST JOURNAL BEARING
4	3	503-40155-80	BRACKET & SHAFT
5	1	503-167-80	PIVOT ARM BRACKET & SHAFT
6	6		1 3/4 DIA SET COLLAR
7	1	D	SQUEEGEE
8	6		5/8 x 2 HEX. HD. CAP. SCR. W/ L.W. & NUT. CADRE
9	6		3/8 x 1/2 L.C. BRASS CAP SCR W/ C.W. & NUT
10	6	103-80285-1	SHIMS
11	6	103-80285-2	SHIMS
12	6	103-80285-3	SHIMS
13	12		1/2 x 1 3/4 CAP SCR W/ NUT & L.W. CADRE

REF. or DRAWING NO. 6-130-5 NEP-845 DETAILS SCRAPER BLADE EXT.



NEP-845

CUSTOMER: STANDARD		CONFIDENTIAL--ALL RIGHTS RESERVED--PROPERTY OF CHAIN BELT COMPANY MILWAUKEE 1, WISCONSIN	
ENGINEERS	ESTIMATE NO.	CUST. ORDER NO.	GEN. DWR. NO.
PAINT SPECIFICATION: ALL ITEMS TO RECEIVE COATS BEFORE SHIPMENT		IN CHARGE	DATE: 10-17-69
MATL. SPEC.	DRY. SPEC.	DRY. SPEC.	DRY. SPEC.
PROCESS SPEC.	APP. SPEC.	APP. SPEC.	APP. SPEC.
CONVEYOR & PROCESS EQUIPT. DIV.		3	603-800