

LIST OF COMPONENTS STRL. STL. WT. LBS. SEE TABLE "E" 326700

NOTE: REFERENCE SYMBOLS, WHERE SHOWN, ARE TO ASSIST IN LOCATING COMPONENTS IN DIFFERENT VIEWS OF THIS DRAWING. ONLY ALL LENGTHS ARE FINAL LENGTHS UNLESS SPECIFIED AS ROUGH ("RGH").

REF. SYMBOL	QUANTITY	PART NUMBER	PART NAME OR MATERIAL SIZE AND DESCRIPTION	MATERIAL SPEC. (ENGR. STD. NO.)	LENGTH (FEET)	INCHES
MATERIAL REQ FOR ONE MK NO. (SEE TABLE)						
1	1	326689-102	PIER CAP			
2	2		R 1/4 X 56 1/2		SEE TABLE C	
3	2		R 1/4 X 56 1/2		SEE TABLE D	
4	2		BAR 3/4 X 4		6	2
5	4		R 1/4 X 18		3	4 1/2

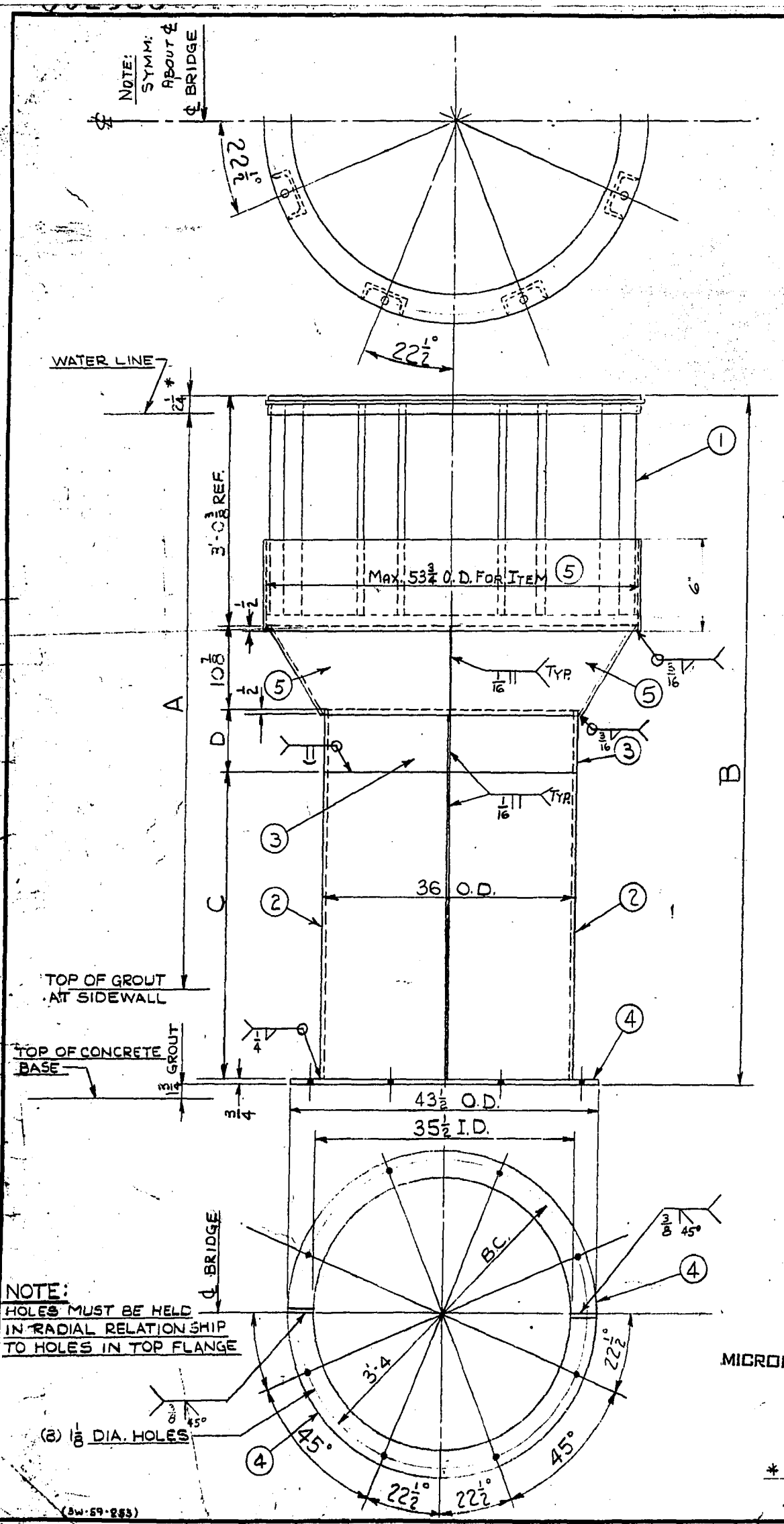
MATERIAL REQ'D FOR ONE MK. NO. 134 (SC. 173)

1	1	326689-102	PIER CAP		
2	1		R 1/4 X 112 1/2	7	0
3	1		R 1/4 X 112 1/2	5	3 1/2
4	2		BAR 3/4 X 4	6	2
5	4		R 1/4 X 18	3	4 1/2

MARK NO	TANK DIA.	SW.D. A	TOTAL HEIGHT B	LENGTH ITEM ② C	LENGTH ITEM ③ D	STR. WT. LBS. E	FIN. WT. LBS. F
101	75'-0	8'-0	11'-0	7'-0	0	1634	1502
102	75'-0	8'-6	11'-6	7'-6	0	1682	1550
103	75'-0	9'-0	12'-0	8'-0	0	1729	1597
104	75'-0	9'-6	12'-6	8'-6	0	1777	1645
105	75'-0	10'-0	13'-0	9'-0	0	1825	1693
106	75'-0	10'-6	13'-6	9'-6	0	1873	1741
107	75'-0	11'-0	14'-0	10'-0	0	1920	1788
108	75'-0	11'-6	14'-6	10'-0	6	1968	1836
109	75'-0	12'-0	15'-0	10'-0	10	2015	1883
110	75'-0	12'-6	15'-6	10'-0	14	2063	1931
111	75'-0	13'-0	16'-0	10'-0	18	2111	1979
112	80'-0	8'-0	11'-2 1/2	7'-2 1/2	0	1654	1522
113	80'-0	8'-6	11'-8 1/2	7'-8 1/2	0	1702	1570
114	80'-0	9'-0	12'-4 1/2	8'-4 1/2	0	1749	1617
115	80'-0	9'-6	13'-0 1/2	9'-0 1/2	0	1797	1665
116	80'-0	10'-0	13'-6 1/2	9'-6 1/2	0	1845	1713
117	80'-0	10'-6	14'-2 1/2	10'-0	0	1893	1761
118	80'-0	11'-0	14'-8 1/2	10'-0	4	1940	1808
119	80'-0	11'-6	15'-4 1/2	10'-0	8	1988	1856
120	80'-0	12'-0	16'-0 1/2	10'-0	12	2035	1903
121	80'-0	12'-6	16'-6 1/2	10'-0	16	2083	1951
122	80'-0	13'-0	17'-2 1/2	10'-0	20	2131	1999
123	85'-0	8'-0	11'-5	7'-5	0	1674	1542
124	85'-0	8'-6	12'-1	8'-1	0	1722	1590
125	85'-0	9'-0	12'-7	8'-7	0	1769	1637
126	85'-0	9'-6	13'-3	9'-3	0	1817	1685
127	85'-0	10'-0	13'-9	9'-9	0	1865	1733
128	85'-0	10'-6	14'-5	10'-5	0	1913	1781
129	85'-0	11'-0	15'-1	10'-5	5	1960	1828
130	85'-0	11'-6	15'-7	10'-5	10	2008	1876
131	85'-0	12'-0	16'-3	10'-5	15	2055	1923
132	85'-0	12'-6	16'-9	10'-5	20	2103	1971
133	85'-0	13'-0	17'-5	10'-5	25	2151	2019
134	80'-0	11'-1 1/2	16'-3 1/2	7'-0	5'-3 1/2	2138	2006

NEP-846

DISTRIBUTION OF TRACINGS	100	9	10V	103																
--------------------------	-----	---	-----	-----	--	--	--	--	--	--	--	--	--	--	--	--	--	--	--	--



MICROFILMED

* 1'-3 1/2" FOR MK. NO. 134.

CUSTOMER STANDARD		CONFIDENTIAL--ALL RIGHTS RESERVED--PROPERTY OF	
INSTALLED AT		CHAIN BELT COMPANY	
ENGINEERS		MILWAUKEE 1, WISCONSIN	
ESTIMATE NO.	CUST. ORDER NO.	GEN. DWG. NO.	UNIT
PAINT SPECIFICATION: ALL ITEMS TO RECEIVE COATS SEE B/M PAINT BEFORE SHIPMENT		SCALE: 1"=1'-0"	DIMENSIONS IN INCHES IF NOT SPECIFIED
MAT'L SPEC.	ENGR. STD. NO.	DATE 9-17-59	D'R'N CEW
PROCESS SPEC.	ENGR. STD. NO.	DATE 9-15-59	C'K'D P.K.K.
ORIGINAL ISSUE	ENGR. STD. NO.	DATE	APPROV'D
ENGR. CHANGE NOTICE NO.	CHANGE NO. INCL.	CONVEYOR & PROCESS EQUIP'T DIV.	3
PART OR ORDER NO.		DRAWING NO. 326700	