

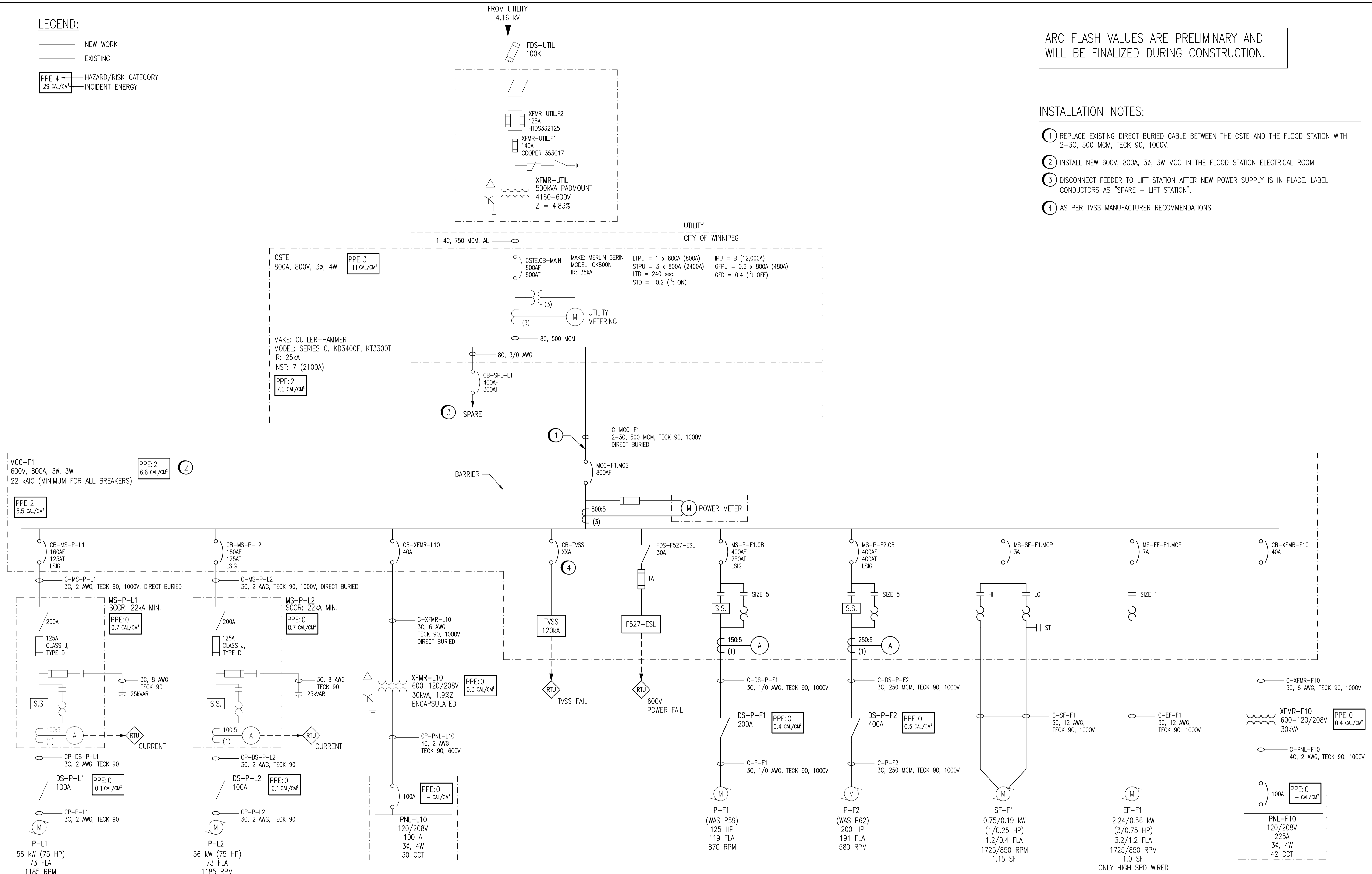
LEGEND:

- NEW WORK
- EXISTING
- HAZARD/RISK CATEGORY
- INCIDENT ENERGY

ARC FLASH VALUES ARE PRELIMINARY AND WILL BE FINALIZED DURING CONSTRUCTION.

INSTALLATION NOTES:

- REPLACE EXISTING DIRECT BURIED CABLE BETWEEN THE CSTE AND THE FLOOD STATION WITH 2-3C, 500 MCM, TECK 90, 1000V.
- INSTALL NEW 600V, 800A, 3Ø, 3W MCC IN THE FLOOD STATION ELECTRICAL ROOM.
- DISCONNECT FEEDER TO LIFT STATION AFTER NEW POWER SUPPLY IS IN PLACE. LABEL CONDUCTORS AS "SPARE - LIFT STATION".
- AS PER TVSS MANUFACTURER RECOMMENDATIONS.



LAST SAVE: 2011/11/23 - 10:14am  
PATH: M:\505581\ENGV47ELE\DD - General DWG\1-0157A-E0001-001-02.dwg

DRAWING NUMBER	REFERENCE DRAWINGS
----------------	--------------------

**APECM**  
Certificate of Authorization  
SNC-Lavalin Inc.  
No. 4489

DESIGNED BY:	B. CLEVEN	CHECKED BY:	C. REIMER
DRAWN BY:	S. FUNK	APPROVED BY:	C. REIMER
SCALE:	NTS	RELEASED FOR CONSTRUCTION BY:	V. JEANCART
DATE:	2010/12/06	DATE:	2011/11/15
CONSULTANT NO.:	505581-0000-47DD-0000		

**SNC-LAVALIN INC.**  
148 Nature Park Way  
Winnipeg, MB, Canada R3P 0X7  
204-798-8080

ENGINEER'S SEAL

ORIGINAL DRAWING  
SEALED BY:  
C. J. REIMER  
SNC-LAVALIN INC.  
MEMBER #21968  
2011/11/15  
REV. 02

**THE CITY OF WINNIPEG**  
WATER AND WASTE DEPARTMENT

MAGER DRIVE FLOOD AND WASTEWATER PUMPING STATIONS

SINGLE LINE DIAGRAM

CITY DRAWING NUMBER	SHEET	REV.	SIZE
1-0157A-E0001	001	02	A1