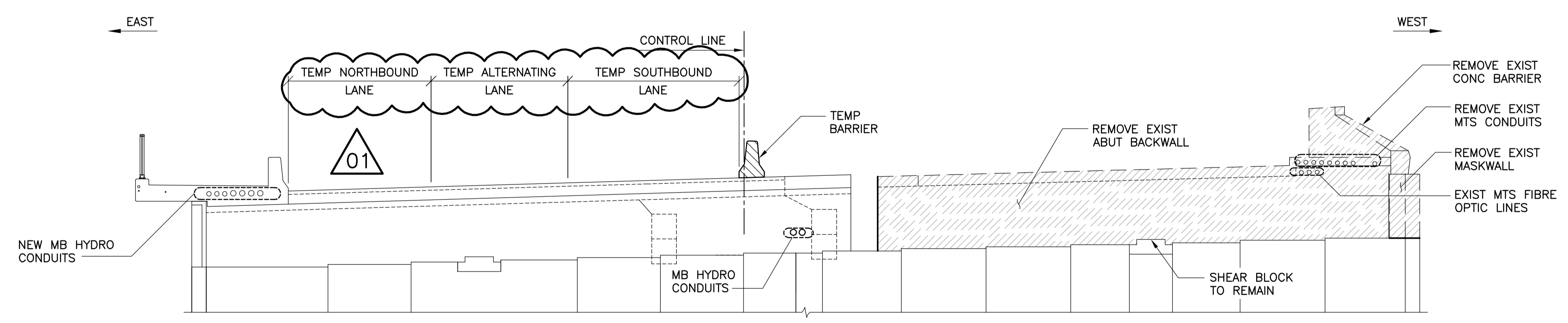


PLAN - SOUTH ABUTMENT PHASE 2 REMOVAL
1 : 75

- CONTRACTOR IS RESPONSIBLE TO LOCATE, PROTECT AND UNDERTAKE ALL WORKS WITHOUT DAMAGING THE EXISTING MTS FIBRE OPTIC LINES



ELEVATION - SOUTH ABUTMENT PHASE 2 REMOVAL
1 : 75



B.M. ELEV.	F.B.	NO.	REVISIONS	DATE	BY
		01	ISSUED FOR ADDENDUM 1	11.03.07	RHW
		00	ISSUED FOR TENDER	11.02.18	RHW

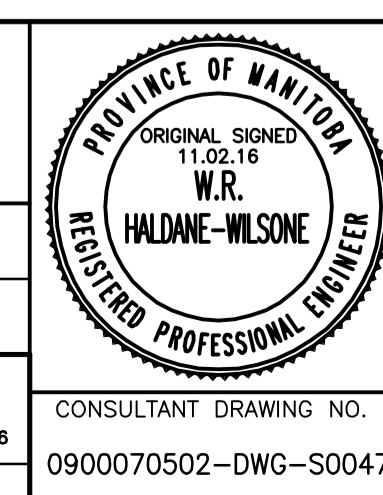
WARDROP
ATETRA TECH COMPANY

DESIGNED BY: S.Y. CHECKED BY: R.H.W.
DRAWN BY: B.M. APPROVED BY: R.H.W.

HOR. SCALE: AS NOTED DATE: 10.10.20
VERTICAL: AS NOTED DATE: 10.10.20

RELEASED FOR CONSTRUCTION ORIGINAL SIGNED 11.02.18
DATE: 10.10.20

MAIT CHSLETT, P. ENG.
BRIDGE PROJECTS ENGINEER



THE CITY OF WINNIPEG
PUBLIC WORKS DEPARTMENT
ENGINEERING DIVISION

OSBORNE STREET BRIDGE
REHABILITATION & RELATED WORKS

SOUTH ABUTMENT AND APPROACH SLAB
PHASE 2 REMOVAL

CITY DRAWING NUMBER
B109-11-052
SHEET 47 OF 131

CONSULTANT DRAWING NO.
0900070502-DWG-S0047

47