

SEQUENCE OF PHASE 1 DECK CONSTRUCTION:

1. COMPLETE STRUCTURAL REMOVALS (PHASE 1).
2. REPLACE BRIDGE BEARINGS OVER PIERS AND ABUTMENTS AND REPAIR EXISTING PT TENDONS OVER THE PIERS PRIOR TO THE CONSTRUCTION OF ANY NEW CONCRETE.
3. PLACE TOP MAT OF DECK SLAB REINFORCING.
4. CAST NEW 90± CONCRETE DECK SLAB IN THE SPECIFIED POUR SEQUENCE.
5. CAST THE NEW CONCRETE OVERHANG IN THE SPECIFIED POUR SEQUENCE.
6. CONSTRUCT NEW CONCRETE SHOULDER BARRIERS IN SPECIFIED POUR SEQUENCE.
7. CAST NEW 50 MIN HPC OVERLAY TO ACHIEVE THE DESIGN SIDEWALK PROFILE.
8. CAST NEW 50 MIN SIDEWALK WSC OVERLAY TO ACHIEVE THE DESIGN SIDEWALK PROFILE.
9. INSTALL NEW ALUMINUM PEDESTRIAN HANDRAIL
10. INSTALL NEW STREET LIGHTS (BY MB HYDRO).



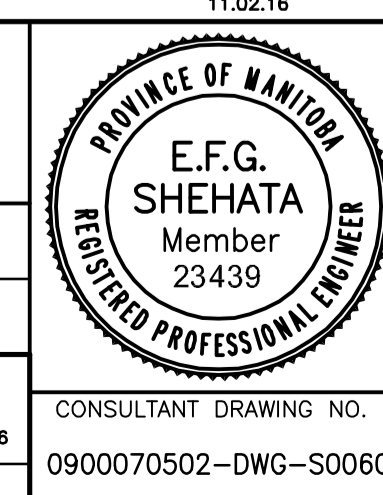
| B.M. ELEV. | F.B. | DATE | BY |
|------------|------|----------|-----|
| | | 11.03.07 | EFS |
| | | 11.02.18 | EFS |
| | | | |
| | | | |

WARDROP
ATETRA TECH COMPANY

DESIGNED BY: V.B. CHECKED BY: E.F.S.
 DRAWN BY: B.M. APPROVED BY: R.H.W.

HOR. SCALE: AS NOTED
 VERTICAL: AS NOTED

RELEASED FOR CONSTRUCTION ORIGINAL SIGNED DATE: 11.02.18
 DATE: 10.10.13



THE CITY OF WINNIPEG
PUBLIC WORKS DEPARTMENT
ENGINEERING DIVISION

OSBORNE STREET BRIDGE
REHABILITATION & RELATED WORKS

BRIDGE DECK -
PHASE 1 CONSTRUCTION

CITY DRAWING NUMBER: B109-11-065
 SHEET OF: 60 OF 131

CONSULTANT DRAWING NO.: 0900070502-DWG-S0060

DATE: 11.02.18

| ITEM | DESCRIPTION |
|--------|--|
| POUR 1 | NEW 90± CONC DECK SLAB 1.1, 1.2, 1.3 & 1.4 |
| POUR 2 | NEW CONC DECK OVERHANG 2.1, 2.2, 2.3 & 2.4 |
| POUR 3 | NEW CONC SHOULDER BARRIER 3.1, 3.2, REFER TO SPECIFICATION FOR DETAILS |