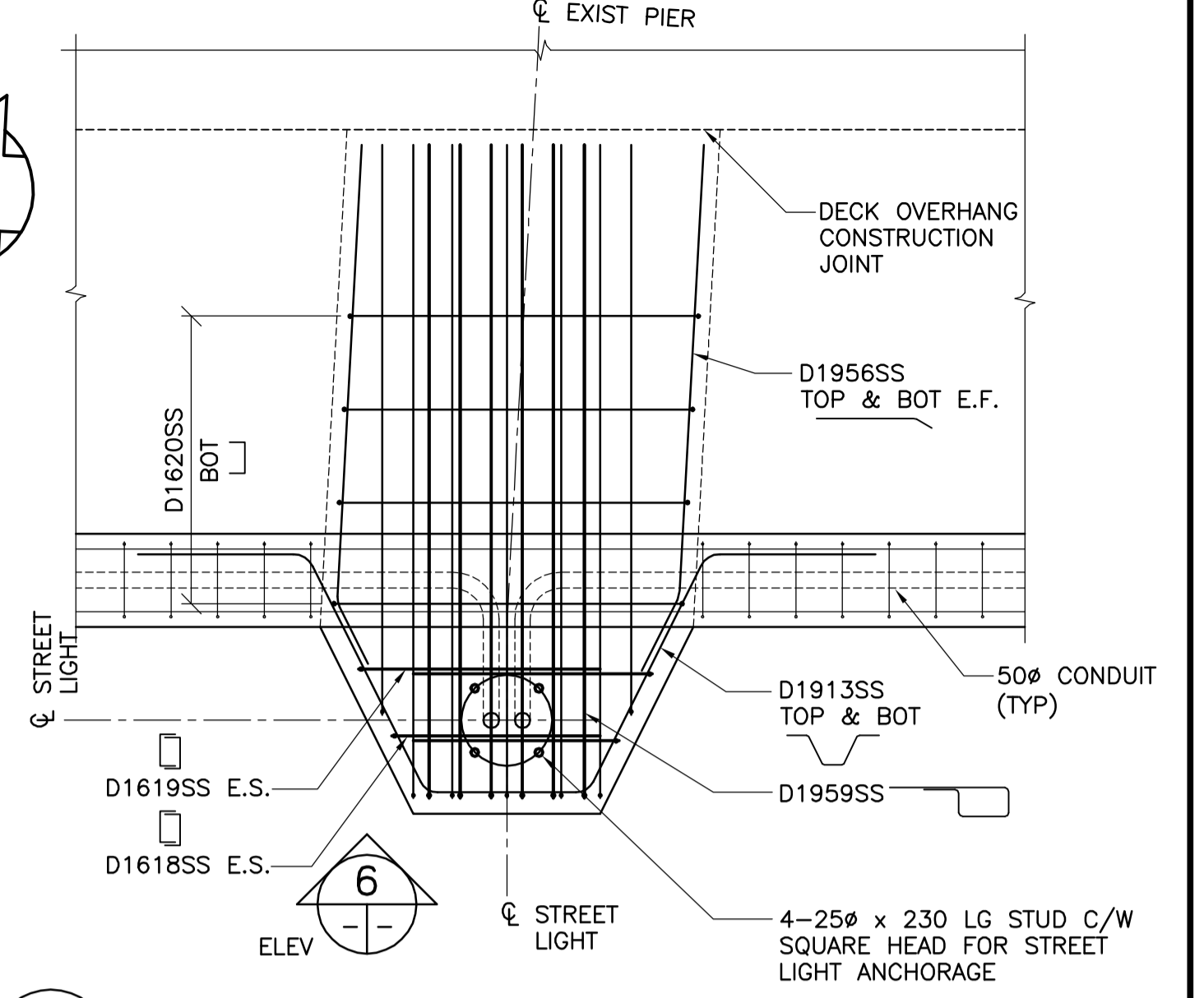
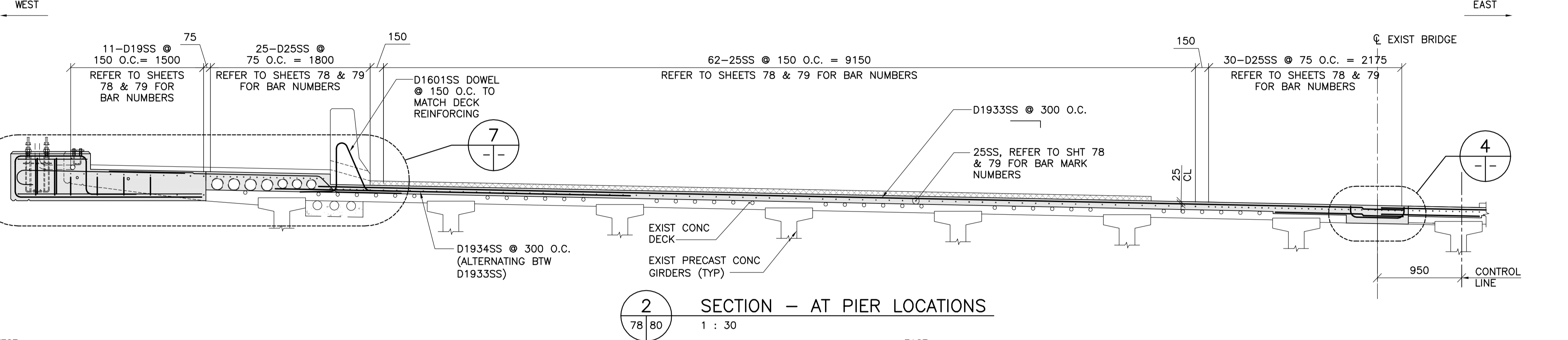


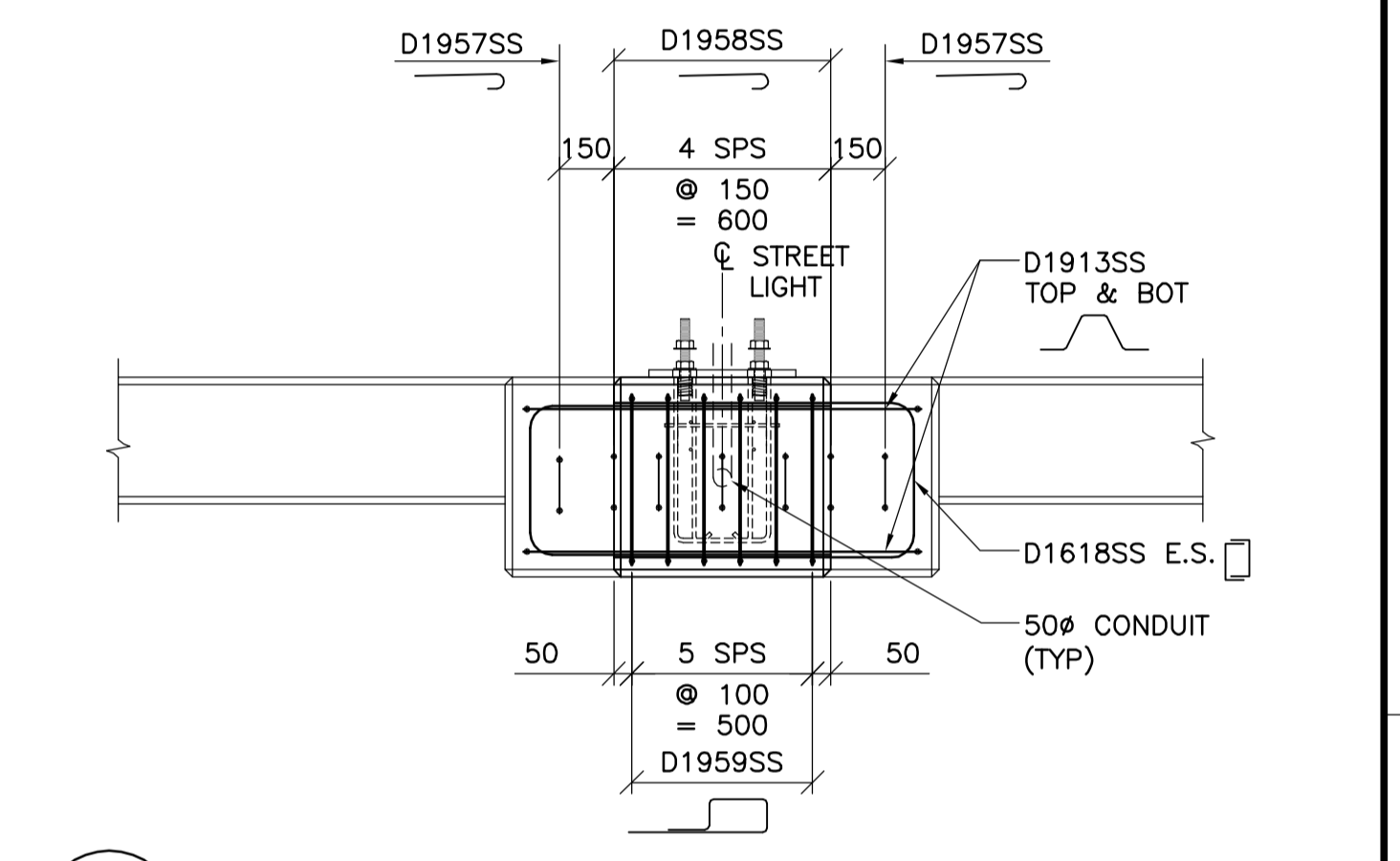
1 TYPICAL SECTION - PHASE 2 DECK REINFORCEMENT
1 : 30



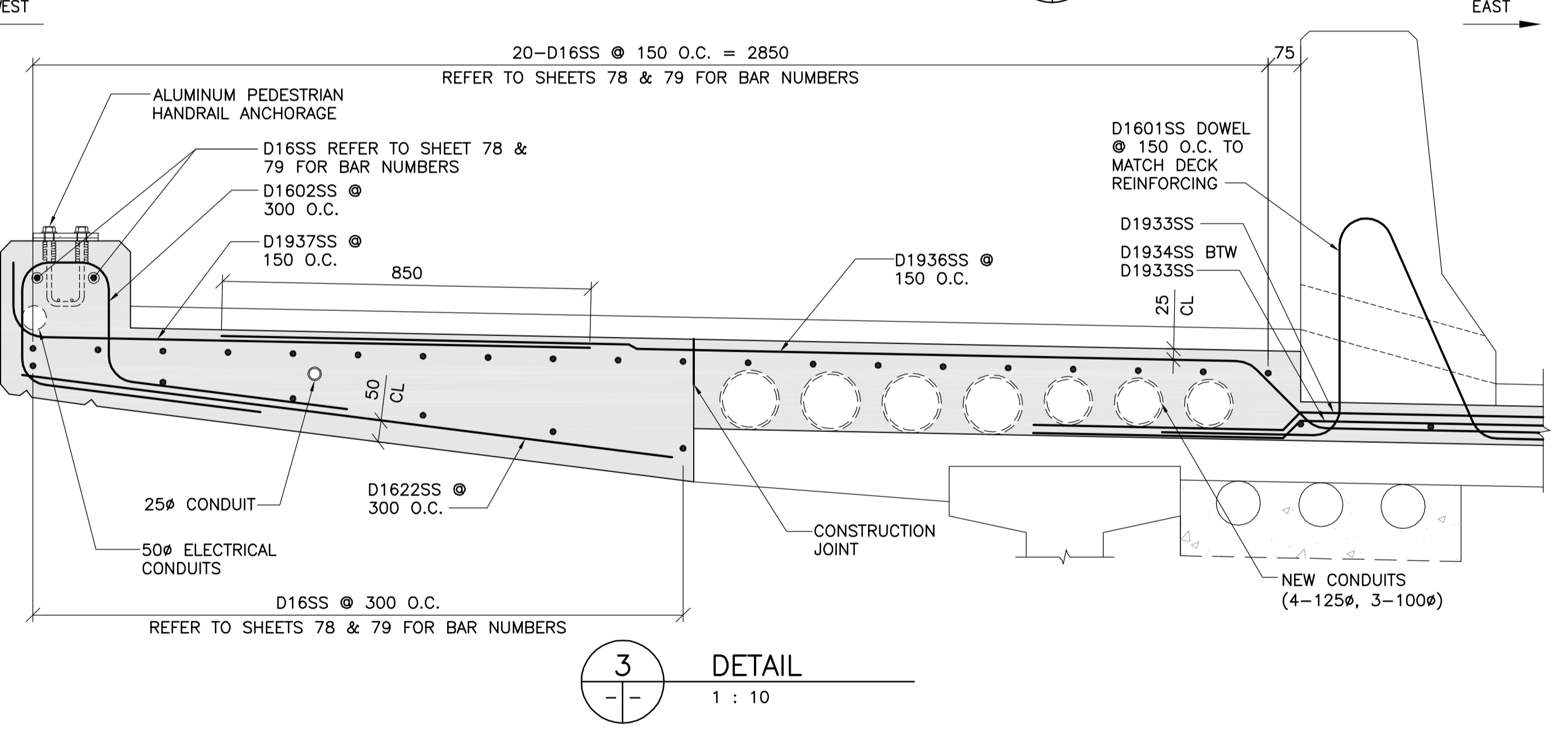
5 STREET LIGHT CONC BASE - PLAN
1 : 20
- TYPICAL DECK REINFORCEMENT NOT SHOWN FOR CLARITY



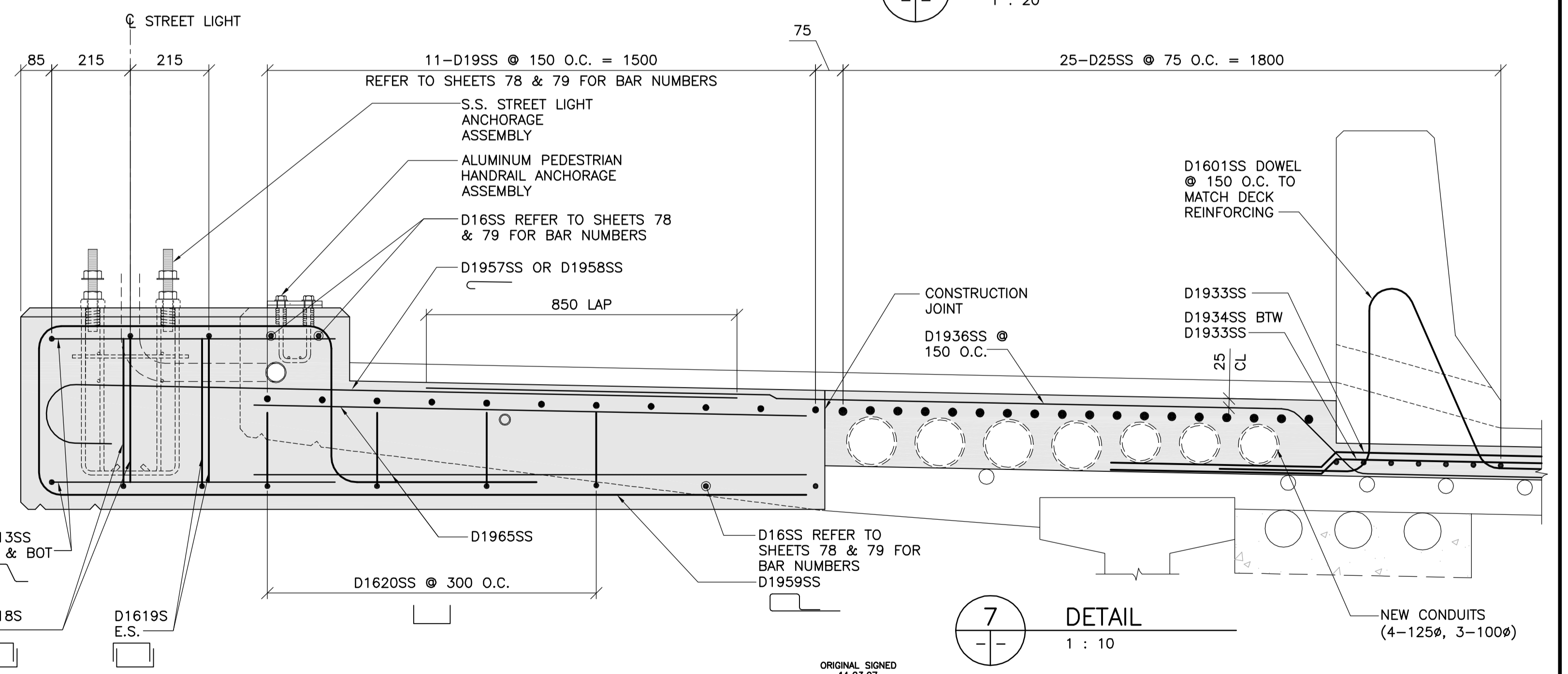
2 SECTION - AT PIER LOCATIONS
1 : 30



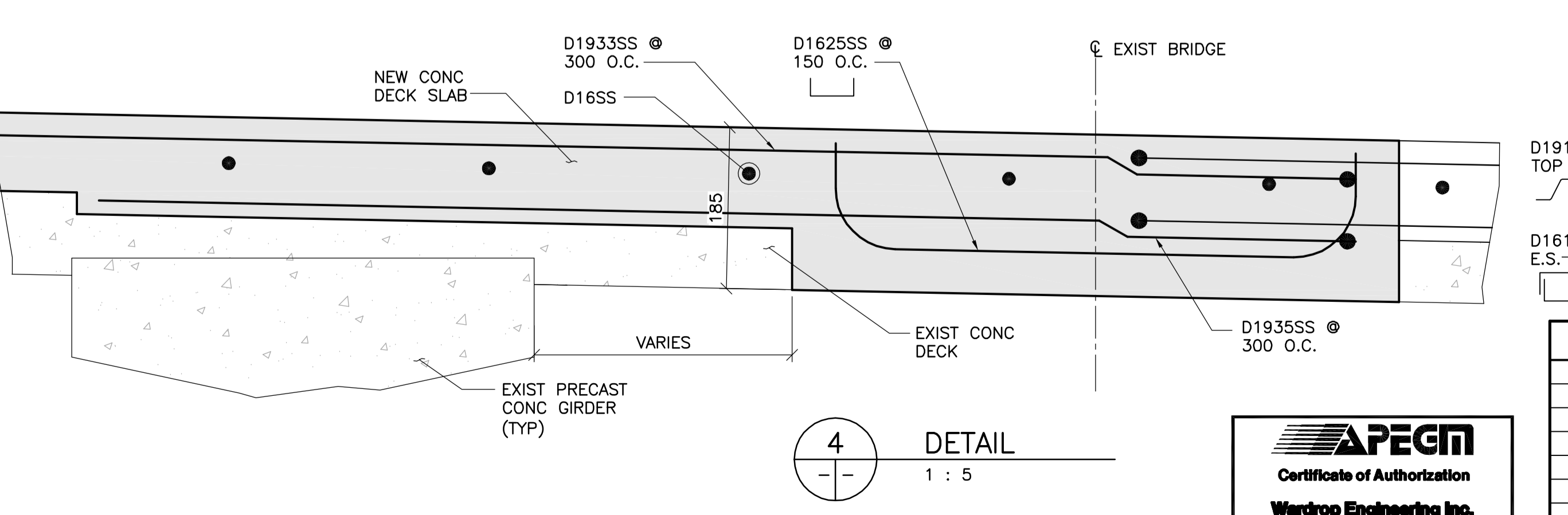
6 STREET LIGHT CONC BASE - ELEVATION
1 : 20



3 DETAIL
1 : 10



7 DETAIL
1 : 10



4 DETAIL
1 : 5

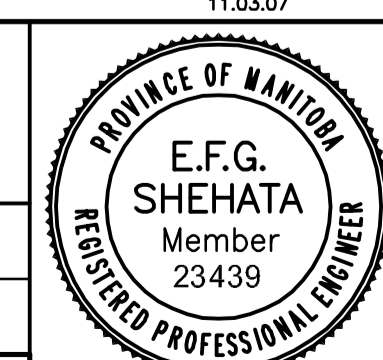


B.M. ELEV.	F.B.		
00 ISSUED FOR ADDENDUM 1	11.03.07	EFS	
NO. REVISIONS	DATE	BY	
	10.10.13		

WARDROP
ATETRA TECH COMPANY

DESIGNED BY V.B.	CHECKED BY E.F.S.
DRAWN BY B.M.	APPROVED BY R.H.W.
HOR. SCALE: AS NOTED	RELEASED FOR CONSTRUCTION DATE 11.03.07
VERTICAL: AS NOTED	ORIGINAL SIGNED 11.03.07

CONSULTANT DRAWING NO. 0900070502-DWG-S0080
MATT CHESLEY, P. ENG. BRIDGE PROJECTS ENGINEER



THE CITY OF WINNIPEG
PUBLIC WORKS DEPARTMENT
ENGINEERING DIVISION

OSBORNE STREET BRIDGE
REHABILITATION & RELATED WORKS

BRIDGE DECK -
PHASE 2 REINFORCING

CITY DRAWING NUMBER
B109-11-085
SHEET 80 OF 131

80