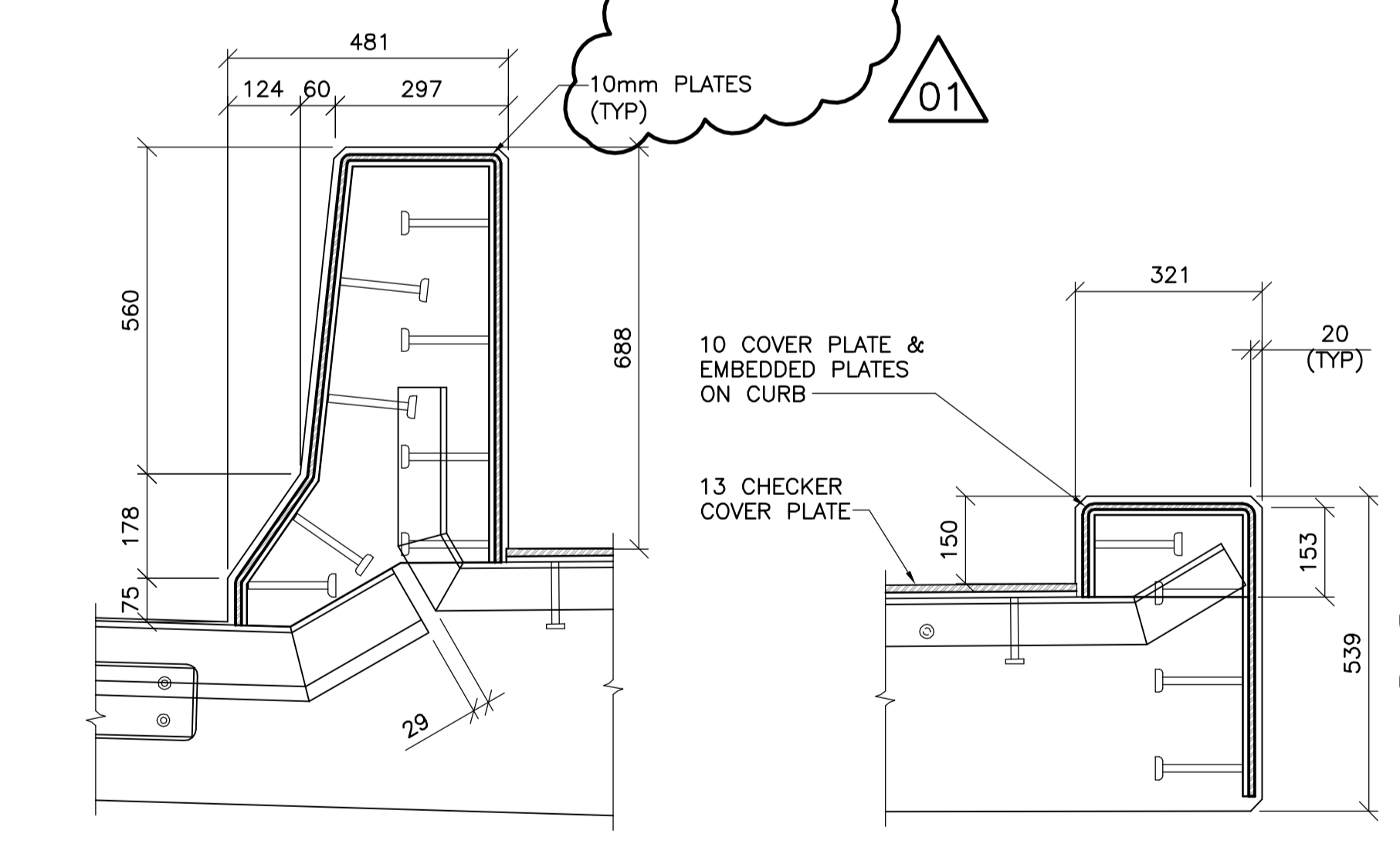
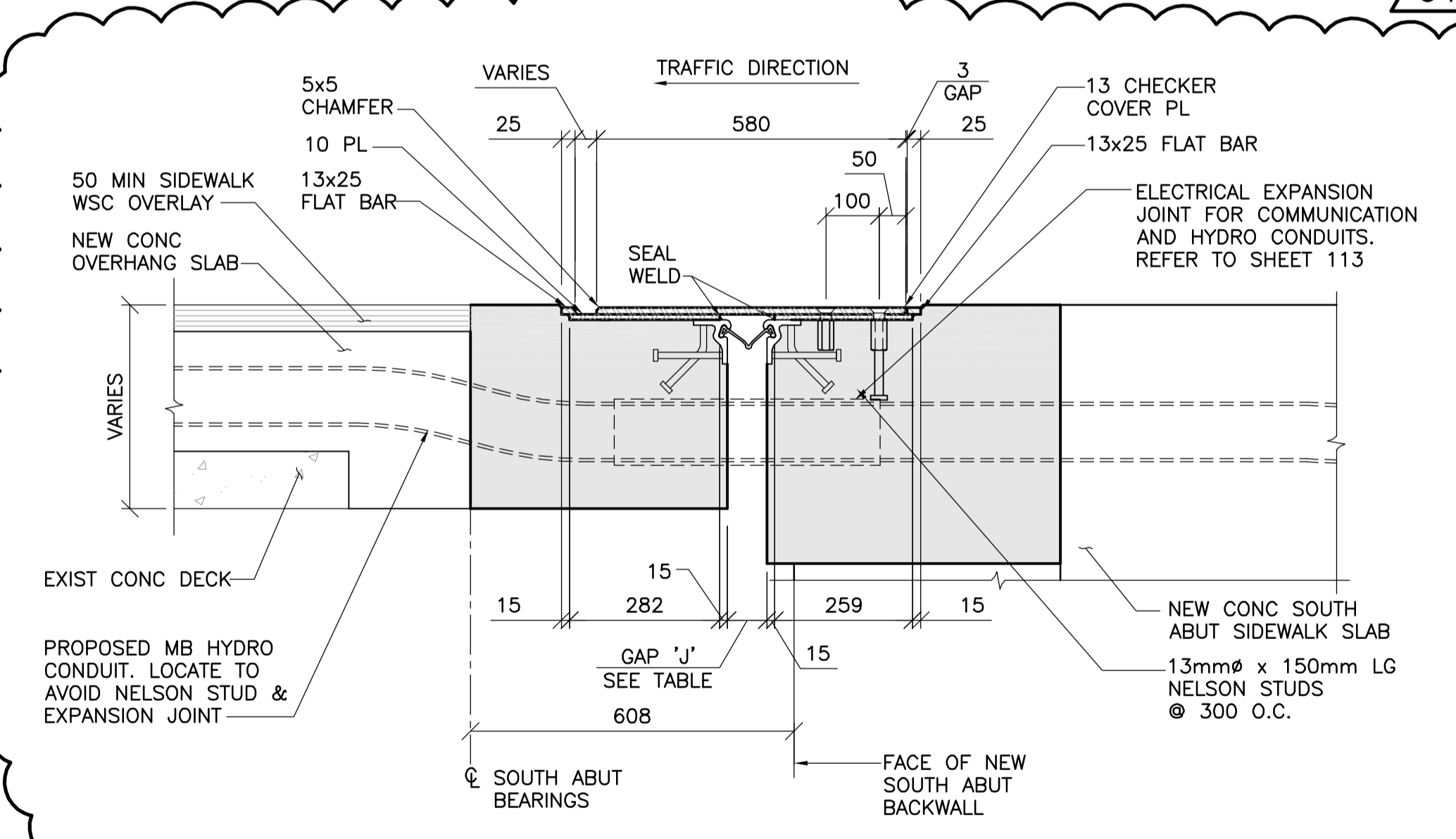


SECTION 1
1 : 10
- SHOWING WEST BARRIER, MEDIAN AND EAST BARRIER SIMILAR
- SHOWN FOR 20°C

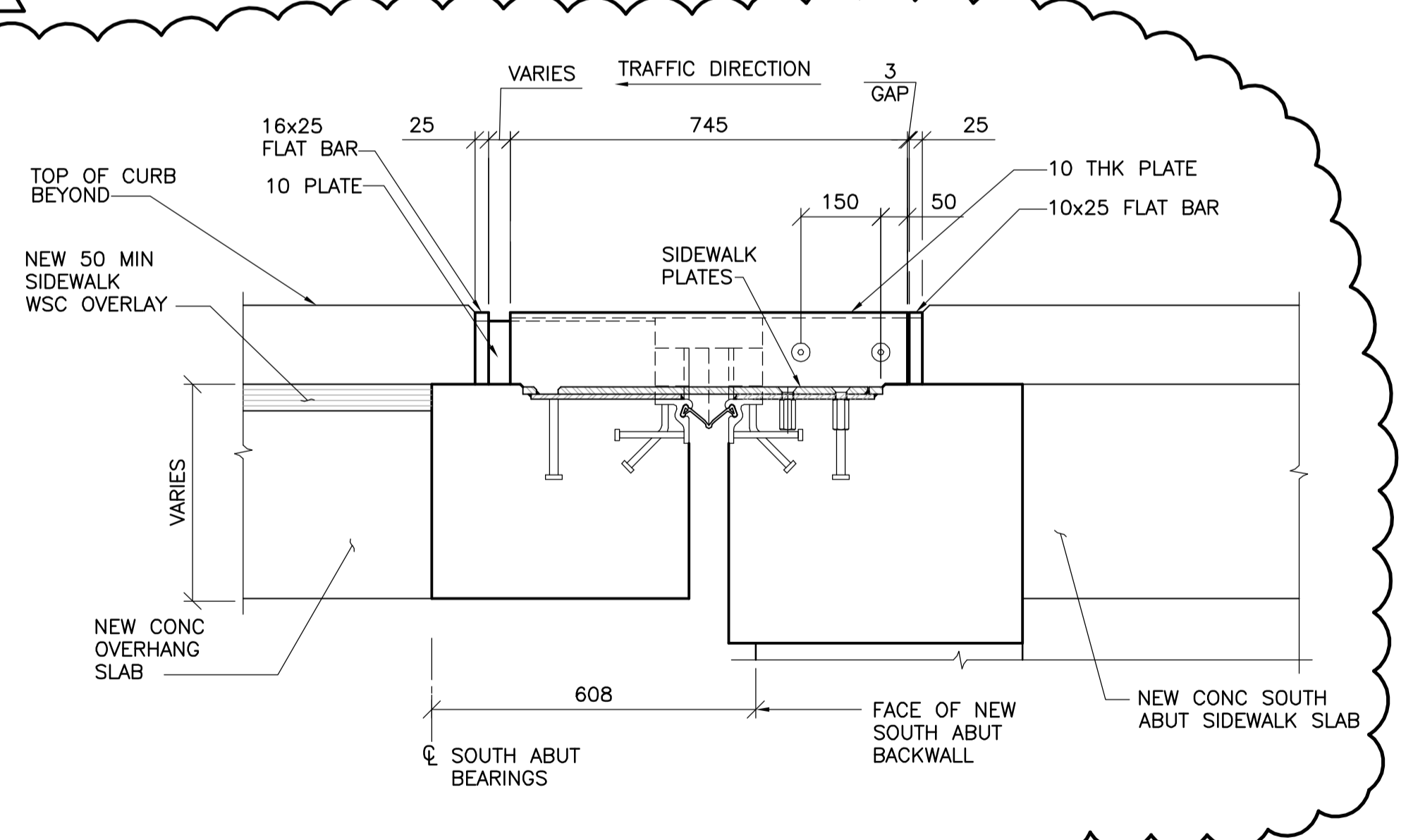


SECTION 3
1 : 10
- WABO MODULAR D600

SECTION 4
1 : 10
- SE500 STRIPSEAL



SECTION 5 AT SIDEWALK
1 : 10
- SHOWN FOR 20°C



SECTION 6 AT SIDEWALK
1 : 10
- SHOWN FOR 20°C

NOTE: REFER TO SHT 97 FOR ANCHOR TYPE 'A', EDGE BEAM AND TYPICAL EXPANSION JOINT FIELD SPLICE DETAILS



B.M. ELEV.	F.B.	DATE	BY

WARDROP
ATETRA TECH COMPANY

DESIGNED BY: K.Y.
CHECKED BY: V.B.
DRAWN BY: E.M.M.
APPROVED BY: R.H.W.

HOR. SCALE: AS NOTED
VERTICAL: AS NOTED

RELEASED FOR CONSTRUCTION ORIGINAL SIGNED DATE: 11.02.16
DATE: 10.12.03



THE CITY OF WINNIPEG
PUBLIC WORKS DEPARTMENT
ENGINEERING DIVISION

OSBORNE STREET BRIDGE
REHABILITATION & RELATED WORKS

SOUTH EXPANSION JOINT

CITY DRAWING NUMBER: B109-11-106
SHEET 101 OF 131

CONSULTANT DRAWING NO.: 0900070502-DWG-S0101

101