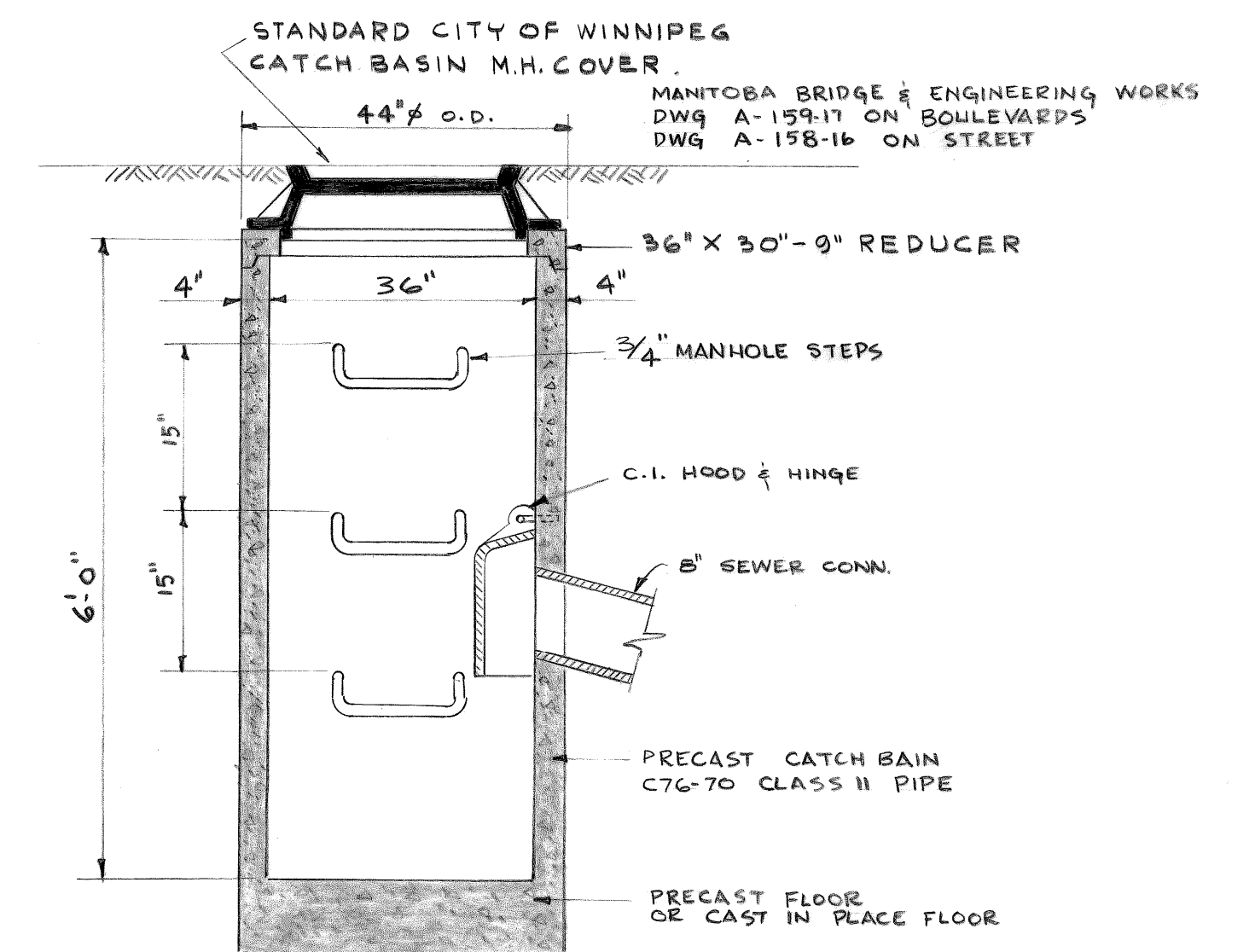
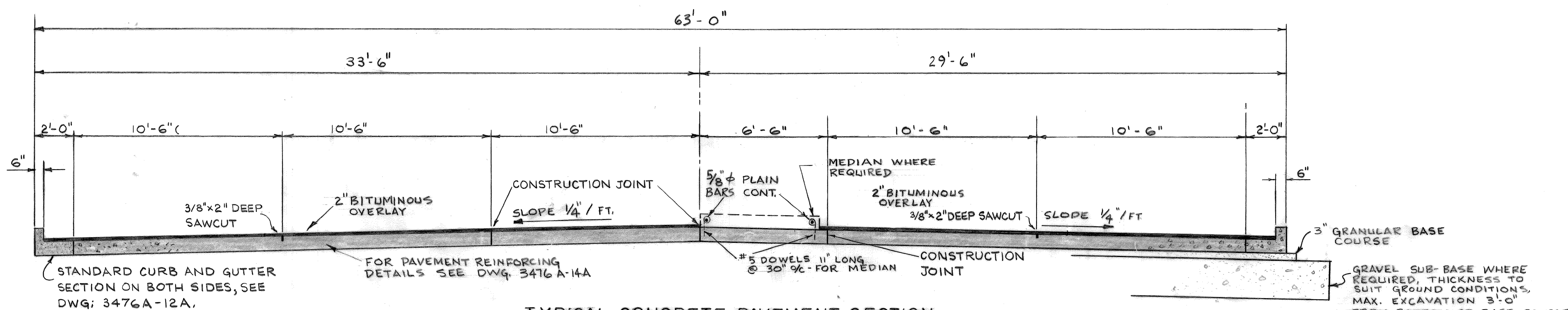


TYPICAL CONCRETE PAVEMENT SECTION
NORTH OF BRIDGE
SCALE — 1/4" = 1'-0"



CATCH BASIN DETAIL
N.T.S.



TYPICAL CONCRETE PAVEMENT SECTION
SOUTH OF BRIDGE
SCALE — 1/4" = 1'-0"

APPROVED *R. Campbell*
Samuel R. Campbell
MANAGER OF STREETS AND TRAFFIC
DATE: 2/24/76

LOCATIONS OF UNDERGROUND STRUCTURES AS SHOWN ARE BASED ON THE BEST INFORMATION AVAILABLE, BUT NO GUARANTEE IS GIVEN THAT ALL EXISTING UTILITIES ARE SHOWN OR THAT THE GIVEN LOCATIONS ARE EXACT. CONFIRMATION OF EXISTENCE AND EXACT LOCATION OF ALL SERVICES MUST BE OBTAINED FROM THE INDIVIDUAL UTILITIES BEFORE PROCEEDING WITH CONSTRUCTION.

MICROFILMED

LOCATION APPROVED
UNDERGROUND STRUCTURES
APR 29/76 *d. MacDermid*
DATE

P-1690

DETAIL SYMBOL DETAIL NUMBER REFERENCE DWG. No.					
PROVIDE OF MANITOBA G. S. LANGMAN 14/2/76 REGISTERED ENGINEER					
2	13-12-76	AS-CONSTRUCTED	HB		
1	8-3-76	GENERAL REVISION	RAC		
NO	DATE	REVISION	BY	IAPPD	
DESIGN		DATE	SCALE	DRAWING NO	
OWNED		AS	SHOWN	3476A-16A	
CKD. S.S.		FEB. 76			

Reid, Crowther & Partners Limited
CONSULTING ENGINEERS AND PLANNERS
VANCOUVER CALGARY EDMONTON REGINA WINNIPEG TORONTO

THE CITY OF WINNIPEG
WORKS AND OPERATIONS DEPARTMENT
STREETS AND TRANSPORTATION DIVISION
OSBORNE ST. PAVEMENT RECONSTRUCTION

CONSTRUCTION DETAILS, SHEET 5