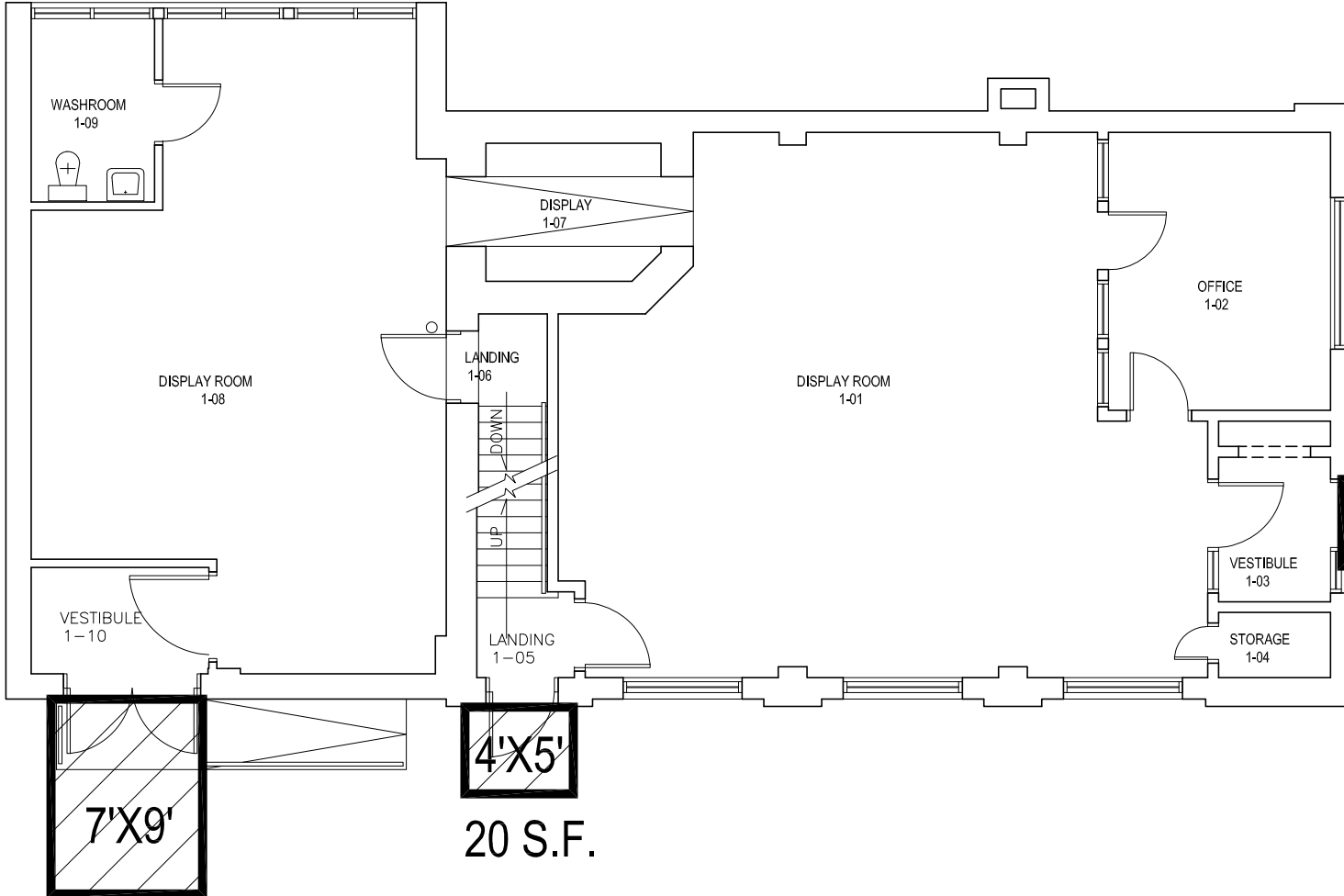
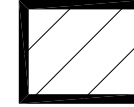




NOTES :

TOTAL AREA OF SNOW TO BE REMOVED = 123 SQ .FT.




FLOOR PLAN UPDATED AUG. 11/94

NO.	REVISION/DESCRIPTION	BY	DATE
SEALS			

**4'X10'** 40 S.F.

DRAWN BY TC	CHECKED BY	APPROVED
DATE 2010.08.24	USER APPROVAL	


 THE CITY OF WINNIPEG  
 PLANNING, PROPERTY AND  
 DEVELOPMENT DEPARTMENT  
 3-65 GARRY STREET  
 R3C 4K4

PROJECT  
 141 REGENT AVE.  
 TRANSCONA MUSEUM

SHEET TITLE  
 SNOW REMOVAL

0141RG01

SCALE NOT TO SCALE	PROJECT NO. 817-2011	SHEET NO. A-2
-----------------------	-------------------------	------------------

**7'X9'**  
63 S.F.

**4'X5'**  
20 S.F.

MAIN FLOOR PLAN