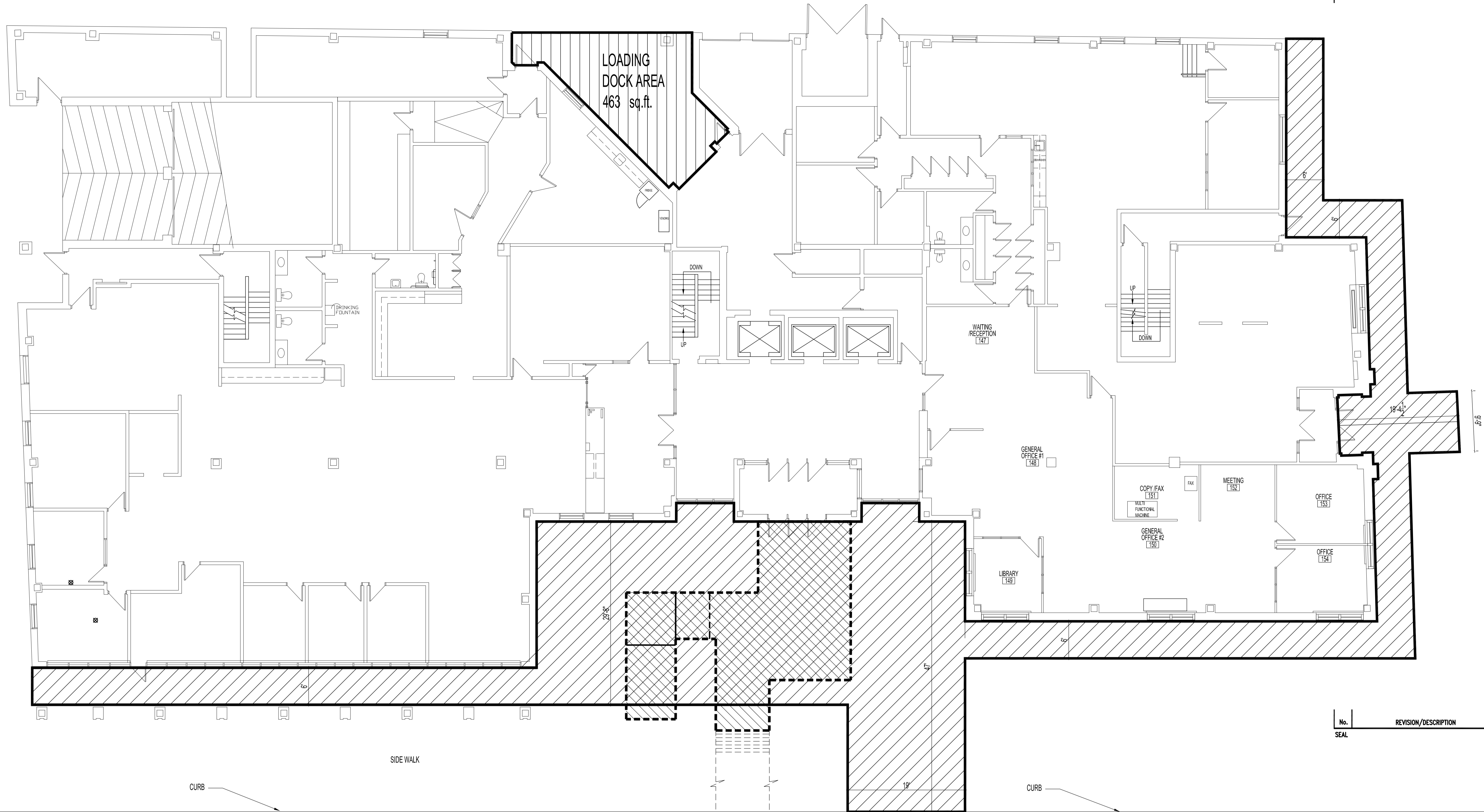


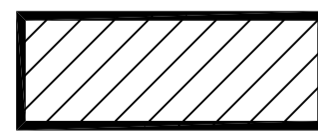
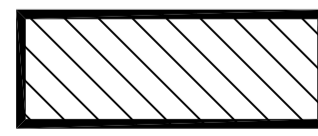
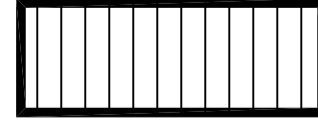
NOTES:



185 KING STREET -MAIN FLOOR PLAN  
SCALE: 1/8"=1'-0"

KING STREET

KING STREET

STREET LEVEL SNOW REMOVAL ( SIDEWALK )	=	4,139 sq. ft.	
SNOW REMOVAL AREAS ( STAIRS / LANDING)	=	766 sq. ft.	
SNOW REMOVAL AREA ( LOADING DOCK )	=	463 sq. ft.	
TOTAL SNOW REMOVAL AREA	=	5,368 sq. ft.	

No.	REVISION/DESCRIPTION	BY	DATE
SEAL			

DRAWN	TO	CHECKED	DESIGNED	APPROVED
DATE	2010.12.14	USER		

THE CITY OF WINNIPEG  
PLANNING, PROPERTY AND  
DEVELOPMENT DEPARTMENT  
MUNICIPAL ACCOMMODATIONS DIVISION  
3-65 GARRY STREET, R3C 4K4

PROJECT  
MANDARIN BUILDING

185 KING STREET  
SHEET TITLE  
SNOW REMOVAL  
SITE PLAN

SCALE	PROJECT No:	SHEET No:
AS SHOWN	817-2011	A1