

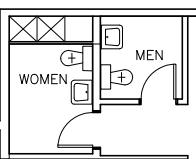
NOTES :

AREA 2 (380 SQ. FT)

AREA 1 (41 SQ. FT)

9' x 4'-6"

24' x 3'



LIBRARY AREA

50' x 8' +/-

46' x 3' +/-

LIBRARY AREA

VESTIBULE

VESTIBUL

8'x 5'

LIBRARY AREA


AREA 3 (398 SQ. FT)

26' x 5'

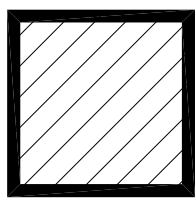
NO.	REVISION/DESCRIPTION	BY	DATE
SEALS			

5014 ROBLIN BLVD.
 CHARLESWOOD LIBRARY
 MAIN FLOOR PLAN

DRAWN BY	CHECKED BY	APPROVED
DATE 2011.10.03	USER APPROVAL	

 THE CITY OF WINNIPEG
 PLANNING, PROPERTY AND
 DEVELOPMENT DEPARTMENT
 3-65 GARRY STREET
 R3C 4K4

PROJECT
**5014 ROBLIN
 CHARLESWOOD LIBRARY**

 AREA OF
 SNOW REMOVAL
 819 SQ. FT.

SHEET TITLE
 SITE PLAN: SNOW REMOVAL

5014RBSP
 SCALE: NOT TO SCALE
 PROJECT NO.: 817-2011
 SHEET NO.: A-2