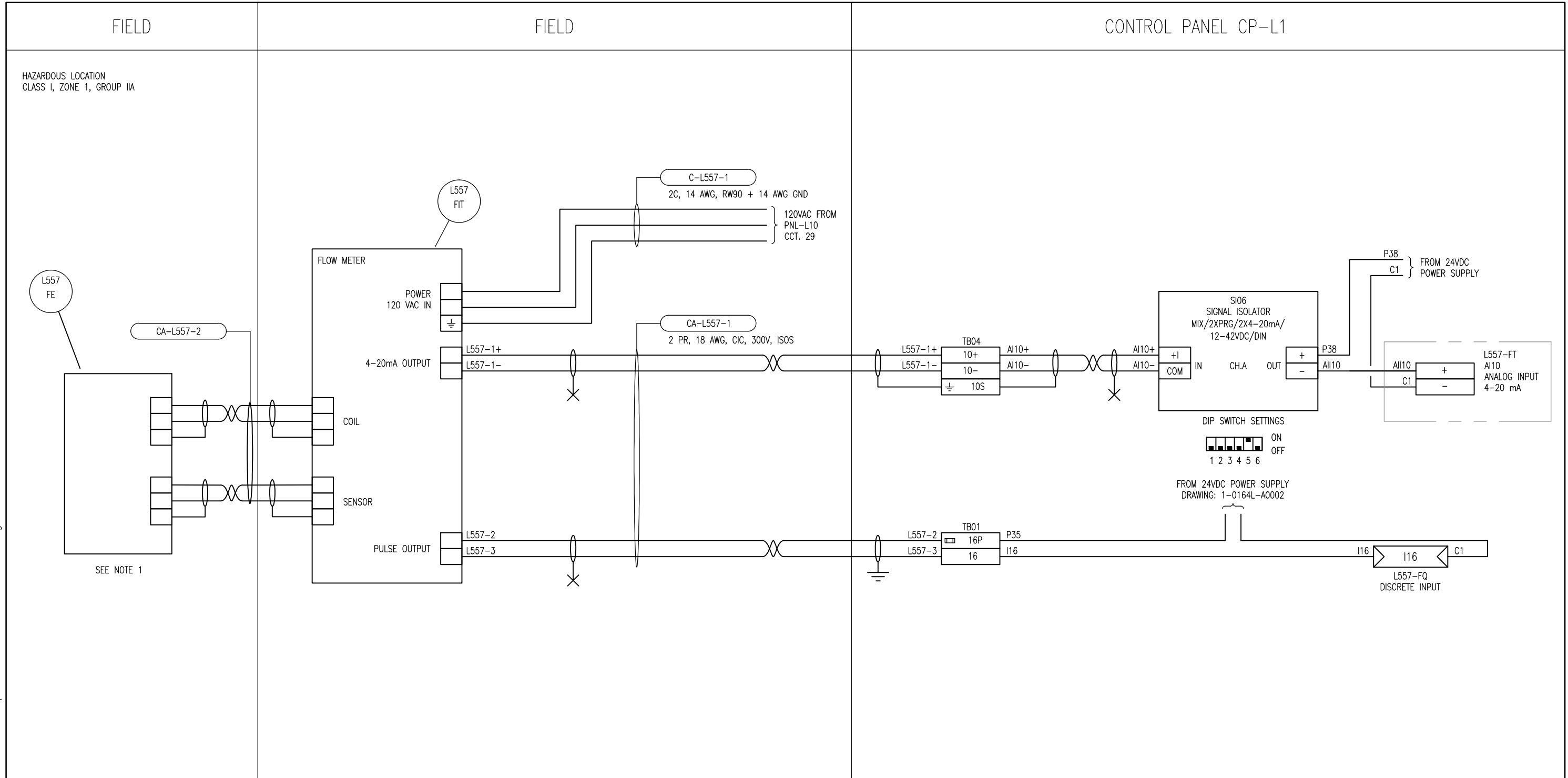


B SIZE - 279mm x 432mm

LAST SAVE: 2012/02/24 - 7:29am
 PATH: M:\508042\4ENG\48&C\DD - General DWG\1-0164L-A0034-001-00.dwg



NOTES

1. CABLE TO SENSOR L557-FE IS TO FULLY MEET MANUFACTURER SPECIFICATIONS AND BE ROUTED IN A DEDICATED RIGID ALUMINUM CONDUIT.

SEE NOTE 1



SNC-LAVALIN INC.
 148 Nature Park Way
 Winnipeg, MB, Canada R3P 0X7
 204-786-8080

ENGINEER'S SEAL

ORIGINAL DRAWING
 SEALED BY:
 C. J. REIMER
 SNC-LAVALIN
 MEMBER #21968
 2012/02/23
 REV. 00

THE CITY OF WINNIPEG
 WATER AND WASTE DEPARTMENT

MONTCALM WASTEWATER PUMPING STATION
 2011 UPGRADES
 LOOP DIAGRAM
 SOUTH FORCEMAIN FLOW METER
 L557-FIT

CITY DRAWING NUMBER	SHEET	REV.	SIZE
1-0164L-A0034	001	00	B

DESIGNED BY:	B. CLEVEN	CHECKED BY:	C. REIMER
DRAWN BY:	S. FUNK	APPROVED BY:	C. REIMER
SCALE:	NTS	DATE:	2011/08/31
RELEASED FOR CONSTRUCTION BY:	K. R. ZUREK	DATE:	2012/02/23
CONSULTANT NO.:	508042-0000-48DD-0034		
NO.	ISSUED FOR TENDER, BID OPP. 907-2011	DATE	DESIGN CHECK
00		2011/11/04	BC CJR