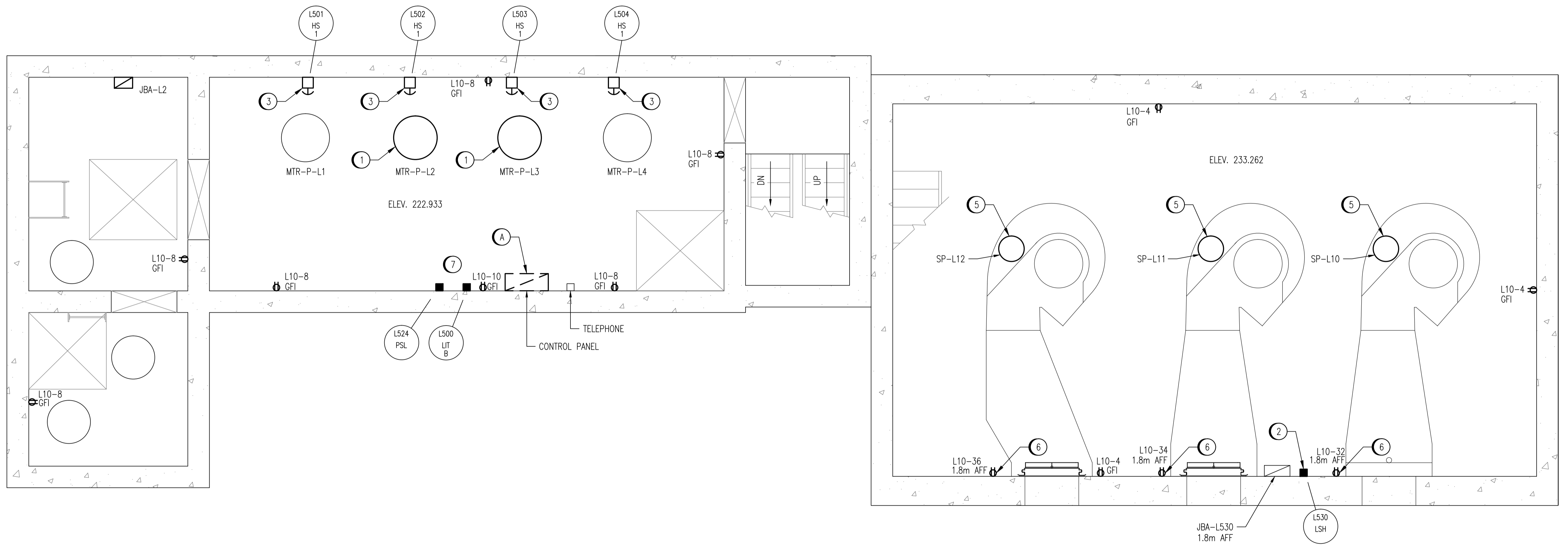


DEMOLITION NOTES:

- (A) AFTER THE NEW CONTROL SYSTEM IS OPERATIONAL, DEMOLISH EXISTING CONTROL PANEL INCLUDING CABLING AND CONDUIT. TURN OVER THE CONTROL PANEL TO THE CITY.
- (B) PROVIDE DEMOLITION OF EXISTING RECEPTACLES INCLUDING CABLING, CONDUIT, JUNCTION BOXES AND SUPPORTS. REMOVE CABLING AND CONDUIT BACK TO SOURCE PANEL.

CONSTRUCTION NOTES:

- (1) INSTALL NEW 100 HP WASTEWATER LIFT PUMP MOTORS.
- (2) REPLACE AND REWIRE THE FLYGT BALL FLOOD SWITCH INCLUDING ALL CONDUIT AND WIRING.
- (3) INSTALL NEW E-STOP SWITCH.
- (4) INSTALL NEW GFI RECEPTACLES.
- (5) INSTALL NEW SUMP PUMPS IN THE COMMUNOTOR PITS. ROUTE AND FASTEN CORD ALONG INSIDE WALL OF THE COMMUNOTOR CHANNELS.
- (6) MOUNT SUMP PUMP RECEPTACLES AT 1.8m AFF. CLIP CORDS TO WALL.
- (7) MAINTAIN EXISTING BUBBLER BASED LEVEL TRANSMITTER. AFTER THE NEW CONTROL SYSTEM IS OPERATIONAL, WIRE TO THE NEW CONTROL SYSTEM.



MOTOR AND COMMUNOTOR ROOM PLAN
SCALE: 1 : 30

LAST SAVE: 2012/02/23 - 2:07pm
PATH: M:\508042\AENG\47ELE\DD - General DWG\1-0164L-E0006-001-00.dwg

1-0164L-E0016	ELECTRICAL SCHEDULES
DRAWING NUMBER	REFERENCE DRAWINGS



APECM
Certificate of Authorization
SNC-Lavalin Inc.
No. 4489

NO.	REVISIONS	DATE	DESIGN	CHECK
00	ISSUED FOR TENDER, BID OPP. 907-2011	2011/11/04	VE	CJR

SNC-LAVALIN INC.
148 Nature Park Way
Winnipeg, MB, Canada R3P 0X7
204-796-8080

DESIGNED BY: V. ELIMBAN
DRAWN BY: M.J. PERSSON
SCALE: 1:30
DATE: 2011/09/22
CONSULTANT NO.: 508042-0000-47DD-0006

CHECKED BY: C. REIMER
APPROVED BY: C. REIMER
RELEASED FOR CONSTRUCTION BY: K. R. ZUREK
DATE: 2012/02/23

ENGINEER'S SEAL
ORIGINAL DRAWING
SEALED BY:
C. J. REIMER
SNC-LAVALIN
MEMBER #21968
2011/11/07
REV. 00

THE CITY OF WINNIPEG
WATER AND WASTE DEPARTMENT

MONTCALM WASTEWATER PUMPING STATION
2011 UPGRADES
ELECTRICAL EQUIPMENT PLAN
MOTOR AND COMMUNOTOR ROOMS

CITY DRAWING NUMBER
1-0164L-E0006

SHEET
001

REV.
00

SIZE
A1