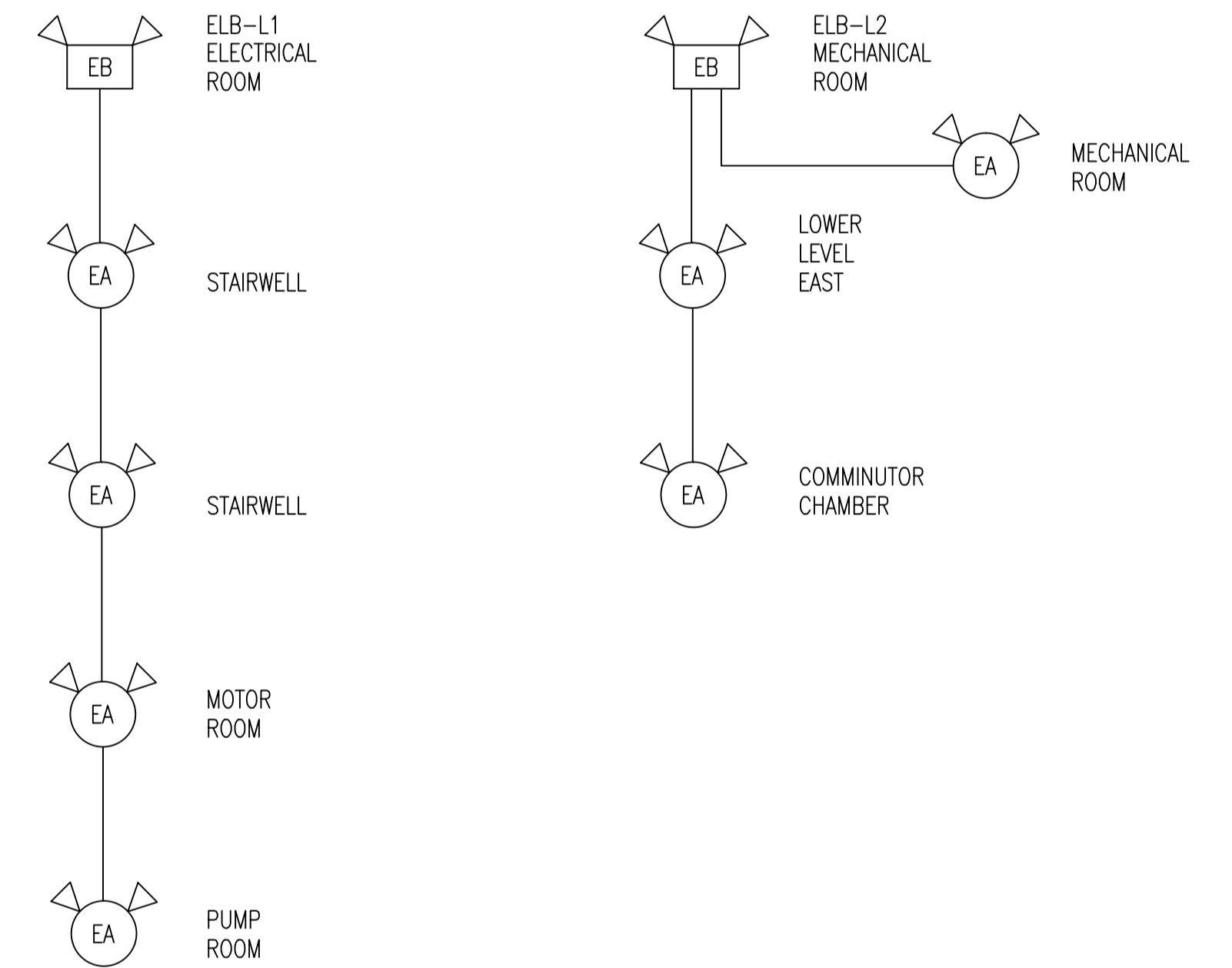
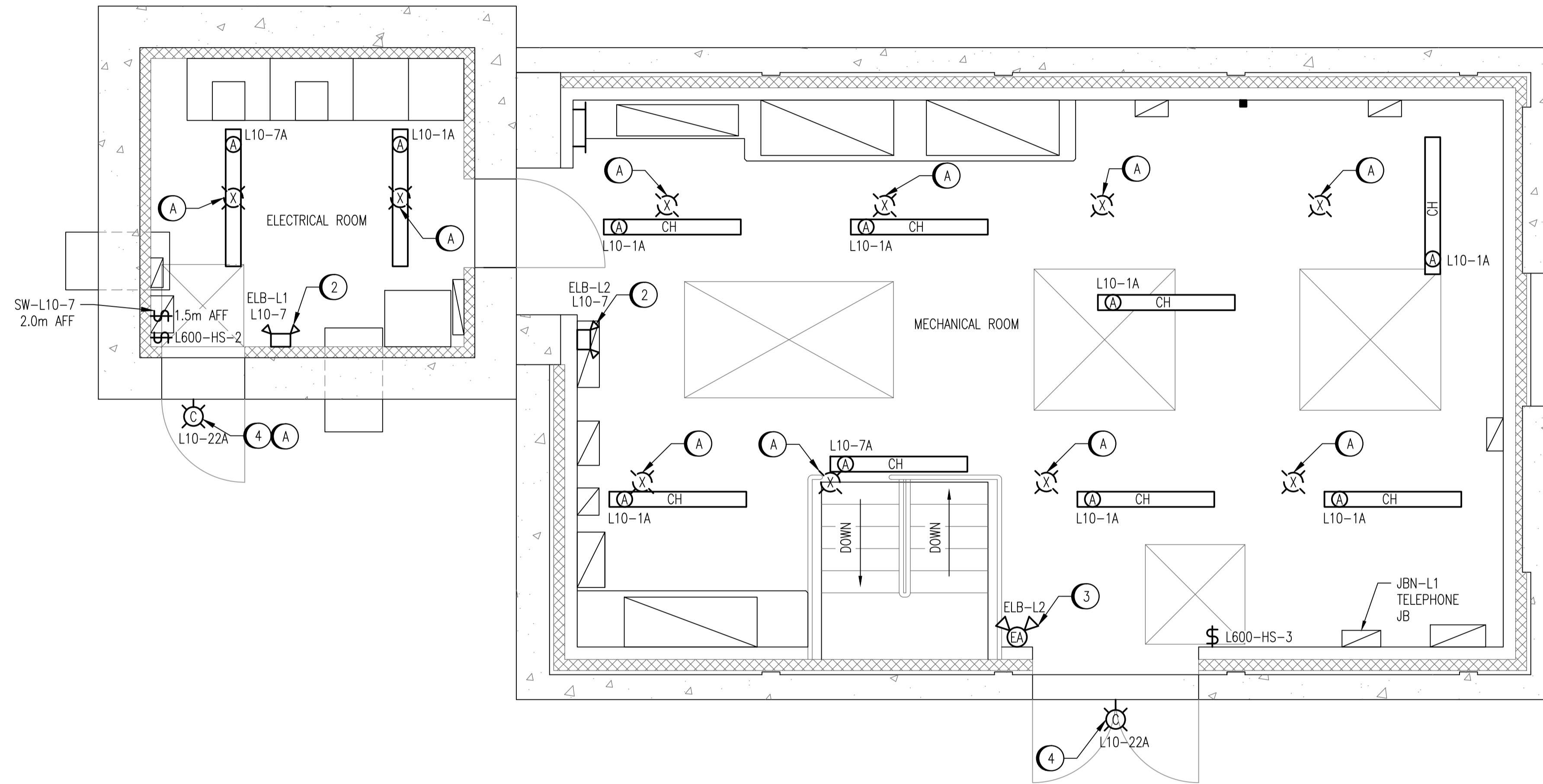


DEMOLITION NOTES:

- (A) PROVIDE DEMOLITION OF ALL EXISTING LIGHT FIXTURES, INCLUDING CABLING, CONDUIT, JUNCTION BOXES, SUPPORTS, AND CONTROLS. REMOVE CABLING BACK TO SOURCE PANEL.

INSTALLATION NOTES:

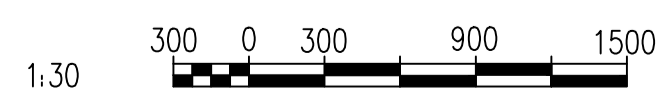
- (1) INSTALL NEW 2x32W FLUORESCENT LUMINAIRES.
- (2) INSTALL NEW EMERGENCY LIGHTING BATTERY UNIT WITH THE BOTTOM OF ENCLOSURE NOT LESS THAN 2.0m ABOVE FINISHED FLOOR.
- (3) INSTALL NEW EMERGENCY LIGHTING REMOTE FIXTURES WITH THE BOTTOM OF THE ENCLOSURE NOT LESS THAN 2.0m ABOVE FINISHED FLOOR.
- (4) INSTALL NEW 70W HPS OUTDOOR LIGHT.



LIGHTING PLAN - MAIN FLOOR - ELEV. 230.900
SCALE: 1 : 30

EMERGENCY LIGHTING RISER DIAGRAM
SCALE: NTS

1-0164L-E0016	ELECTRICAL SCHEDULES
DRAWING NUMBER	REFERENCE DRAWINGS



NO.	REVISIONS	DATE	DESIGN	CHECK
00	ISSUED FOR TENDER, BID OPP: 907-2011	2012/02/22	VE	CJR

DESIGNED BY:	V. ELIMBAN
CHECKED BY:	C. REIMER
DRAWN BY:	S. FUNK
APPROVED BY:	C. REIMER
SCALE:	NTS
RELEASED FOR CONSTRUCTION BY:	K. R. ZUREK
DATE:	2011/09/21
DATE:	2012/02/23
CONSULTANT NO.:	508042-0000-47DD-0009

ENGINEER'S SEAL
ORIGINAL DRAWING
SEALED BY:
C. J. REIMER
SNC-LAVALIN
MEMBER #21968
2012/02/23
REV. 00

THE CITY OF WINNIPEG WATER AND WASTE DEPARTMENT			
MONTCALM WASTEWATER PUMPING STATION 2011 UPGRADES LIGHTING PLAN MAIN FLOOR			
CITY DRAWING NUMBER	SHEET	REV.	SIZE
1-0164L-E0009	001	00	A1