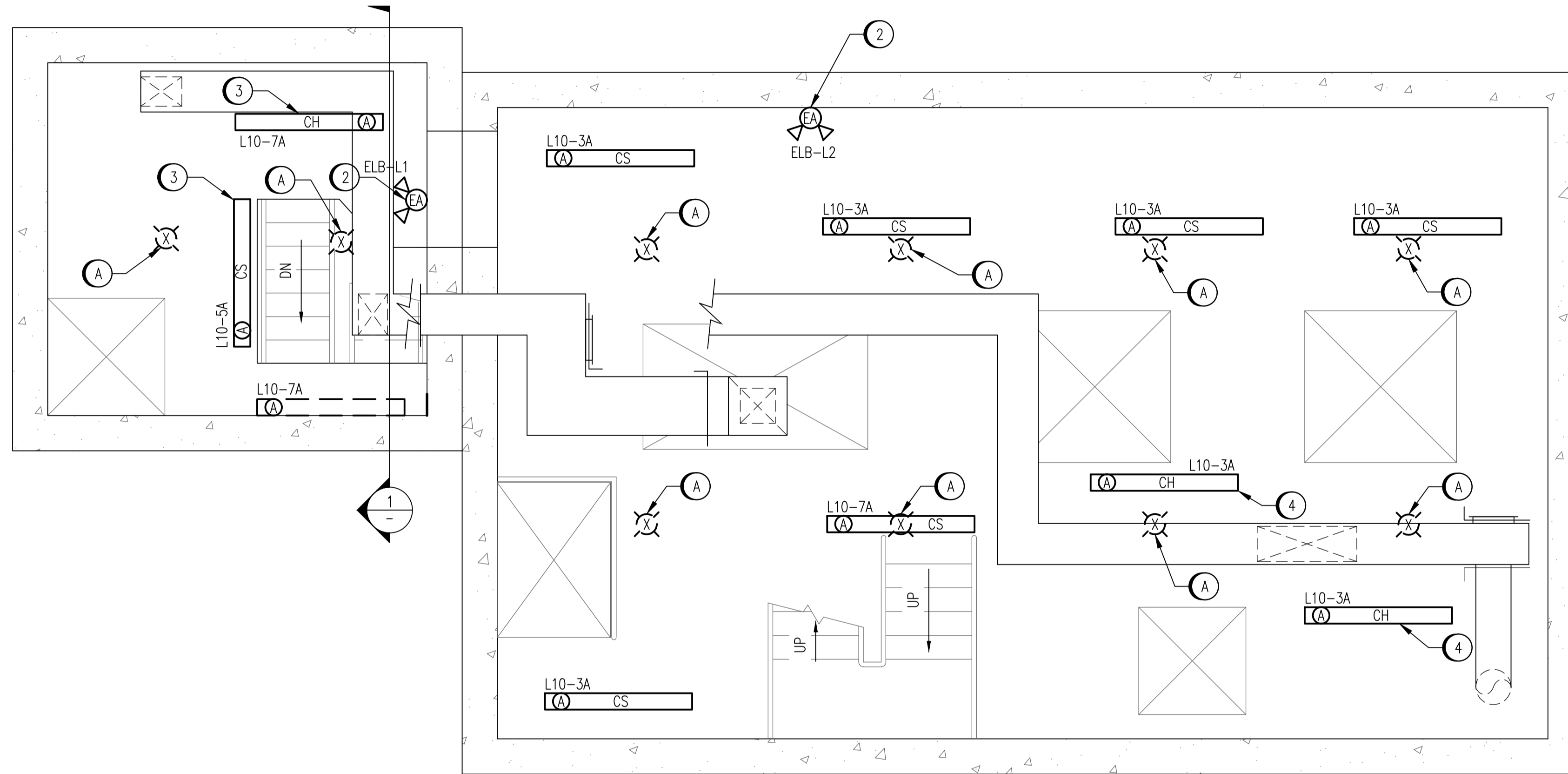


DEMOLITION NOTES:

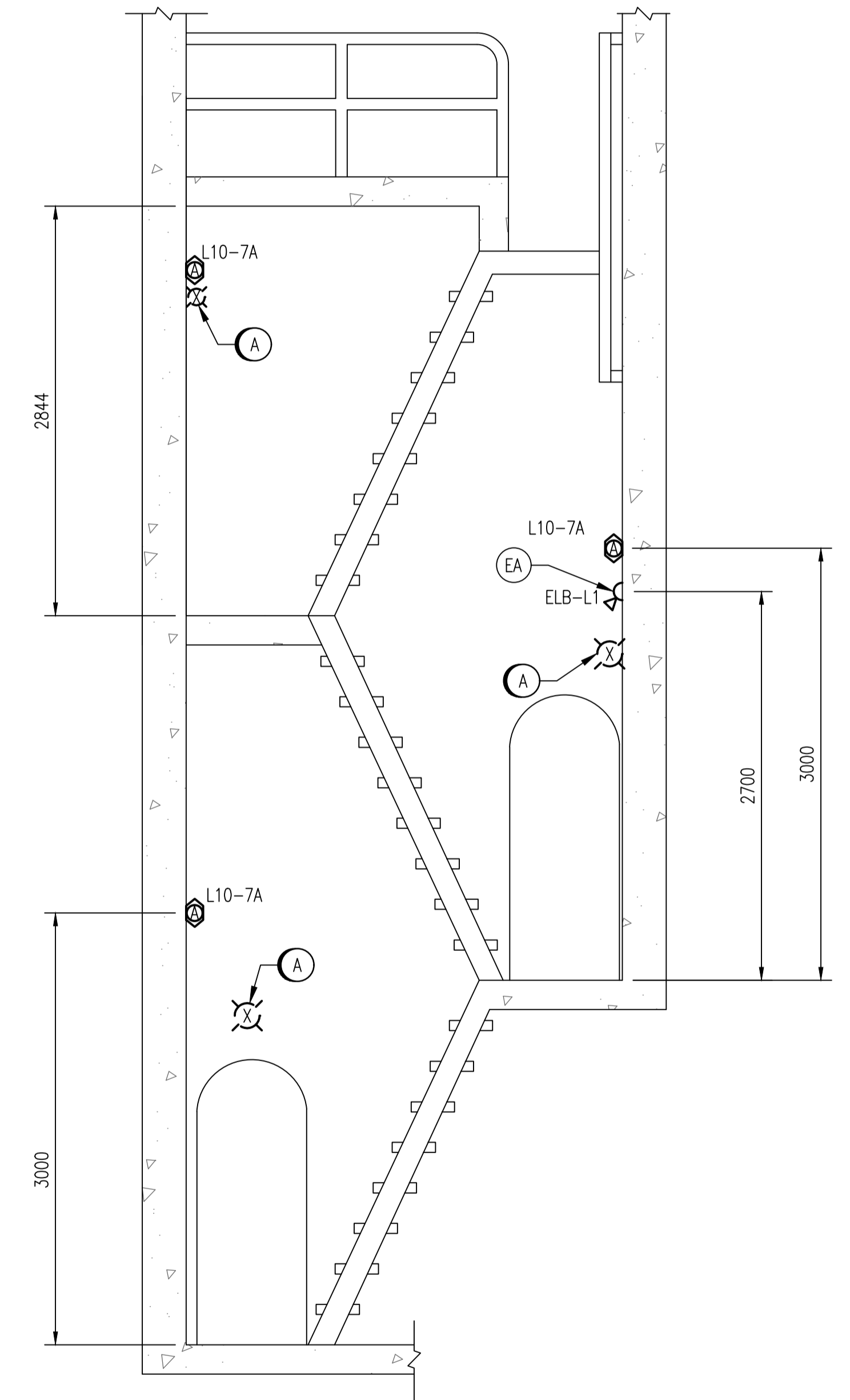
- (A) PROVIDE DEMOLITION OF EXISTING LIGHTING FIXTURES, INCLUDING CABLING, CONDUIT, JUNCTION BOXES, SUPPORTS, AND CONTROLS. REMOVE CABLING BACK TO SOURCE PANEL.

INSTALLATION NOTES:

- 1 INSTALL NEW 2x32W FLUORESCENT LUMINAIRES.
- 2 INSTALL NEW EMERGENCY LIGHTING REMOTE FIXTURE WITH THE BOTTOM OF THE ENCLOSURE NOT LESS THAN 2.0m ABOVE FINISHED FLOOR.
- 3 COORDINATE LOCATION OF STAIRWELL FIXTURES WITH HVAC DUCTING. REVIEW THE PROPOSED LOCATION WITH THE CONTRACT ADMINISTRATOR AND RELOCATE AS REQUIRED.
- 4 MOUNT FIXTURES INDICATED FLUSH WITH THE BOTTOM OF THE DUCT.

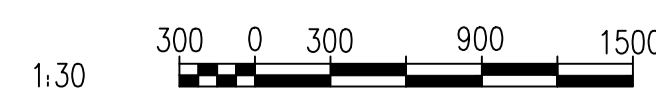


**LIGHTING PLAN - LOWER LEVEL 1 - ELEV. 227.834**  
SCALE: 1 : 30



**1**  
SECTION  
SCALE: 1 : 30  
E0011  
E0012

1-0164L-E0016	ELECTRICAL SCHEDULES
DRAWING NUMBER	REFERENCE DRAWINGS



NO.	REVISIONS	DATE	DESIGN	CHECK
00	ISSUED FOR TENDER, BID OPP: 907-2011	2012/02/22	VE	CJR

DESIGNED BY: V. ELIMBAN	CHECKED BY: C. REIMER
DRAWN BY: S. FUNK	APPROVED BY: C. REIMER
SCALE: 1:30	RELEASED FOR CONSTRUCTION BY: K. R. ZUREK
DATE: 2011/09/21	DATE: 2012/02/23
CONSULTANT NO.: 508042-0000-47DD-0010	

ENGINEER'S SEAL
ORIGINAL DRAWING SEALED BY: C. J. REIMER SNC-LAVALIN MEMBER #21968 2012/02/23 REV. 00

THE CITY OF WINNIPEG WATER AND WASTE DEPARTMENT			
MONTCALM WASTEWATER PUMPING STATION 2011 UPGRADES LIGHTING PLAN LOWER LEVEL 1			
CITY DRAWING NUMBER	SHEET	REV.	SIZE
1-0164L-E0010	001	00	A1