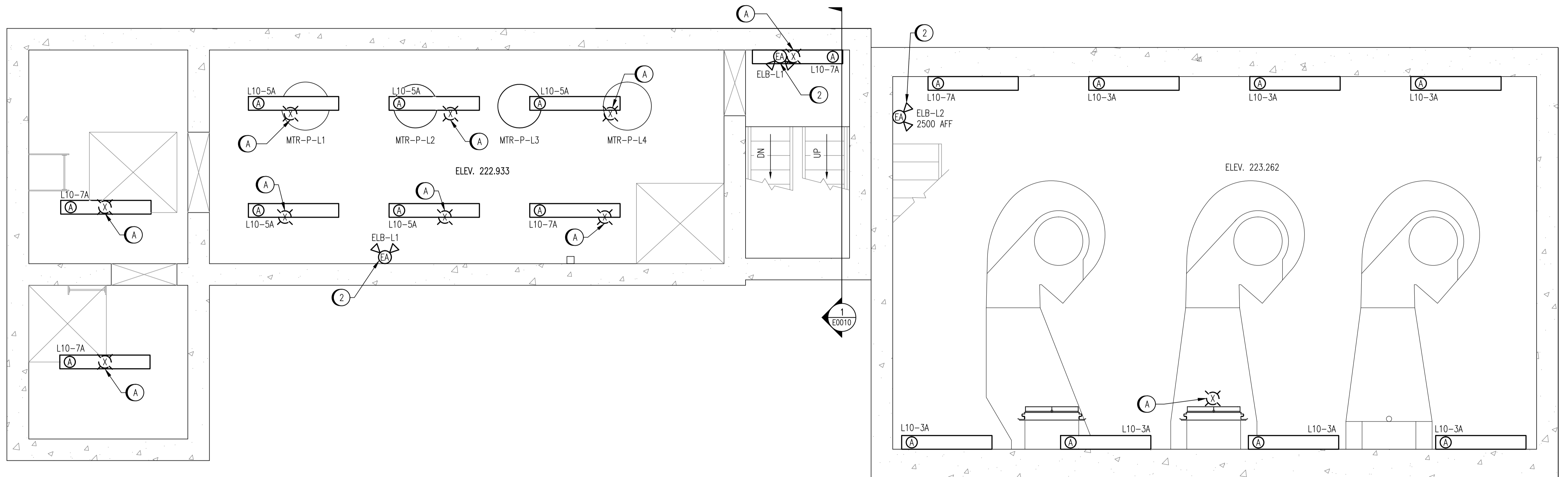


DEMOLITION NOTES:

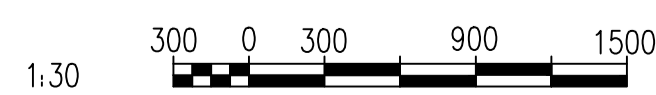
- (A) PROVIDE DEMOLITION OF ALL EXISTING LIGHTING FIXTURES, INCLUDING CABLING CONDUIT, JUNCTION BOXES, SUPPORTS AND CONTROLS. REMOVE CABLING BACK TO SOURCE PANEL.

INSTALLATION NOTES:

- 1 INSTALL NEW 2x32W FLUORESCENT LUMINAIRES AS SHOWN.
- 2 INSTALL NEW EMERGENCY LIGHTING REMOTE FIXTURE WITH THE BOTTOM OF THE ENCLOSURE NOT LESS THAN 2.0m ABOVE FINISHED FLOOR.
- 3 WALL MOUNT FIXTURES 2700 AFF IN THE COMMUNOTOR CHAMBER.



LIGHTING PLAN - MOTOR AND COMMUNOTOR ROOM
SCALE: 1 : 30



LAST SAVE: 2012/02/23 - 2:29pm
PATH: M:\508042\AENG\47ELE\DD - General DWG\1-0164L-E0011-001-00.dwg

1-0164L-E0016	ELECTRICAL SCHEDULES
DRAWING NUMBER	REFERENCE DRAWINGS

APECM
Certificate of Authorization
SNC-Lavalin Inc.
No. 4489

NO.	REVISIONS	DATE	DESIGN	CHECK
00	ISSUED FOR TENDER, BID OPP. 907-2011	2011/11/04	VE	CJR

SNC-LAVALIN INC.
148 Nature Park Way
Winnipeg, MB, Canada R3P 0X7
204-786-8080

DESIGNED BY: V. ELIMBAN
DRAWN BY: M.J. PERSSON
SCALE: 1:30
DATE: 2011/09/22

CHECKED BY: C. REIMER
APPROVED BY: C. REIMER
RELEASED FOR CONSTRUCTION BY: K. R. ZUREK
DATE: 2012/02/23

CONSULTANT NO.: 508042-0000-47DD-0011

ENGINEER'S SEAL

ORIGINAL DRAWING
SEALED BY:
C. J. REIMER
SNC-LAVALIN
MEMBER #21968
2012/02/23
REV. 00

THE CITY OF WINNIPEG
WATER AND WASTE DEPARTMENT

MONTCALM WASTEWATER PUMPING STATION
2011 UPGRADES
LIGHTING PLAN
MOTOR AND COMMUNOTOR ROOMS

CITY DRAWING NUMBER: 1-0164L-E0011

SHEET	REV.	SIZE
001	00	A1