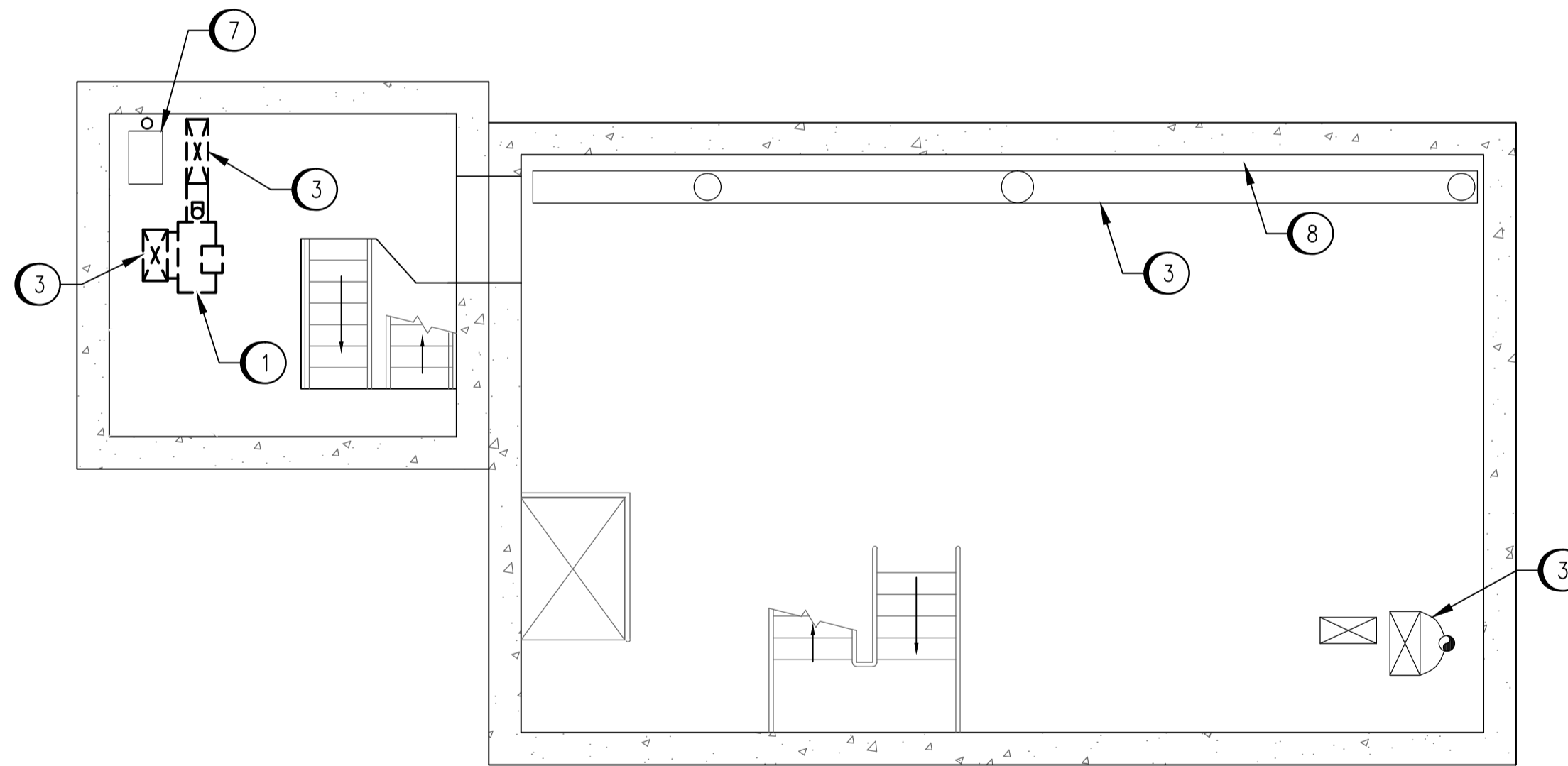


MAIN FLOOR PLAN - ELEV. 230.900
SCALE: 1 : 50

DEMOLITION NOTES:

- ① REMOVE EXISTING SUPPLY FAN, ASSOCIATED ELECTRICAL AND CONTROLS.
- ② REMOVE EXISTING WALL LOUVRE.
- ③ REMOVE EXISTING DUCTWORK.
- ④ REMOVE EXISTING DAMPER, ASSOCIATED ELECTRICAL AND CONTROLS.
- ⑤ EXISTING EXHAUST FAN TO REMAIN.
- ⑥ REMOVE EXISTING SUPPLY STACK AND GUY WIRES.
- ⑦ REMOVE EXISTING GRILLE.
- ⑧ REMOVE EXISTING WATER METER AND BACKFLOW PREVENTER.



LOWER LEVEL PLAN - ELEV. 227.859
SCALE: 1 : 50

---	---
DRAWING NUMBER	REFERENCE DRAWINGS



NO.	REVISIONS	DATE	DESIGN	CHECK
00	ISSUED FOR TENDER, BID OPP: 907-2011	2012/02/23	SN	MM

SNC-LAVALIN INC. 148 Nature Park Way Winnipeg, MB, Canada R3P 0X7 204-798-8080	
DESIGNED BY: S. NORSWORTHY	CHECKED BY: M. MCKENZIE
DRAWN BY: M.J. PERSSON	APPROVED BY: C. REIMER
SCALE: 1:50	RELEASED FOR CONSTRUCTION BY: K. R. ZUREK DATE: 2012/02/23
DATE: 2011/10/03	DATE: 2012/02/23
CONSULTANT NO.: 508042-0000-4500-0001	

ENGINEER'S SEAL
 ORIGINAL DRAWING
 SEALED BY:
 S. S. NORSWORTHY
 SNC-LAVALIN
 MEMBER #20725
 2012/02/23
 REV. 00

THE CITY OF WINNIPEG WATER AND WASTE DEPARTMENT			
MONTCALM WASTEWATER PUMPING STATION 2011 UPGRADES HVAC DEMOLITION PLAN MAIN FLOOR AND LOWER LEVEL			
CITY DRAWING NUMBER	SHEET	REV.	SIZE
1-0164L-M0001	001	00	A1