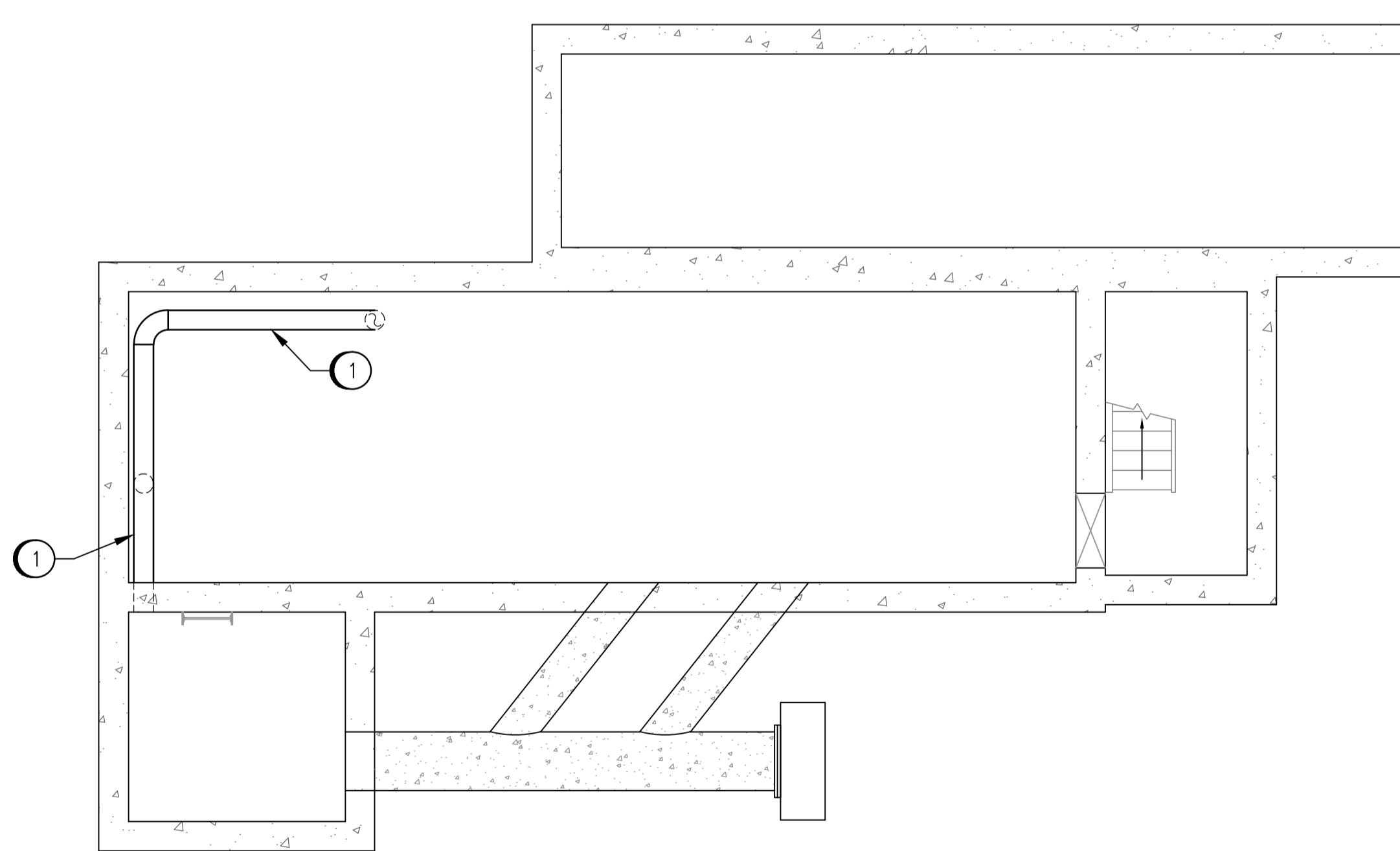


MOTOR AND COMMUNOTOR ROOM PLAN - ELEV. 223.262 & 222.933
SCALE: 1 : 50

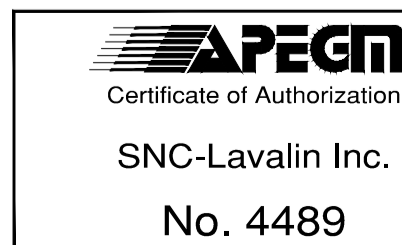


PUMP ROOM PLAN - ELEV. 220.443
SCALE: 1 : 50

DEMOLITION NOTES:

- ① REMOVE EXISTING DUCTWORK INCLUDING ASSOCIATED HANGERS & DAMPERS.

DRAWING NUMBER	REFERENCE DRAWINGS
----------------	--------------------



NO.	REVISIONS	DATE	DESIGN	CHECK
00	ISSUED FOR TENDER, BID OPP. 907-2011	2012/02/23	SN	MM

SNC-LAVALIN		SNC-LAVALIN INC. 148 Nature Park Way Winnipeg, MB, Canada R3P 0X7 204-798-8080	
DESIGNED BY: S. NORSWORTHY	CHECKED BY: M. MCKENZIE	DATE: 2011/10/03	RELEASED FOR CONSTRUCTION BY: K. R. ZUREK DATE: 2012/02/23
DRAWN BY: M.J. PERSSON		APPROVED BY: C. REIMER	
CONSULTANT NO.: 508042-0000-4500-0002			

ENGINEER'S SEAL
ORIGINAL DRAWING
SEALED BY:
S. S. NORSWORTHY
SNC-LAVALIN
MEMBER #20725
2012/02/23
REV. 00

THE CITY OF WINNIPEG
WATER AND WASTE DEPARTMENT

MONTCALM WASTEWATER PUMPING STATION
2011 UPGRADES
HVAC DEMOLITION PLAN
MOTOR, COMMUNOTOR ROOMS AND PUMP ROOMS

CITY DRAWING NUMBER	SHEET	REV.	SIZE
1-0164L-M0002	001	00	A1