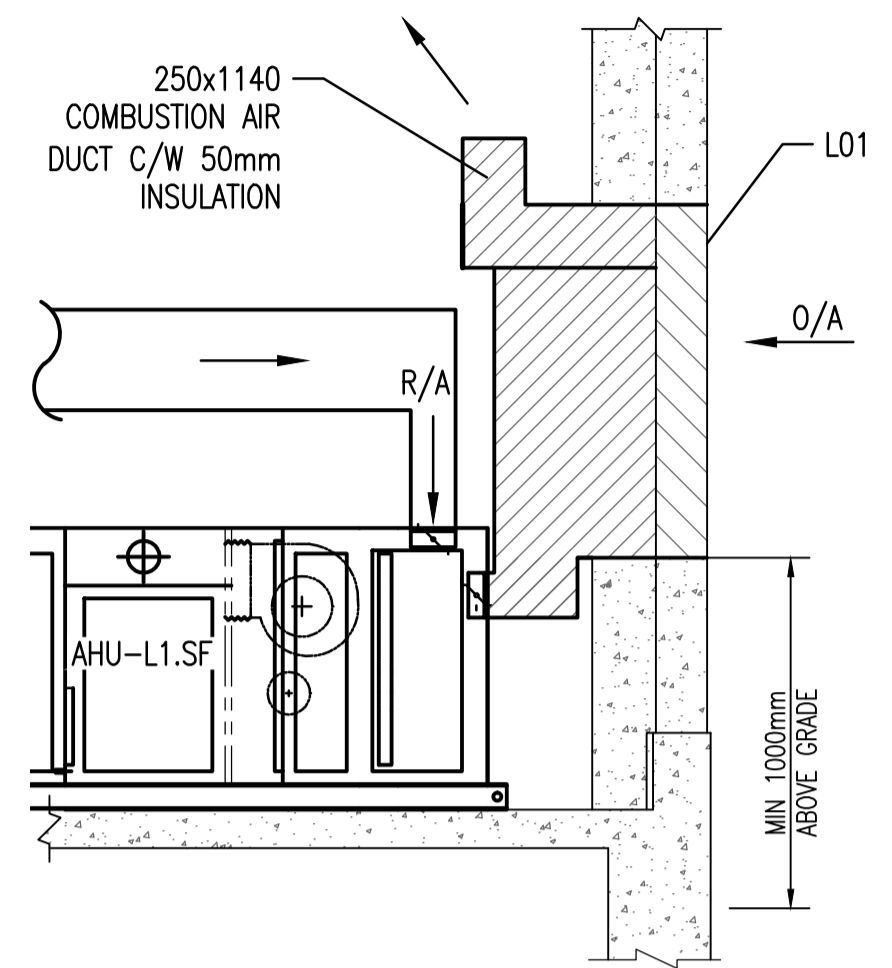
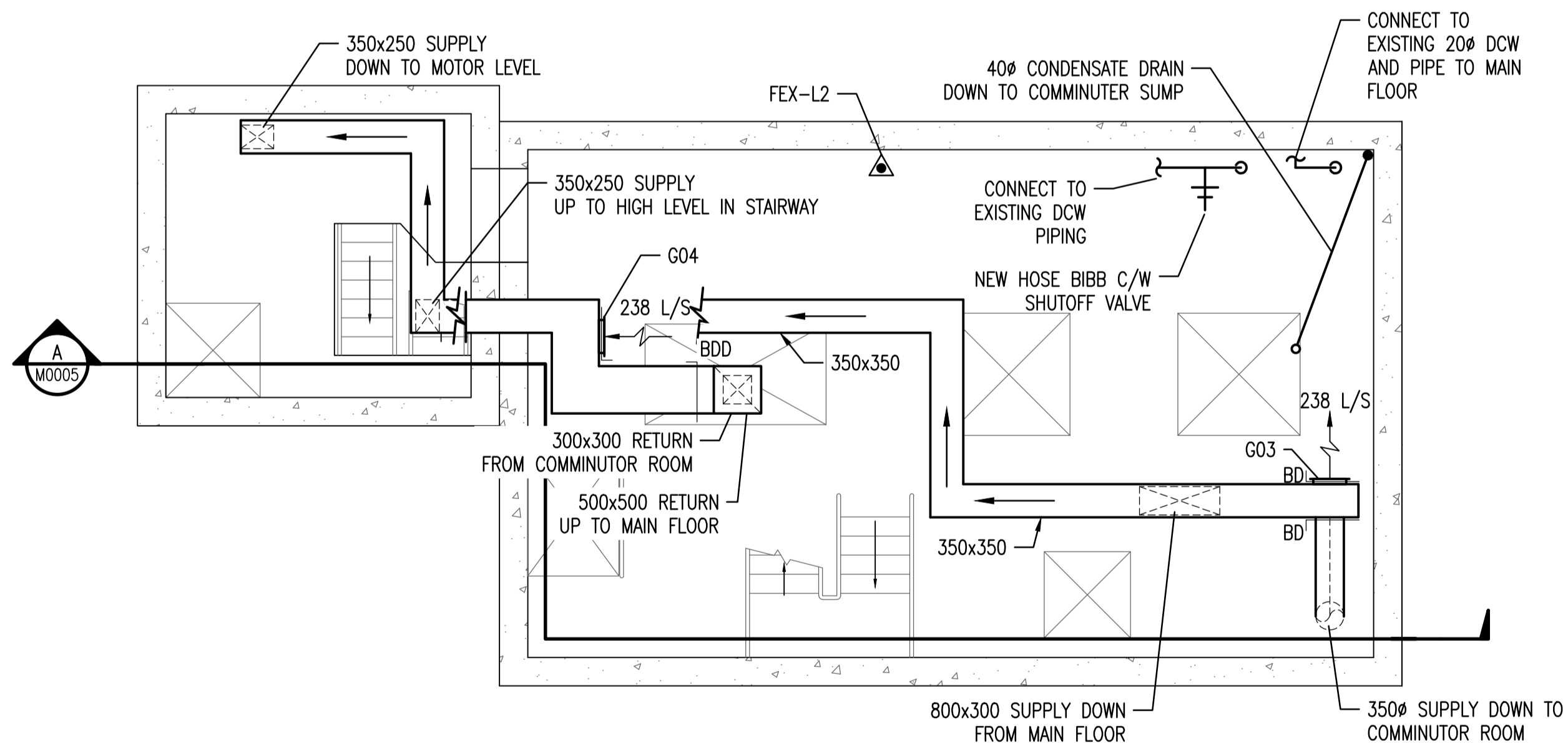


EQUIPMENT LAYOUT PLAN - MAIN FLOOR - ELEV. 230.900
SCALE: 1 : 50



SECTION B-B
SCALE: 1 : 30



EQUIPMENT LAYOUT PLAN - LOWER LEVEL - ELEV. 227.850
SCALE: 1 : 50

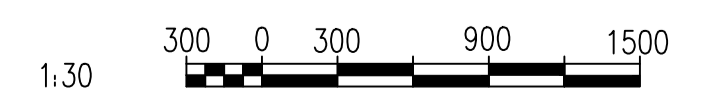
DESIGN CRITERIA:

THE BUILDING ENVIRONMENTAL CONTROL SYSTEMS SHOWN ON THESE DRAWINGS HAVE BEEN DESIGNATED TO THE REQUIREMENTS OF THE MANITOBA BUILDING CODE AND VENTILATED AT A MINIMUM OF 6 AIR CHANGES PER HOUR CONTINUOUS. WHEN THE STATION IS UNOCCUPIED, THE SYSTEM WILL CONTINUE TO PROVIDE 6 AIR CHANGES PER HOUR WITH 75% RECIRCULATED AIR. MORE SPECIFICALLY AS FOLLOWS:

- OUTDOOR CONDITIONS OF -36°C IN WINTER AND 30/23°C IN SUMMER.
- INDOOR CONDITIONS OF 15°C IN WINTER AND 35°C IN SUMMER.

AREA	VOLUME (M ³)	MIN. AIR CHANGES PER HOUR	MIN. AIRFLOW (L/s)
MAIN FLOOR	157.7	6	264
LOWER LEVEL	142.8	6	238
COMMUNICATOR LEVEL	212.3	6	354
MOTOR ROOM	123.9	6	207
PUMP ROOM	62.4	6	104
VALVE CHAMBER	37.1	6	62

DRAWING NUMBER	REFERENCE DRAWINGS
----------------	--------------------



00	ISSUED FOR TENDER, BID OPP. 907-2011	2012/02/23	SN	MM
NO.	REVISIONS	DATE	DESIGN	CHECK

SNC-LAVALIN INC.
148 Nature Park Way
Winnipeg, MB, Canada R3P 0X7
204-798-8080

DESIGNED BY: S. NORSWORTHY
DRAWN BY: M.J. PERSSON
SCALE: AS NOTED
DATE: 2011/10/03

CHECKED BY: M. MCKENZIE
APPROVED BY: C. REIMER
RELEASED FOR CONSTRUCTION BY: K. R. ZUREK
DATE: 2012/02/23

CONSULTANT NO.: 508042-0000-4500-0003

ENGINEER'S SEAL

ORIGINAL DRAWING
SEALED BY:
S. S. NORSWORTHY
SNC-LAVALIN
MEMBER #20725
2012/02/23
REV. 00

THE CITY OF WINNIPEG
WATER AND WASTE DEPARTMENT

MONTCALM WASTEWATER PUMPING STATION
2011 UPGRADES
HVAC EQUIPMENT LAYOUT PLAN
MAIN FLOOR AND LOWER LEVEL

CITY DRAWING NUMBER: 1-0164L-M0003
SHEET: 001
REV: 00
SIZE: A1