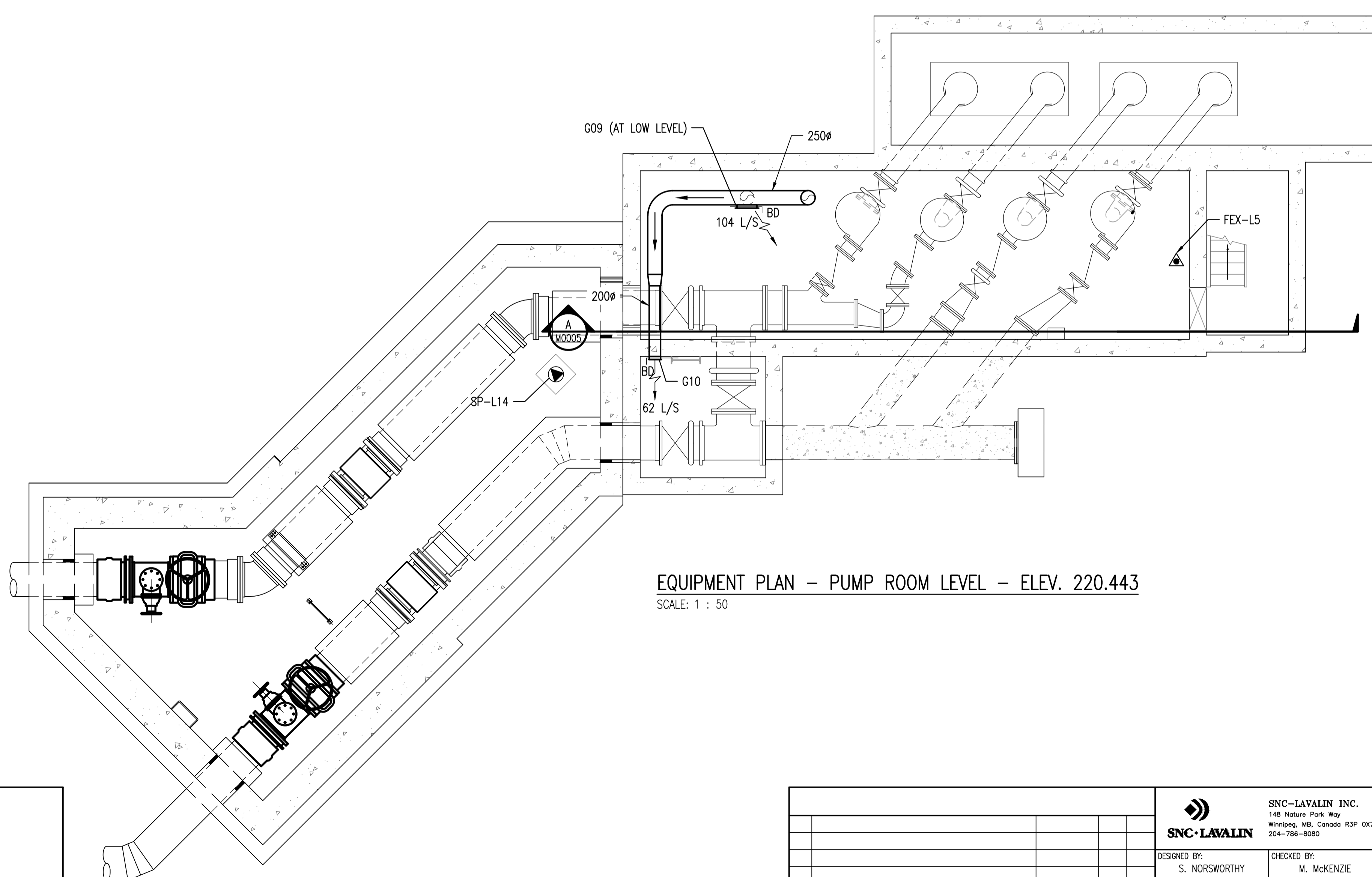


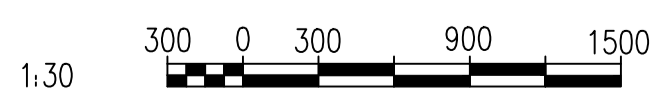
EQUIPMENT PLAN - COMMUNOTOR AND MOTOR ROOM LEVEL - ELEV. 223.262 & 222.933

SCALE: 1 : 50



EQUIPMENT PLAN - PUMP ROOM LEVEL - ELEV. 220.443

SCALE: 1 : 50



NO.	REVISIONS	DATE	DESIGN	CHECK
00	ISSUED FOR TENDER, BID OPP. 907-2011	2012/02/23	SN	MM

		SNC-LAVALIN INC. 148 Nature Park Way Winnipeg, MB, Canada R3P 0X7 204-786-8080	
DESIGNED BY:	S. NORSWORTHY	CHECKED BY:	M. MCKENZIE
DRAWN BY:	M.J. PERSSON	APPROVED BY:	C. REIMER
SCALE:	1:50	RELEASED FOR CONSTRUCTION BY:	K. R. ZUREK
DATE:	2011/10/03	DATE:	2012/02/23
CONSULTANT NO.:		508042-0000-4500-0004	

ENGINEER'S SEAL

ORIGINAL DRAWING
SEALED BY:
S. S. NORSWORTHY
SNC-LAVALIN
MEMBER #20725
2012/02/23
REV. 00

THE CITY OF WINNIPEG
WATER AND WASTE DEPARTMENT

MONTCALM WASTEWATER PUMPING STATION
2011 UPGRADES
HVAC EQUIPMENT LAYOUT PLAN
MOTOR, PUMP AND COMMUNOTOR ROOMS

CITY DRAWING NUMBER	SHEET	REV.	SIZE
1-0164L-M0004	001	00	A1

DRAWING NUMBER	REFERENCE DRAWINGS
----------------	--------------------