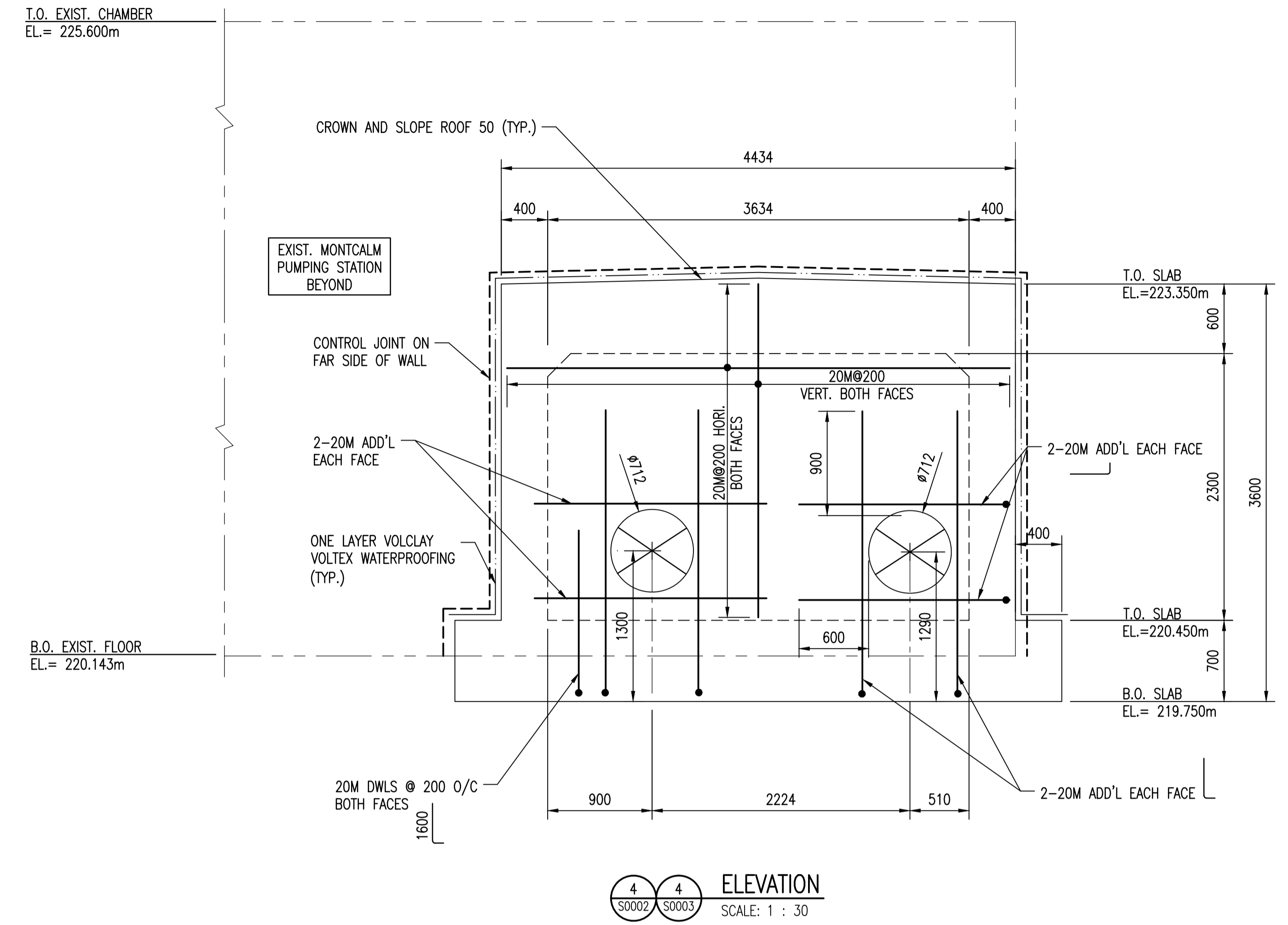


3 3 ELEVATION
S0002 S0003 SCALE: 1 : 30



LAST SAVE: 2012/02/24 - 11:07am
PATH: M:\508042\ENGV4251R\DD - General DWG\1-0164L-S0006-001-00.dwg

DRAWING NUMBER	REFERENCE DRAWINGS

NO.	REVISIONS	DATE	DESIGN	CHECK
00	ISSUED FOR TENDER, BID OPP. 907-2011	2012/02/02	R.B	D.S.

<p>SNC-LAVALIN INC. 148 Nature Park Way Winnipeg, MB, Canada R3P 0X7 204-786-8080</p>		<p>ENGINEER'S SEAL</p> <p>DESIGNED BY: R. BEAN</p> <p>CHECKED BY: D. SIDHU</p> <p>DRAWN BY: L. GAO</p> <p>APPROVED BY: C. REIMER</p> <p>SCALE: AS NOTED</p> <p>RELEASED FOR CONSTRUCTION BY: K.R. ZUREK</p> <p>DATE: 2011/09/15</p> <p>DATE: 2012/02/23</p> <p>CONSULTANT NO.: 508042-0000-42DD-0006</p>
---	--	--

ORIGINAL DRAWING SEALED BY:
R.C.BEAN
SNC-LAVALIN INC
2012/02/12
REV.00

Certificate of Authorization
SNC-Lavalin Inc.
No. 4489

THE CITY OF WINNIPEG
WATER AND WASTE DEPARTMENT

MONTCALM WASTEWATER PUMPING STATION
2011 UPGRADES
STRUCTURAL REINFORCING
FLOWMETER CHAMBER
WALL ELEVATIONS AND DETAILS

CITY DRAWING NUMBER	SHEET	REV.	SIZE
1-0164L-S0006	001	00	A1

1-0164L-S0006-001-00.dwg