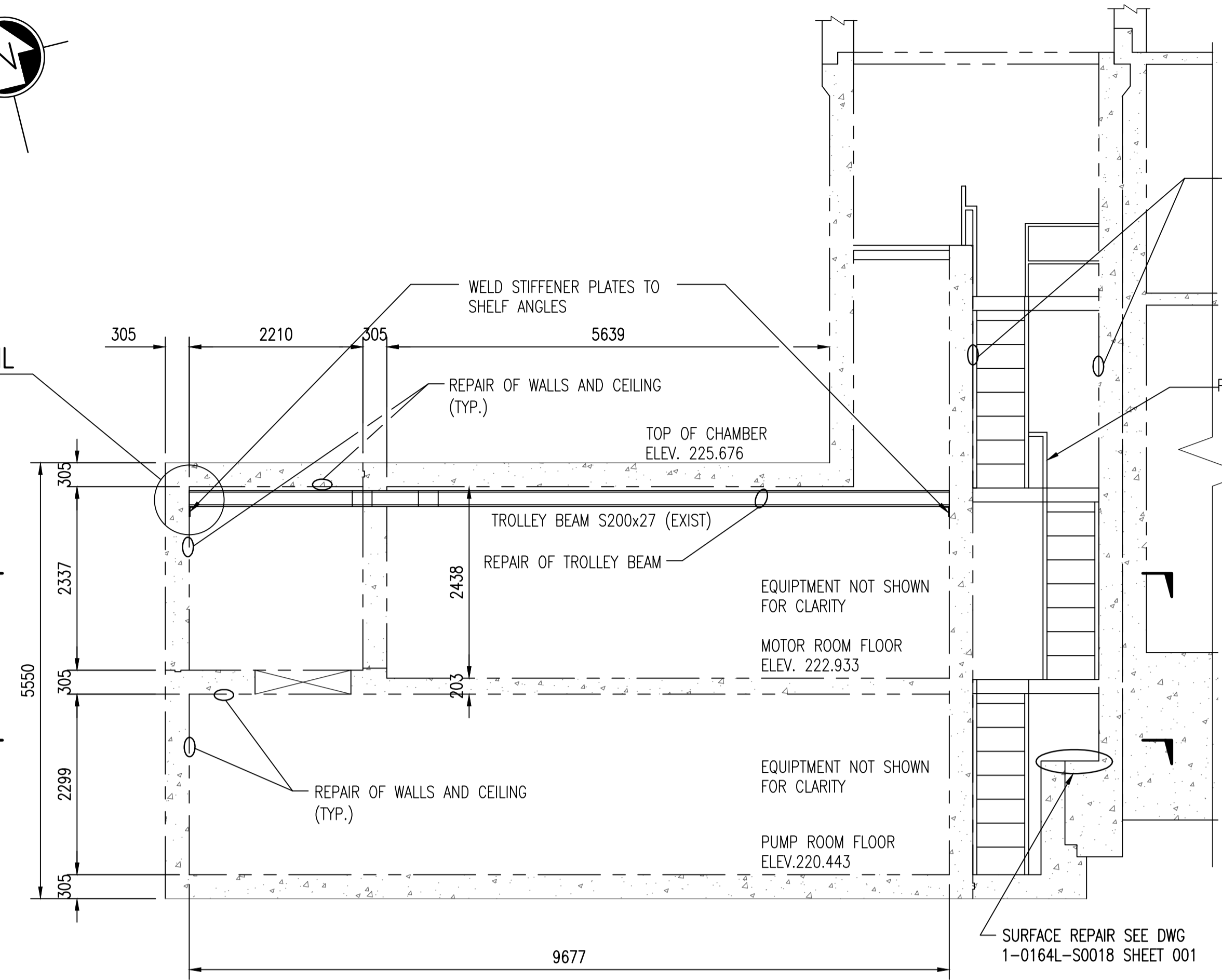


2
-
1

A
-
1

C
S0018



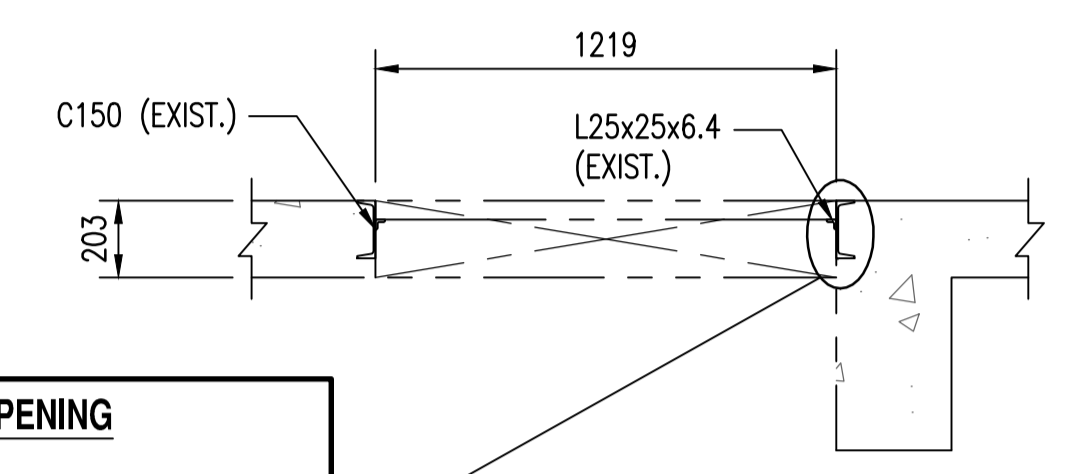
MOTOR ROOM AND PUMP ROOM CROSS-SECTION
SCALE: 1 : 50

STAIR WELL INTERNAL WALLS REPAIR (TYP.)

1. REMOVE ALL THE DEBRIS AND DEFACING FROM THE WALLS.
2. PLUG ANY HOLES IN THE WALLS USING NON SHRINK GROUT.
3. APPLY PAINT ON THE WALLS.

REPAIR AROUND HATCHWAY OPENING

1. CHIP AWAY LOOSE MATERIAL TO EXPOSE CHANNEL AND ANGLE SECTIONS.
2. CUT AND REMOVE THE CORRODED ANGLES SUPPORTING THE GRATING ON TWO SIDES.
3. REMOVE THE LOOSE RUST FROM REMAINING STEEL SECTIONS.
4. PAINT THE STEEL SECTIONS.
5. INSTALL C150x16 BELOW THE GRATING TO REPLACE REMOVED ANGLES ON TWO SIDES. C150 TO BE FIXED TO WALL USING HILTI KB3-HDG 12.7mmx178mm EXPANSION ANCHORS AT SPACING OF 200mm.
6. CHIP AWAY LOOSE CONCRETE.
7. APPLY CEMENT SLURRY ON EXPOSED SURFACE.
8. REPAIR DAMAGED CONCRETE USING GROUT.

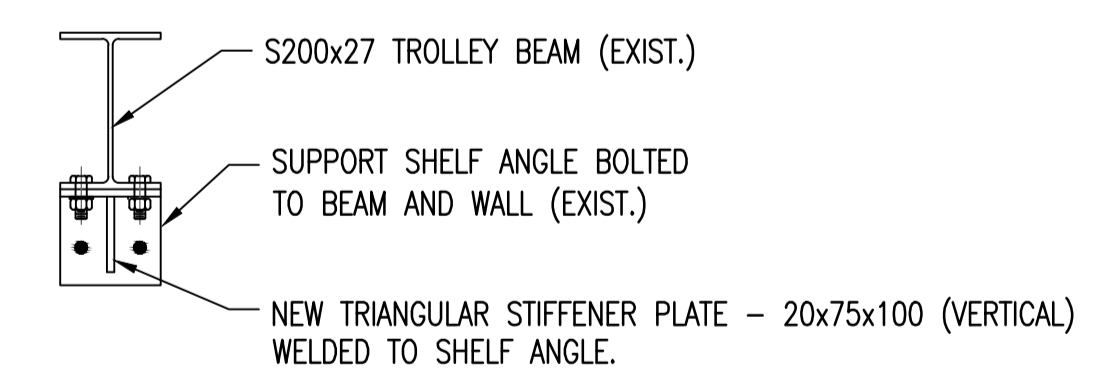


B SECTION
SCALE: 1 : 20

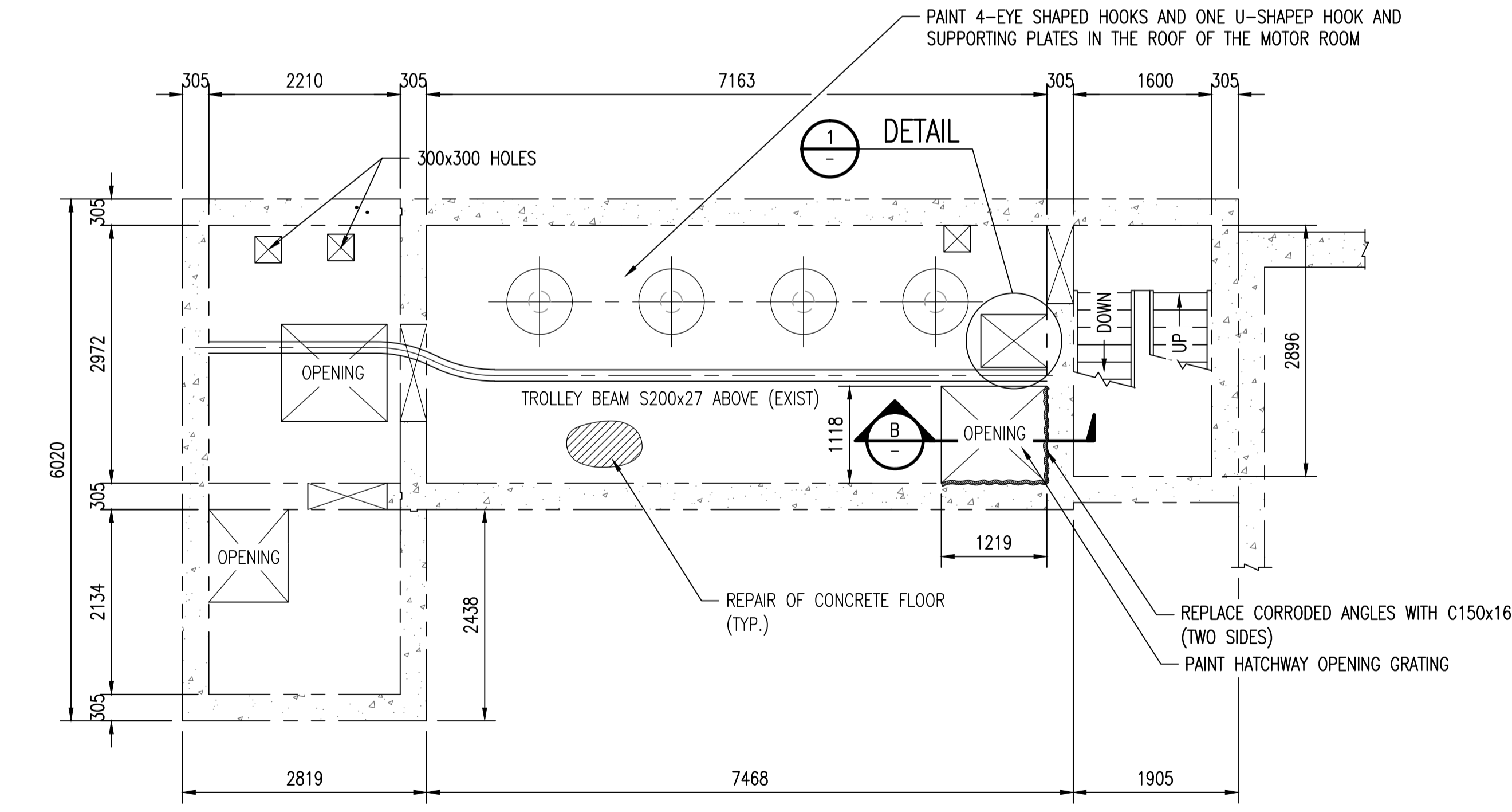
REPAIR ON THE BOTTOM OF THE CLOSED OPENING

1. CHIP AWAY LOOSE PAINT AND REMOVE RUST FROM STEEL SECTION.
2. PAINT THE STEEL SECTION.

1 DETAIL
SCALE: 1 : 20



2 DETAIL (TWO LOCATIONS)
SCALE: 1 : 10



A SECTION (MOTOR ROOM - PLAN AT ELEV. 222.933)
SCALE: 1 : 50

NOTES:

1. SEE DRAWING 1-0164L-S0001 FOR GENERAL NOTES.

REPAIR OF WALLS AND CEILING

- (MOTOR ROOM AND PUMP ROOM)
1. CLEAN THE WALLS/CEILING TO REMOVE ALL DEBRIS AND DEFACING.
 2. APPLY PAINT ON THE WALLS AND THE CEILING.

REPAIR OF CONCRETE FLOOR

- (MOTOR ROOM)
1. CLEAN AND PROFILE THE CONCRETE SURFACE TO CSP-2 USING USING A SHOT BLASTER.
 2. CLEAN ALL THE DEBRIS FROM THE SURFACE.
 3. PAINT THE CONCRETE SURFACE.

REPAIR OF TROLLEY BEAM

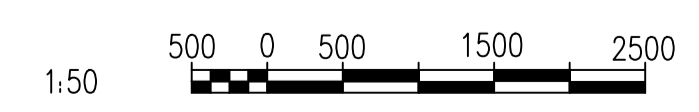
1. REMOVE ALL LOOSE PAINT AND RUST FROM THE TROLLEY BEAM AND SUPPORTING BRACKETS.
2. PAINT THE TROLLEY, TROLLEY BEAM, SUPPORTING BRACKETS AND SHELF ANGLES.

STRUCTURAL STEEL:

- (FOR LIFTING STATION REPAIRS ONLY)
1. ALL STRUCTURAL STEEL SHAPES AND PLATES TO BE IN ACCORDANCE WITH CAN3-G40.21-M MINIMUM GRADE 300W. W SECTIONS AND HSS SECTIONS TO BE GRADE 350W.
 2. DETAILING, FABRICATION AND ERECTION TO BE IN ACCORDANCE WITH CAN/CSA-S16-09. LIMIT STATES DESIGN OF STEEL STRUCTURES.
 3. STRUCTURAL STEEL SHALL BE PAINTED OR HOT-DIP GALVANIZED AS INDICATED ON THE DRAWINGS.
 4. STRUCTURAL STEEL SHALL BE HOT-DIP GALVANIZED IN ACCORDANCE WITH ASTM A.123 TO A MIN. NET RETENTION OF: 610 GRAMS/METRE SQ. FOR LESS THAN 6 THICK, 702 GRAMS/METRE SQ. GREATER THAN 6 THICK. TOUCH UP DAMAGED AREAS WITH 2 COATS OF Z.R.C. GALVALITE GALVANIZING COMPOUND TO ASTM A780.
 5. PREPARATION OF SURFACES AND THE APPLICATION OF PAINT SHALL BE IN ACCORDANCE WITH THE MANUFACTURER'S INSTRUCTIONS.
 6. ALL WELDING TO CONFORM TO CSA W47.1 & W59.
 7. WELDING SHOPS TO BE CERTIFIED TO DIVISION 1 OR 2 OF W47.1 BY THE CANADIAN WELDING BUREAU. ALL WELDING TO BE PERFORMED BY CWB CERTIFIED WELDERS.
 8. ALL BOLTS FOR STRUCTURAL STEEL SHALL BE 3/4" HIGH STRENGTH BOLTS MEETING THE REQUIREMENTS OF ASTM A325, TYPE 1. ALL NUTS SHALL CONFORM TO ASTM SPEC A563, GRADE DH, OR ASTM A194, GRADE 2H, AND WASHERS SHALL CONFORM TO ASTM SPEC F436. BOLTS, NUTS AND WASHERS SHALL NOT BE WELDED.
 9. ALL BOLTED CONNECTIONS SHALL USE A MIN. OF TWO HIGH STRENGTH BOLTS UNLESS NOTED OTHERWISE.
 10. TOUCH UP ALL FIELD WELDS AND DAMAGED AREAS WITH ZINC RICH PRIMER OR PRIMER AND TOPCOAT FOR HDG OR PAINTED SURFACES, RESPECTIVELY.

REFER TO PAINT SPECIFICATIONS FOR PAINT FINISHES AND FORMULAE.

263	SUPERSTRUCTURE DETAILS
264	CONCRETE AND STEEL DETAILS
DRAWING NUMBER	REFERENCE DRAWINGS



00	ISSUED FOR TENDER BID OPP. 907-2011	2012/02/24	DS	RB
NO.	REVISIONS	DATE	DESIGN	CHECK

<p>SNC-LAVALIN INC. 148 Nature Park Way Winnipeg, MB, Canada R3P 0X7 204-786-8080</p>	
DESIGNED BY: D. SIDHU	CHECKED BY: R. C. BEAN
DRAWN BY: M. TUGADE	APPROVED BY: C. J. REIMER
SCALE: AS SHOWN	RELEASED FOR CONSTRUCTION BY: K.R. ZUREK
DATE: 2011/09/29	DATE: 2012/02/24
CONSULTANT NO.: 508042-0000-42DD-0017	

<p>THE CITY OF WINNIPEG WATER AND WASTE DEPARTMENT</p>	
<p>ORIGINAL DRAWING SEALED BY: D. S. SIDHU SNC-LAVALIN MEMBER #24837 2012/02/23 REV. 00</p>	
<p>MONTCALM WASTEWATER PUMPING STATION 2011 UPGRADE PLAN, SECTIONS AND DETAIL MOTOR ROOM AND PUMP ROOM REPAIRS</p>	
CITY DRAWING NUMBER	SHEET REV. SIZE
1-0164L-S0017	001 00 A1