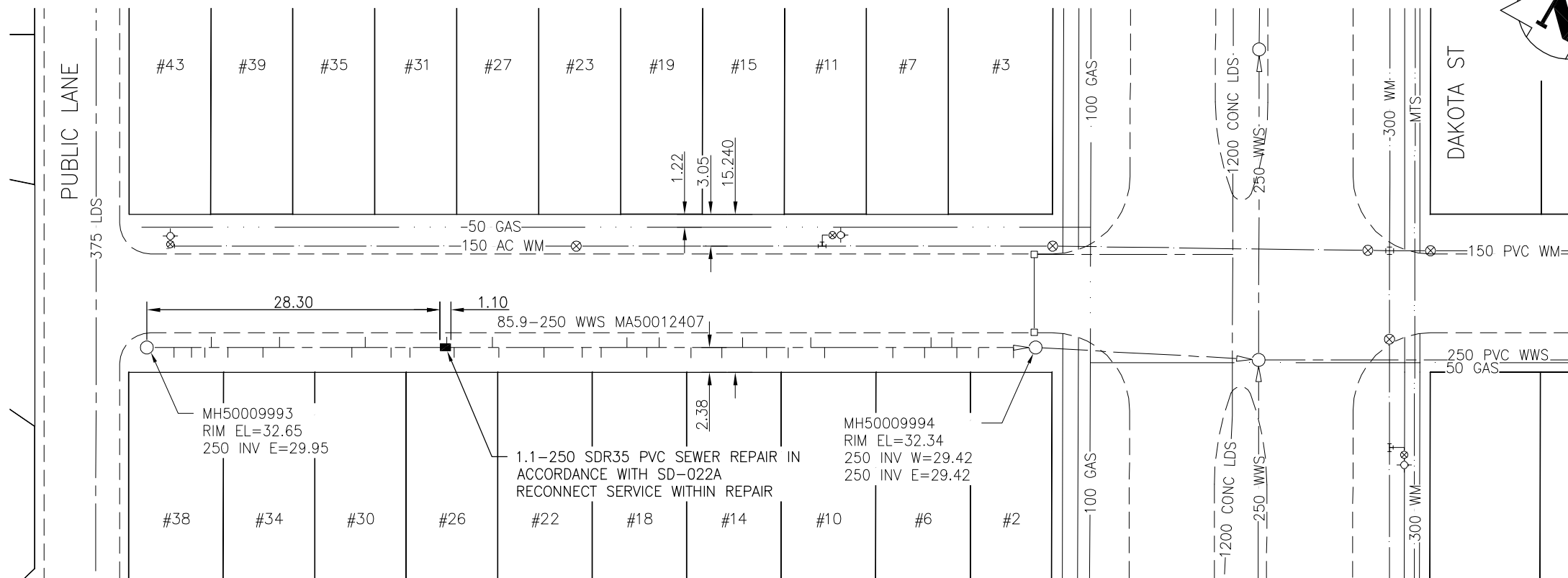


# LESTON PLACE



SEWER JUNCTION INFORMATION  
FOR SEWER ID MA50012407  
REFERENCE—METERS EAST OF MANHOLE MH50009993

DIST. FROM REF. MH	JUNCTION DIA.	CLOCK REF.	SERVICE TYPE	DESCRIPTION
2.6	150	04	CN	CAPPED
4.3	150	03	CNI	
5.6	150	03	CN	
6.2	150	09	CN	
7.8	150	03	CN	
11.2	150	03	CN	CAPPED
12.8	150	10	CN	
19.8	150	03	CN	
21.1	150	09	CN	
23.6	150	02	CN	
25.4	150	03	CN	
29.0	150	09	CNI	
29.7	150	03	CN	CAPPED
33.4	150	09	CN	
34.0	150	03	CNI	
38.4	150	03	CN	CAPPED
42.1	150	02	CN	
43.9	150	02	CN	
46.4	150	10	CNI	
48.3	150	03	CN	
49.5	150	09	CN	
52.6	150	02	CN	
55.6	150	03	CN	CAPPED
57.6	150	09	CNI	
59.9	150	02	CN	
62.0	150	03	CN	
64.2	150	09	CN	
65.5	150	03	CN	CAPPED
72.1	150	03	CNI	
75.2	150	03	CN	CAPPED
75.8	150	09	CNI	
77.8	150	09	CN	
78.3	150	03	CN	
80.4	150	03	CN	
83.8	150	03	CN	CAPPED

ALL JUNCTION INFORMATION  
BASED ON CCTV INSPECTION

BID OPPORTUNITY 911-2011

## METRIC

WHOLE NUMBERS INDICATE MILLIMETRES  
DECIMALIZED NUMBERS INDICATE METRES

BENCH MARK: N.E. Cor. Nova Vista Dr. & Dakota St., Tblt. on top of 0.05 m dia. x 2.4 m iron pipe, 2.7 m S. of N.L. of Nova Vista Dr. & 0.6 m W. of E.L. of Dakota St.

### LOCATION APPROVED UNDERGROUND STRUCTURES

SUPV. U/G STRUCTURES COMMITTEE DATE

NOTE:  
LOCATION OF UNDERGROUND STRUCTURES AS SHOWN ARE BASED ON THE BEST INFORMATION AVAILABLE BUT NO GUARANTEE IS GIVEN THAT ALL EXISTING UTILITIES ARE SHOWN OR THAT THE GIVEN LOCATIONS ARE EXACT. CONFIRMATION OF EXISTENCE AND EXACT LOCATION OF ALL SERVICES MUST BE OBTAINED FROM THE INDIVIDUAL UTILITIES BEFORE PROCEEDING WITH CONSTRUCTION.

B.M. ELEV.	62-22 232.372m		
NO.	REVISIONS	DATE	BY

DESIGNED BY	J.C	CHECKED BY	W.A.B.
DRAWN BY	D.L.	APPROVED BY	H.A.K.
HOR. SCALE:	1:500	RELEASED FOR CONSTRUCTION:	
VERTICAL:	N/A	DATE	
DATE	11.09.01	DATE	

ENGINEER'S SEAL

CONSULTANT DRAWING NO.  
C-124

2011 SEWER RENEWALS AND EXTERNAL POINT REPAIRS CONTRACT NO. 18

LESTON PLACE  
2ND MH W OF DAKOTA ST TO 1ST MH W OF DAKOTA ST  
250 WWS POINT REPAIR

SHEET	OF
31	58
CAD FILE DRAWING NUMBER 13090c-124-768.dwg	
CITY DRAWING NUMBER 9739	

V:\1112\active\111213090\drawing\402\_design\sheet\_files\13090c-124-768-Leston.dwg  
2011 December 07, 9:16 a.m.