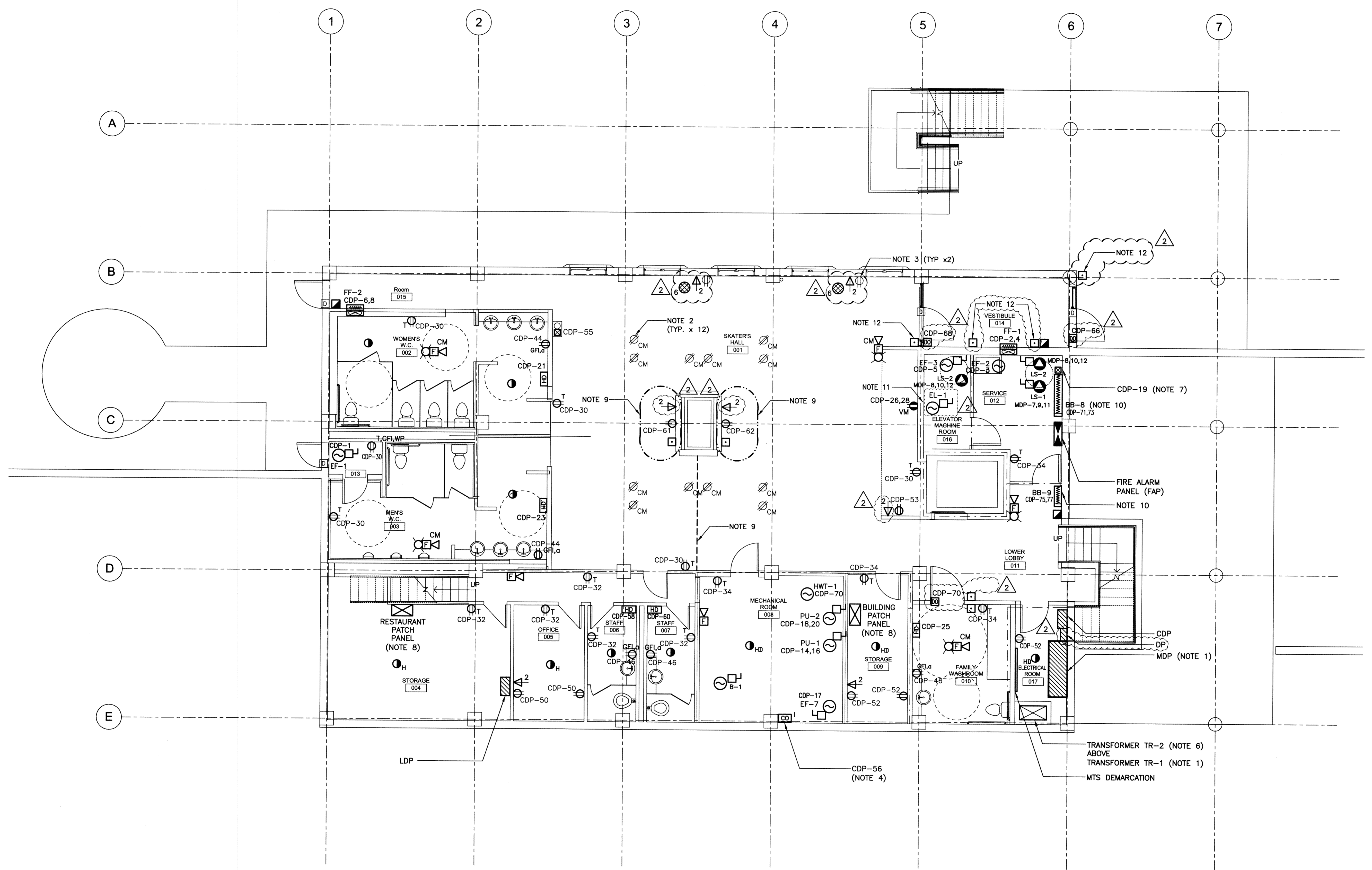


File Name: P:\Projects\2011\11-0902-04\E3-0-Rev 2.dwg - Tab: E3.0 Plotted By: DBereche 12/03/07 [Wed 5:19pm]
 24 x 36 / PLOT SCALE: 1:1

THIS DRAWING MUST NOT BE SCALED.
 THE GENERAL CONTRACTOR SHALL VERIFY ALL DIMENSIONS, DATINGS, AND LEVELS PRIOR TO COMMENCEMENT OF WORK. ALL GROSS AND OMISSIONS TO BE REPORTED TO NUMBER TEN ARCHITECTURAL GROUP BEFORE PROCEEDING.
 VARIATIONS AND MODIFICATIONS TO WORK SHOWN ON THESE DRAWINGS SHALL NOT BE CARRIED OUT WITHOUT WRITTEN PERMISSION OF NUMBER TEN ARCHITECTURAL GROUP.
 THIS DRAWING IS THE EXCLUSIVE PROPERTY OF NUMBER TEN ARCHITECTURAL GROUP AND THE COPYRIGHT IN THE SAME BEING RESERVED TO THEM. IT MAY BE REPRODUCED ONLY WITH THE PERMISSION OF NUMBER TEN ARCHITECTURAL GROUP, IN WHICH CASE THE REPRODUCTION MUST BEAR THEIR NAME.

REVISION/ ISSUED/ PLOTTED	DATE
Rev. 2 - RE-ISSUED FOR TENDER	MARCH 07/2012
Rev. 1 - ISSUED FOR TENDER	FEBRUARY 03/2012
Rev. 0 - ISSUED FOR TENDER	NOVEMBER 21/2011

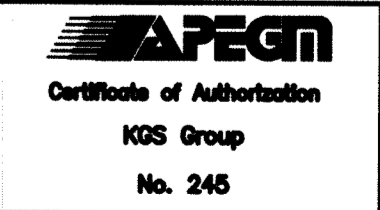

- NOTES:**
- TRANSFORMER TR-1 AND THE MDP ARE TO BE MOUNTED ON A 4" HOUSEKEEPING PAD.
 - REWIRE EXISTING CEILING MOUNTED RECEPTACLES TO CDP-49,51.
 - REWIRE EXISTING SKATER HALL RECEPTACLES TO CDP-53.
 - CONTRACTOR TO SUPPLY AND INSTALL A HONEYWELL ESPRIMO CARBON MONOXIDE DETECTOR (ESASCO). CONTRACTOR IS ALSO RESPONSIBLE FOR PROVIDING 24VDC POWER TO THE CARBON MONOXIDE DETECTOR FROM THE SPECIFIED CIRCUIT AND WIRE THE OUTPUT RELAY TO THE BUILDINGS SECURITY SYSTEM.
 - PICK UP EXISTING RECEPTACLES AS REQUIRED.
 - TRANSFORMER TR-2 TO BE MOUNTED ABOVE TRANSFORMER TR-1.
 - CONTRACTOR TO TIE THE LIFT STATION HIGH LEVEL ALARM AUXILIARY DRY CONTACTS TO THE BUILDING'S SECURITY SYSTEM.
 - SEE RISER DIAGRAM ON DRAWING E11.0 FOR INTERCONNECT DETAILS.
 - PROVIDE POWER, NETWORK AND COAXIAL TO THE CEILING BULKHEAD FOR FUTURE TV WIRING.
 - BASEBOARD HEATERS ARE SHOWN SCHEMATICALLY. FINAL PLACEMENT TO BE COORDINATED WITH ARCHITECT.
 - THE CONTRACT FOR THE ELEVATOR INSTALLATION SHALL BE HELD AS SEPARATE TENDER PACKAGE. ELECTRICIAN IS TO COORDINATE WITH THE ELEVATOR SUPPLIER TO PROVIDE POWER TO THE ELEVATOR.
 - REFER TO ARCHITECTURAL DRAWINGS FOR MOUNTING HEIGHTS. INSTALL DOOR OPERATOR AS PER DETAIL C ON DRAWING E12.0.



1 LOWER LEVEL PLAN - POWER AND SYSTEMS
 5 0 5 10 15 FT.
 SCALE: 3/16"=1'-0" (24" X 36")
 3/32"=1'-0" (11" X 17")

numberTEN
 architectural group
 winnipeg MB regina SK victoria BC
 204 942.0981 306 721.1501 250 460.2106
 architecture • interior design • graphic design

PEGUIS PAVILION
 UPGRADES AND ENTRY ADDITION
 BIDDING #913-2011
 project
 ELECTRICAL
 LOWER LEVEL
 POWER AND SYSTEMS
 sheet title

KGS GROUP | CONSULTING ENGINEERS
 consultant

 Certificate of Authorization
 KGS Group
 No. 245


scale: 3/16"=1'-0"
 date: August 15, 2011
 drawn by: JPL
 checked by:
 project no. 2011026
 sheet no. **E3.0**