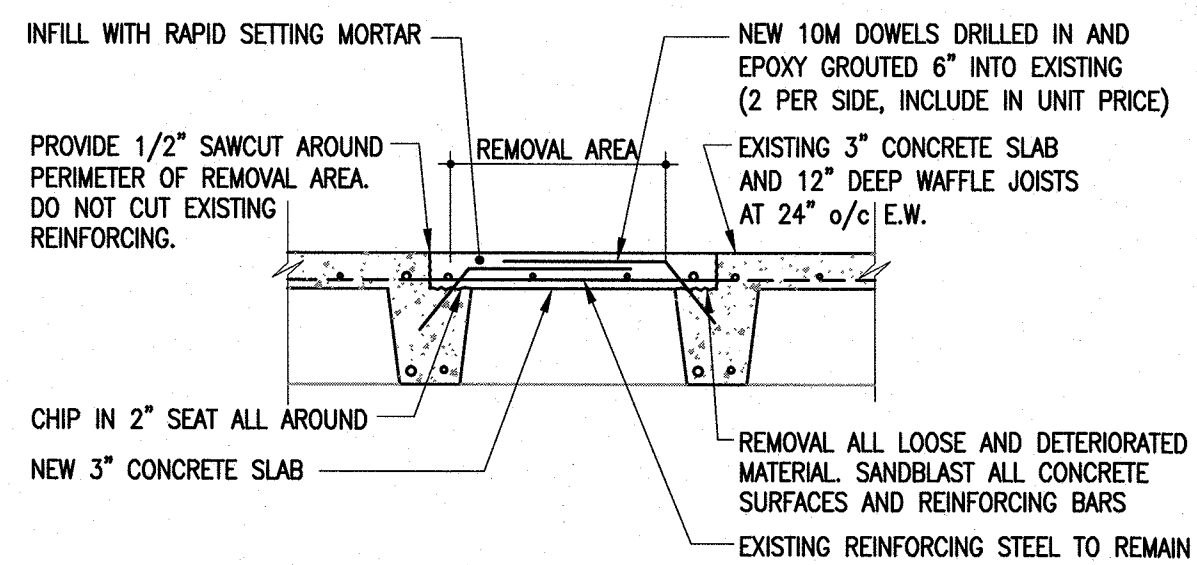
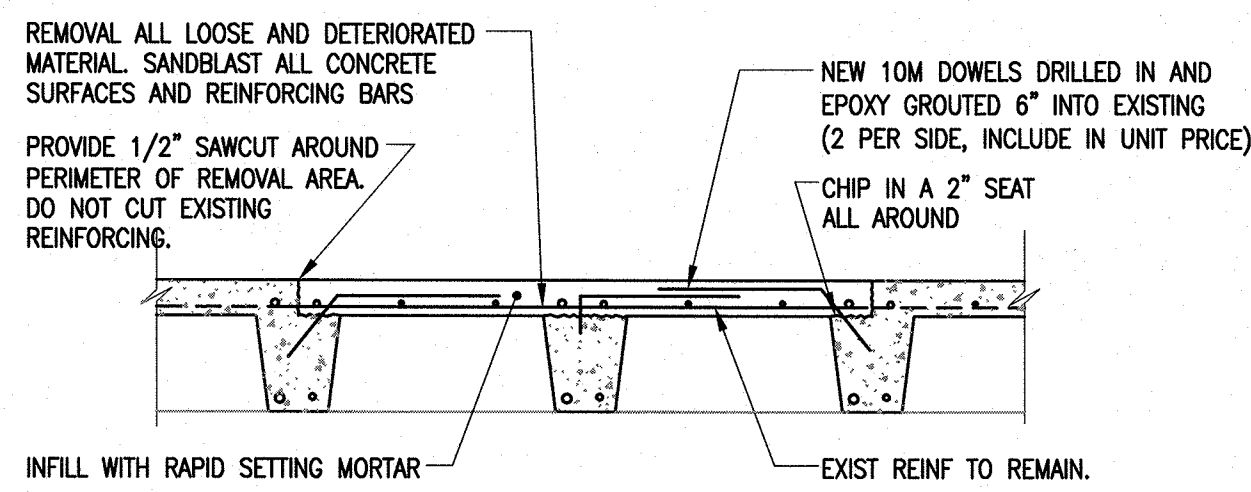


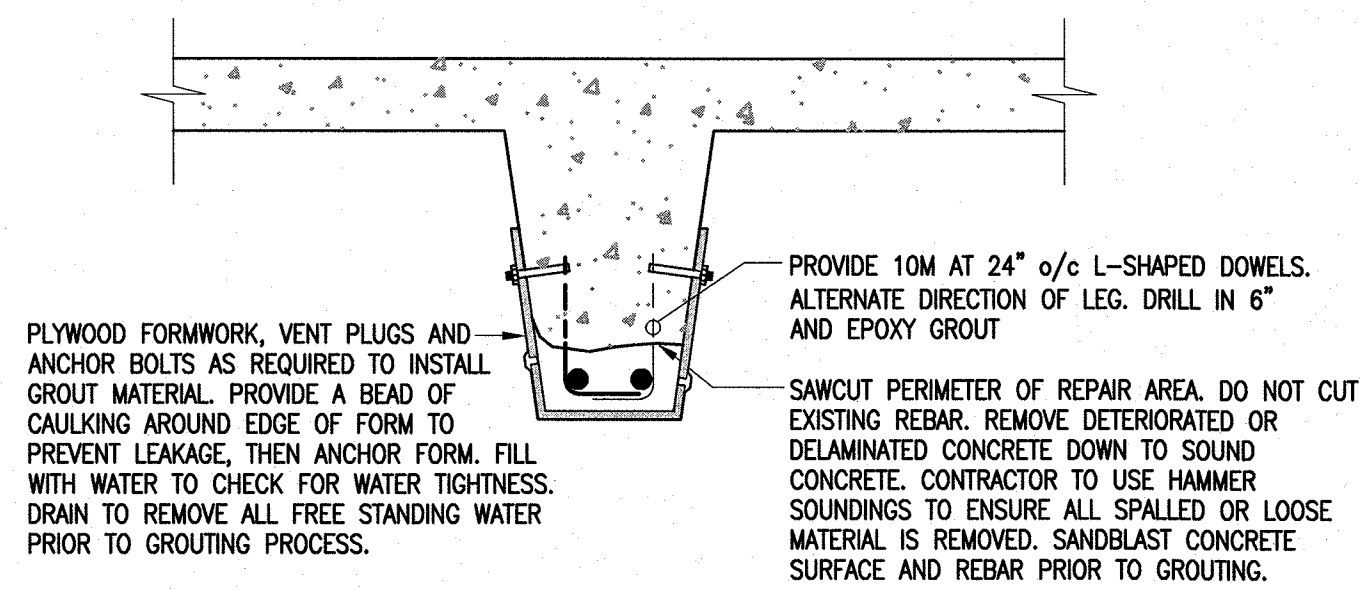
1 PART PLAN WAFFLE SLAB LAYOUT
S3.1 SCALE: 3/8" = 1'-0"



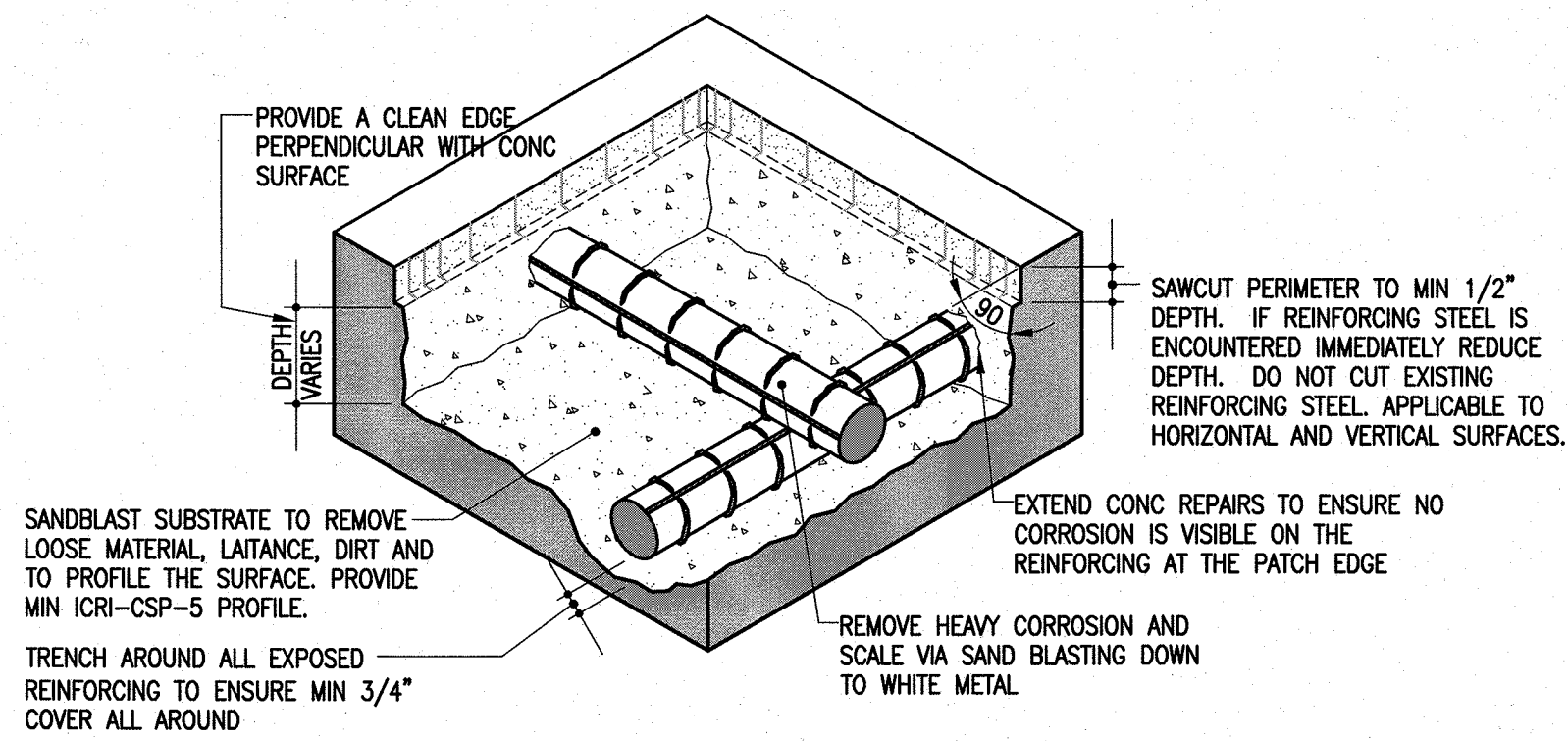
2 PAN SLAB REMOVAL AND REPLACEMENT
S3.1 SCALE: 3/4" = 1'-0"



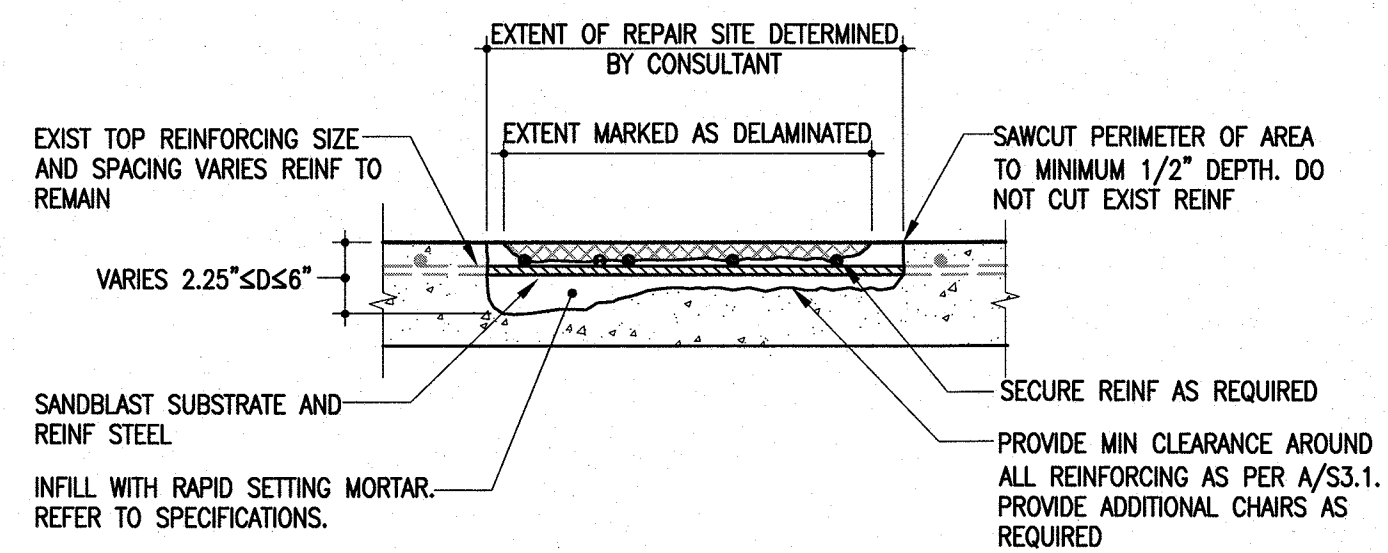
3 PAN SLAB REMOVAL AND REPLACEMENT
S3.1 SCALE: 3/4" = 1'-0"



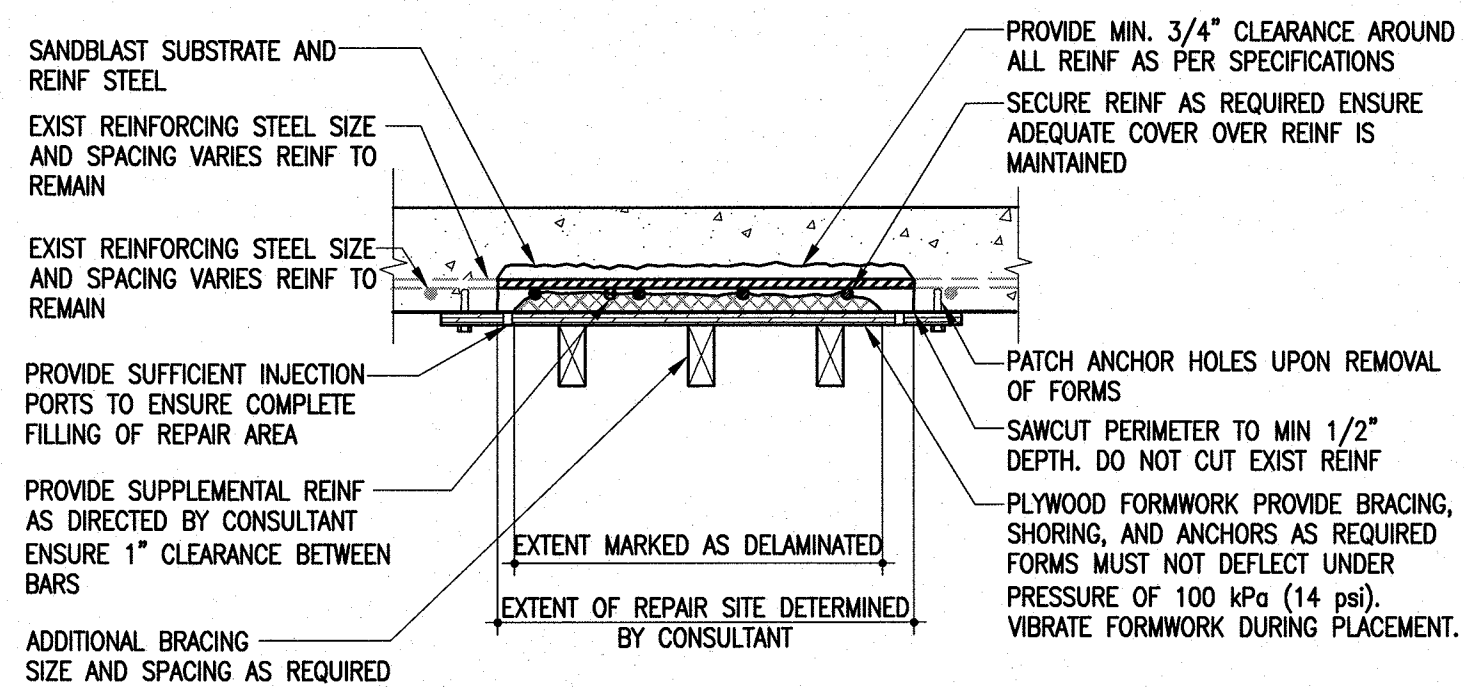
4 RIB GROUTING REPAIR
S3.1 SCALE: 1 1/2" = 1'-0" (UNIT PRICE PER LINEAL FOOT) (REFER TO SECTION 03 93 20)



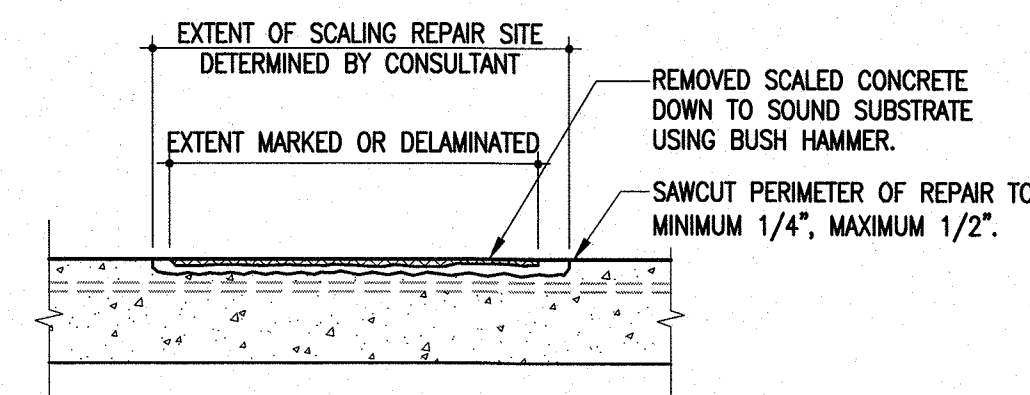
A TYPICAL SURFACE PREPARATION OF DELAMINATED CONCRETE
S3.1 SCALE: NTS (REFER TO SECTION 03 91 10)



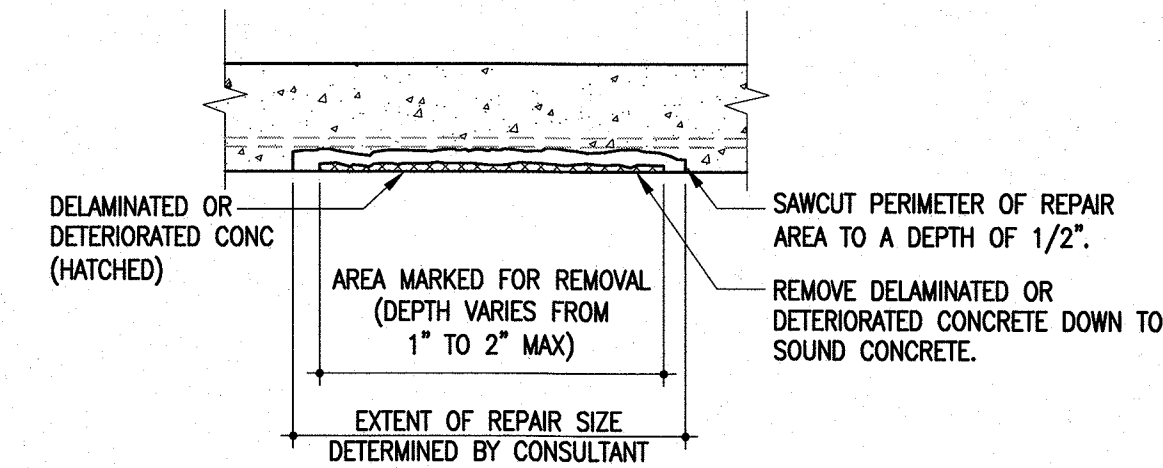
B TOP SURFACE REPAIR
S3.1 SCALE: NTS (UNIT PRICE ITEM) (REFER TO SECTION 03 92 10)



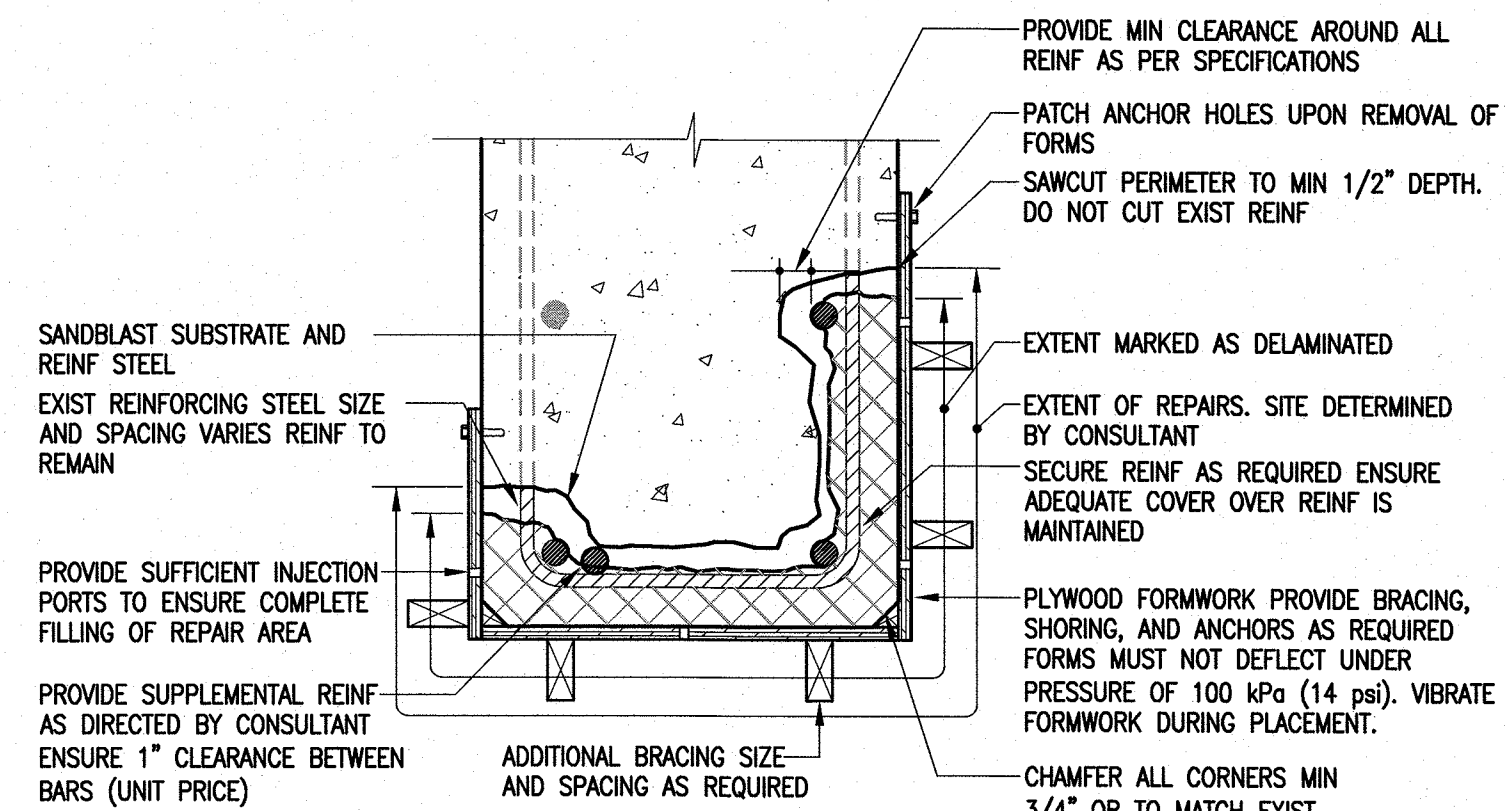
C SOFFIT/WALL PRESSURE GROUTING
S3.1 SCALE: NTS (UNIT PRICE ITEM) (REFER TO SECTION 03 93 20)



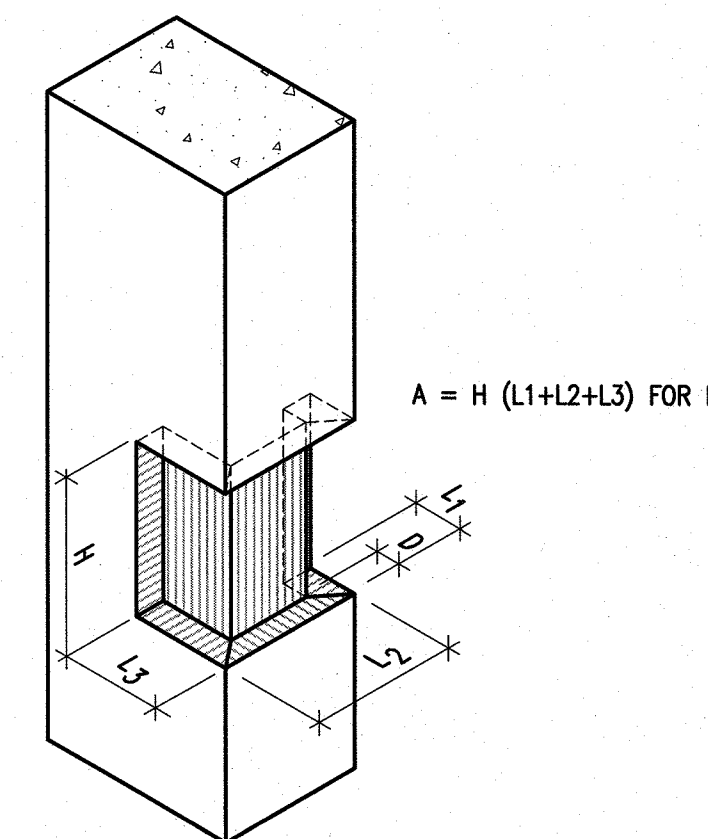
D SCALING REPAIR
S3.1 SCALE: NTS (UNIT PRICE ITEM)



E SOFFIT PATCHING
S3.1 SCALE: NTS (UNIT PRICE ITEM) (REFER TO SECTION 03 93 10)



F BEAM SIDES & SOFFIT REPAIR
S3.1 SCALE: NTS (UNIT PRICE PER SQUARE FOOT) (REFER TO SECTIONS 03 93 20 AND 03 93 30)



G MEASUREMENT PROCEDURES FOR BEAMS AND COLUMNS
S3.1 SCALE: NTS

THIS DRAWING MUST NOT BE SCALED.
THE GENERAL CONTRACTOR SHALL VERIFY ALL DIMENSIONS, DATINGS, AND LEVELS PRIOR TO COMMENCEMENT OF WORK. ALL ERRORS AND OMISSIONS TO BE REPORTED TO NUMBER TEN ARCHITECTURAL GROUP BEFORE PROCEEDING.
VARIATIONS AND MODIFICATIONS TO WORK SHOWN ON THESE DRAWINGS SHALL NOT BE CARRIED OUT WITHOUT WRITTEN PERMISSION OF NUMBER TEN ARCHITECTURAL GROUP.
THIS DRAWING IS THE EXCLUSIVE PROPERTY OF NUMBER TEN ARCHITECTURAL GROUP AND THE COPYRIGHT IN THE SAME BEING RESERVED TO THEM. IT MAY BE REPRODUCED ONLY WITH THE PERMISSION OF NUMBER TEN ARCHITECTURAL GROUP, IN WHICH CASE THE REPRODUCTION MUST BEAR THEIR NAME.
REVISED/ ISSUED/ PLOTTED DATE
ISSUED FOR TENDER NOV 21, 2011

APEGM
Certificate of Authorization
Crosier Kilgour & Partners Ltd.
No. 235 Date: Nov 21, 2011

numberTEN
architectural group
winnipeg MB regina SK victoria BC
204 942.0981 306 721.1501 250 360.2106
architecture • interior design • graphic design

PEGUIS PAVILION
UPGRADES AND ENTRY ADDITION
BIDDING #913-2011

project
TYPICAL CONCRETE
REPAIR DETAILS

sheet title
300-278 Carlton Street
Winnipeg, Manitoba R5C 0A6
T 204 943 7501
F 204 943 7507
2011-0492
Crosier Kilgour & Partners Ltd.
CONSULTING STRUCTURAL ENGINEERS

consultant
PROVINCE OF MANITOBA
D.J. MIZAK
Member
20801
REGISTERED PROFESSIONAL ENGINEER

scale: AS NOTED
drawn by: MS date: November 21, 2011
checked by: TKM
project no. 2011026 sheet no. S3.1