

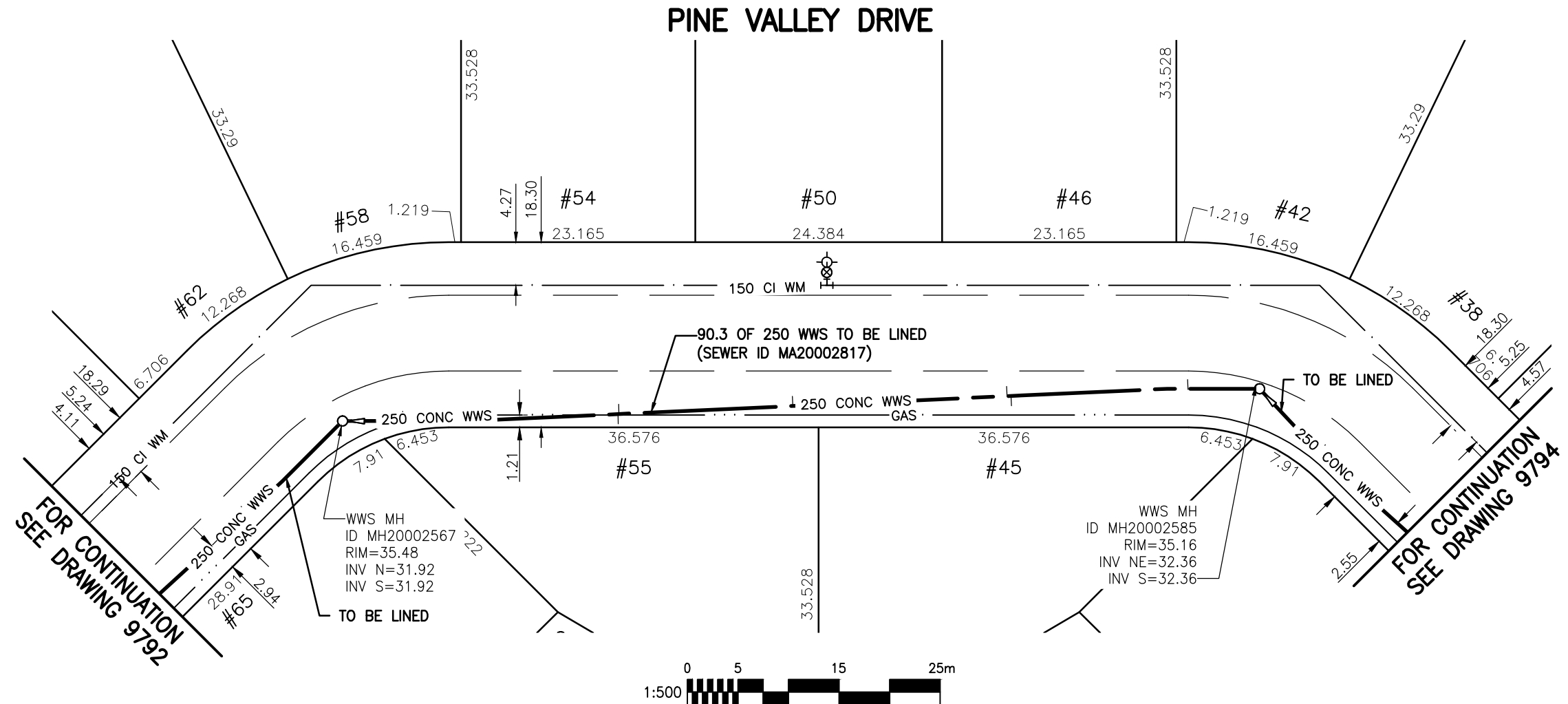


**SEWER JUNCTION INFORMATION
FOR SEWER ID MA20002817**

REFERENCE—METERS WEST OF MANHOLE MH20002585

DIST. FROM REF. MANHOLE	JUNCTION DIA.	CLOCK REF.	SERVICE TYPE	DESCRIPTION
7.0	100	02	CNI	LIVE
24.6	100	10	CN	LIVE
25.0	100	02	CN	LIVE
46.2	100	02	CN	LIVE
63.4	100	03	CX	LIVE
63.5	100	10	CX	LIVE
84.8	100	01	CN	-

ALL JUNCTION INFORMATION
BASED ON CCTV INSPECTION



WARNING

IF POWER EQUIPMENT OR EXPLOSIVES ARE TO BE USED FOR EXCAVATION ON THIS PROJECT THE CONTRACTOR MUST:

- 1) NOTIFY THE GAS COMPANY OF THE PROPOSED LOCATION OF EXCAVATION.
- 2) TAKE PRECAUTION TO AVOID DAMAGE TO GAS COMPANY INSTALLATIONS.

SEE PROVINCIAL REGULATION 140/92 FOR DETAILS

METRIC

WHOLE NUMBERS INDICATE MILLIMETRES
DECIMALIZED NUMBERS INDICATE METRES

BENCH MARK: S.W. Cor. Browning Blvd. & Pinehurst Cres., 19 mm dia. x 6.1 m I.B. in valve box, 0.3 m N. of S.L Browning Blvd. & 0.3 m W. of W.L. Pinehurst Cres.



Certificate of Authorization

Stantec Consulting Ltd.

No. 1301 Date: _____

BID OPPORTUNITY 927-2011

LOCATION APPROVED
UNDERGROUND STRUCTURES

B.M. 41-019
ELEV. 236.056m

SUPV. U/G STRUCTURES COMMITTEE DATE

NOTE:
LOCATION OF UNDERGROUND STRUCTURES AS SHOWN ARE BASED ON THE BEST INFORMATION AVAILABLE BUT NO GUARANTEE IS GIVEN THAT ALL EXISTING UTILITIES ARE SHOWN OR THAT THE GIVEN LOCATIONS ARE EXACT. CONFIRMATION OF EXISTENCE AND EXACT LOCATION OF ALL SERVICES MUST BE OBTAINED FROM THE INDIVIDUAL UTILITIES BEFORE PROCEEDING WITH CONSTRUCTION.

NO.	REVISIONS	DATE	BY



Stantec Consulting Ltd.

905 Waverley Street, Winnipeg, Manitoba
Tel 204-489-5900 Fax 204-453-9012

DESIGNED BY	J.K.H.	CHECKED BY	W.A.B.
DRAWN BY	K.R.	APPROVED BY	H.A.K.
HOR. SCALE:	1:500	RELEASED FOR CONSTRUCTION:	
VERTICAL:	N/A	DATE	2011.10.03

ENGINEER'S SEAL

CONSULTANT DRAWING NO.
C-124



THE CITY OF WINNIPEG
WATER AND WASTE DEPARTMENT

**2011 SEWER RENEWALS
BY CIPP LINING - CONTRACT 21
PINE VALLEY DRIVE**

IST MH W. OF VARDON PL. TO
IST MH N. OF BRAID PL.

SHEET	OF	
27	119	
CAD FILE DRAWING NUMBER I3220c-116-766.dwg		
CITY DRAWING NUMBER 9793		

\\CD1201-F02\work_group\1112\active\111213220\drawing\402_design\sheet_files\13220c-116-766.dwg
 Date: 2011-12-19 3:34pm Login: Ammeter, Wes