

**SEWER JUNCTION INFORMATION
FOR SEWER ID MA20003180**

REFERENCE—METERS NORTH OF MANHOLE MH20002900

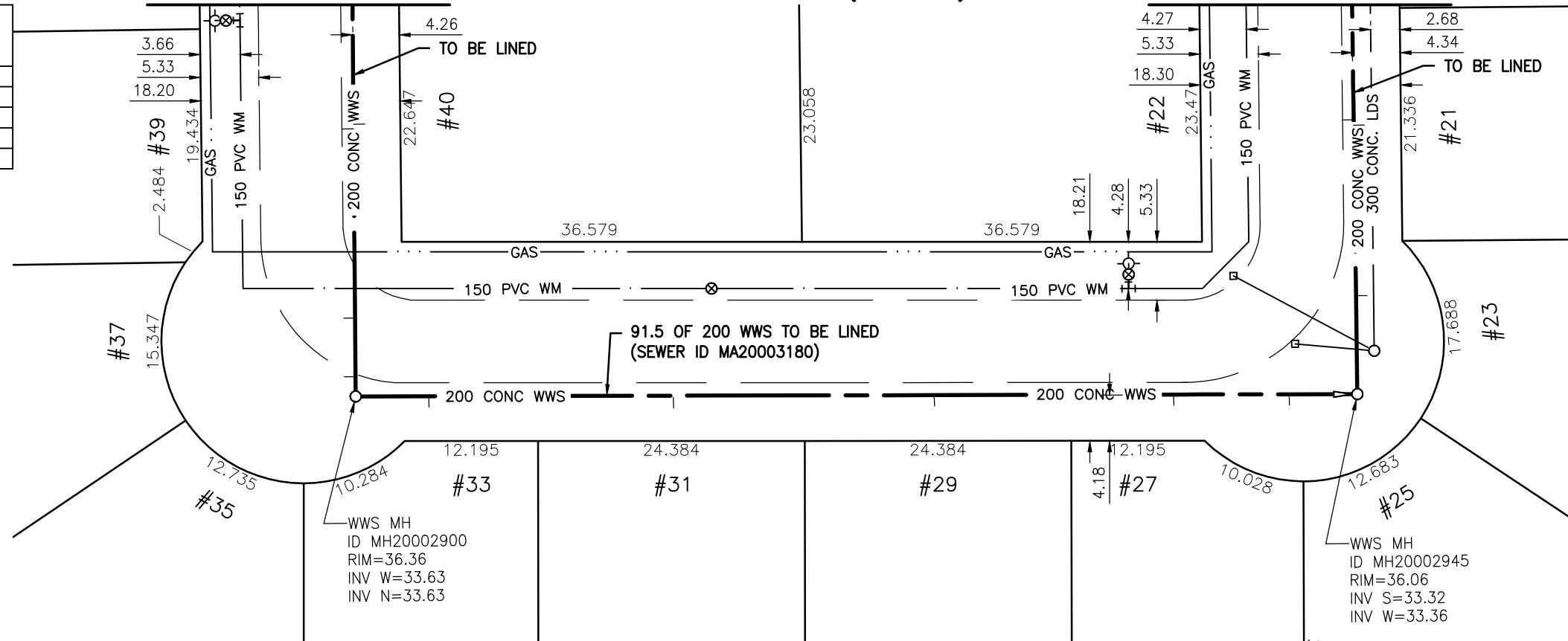
DIST. FROM REF. MANHOLE	JUNCTION DIA.	CLOCK REF.	SERVICE TYPE	DESCRIPTION
6.7	150	02	JN	-
29.0	150	03	CN	-
52.8	150	02	JN	LIVE
74.7	150	02	CX	CRACK
85.2	150	02	CN	LIVE

ALL JUNCTION INFORMATION
BASED ON CCTV INSPECTION

FOR CONTINUATION
SEE DRAWING 9799

CARLYLE BAY (E. LEG)

FOR CONTINUATION
SEE DRAWING 9801



WARNING

IF POWER EQUIPMENT OR EXPLOSIVES ARE TO BE USED FOR EXCAVATION ON THIS PROJECT THE CONTRACTOR MUST:

- 1) NOTIFY THE GAS COMPANY OF THE PROPOSED LOCATION OF EXCAVATION.
 - 2) TAKE PRECAUTION TO AVOID DAMAGE TO GAS COMPANY INSTALLATIONS.
- SEE PROVINCIAL REGULATION 140/92 FOR DETAILS

METRIC

WHOLE NUMBERS INDICATE MILLIMETRES
DECIMALIZED NUMBERS INDICATE METRES

BENCH MARK: 83R466 — N.E. Cor. Westwood Dr. & N. Leg of Sandburg Bay, Tblt. on top of 0.05 m dia x 2.4 m iron pipe, 7.4 m W. of W. wall & 9.6 m S. of S. wall of attached garage on W. side of No. 1 Sandburg Bay., or 19.3 m E. of W.L. Westwood Dr. & 3.2 m S. of N.L. Sandburg Bay.



BID OPPORTUNITY 927-2011

**LOCATION APPROVED
UNDERGROUND STRUCTURES**

B.M. 41-034 ELEV. 236.265m	
SUPV. U/G STRUCTURES COMMITTEE	DATE
NOTE: LOCATION OF UNDERGROUND STRUCTURES AS SHOWN ARE BASED ON THE BEST INFORMATION AVAILABLE BUT NO GUARANTEE IS GIVEN THAT ALL EXISTING UTILITIES ARE SHOWN OR THAT THE GIVEN LOCATIONS ARE EXACT. CONFIRMATION OF EXISTENCE AND EXACT LOCATION OF ALL SERVICES MUST BE OBTAINED FROM THE INDIVIDUAL UTILITIES BEFORE PROCEEDING WITH CONSTRUCTION.	
NO.	REVISIONS
	DATE BY
	DATE 2011.10.03



Stantec Consulting Ltd.

905 Waverley Street, Winnipeg, Manitoba
Tel 204-489-5900 Fax 204-453-9012

DESIGNED BY	J.K.H.	CHECKED BY	W.A.B.
DRAWN BY	K.R.	APPROVED BY	H.A.K.
HOR. SCALE:	1:500	RELEASED FOR CONSTRUCTION:	
VERTICAL:	N/A	DATE	

ENGINEER'S SEAL

CONSULTANT DRAWING NO.
C-131



**THE CITY OF WINNIPEG
WATER AND WASTE DEPARTMENT**

**2011 SEWER RENEWALS
BY CIPP LINING - CONTRACT 21
CARLYLE BAY (E. LEG)**

**MH AT CARLYLE BY. (S. LEG) TO
MH AT CARLYLE BY. (N. LEG)**

SHEET	OF
34	119
CAD FILE DRAWING NUMBER 13220c-116-766.dwg	
CITY DRAWING NUMBER 9800	

\\CD1201-F02\work_group\1112\active\111213220\drawing\402_design\sheet_files\13220c-116-766.dwg
 Date: 2011-12-19 3:32pm Login: Ammeter, Wes