

**SEWER JUNCTION INFORMATION  
FOR SEWER ID MA20003239**

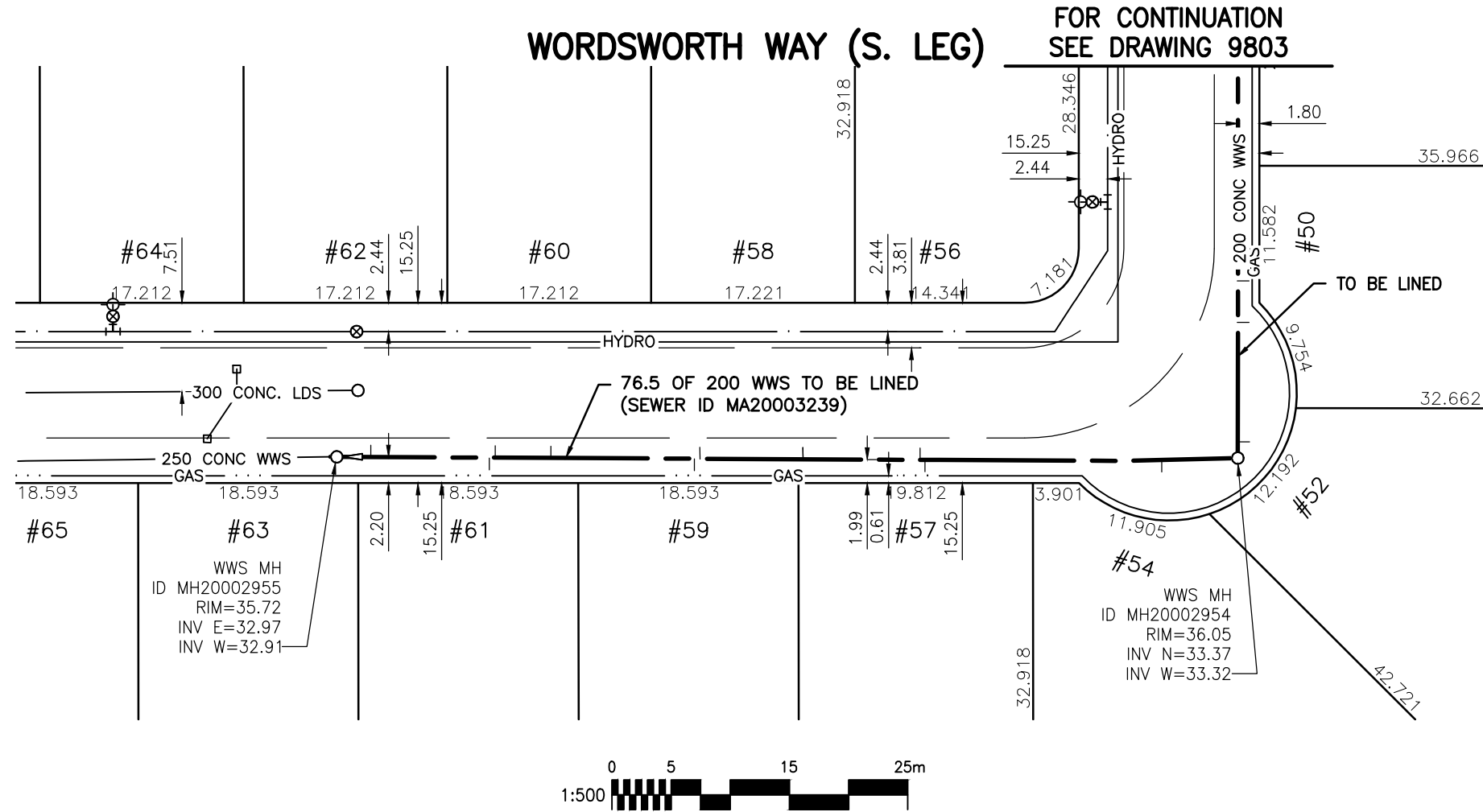
REFERENCE-METERS EAST OF MANHOLE MH20002955

DIST. FROM REF. MANHOLE	JUNCTION DIA.	CLOCK REF.	SERVICE TYPE	DESCRIPTION
2.8	150	10	CNI	LIVE
12.9	150	02	CN	-
13.4	150	09	CN	-
18.1	150	08	CN	-
30.3	150	03	CN	-
30.7	150	09	CN	-
39.4	150	10	CN	-
49.3	150	10	CN	-
49.7	150	02	CN	-

REFERENCE-METERS WEST OF MANHOLE MH20002954

DIST. FROM REF. MANHOLE	JUNCTION DIA.	CLOCK REF.	SERVICE TYPE	DESCRIPTION
6.3	150	09	CXI	SSM IN ADJ. SEWER

ALL JUNCTION INFORMATION  
BASED ON CCTV INSPECTION



**WARNING**

IF POWER EQUIPMENT OR EXPLOSIVES ARE TO BE USED FOR EXCAVATION ON THIS PROJECT THE CONTRACTOR MUST:

- 1) NOTIFY THE GAS COMPANY OF THE PROPOSED LOCATION OF EXCAVATION.
- 2) TAKE PRECAUTION TO AVOID DAMAGE TO GAS COMPANY INSTALLATIONS.

SEE PROVINCIAL REGULATION 140/92 FOR DETAILS

**METRIC**

WHOLE NUMBERS INDICATE MILLIMETRES  
DECIMALIZED NUMBERS INDICATE METRES

BENCH MARK: S.W. Cor. Browning Blvd. & Pinehurst Cres., 19 mm dia. x 6.1 m I.B. in valve box, 0.3 m N. of S.L Browning Blvd. & 0.3 m W. of W.L. Pinehurst Cres.



Certificate of Authorization

Stantec Consulting Ltd.

No. 1301 Date: \_\_\_\_\_

**BID OPPORTUNITY 927-2011**

**LOCATION APPROVED UNDERGROUND STRUCTURES**

SUPV. U/G STRUCTURES COMMITTEE DATE

**NOTE:**  
LOCATION OF UNDERGROUND STRUCTURES AS SHOWN ARE BASED ON THE BEST INFORMATION AVAILABLE BUT NO GUARANTEE IS GIVEN THAT ALL EXISTING UTILITIES ARE SHOWN OR THAT THE GIVEN LOCATIONS ARE EXACT. CONFIRMATION OF EXISTENCE AND EXACT LOCATION OF ALL SERVICES MUST BE OBTAINED FROM THE INDIVIDUAL UTILITIES BEFORE PROCEEDING WITH CONSTRUCTION.

B.M.	41-019		
ELEV.	236.056m		
NO.	REVISIONS	DATE	BY



**Stantec Consulting Ltd.**

905 Waverley Street, Winnipeg, Manitoba  
Tel 204-489-5900 Fax 204-453-9012

DESIGNED BY	J.K.H.	CHECKED BY	W.A.B.
DRAWN BY	K.R.	APPROVED BY	H.A.K.
HOR. SCALE:	1:500	RELEASED FOR CONSTRUCTION:	
VERTICAL:	N/A	DATE	2011.10.04

ENGINEER'S SEAL

CONSULTANT DRAWING NO.  
**C-133**



**THE CITY OF WINNIPEG**

**WATER AND WASTE DEPARTMENT**

**2011 SEWER RENEWALS  
BY CIPP LINING - CONTRACT 21  
WORDSWORTH WAY (S. LEG)**

**MH AT WORDSWORTH WY. (E. LEG) (PL) TO  
1ST MH W. OF WORDSWORTH WY. (E. LEG)**

SHEET	OF
<b>36</b>	<b>119</b>
CAD FILE DRAWING NUMBER I3220c-116-766.dwg	
CITY DRAWING NUMBER <b>9802</b>	