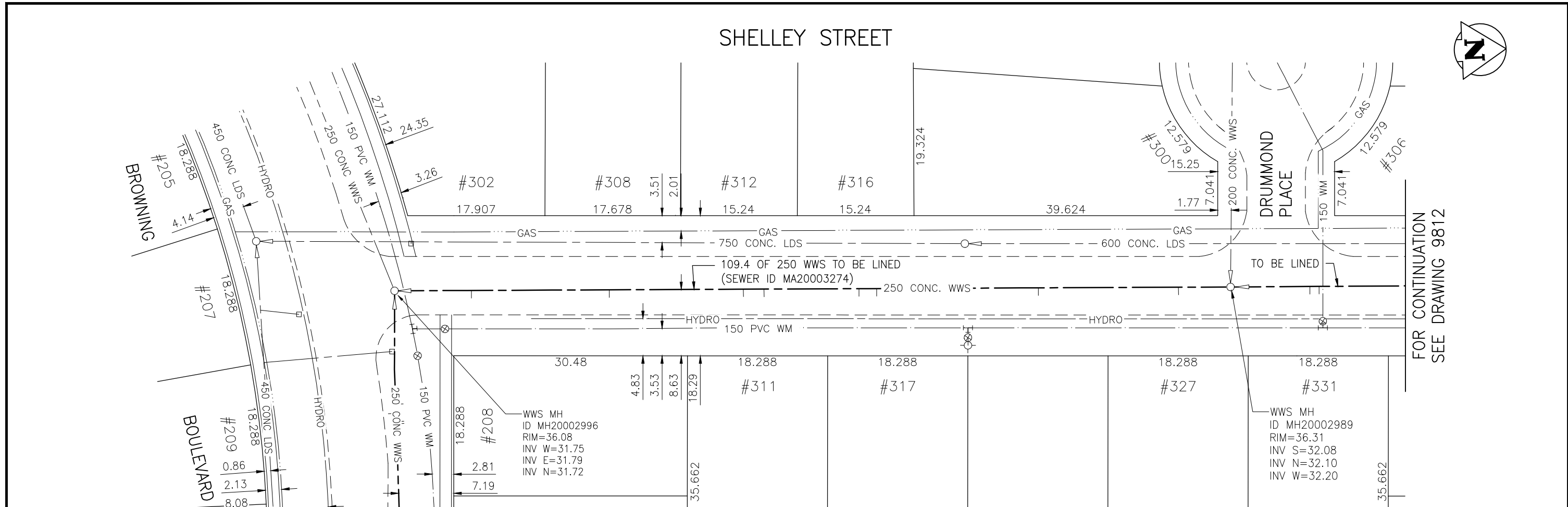


\\CD1201-F02\work_group\1112\active\111213220\drawing\402_design\sheet_files\13220c-140-766.dwg
Date: 2011-12-19 1:58pm Login: Ammeter, Wes



FOR CONTINUATION
SEE DRAWING 9809

FOR CONTINUATION
SEE DRAWING 9812

WARNING

IF POWER EQUIPMENT OR EXPLOSIVES ARE TO BE USED FOR EXCAVATION ON THIS PROJECT THE CONTRACTOR MUST:

- 1) NOTIFY THE GAS COMPANY OF THE PROPOSED LOCATION OF EXCAVATION.
- 2) TAKE PRECAUTION TO AVOID DAMAGE TO GAS COMPANY INSTALLATIONS.

SEE PROVINCIAL REGULATION 140/92 FOR DETAILS

METRIC

WHOLE NUMBERS INDICATE MILLIMETRES
DECIMALIZED NUMBERS INDICATE METRES

BENCH MARK: S.W. Cor. Browning Blvd. & Pinehurst Cres., 19 mm dia. x 6.1 m I.B. in valve box, 0.3 m N. of S.L. Browning Blvd. & 0.3 m W. of W.L. Pinehurst Cres.



**SEWER JUNCTION INFORMATION
FOR SEWER ID MA20003274**

REFERENCE—METERS SOUTH OF MANHOLE MH20002989

DIST. FROM REF. MANHOLE	JUNCTION DIA.	CLOCK REF.	SERVICE TYPE	DESCRIPTION
6.8	100	12	CN	LIVE
25.1	100	12	CN	—
46.2	100	12	CN	LIVE
48.3	100	11	CNI	—
60.9	100	10	CN	LIVE
63.6	100	12	CN	—
81.1	100	12	CN	LIVE
99.1	100	12	CN	LIVE

ALL JUNCTION INFORMATION
BASED ON CCTV INSPECTION



Certificate of Authorization

Stantec Consulting Ltd.

No. 1301 Date: _____

BID OPPORTUNITY 927-2011

**LOCATION APPROVED
UNDERGROUND STRUCTURES**

B.M. 41-019
ELEV. 236.056m

SUPV. U/G STRUCTURES COMMITTEE DATE

NOTE:
LOCATION OF UNDERGROUND STRUCTURES AS SHOWN ARE BASED ON THE BEST INFORMATION AVAILABLE BUT NO GUARANTEE IS GIVEN THAT ALL EXISTING UTILITIES ARE SHOWN OR THAT THE GIVEN LOCATIONS ARE EXACT. CONFIRMATION OF EXISTENCE AND EXACT LOCATION OF ALL SERVICES MUST BE OBTAINED FROM THE INDIVIDUAL UTILITIES BEFORE PROCEEDING WITH CONSTRUCTION.

NO.	REVISIONS	DATE	BY



Stantec Consulting Ltd.

905 Waverley Street, Winnipeg, Manitoba
Tel 204-489-5900 Fax 204-453-9012

DESIGNED BY	J.K.H.	CHECKED BY	W.A.B.
DRAWN BY	K.R.	APPROVED BY	H.A.K.
HOR. SCALE:	1:500	RELEASED FOR CONSTRUCTION:	
VERTICAL:	N/A	DATE	2011.10.04

ENGINEER'S SEAL

CONSULTANT DRAWING NO.
C-142



THE CITY OF WINNIPEG

WATER AND WASTE DEPARTMENT

2011 SEWER RENEWALS
BY CIPP LINING - CONTRACT 21
SHELLEY STREET

MH AT BROWNING BV. (CL) TO
MH AT DRUMMOND PL. (CL)

SHEET OF	45 OF 119
CAD FILE DRAWING NUMBER	13220c-140-766.dwg
CITY DRAWING NUMBER	9811