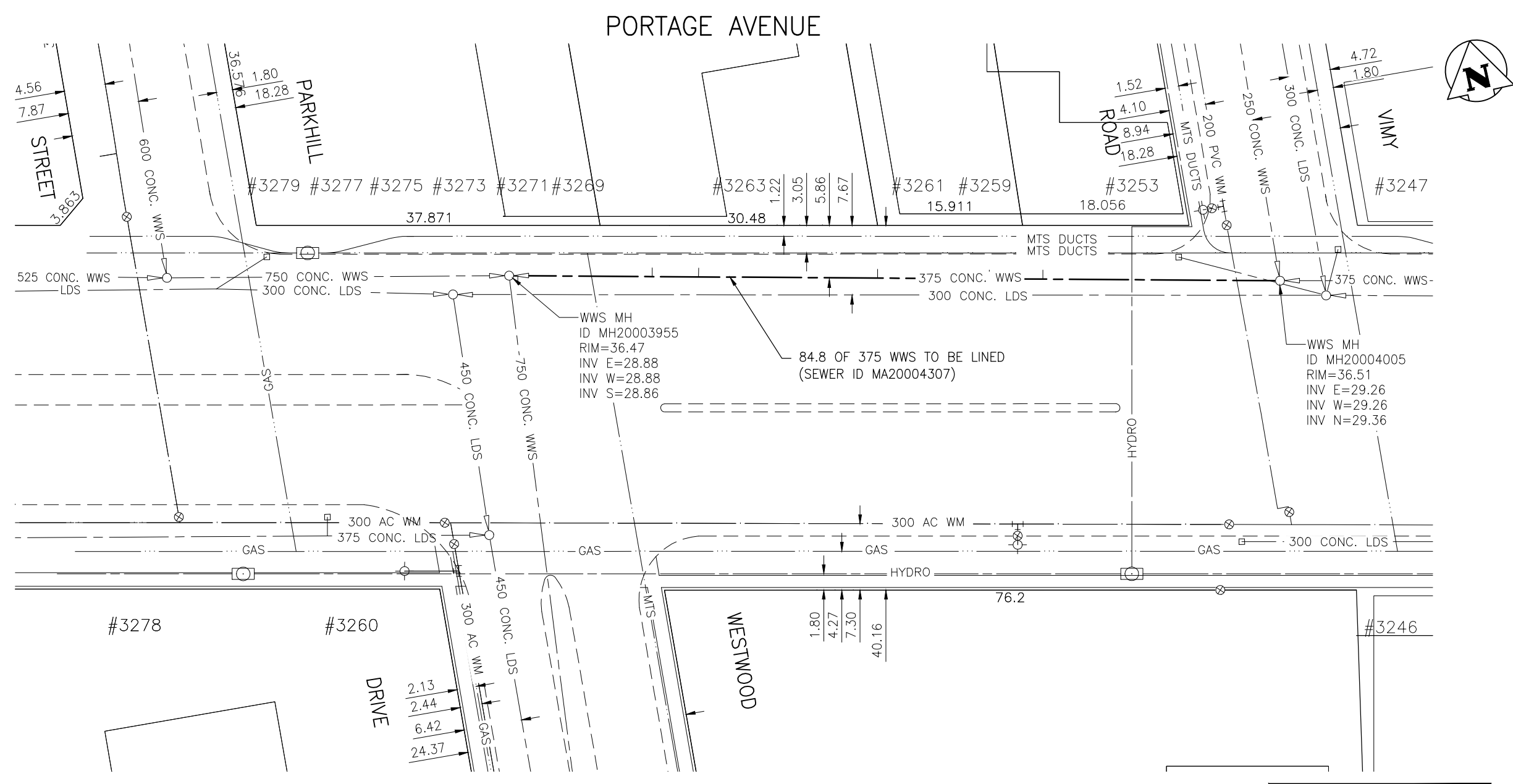


**SEWER JUNCTION INFORMATION  
FOR SEWER ID MA20004307**

REFERENCE—METERS WEST OF MANHOLE MH20004005

DIST. FROM REF. MANHOLE	JUNCTION DIA.	CLOCK REF.	SERVICE TYPE	DESCRIPTION
26.1	150	01	CX	LIVE. SSL IN ADJ. SEWER
32.0	150	02	CNI	-
44.3	150	01	CN	LIVE
64.0	150	02	CNI	LIVE
69.1	150	01	CN	LIVE
83.9	150	12	CN	LIVE

ALL JUNCTION INFORMATION  
BASED ON CCTV INSPECTION



**WARNING**

IF POWER EQUIPMENT OR EXPLOSIVES ARE TO BE USED FOR EXCAVATION ON THIS PROJECT THE CONTRACTOR MUST:

- 1) NOTIFY THE GAS COMPANY OF THE PROPOSED LOCATION OF EXCAVATION.
- 2) TAKE PRECAUTION TO AVOID DAMAGE TO GAS COMPANY INSTALLATIONS.

SEE PROVINCIAL REGULATION 140/92 FOR DETAILS

**METRIC**

WHOLE NUMBERS INDICATE MILLIMETRES  
DECIMALIZED NUMBERS INDICATE METRES

BENCH MARK: 83R492 - In median of Portage Ave. & Parkhill St., Tblt. on top of 0.05 m dia. x 2.4 m iron pipe in Valve Box, 1 m N. of S. curb of median of Portage Ave. & 4.0 m E. of C.L. Conc. Pav't. of Parkhill St. produced from the N., or 18 m W. of W.L. of Westwood Dr. & 18.8 m S. of N.L. of Portage Ave.



**APEGM**  
Certificate of Authorization  
Stantec Consulting Ltd.  
No. 1301 Date: \_\_\_\_\_

BID OPPORTUNITY 927-2011

**LOCATION APPROVED  
UNDERGROUND STRUCTURES**

NO.	REVISIONS	DATE	BY

SUPV. U/G STRUCTURES COMMITTEE DATE

**NOTE:**  
LOCATION OF UNDERGROUND STRUCTURES AS SHOWN ARE BASED ON THE BEST INFORMATION AVAILABLE BUT NO GUARANTEE IS GIVEN THAT ALL EXISTING UTILITIES ARE SHOWN OR THAT THE GIVEN LOCATIONS ARE EXACT. CONFIRMATION OF EXISTENCE AND EXACT LOCATION OF ALL SERVICES MUST BE OBTAINED FROM THE INDIVIDUAL UTILITIES BEFORE PROCEEDING WITH CONSTRUCTION.

B.M. 41-042  
ELEV. 236.793m



**Stantec Consulting Ltd.**

905 Waverley Street, Winnipeg, Manitoba  
Tel 204-489-5900 Fax 204-453-9012

DESIGNED BY	J.K.H.	CHECKED BY	W.A.B.
DRAWN BY	K.R.	APPROVED BY	H.A.K.
HOR. SCALE:	1:500	RELEASED FOR CONSTRUCTION:	
VERTICAL:	N/A	DATE	2011.10.04

ENGINEER'S SEAL

CONSULTANT DRAWING NO.  
C-160



**THE CITY OF WINNIPEG  
WATER AND WASTE DEPARTMENT**

2011 SEWER RENEWALS  
BY CIPP LINING - CONTRACT 21  
PORTAGE AVENUE (N. OF CL)

MH AT VIMY ROAD TO  
MH AT WESTWOOD DR.

SHEET OF	63 OF 119
CAD FILE DRAWING NUMBER	13220c-140-766.dwg
CITY DRAWING NUMBER	9829

\\CD1201-F02\work\_group\1112\active\111213220\drawing\402\_design\sheet\_files\13220c-140-766.dwg  
 Date: 2011-12-19 2:31pm Login: Ammeter, Wes