

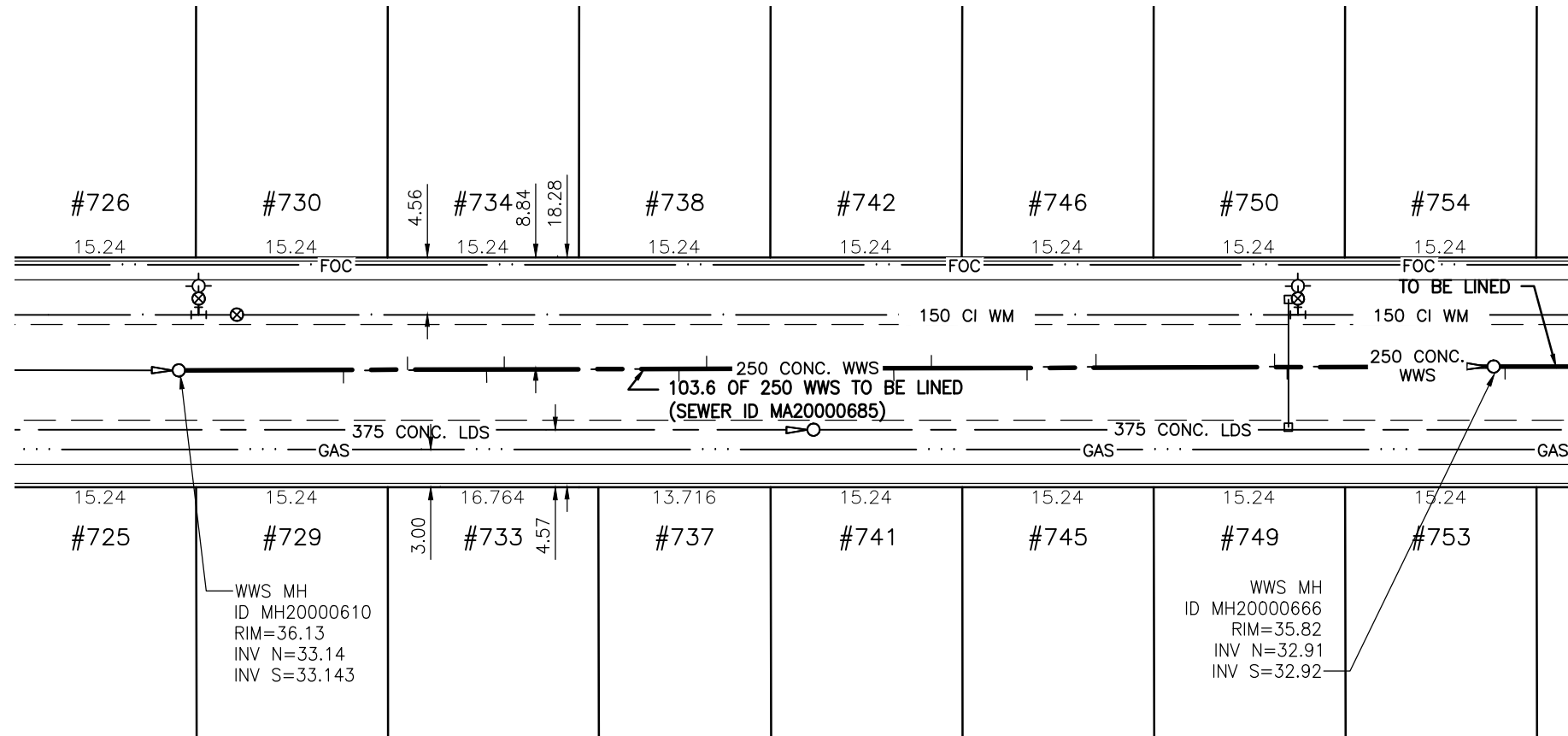
**SEWER JUNCTION INFORMATION
FOR SEWER ID MA20000685**

REFERENCE—METERS NORTH OF MANHOLE MH20000610

DIST. FROM REF. MANHOLE	JUNCTION DIA.	CLOCK REF.	SERVICE TYPE	DESCRIPTION
13.0	150	02	CNI	LIVE
18.2	150	10	CNI	LIVE
24.5	150	02	CXI	LIVE. CC IN ADJ. SEWER
25.9	150	10	CNI	LIVE
39.7	150	03	CNI	LIVE
42.1	150	09	CXI	LIVE. FC IN ADJ. SEWER
56.9	150	02	CX	LIVE. CC IN ADJ. SEWER
59.9	150	11	CNI	—
67.5	150	03	CX	LIVE. SSM IN ADJ. SEWER
72.9	150	09	CNI	LIVE
87.1	150	09	CXI	LIVE. CC IN ADJ. SEWER
88.2	150	02	CX	SSM IN ADJ. SEWER
98.2	150	09	CNI	LIVE

ALL JUNCTION INFORMATION
BASED ON CCTV INSPECTION

PARKDALE STREET



FOR CONTINUATION
SEE DRAWING 9833



WARNING

IF POWER EQUIPMENT OR EXPLOSIVES ARE TO BE USED FOR EXCAVATION ON THIS PROJECT THE CONTRACTOR MUST:

- 1) NOTIFY THE GAS COMPANY OF THE PROPOSED LOCATION OF EXCAVATION.
- 2) TAKE PRECAUTION TO AVOID DAMAGE TO GAS COMPANY INSTALLATIONS.

SEE PROVINCIAL REGULATION 140/92 FOR DETAILS

METRIC

WHOLE NUMBERS INDICATE MILLIMETRES
DECIMALIZED NUMBERS INDICATE METRES

BENCH MARK: S.E. Cor. Ness Ave. & Muriel St. Tblt. in most Nly. Conc. foundation of Ness Junior High School, 2.5 m W. & 0.1 m below brick of N.E. Cor. of school.



Certificate of Authorization

Stantec Consulting Ltd.

No. 1301 Date: _____

BID OPPORTUNITY 927-2011

**LOCATION APPROVED
UNDERGROUND STRUCTURES**

SUPV. U/G STRUCTURES COMMITTEE DATE

NOTE:
LOCATION OF UNDERGROUND STRUCTURES AS SHOWN ARE BASED ON THE BEST INFORMATION AVAILABLE BUT NO GUARANTEE IS GIVEN THAT ALL EXISTING UTILITIES ARE SHOWN OR THAT THE GIVEN LOCATIONS ARE EXACT. CONFIRMATION OF EXISTENCE AND EXACT LOCATION OF ALL SERVICES MUST BE OBTAINED FROM THE INDIVIDUAL UTILITIES BEFORE PROCEEDING WITH CONSTRUCTION.

NO.	REVISIONS	DATE	BY



Stantec Consulting Ltd.

905 Waverley Street, Winnipeg, Manitoba
Tel 204-489-5900 Fax 204-453-9012

DESIGNED BY	J.K.H.	CHECKED BY	W.A.B.
DRAWN BY	K.R.	APPROVED BY	H.A.K.
HOR. SCALE:	1:500	RELEASED FOR CONSTRUCTION:	
VERTICAL:	N/A	DATE	
DATE	2011.10.05	DATE	

ENGINEER'S SEAL

CONSULTANT DRAWING NO.
C-163



**THE CITY OF WINNIPEG
WATER AND WASTE DEPARTMENT**

**2011 SEWER RENEWALS
BY CIPP LINING - CONTRACT 21
PARKDALE STREET**

**2ND MH S. OF NESS AV. (CL) TO
1ST MH S. OF NESS AV. (CL)**

SHEET OF	66 OF 119
CAD FILE DRAWING NUMBER	13220c-161-766.dwg
CITY DRAWING NUMBER	9832

\\CD1201-F02\work_group\1112\active\111213220\drawing\402_design\sheet_files\13220c-161-766.dwg
Date: 2011-12-19 3:45pm Login: Ammeter, Wes