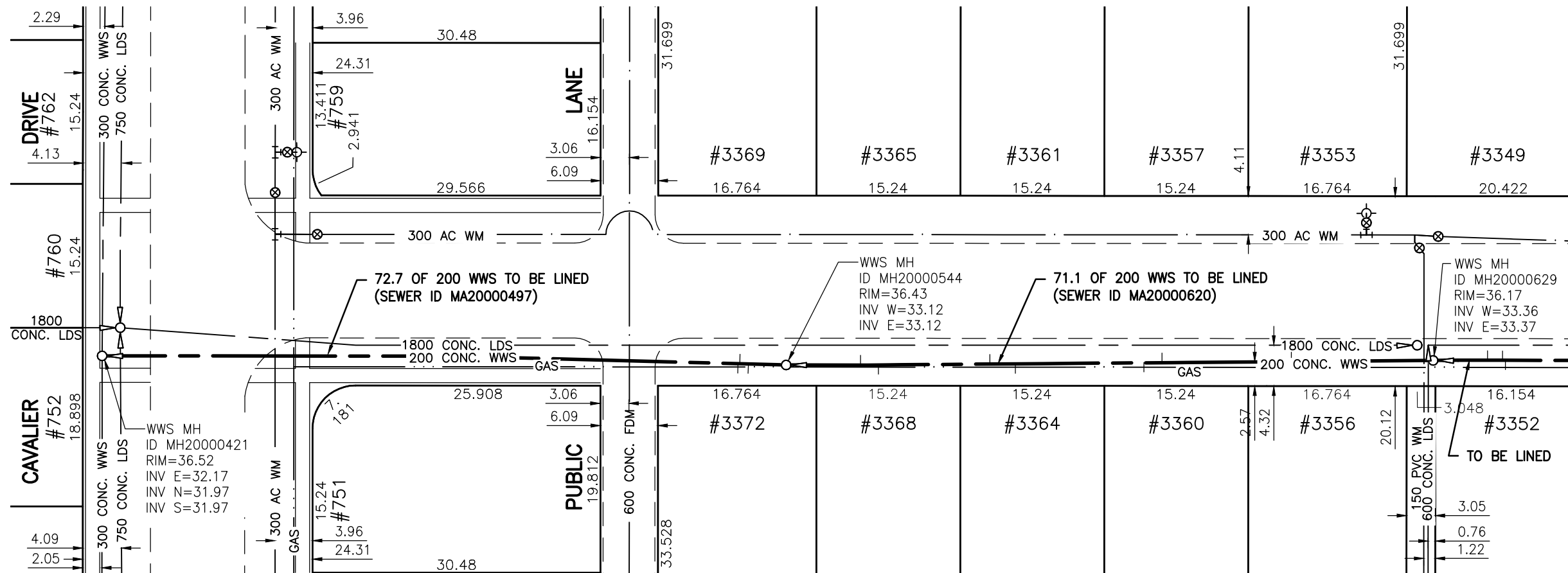


\\CD1201-F02\work_group\1112\active\111213220\drawing\402_design\sheet_files\13220c-161-766.dwg
 Date: 2011-12-19 3:48pm Login: Ammeter, Wes

NESS AVENUE



FOR CONTINUATION
 SEE DRAWING 9843



WARNING

IF POWER EQUIPMENT OR EXPLOSIVES ARE TO BE USED FOR EXCAVATION ON THIS PROJECT THE CONTRACTOR MUST:

- 1) NOTIFY THE GAS COMPANY OF THE PROPOSED LOCATION OF EXCAVATION.
- 2) TAKE PRECAUTION TO AVOID DAMAGE TO GAS COMPANY INSTALLATIONS.

SEE PROVINCIAL REGULATION 140/92 FOR DETAILS

METRIC

WHOLE NUMBERS INDICATE MILLIMETRES
 DECIMALIZED NUMBERS INDICATE METRES

BENCH MARK: W. side Cavalier Dr., S. of Fairlane Ave., Tblt. in E. Conc. foundation No. 664 Cavalier Dr., 2.5 m S. & 0.2 m below brick of N.E. Cor. of Dwelling.

SEWER JUNCTION INFORMATION FOR SEWER ID MA20000497

REFERENCE—METERS WEST OF MANHOLE MH20000544

DIST. FROM REF. MANHOLE	JUNCTION DIA.	CLOCK REF.	SERVICE TYPE	DESCRIPTION
4.0	150	10	JN	CAPPED
4.9	150	02	CNI	LIVE
5.1	150	09	CN	-

ALL JUNCTION INFORMATION BASED ON CCTV INSPECTION

SEWER JUNCTION INFORMATION FOR SEWER ID MA20000620

REFERENCE—METERS WEST OF MANHOLE MH20000629

DIST. FROM REF. MANHOLE	JUNCTION DIA.	CLOCK REF.	SERVICE TYPE	DESCRIPTION
13.2	150	09	CN	LIVE
15.0	150	03	CN	LIVE
28.7	150	03	CN	-
30.6	150	09	CN	LIVE
44.2	150	09	CN	LIVE
46.9	150	03	CN	-
58.7	150	09	CN	LIVE
60.6	150	03	CN	LIVE



Certificate of Authorization

Stantec Consulting Ltd.

No. 1301 Date: _____

BID OPPORTUNITY 927-2011

LOCATION APPROVED UNDERGROUND STRUCTURES

B.M.	40-026		
ELEV.	237.452m		
SUPV. U/G STRUCTURES COMMITTEE	DATE		
NO.	REVISIONS	DATE	BY

NOTE:
 LOCATION OF UNDERGROUND STRUCTURES AS SHOWN ARE BASED ON THE BEST INFORMATION AVAILABLE BUT NO GUARANTEE IS GIVEN THAT ALL EXISTING UTILITIES ARE SHOWN OR THAT THE GIVEN LOCATIONS ARE EXACT. CONFIRMATION OF EXISTENCE AND EXACT LOCATION OF ALL SERVICES MUST BE OBTAINED FROM THE INDIVIDUAL UTILITIES BEFORE PROCEEDING WITH CONSTRUCTION.



Stantec Consulting Ltd.

905 Waverley Street, Winnipeg, Manitoba
 Tel 204-489-5900 Fax 204-453-9012

DESIGNED BY	J.K.H.	CHECKED BY	W.A.B.
DRAWN BY	K.R.	APPROVED BY	H.A.K.
HOR. SCALE:	1:500	RELEASED FOR CONSTRUCTION:	
VERTICAL:	N/A	DATE	2011.10.05

ENGINEER'S SEAL

CONSULTANT DRAWING NO.
C-175



THE CITY OF WINNIPEG WATER AND WASTE DEPARTMENT

2011 SEWER RENEWALS BY CIPP LINING - CONTRACT 21 NESS AVENUE

MH AT CAVALIER DR. (PL) TO
 2ND MH E. OF CAVALIER DR. (PL)

SHEET	OF
78	119
CAD FILE DRAWING NUMBER 13220c-161-766.dwg	
CITY DRAWING NUMBER 9844	