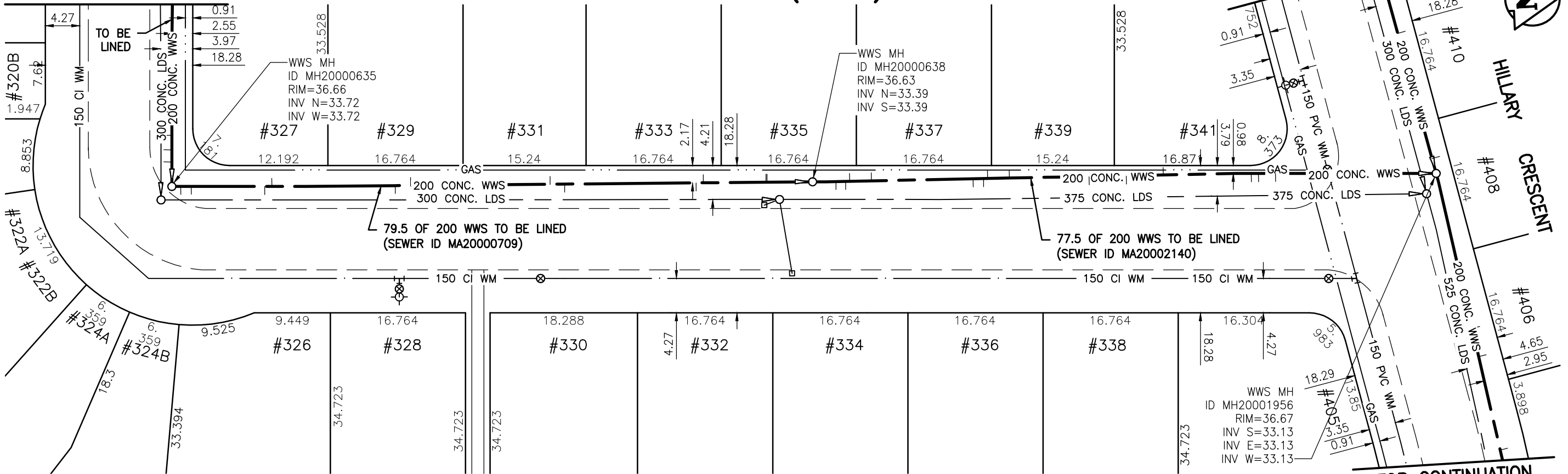


\\CD1201-F02\work\_group\1112\active\111213220\drawing\402\_design\sheet\_files\13220c-161-766.dwg  
 Date: 2011-12-19 4:06pm Login: Ammeter, Wes

FOR CONTINUATION  
SEE DRAWING 9853

### HILLARY BAY (E. LEG)

FOR CONTINUATION  
SEE DRAWING 9851



FOR CONTINUATION  
SEE DRAWING 9850



**SEWER JUNCTION INFORMATION FOR SEWER ID MA20000709**

REFERENCE—METERS SOUTH OF MANHOLE MH20000638

DIST. FROM REF. MANHOLE	JUNCTION DIA.	CLOCK REF.	SERVICE TYPE	DESCRIPTION
5.8	100	02	CNI	LIVE

**SEWER JUNCTION INFORMATION FOR SEWER ID MA20000709**

REFERENCE—METERS NORTH OF MANHOLE MH20000638

DIST. FROM REF. MANHOLE	JUNCTION DIA.	CLOCK REF.	SERVICE TYPE	DESCRIPTION
1.1	100	03	JN	LIVE
2.4	100	03	JN	-
11.5	100	03	JN	LIVE
12.4	100	09	JN	-
27.7	100	03	JN	LIVE
29.6	100	09	JN	-
46.9	100	09	JN	LIVE
48.7	100	03	JN	LIVE
65.0	100	03	JN	LIVE
65.9	100	09	JN	-
73.8	100	10	CNI	LIVE

**SEWER JUNCTION INFORMATION FOR SEWER ID MA20002140**

REFERENCE—METERS NORTH OF MANHOLE MH20000638

DIST. FROM REF. MANHOLE	JUNCTION DIA.	CLOCK REF.	SERVICE TYPE	DESCRIPTION
2.9	100	03	JN	CAPPED
4.1	100	03	JN	-
4.6	100	09	JN	CAPPED
7.3	100	09	JN	-
19.9	100	03	JN	-
21.2	100	02	JN	LIVE
21.7	100	09	JN	-
24.3	100	10	CNI	LIVE
34.3	100	03	JN	-
38.9	100	02	JN	LIVE
43.5	100	09	JN	LIVE

REFERENCE—METERS NORTH OF MANHOLE MH20000638

DIST. FROM REF. MANHOLE	JUNCTION DIA.	CLOCK REF.	SERVICE TYPE	DESCRIPTION
54.4	100	02	JN	CAPPED
55.3	100	02	CN	-
57.4	100	03	CN	-

ALL JUNCTION INFORMATION BASED ON CCTV INSPECTION

## WARNING

IF POWER EQUIPMENT OR EXPLOSIVES ARE TO BE USED FOR EXCAVATION ON THIS PROJECT THE CONTRACTOR MUST:

- 1) NOTIFY THE GAS COMPANY OF THE PROPOSED LOCATION OF EXCAVATION.
- 2) TAKE PRECAUTION TO AVOID DAMAGE TO GAS COMPANY INSTALLATIONS.

SEE PROVINCIAL REGULATION 140/92 FOR DETAILS

## METRIC

WHOLE NUMBERS INDICATE MILLIMETRES  
DECIMALIZED NUMBERS INDICATE METRES

BENCH MARK: W. side Cavalier Dr., S. of Fairlane Ave., Tblt. in E. Conc. foundation No. 664 Cavalier Dr., 2.5 m S. & 0.2 m below brick of N.E. Cor. of Dwelling.

Certificate of Authorization  
Stantec Consulting Ltd.  
No. 1301 Date: \_\_\_\_\_

BID OPPORTUNITY 927-2011

LOCATION APPROVED  
UNDERGROUND STRUCTURES

B.M. 40-026  
ELEV. 237.452m

SUPV. U/G STRUCTURES COMMITTEE DATE

NOTE:  
LOCATION OF UNDERGROUND STRUCTURES AS SHOWN ARE BASED ON THE BEST INFORMATION AVAILABLE BUT NO GUARANTEE IS GIVEN THAT ALL EXISTING UTILITIES ARE SHOWN OR THAT THE GIVEN LOCATIONS ARE EXACT. CONFIRMATION OF EXISTENCE AND EXACT LOCATION OF ALL SERVICES MUST BE OBTAINED FROM THE INDIVIDUAL UTILITIES BEFORE PROCEEDING WITH CONSTRUCTION.

NO.	REVISIONS	DATE	BY



**Stantec Consulting Ltd.**

905 Waverley Street, Winnipeg, Manitoba  
Tel 204-489-5900 Fax 204-453-9012

DESIGNED BY	J.K.H.	CHECKED BY	W.A.B.
DRAWN BY	K.R.	APPROVED BY	H.A.K.
HOR. SCALE:	1:500	RELEASED FOR CONSTRUCTION:	
VERTICAL:	N/A	DATE	2011.10.05

ENGINEER'S SEAL

CONSULTANT DRAWING NO.  
**C-185**



**THE CITY OF WINNIPEG**  
WATER AND WASTE DEPARTMENT

**2011 SEWER RENEWALS**  
BY CIPP LINING - CONTRACT 21  
**HILLARY BAY (E. LEG)**

MH AT HILLARY BY. (S. LEG) (PL) TO  
MH AT HILLARY CR. (N. LEG) (PL)

SHEET OF	<b>88</b> OF <b>119</b>
CAD FILE DRAWING NUMBER	13220c-161-766.dwg
CITY DRAWING NUMBER	<b>9854</b>