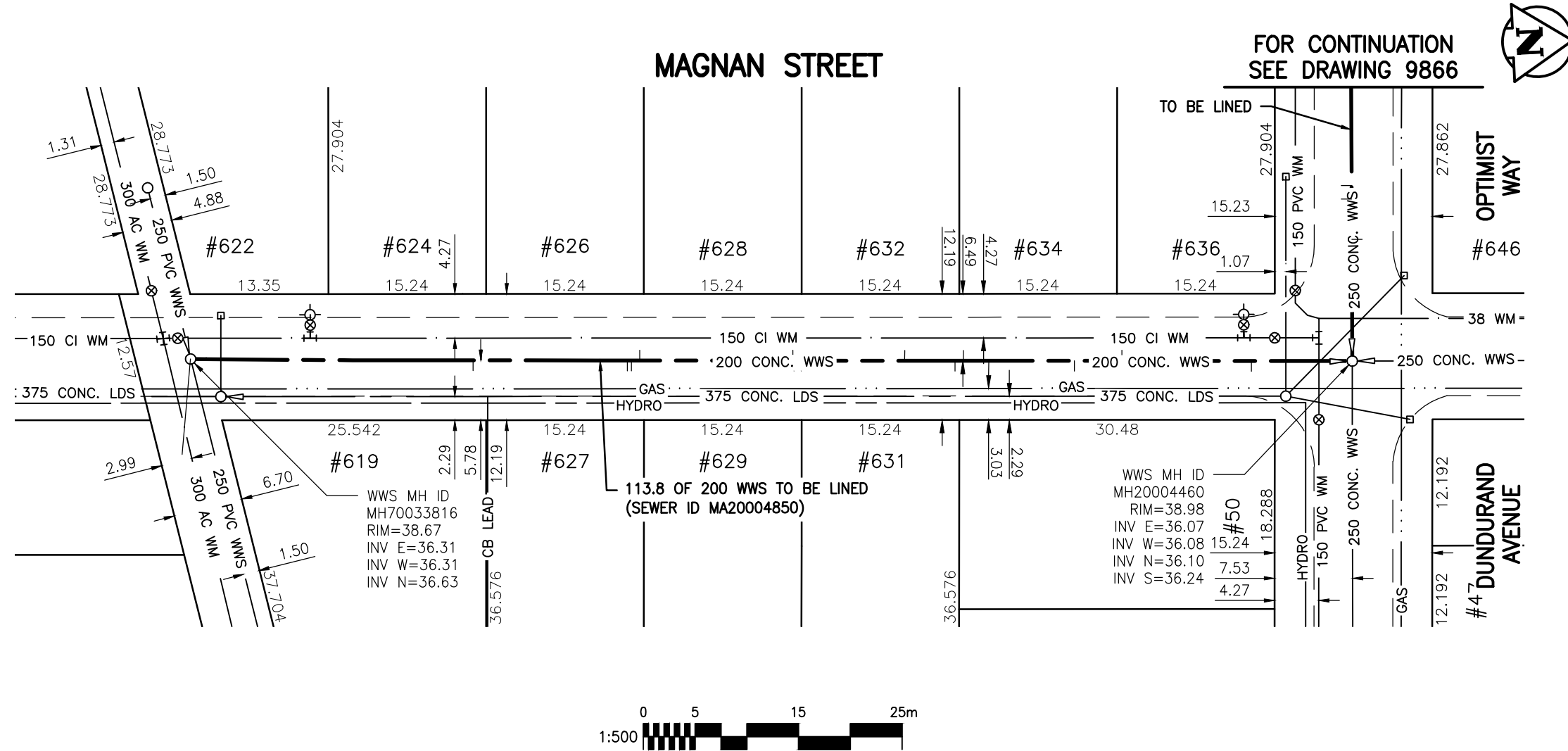


**SEWER JUNCTION INFORMATION
FOR SEWER ID MA20004850**

REFERENCE—METERS NORTH OF MANHOLE MH70033816

DIST. FROM REF. MANHOLE	JUNCTION DIA.	CLOCK REF.	SERVICE TYPE	DESCRIPTION
27.3	150	02	JN	LIVE
28.1	150	10	JN	LIVE
42.2	150	02	CXI	FRACTURED
42.6	150	02	JN	-
43.4	150	10	JN	LIVE
58.2	150	10	JN	-
58.3	150	02	CNI	LIVE
59.0	150	02	JN	-
69.0	150	10	CN	LIVE
73.7	150	02	JN	LIVE
74.5	150	10	JN	-
85.4	150	02	JN	LIVE
90.0	150	10	JN	LIVE
102.5	150	02	JN	-

ALL JUNCTION INFORMATION BASED ON CCTV INSPECTION



WARNING

IF POWER EQUIPMENT OR EXPLOSIVES ARE TO BE USED FOR EXCAVATION ON THIS PROJECT THE CONTRACTOR MUST:

- 1) NOTIFY THE GAS COMPANY OF THE PROPOSED LOCATION OF EXCAVATION.
- 2) TAKE PRECAUTION TO AVOID DAMAGE TO GAS COMPANY INSTALLATIONS.

SEE PROVINCIAL REGULATION 140/92 FOR DETAILS

METRIC

WHOLE NUMBERS INDICATE MILLIMETRES
DECIMALIZED NUMBERS INDICATE METRES

BENCH MARK: 654009 (Geodetic Downs), E. side Perimeter Hwy., N. of Portage Ave., Tblt. in 7.6 m Conc. pile (See Sketch).



Certificate of Authorization

Stantec Consulting Ltd.

No. 1301 Date: _____

BID OPPORTUNITY 927-2011

**LOCATION APPROVED
UNDERGROUND STRUCTURES**

B.M.	40-004		
ELEV.	239.466m		
SUPV. U/G STRUCTURES COMMITTEE	DATE		
NOTE: LOCATION OF UNDERGROUND STRUCTURES AS SHOWN ARE BASED ON THE BEST INFORMATION AVAILABLE BUT NO GUARANTEE IS GIVEN THAT ALL EXISTING UTILITIES ARE SHOWN OR THAT THE GIVEN LOCATIONS ARE EXACT. CONFIRMATION OF EXISTENCE AND EXACT LOCATION OF ALL SERVICES MUST BE OBTAINED FROM THE INDIVIDUAL UTILITIES BEFORE PROCEEDING WITH CONSTRUCTION.			
NO.	REVISIONS	DATE	BY



Stantec Consulting Ltd.

905 Waverley Street, Winnipeg, Manitoba
Tel 204-489-5900 Fax 204-453-9012

DESIGNED BY	J.K.H.	CHECKED BY	W.A.B.
DRAWN BY	K.R.	APPROVED BY	H.A.K.
HOR. SCALE:	1:500	RELEASED FOR CONSTRUCTION:	
VERTICAL:	N/A	DATE	2011.10.07

ENGINEER'S SEAL

CONSULTANT DRAWING NO.
C-196



**THE CITY OF WINNIPEG
WATER AND WASTE DEPARTMENT**

**2011 SEWER RENEWALS
BY CIPP LINING - CONTRACT 21
MAGNAN STREET**

1ST MH S. OF DUNDURAND AV. TO
MH AT DUNDURAND AV.

SHEET	OF
99	119
CAD FILE DRAWING NUMBER I3220c-I86-766.dwg	
CITY DRAWING NUMBER 9865	

\\CD1201-F02\work_group\1112\active\111213220\drawing\402_design\sheet_files\13220c-186-766.dwg
 Date: 2011-12-19 4:45pm Login: Ammeter, Wes