

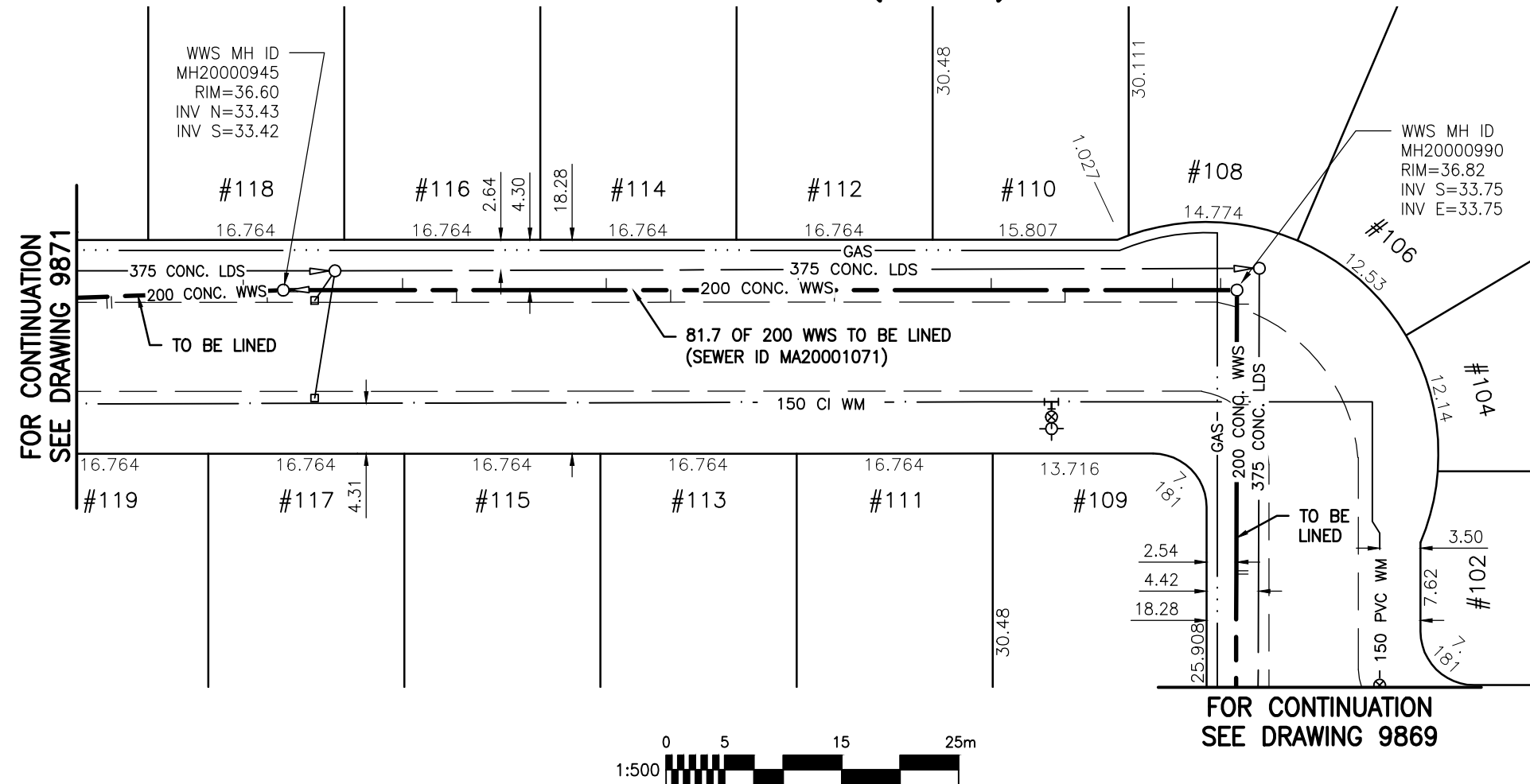
**SEWER JUNCTION INFORMATION  
FOR SEWER ID MA20001071**

REFERENCE—METERS SOUTH OF MANHOLE MH20000990

DIST. FROM REF. MANHOLE	JUNCTION DIA.	CLOCK REF.	SERVICE TYPE	DESCRIPTION
1.4	150	03	CN	-
5.5	100	02	JN	CAPPED
14.7	100	10	JN	-
21.0	100	03	JN	-
34.4	100	10	JN	LIVE
37.5	100	02	JN	LIVE
48.4	150	11	JN	LIVE
53.9	100	03	JN	LIVE
66.7	100	10	JN	-
71.3	100	02	JN	-

ALL JUNCTION INFORMATION  
BASED ON CCTV INSPECTION

**FREEMONT BAY (W. LEG)**



**WARNING**

IF POWER EQUIPMENT OR EXPLOSIVES ARE TO BE USED FOR EXCAVATION ON THIS PROJECT THE CONTRACTOR MUST:

- 1) NOTIFY THE GAS COMPANY OF THE PROPOSED LOCATION OF EXCAVATION.
- 2) TAKE PRECAUTION TO AVOID DAMAGE TO GAS COMPANY INSTALLATIONS.

SEE PROVINCIAL REGULATION 140/92 FOR DETAILS

**METRIC**

WHOLE NUMBERS INDICATE MILLIMETRES  
DECIMALIZED NUMBERS INDICATE METRES

BENCH MARK: W. side Cavalier Dr., S. of Fairlane Ave., Tblt. in E. Conc. foundation No. 664 Cavalier Dr., 2.5 m S. & 0.2 m below brick of N.E. Cor. of dwelling.



Certificate of Authorization

Stantec Consulting Ltd.

No. 1301 Date: \_\_\_\_\_

**BID OPPORTUNITY 927-2011**

**LOCATION APPROVED  
UNDERGROUND STRUCTURES**

NO.	REVISIONS	DATE	BY

SUPV. U/G STRUCTURES COMMITTEE DATE

**NOTE:**  
LOCATION OF UNDERGROUND STRUCTURES AS SHOWN ARE BASED ON THE BEST INFORMATION AVAILABLE BUT NO GUARANTEE IS GIVEN THAT ALL EXISTING UTILITIES ARE SHOWN OR THAT THE GIVEN LOCATIONS ARE EXACT. CONFIRMATION OF EXISTENCE AND EXACT LOCATION OF ALL SERVICES MUST BE OBTAINED FROM THE INDIVIDUAL UTILITIES BEFORE PROCEEDING WITH CONSTRUCTION.



**Stantec Consulting Ltd.**

905 Waverley Street, Winnipeg, Manitoba  
Tel 204-489-5900 Fax 204-453-9012

DESIGNED BY	J.K.H.	CHECKED BY	W.A.B.
DRAWN BY	K.R.	APPROVED BY	H.A.K.
HOR. SCALE:	1:500	RELEASED FOR CONSTRUCTION:	
VERTICAL:	N/A	DATE	2011.10.08

ENGINEER'S SEAL

CONSULTANT DRAWING NO.  
**C-201**



**THE CITY OF WINNIPEG  
WATER AND WASTE DEPARTMENT**

**2011 SEWER RENEWALS  
BY CIPP LINING - CONTRACT 21  
FREEMONT BAY (W. LEG)**

**MH AT FREEMONT BY. (N. LEG) (PL) TO  
1ST MH S. OF FREEMONT BY. (N. LEG) (PL)**

SHEET OF	104 OF 119
CAD FILE DRAWING NUMBER	I3220c-I86-766.dwg
CITY DRAWING NUMBER	<b>9870</b>

\\CD1201-F02\work\_group\1112\active\111213220\drawing\402\_design\sheet\_files\13220c-186-766.dwg  
Date: 2011-12-19 4:49pm Login: Ammeter, Wes