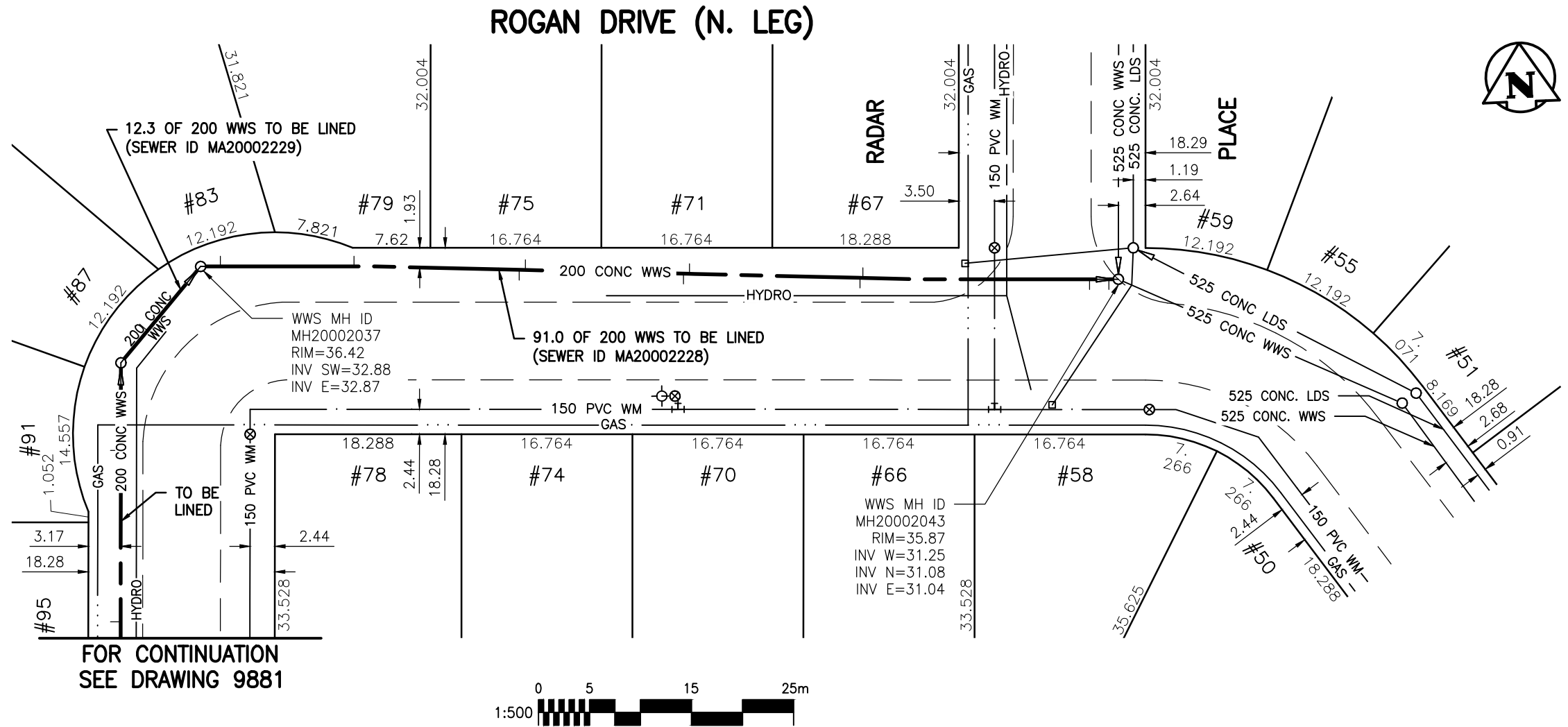


**SEWER JUNCTION INFORMATION
FOR SEWER ID MA20002228**

REFERENCE--METERS EAST OF MANHOLE MH20002037

DIST. FROM REF. MANHOLE	JUNCTION DIA.	CLOCK REF.	SERVICE TYPE	DESCRIPTION
1.9	150	10	CN	-
15.0	150	10	CN	-
31.2	150	02	CN	-
31.8	150	10	CN	LIVE
47.3	150	02	CN	-
47.9	150	09	CN	LIVE
64.6	150	02	CN	LIVE
64.9	150	10	CN	LIVE
87.1	150	02	CN	-
89.0	150	06	JN	-

ALL JUNCTION INFORMATION
BASED ON CCTV INSPECTION



FOR CONTINUATION
SEE DRAWING 9881

WARNING

IF POWER EQUIPMENT OR EXPLOSIVES ARE TO BE USED FOR EXCAVATION ON THIS PROJECT THE CONTRACTOR MUST:

- 1) NOTIFY THE GAS COMPANY OF THE PROPOSED LOCATION OF EXCAVATION.
- 2) TAKE PRECAUTION TO AVOID DAMAGE TO GAS COMPANY INSTALLATIONS.

SEE PROVINCIAL REGULATION 140/92 FOR DETAILS

METRIC

WHOLE NUMBERS INDICATE MILLIMETRES
DECIMALIZED NUMBERS INDICATE METRES

BENCH MARK: S.W. Cor. Crestview Park Dr. & Voyageur Ave., Tblt. in N. Conc. foundation No. 1028 Crestview Park Dr., 2 m W. & 0.1 m below stucco of N.E. Cor. of dwelling.



Certificate of Authorization

Stantec Consulting Ltd.

No. 1301 Date: _____

BID OPPORTUNITY 927-2011

**LOCATION APPROVED
UNDERGROUND STRUCTURES**

B.M.	40-018		
ELEV.	236.982m		
SUPV. U/G STRUCTURES COMMITTEE	DATE		
NOTE:	LOCATION OF UNDERGROUND STRUCTURES AS SHOWN ARE BASED ON THE BEST INFORMATION AVAILABLE BUT NO GUARANTEE IS GIVEN THAT ALL EXISTING UTILITIES ARE SHOWN OR THAT THE GIVEN LOCATIONS ARE EXACT. CONFIRMATION OF EXISTENCE AND EXACT LOCATION OF ALL SERVICES MUST BE OBTAINED FROM THE INDIVIDUAL UTILITIES BEFORE PROCEEDING WITH CONSTRUCTION.		
NO.	REVISIONS	DATE	BY



Stantec Consulting Ltd.

905 Waverley Street, Winnipeg, Manitoba
Tel 204-489-5900 Fax 204-453-9012

DESIGNED BY	J.K.H.	CHECKED BY	W.A.B.
DRAWN BY	K.R.	APPROVED BY	H.A.K.
HOR. SCALE:	1:500	RELEASED FOR CONSTRUCTION:	
VERTICAL:	N/A	DATE	2011.10.08

ENGINEER'S SEAL

CONSULTANT DRAWING NO.
C-213



**THE CITY OF WINNIPEG
WATER AND WASTE DEPARTMENT**

**2011 SEWER RENEWALS
BY CIPP LINING - CONTRACT 21
ROGAN DRIVE (N. LEG)**

1ST MH W. OF RADAR PL. (PL) TO
MH AT RADAR PL. (PL)

SHEET	OF
116	119
CAD FILE DRAWING NUMBER 13220c-207-766.dwg	
CITY DRAWING NUMBER 9882	

\\CD1201-F02\work_group\1112\active\111213220\drawing\402_design\sheet_files\13220c-207-766.dwg
Date: 2011-12-20 9:16am Login: Ammeter, Wes