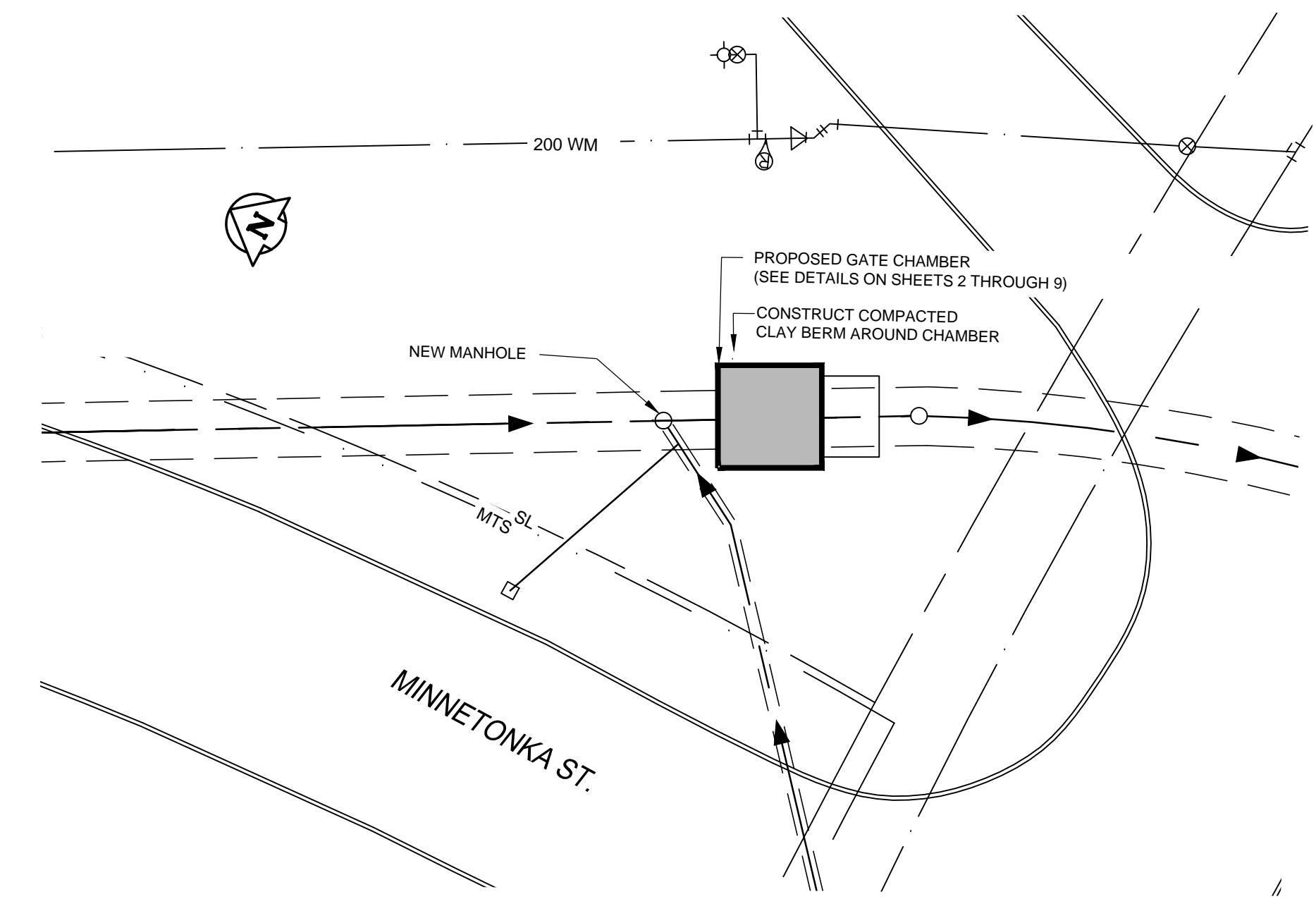


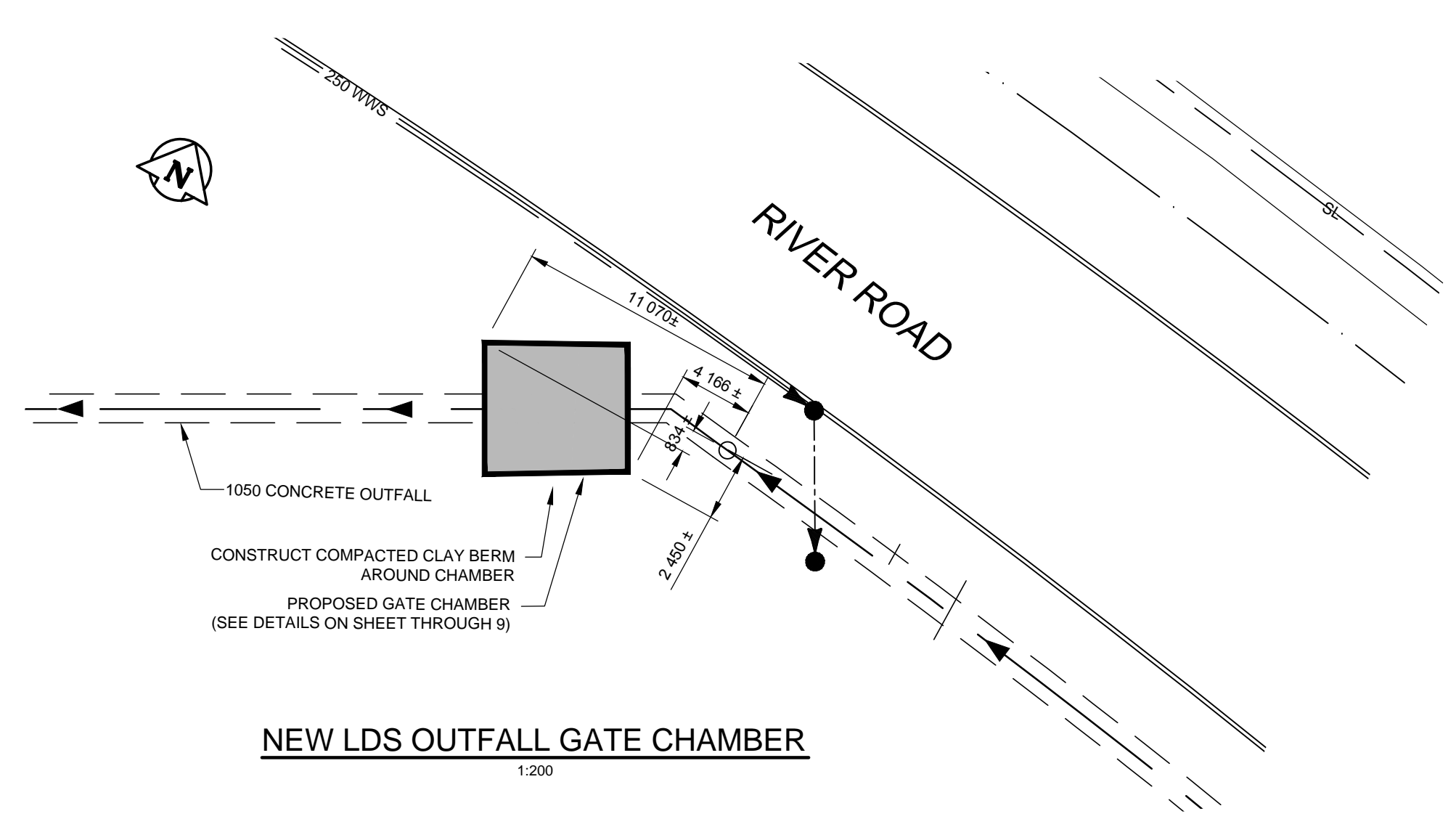
KEY PLAN
1:500

CONSTRUCTION NOTES:

1. RESTORE ALL DISTURBED GRASS AREAS WITH IMPORTED TOP SOIL AND SOD IN ACCORDANCE WITH CW 3510.
2. LEAVE SLUICE GATE IN FULL OPEN POSITION AT ALL TIMES EXCEPT WHEN ON-SITE WORKING ON GATE.
3. PROVIDE TEMPORARY PUMPING OF FLOW IN LDS AS REQUIRED DURING CONSTRUCTION.
4. PREVENT EXCAVATED MATERIAL, BACKFILL MATERIAL AND SOIL / WATER SLURRY FROM ENTERING LDS OUTFALL TO THE RIVER.
5. DO NOT REMOVE EXISTING TREES UNLESS NOTED OTHERWISE. PROVIDE TREE PROTECTION IN ACCORDANCE WITH SPECIFICATIONS.
6. CONFIRM LOCATION AND ELEVATION OF EXISTING LDS BEFORE CONSTRUCTION COMMENCES.

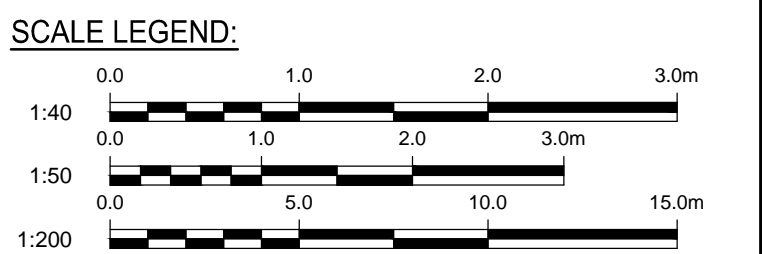


LDS OUTFALL GATE CHAMBER ADDITION
1:200



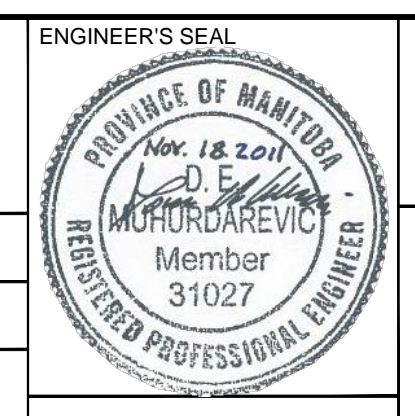
NEW LDS OUTFALL GATE CHAMBER
1:200

APEGM
Certificate of Authorization
MMM Group Limited
No. 4531 Date: 11.11.18



METRIC
WHOLE NUMBERS INDICATE MILLIMETRES
DECIMALIZED NUMBERS INDICATE METRES

DESIGNED BY: MM		CHECKED BY: DM/CDP	
DRAWN BY: KDB		APPROVED BY: DM	
HOR. SCALE: 1:200		RELEASED FOR CONSTRUCTION	
VERT. SCALE: 1:40		DATE: 2011.11.18	
1 REVISIONS		11.11.18 DM	
No. REVISIONS		DATE BY DATE	



THE CITY OF WINNIPEG
WASTE AND WATER DEPARTMENT
Winnipeg

OUTFALL GATE CHAMBERS CONSTRUCTION & UPGRADES
MINNETONKA STREET & RIVER ROAD

CONSULTANT DRAWING No.: 5511125-1
SHEET 1 OF 10
CITY DRAWING No.: LD-5707

BID OPPORTUNITY: 938-2011
PLOT DATE: 2011.11.18
SITE PLAN

Last saved November 18, 2011 - 11:27 AM by BERNARD DINK
P:\5511125-1\5511125-1\Minnetonka Gate Chambers Construction\MM Drawing\551125 minnetonka gate chambers_site plan_11117.dwg

NOTE: These design documents are prepared solely for the use by the party with whom the design professional has entered into a contract and there are no representations of any kind made by the design professional to any party with whom the design professional has not entered into a contract.