

File Name: P:\Projects\2010\10-0107-23\Doc.Control\ToBeIssued\DWG\940-2011\_Drawing\_000-RO.dwg - Job: 000 Plotted By: GNelson 11/08/2011 [Tue 3:51 pm]

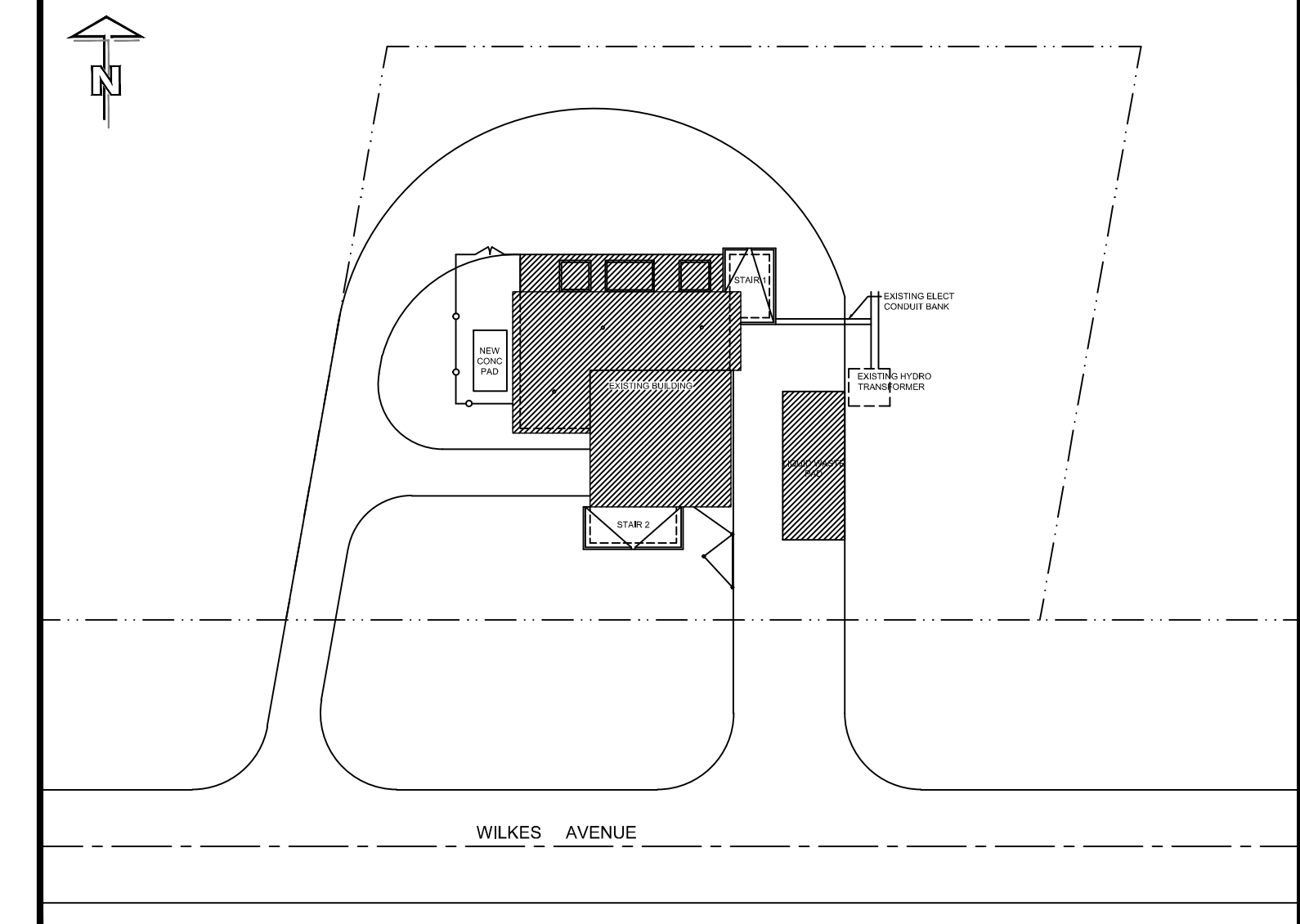


# THE CITY OF WINNIPEG

WATER AND WASTE DEPARTMENT

BID OPPORTUNITY NO. 940-2011

## Replacement of Raw Sewage Pump P-3 Perimeter Road Pumping Station



**STRUCTURAL**

City of Winnipeg DWG No.	KGS Group DWG No.	DESCRIPTION	REV.
.	0	TITLE SHEET AND DRAWING LIST	0
.	S01	GENERAL ARRANGEMENT/PLAN	0
.	S02	SECTIONS/DETAILS (1 OF 2)	0
.	S03	SECTIONS/DETAILS (2 OF 2)	0
.	S04	PUMP CONCRETE BASE UPGRADES	0

**MECHANICAL**

City of Winnipeg DWG No.	KGS Group DWG No.	DESCRIPTION	REV.
.	M01	PUMP P3 & RELATED PIPING DEMOLITION	0
.	M02	LEVEL 200 - ADDITIONAL DEMOLITION	0
.	M03	NEW PUMP P3 & RELATED PIPING	0
.	M04	LEVEL 200 - NEW PIPING SYSTEM	0

**ELECTRICAL**

City of Winnipeg DWG No.	KGS Group DWG No.	DESCRIPTION	REV.
.	E01	EXISTING SINGLE LINE DIAGRAM	0
.	E02	NEW SINGLE LINE DIAGRAM	0
.	E03	EXISTING AND NEW LEVEL 400 PLANS	0
.	E04	LEVEL 300 PLAN	0
.	E05	LEVEL 200 PLAN	0
.	E06	LEVEL 100 PLAN	0
.	.	.	.
.	E20	PROCESS & INSTRUMENTATION DIAGRAM (EXISTING CONDITIONS)	0
.	E21	PROCESS & INSTRUMENTATION DIAGRAM (NEW MODIFICATIONS)	0
.	E22	PROCESS & INSTRUMENTATION DIAGRAM (NEW MODIFICATIONS) SHEET 2	0
.	E23	PROCESS & INSTRUMENTATION DIAGRAM (NEW MODIFICATIONS) SHEET 3	0
.	E24	MISCELLANEOUS LOOPS DRAWING	0

**ELECTRICAL**

City of Winnipeg DWG No.	KGS Group DWG No.	DESCRIPTION	REV.
.	E30	STATION DISCHARGE VALVES SCHEMATIC & WIRING DIAGRAM	0
.	E31	PUMP M300PP DISCHARGE VALVE FV-M300 SCHEMATIC & WIRING DIAGRAM	0
.	E32	PUMP M300PP VFD SCHEMATIC & WIRING DIAGRAM	0
.	E33	PUMP M100PP DISCHARGE VALVE FV-M100 SCHEMATIC & WIRING DIAGRAM	0
.	E34	PUMP M200PP DISCHARGE VALVE FV-M200 SCHEMATIC & WIRING DIAGRAM	0
.	E35	PUMP M200PP MCC STARTER SCHEMATIC & WIRING DIAGRAM	0
.	E36	PUMP M810PP FLUSH WATER SCHEMATIC & WIRING DIAGRAM	0

**ELECTRICAL REFERENCE DWGS**

City of Winnipeg DWG No.	KGS Group DWG No.	DESCRIPTION	REV.
.	ER01	400HP VFD/RVMS STARTER CONNECTIONS	0
.	ER02	400HP VFD/RVMS STARTER CONTROL SECTION TERMINALS	0
WEP-680	ER03	STATION FLOOD INTERLOCK WDM 600	0
WEP-0660	ER04	MINOR ALARMS	0
WEP-0661	ER05	MAJOR ALARMS	0

