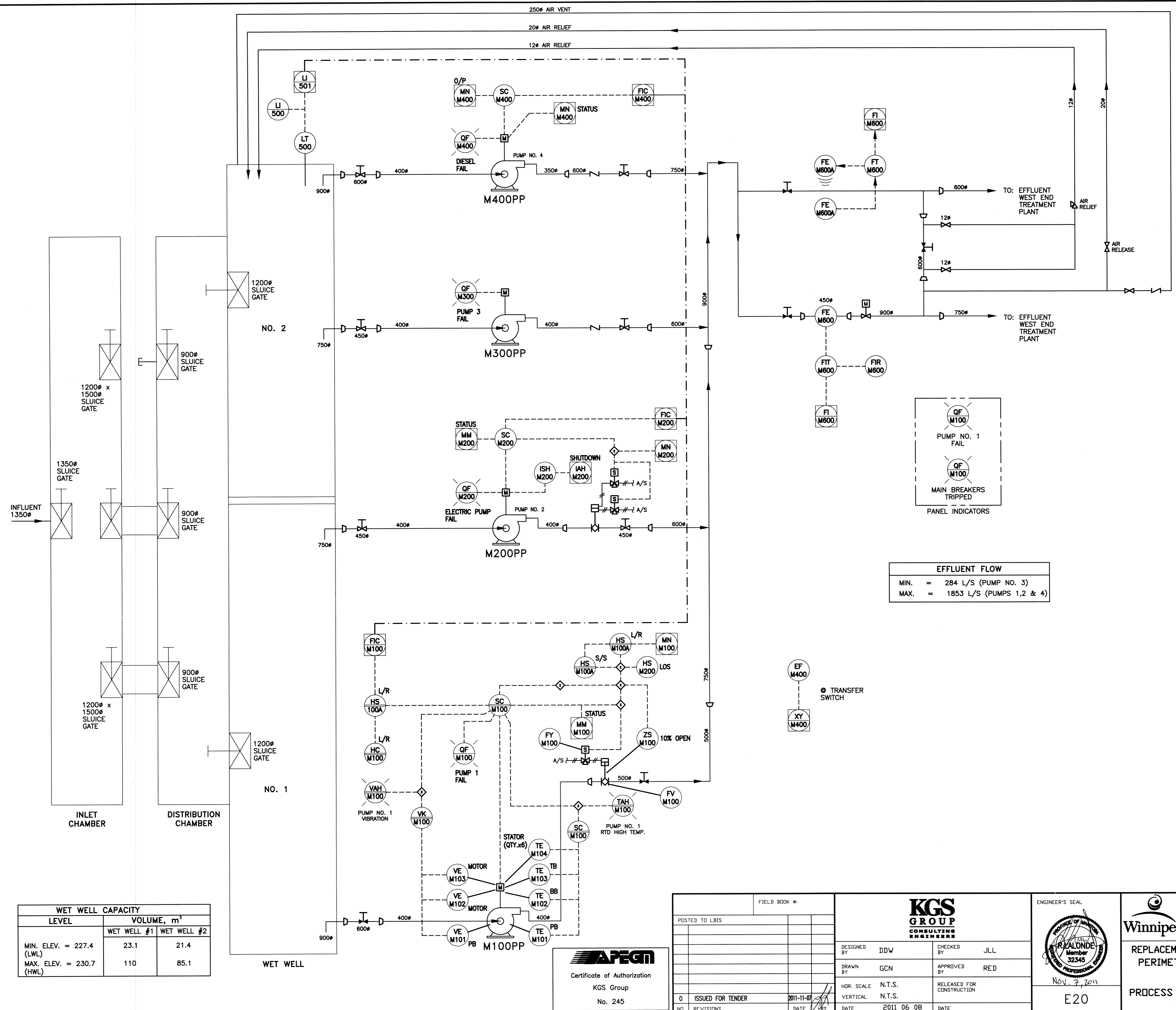


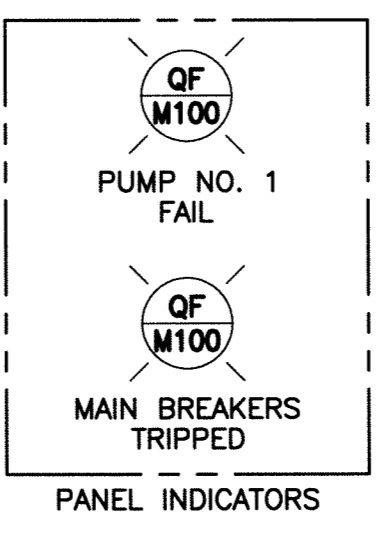
File Name: P:\Projects\2010\10-0107-23\Dec.Control\TabIssued\DWG\720-2010\_Drawing\_E20-R0.dwg - Tab: E20 Plotted By: DDeroche 11/07/2011 [Mon 3:07pm] CW-9-M564-1



**NOTES:**  
1.

**LEGEND:**

- TB TOP BEARING
- BB BOTTOM BEARING
- PB PUMP BEARING
- LOS LOCK - OFF - STOP
- L/R LOCAL / REMOTE
- S/S START / STOP



EFFLUENT FLOW	
MIN.	= 284 L/S (PUMP NO. 3)
MAX.	= 1853 L/S (PUMPS 1, 2 & 4)

PUMP M100PP	
KW	298
CAPACITY	MIN. 450 L/S MAX. 700 L/S
SPEED REG.	VFD

PUMP M200PP	
KW	473 L/S
CAPACITY	473 L/S
SPEED REG.	MAG COUPLING

PUMP M300PP	
KW	93
CAPACITY	284 L/S
SPEED REG.	FIXED SPEED

PUMP M400PP	
KW	223
CAPACITY	MIN. 300 L/S MAX. 680 L/S
DIESEL ENGINE	GOVERNOR SPEED CONTROL

WET WELL CAPACITY		
LEVEL	VOLUME, m <sup>3</sup>	
	WET WELL #1	WET WELL #2
MIN. ELEV. = 227.4 (LWL)	23.1	21.4
MAX. ELEV. = 230.7 (HWL)	110	85.1

Certificate of Authorization  
 KGS Group  
 No. 245

FIELD BOOK #:	
POSTED TO LBIS	
ISSUED FOR TENDER	2011-11-07
NO. REVISIONS	DATE

KGS GROUP CONSULTING ENGINEERS	
DESIGNED BY	DDW
CHECKED BY	JLL
DRAWN BY	GCN
APPROVED BY	RED
HDR. SCALE	N.T.S.
VERTICAL SCALE	N.T.S.
RELEASED FOR CONSTRUCTION	2011-06-08

ENGINEER'S SEAL  
  
 Nov. 7, 2011  
 E20

**THE CITY OF WINNIPEG**  
 WATER AND WASTE DEPARTMENT  
 REPLACEMENT OF RAW SEWAGE PUMP P-3  
 PERIMETER ROAD PUMPING STATION  
**ELECTRICAL**  
 PROCESS & INSTRUMENTATION DIAGRAM  
 (EXISTING CONDITIONS)

SHEET 1 OF 1  
 CITY DRAWING NUMBER