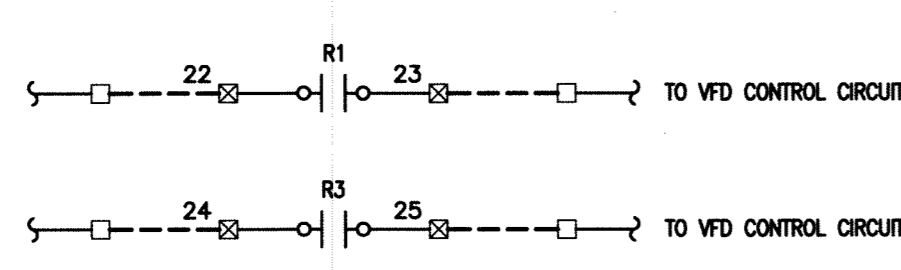
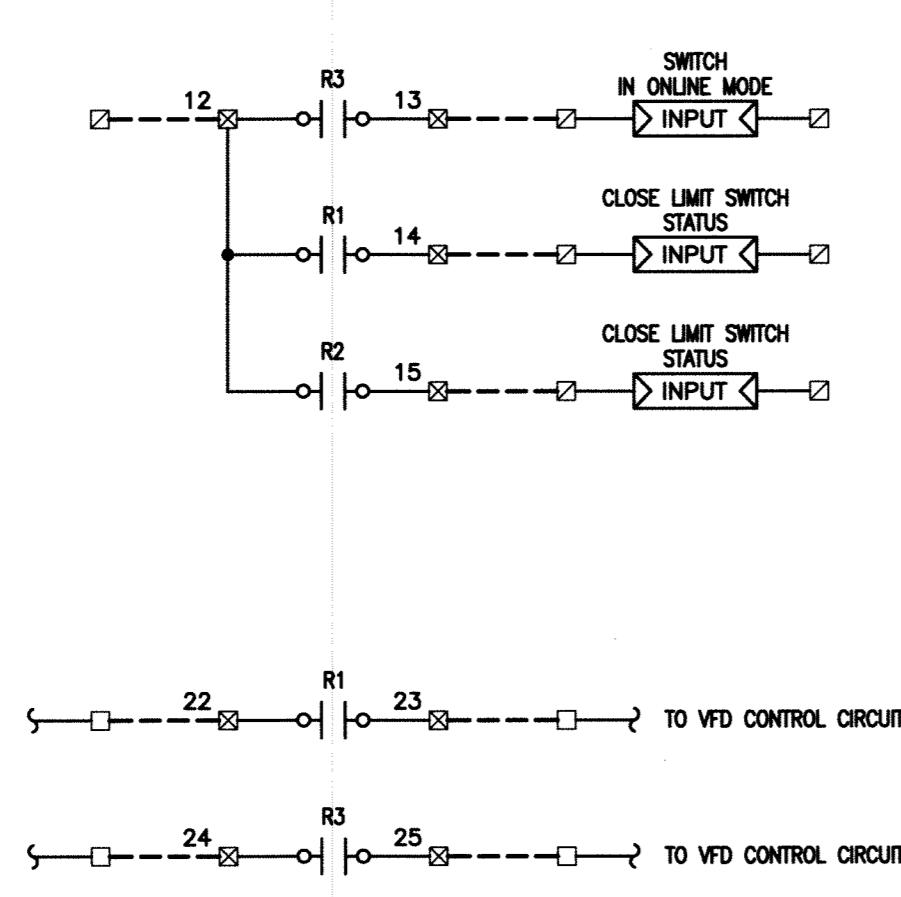
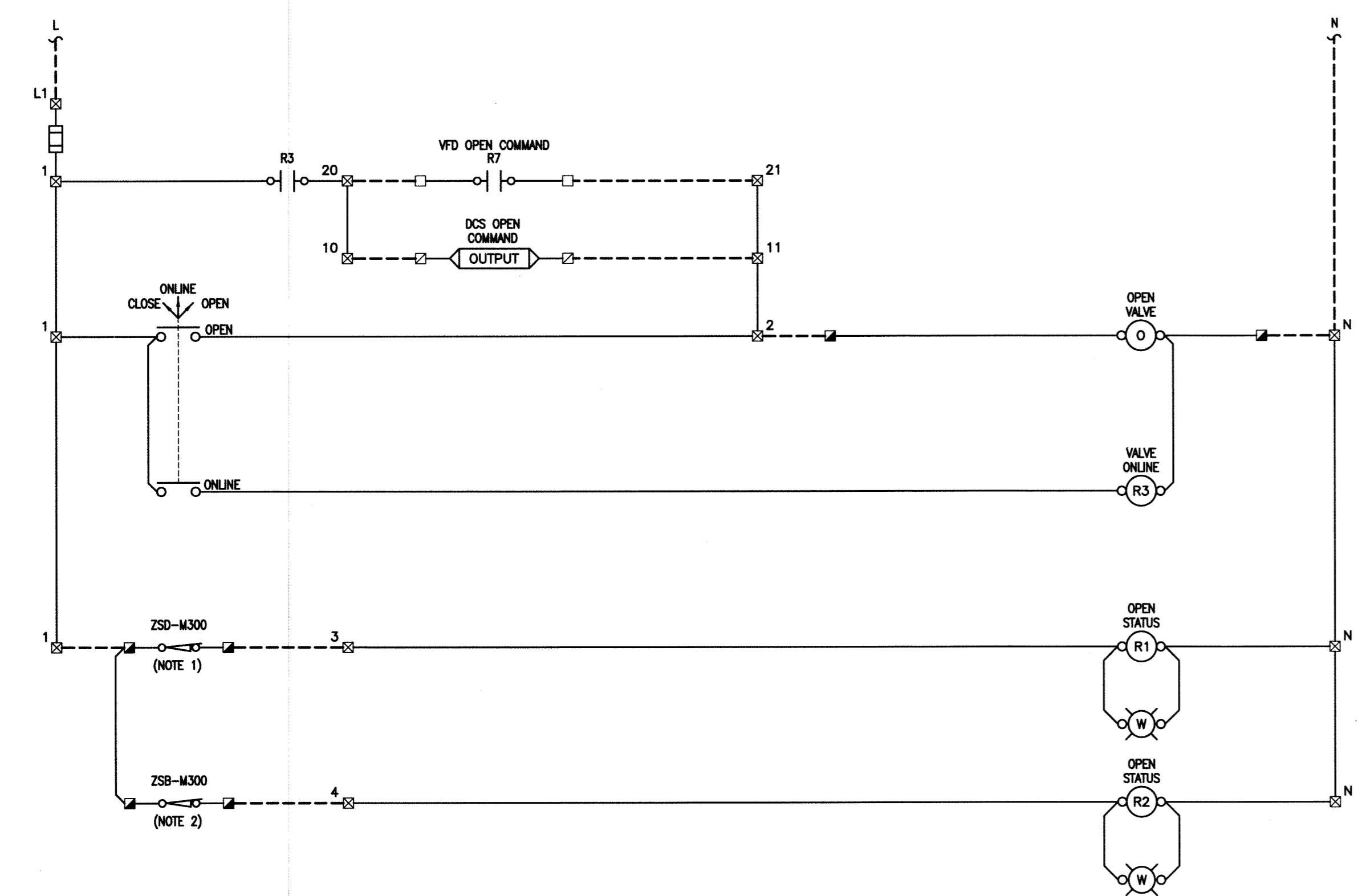
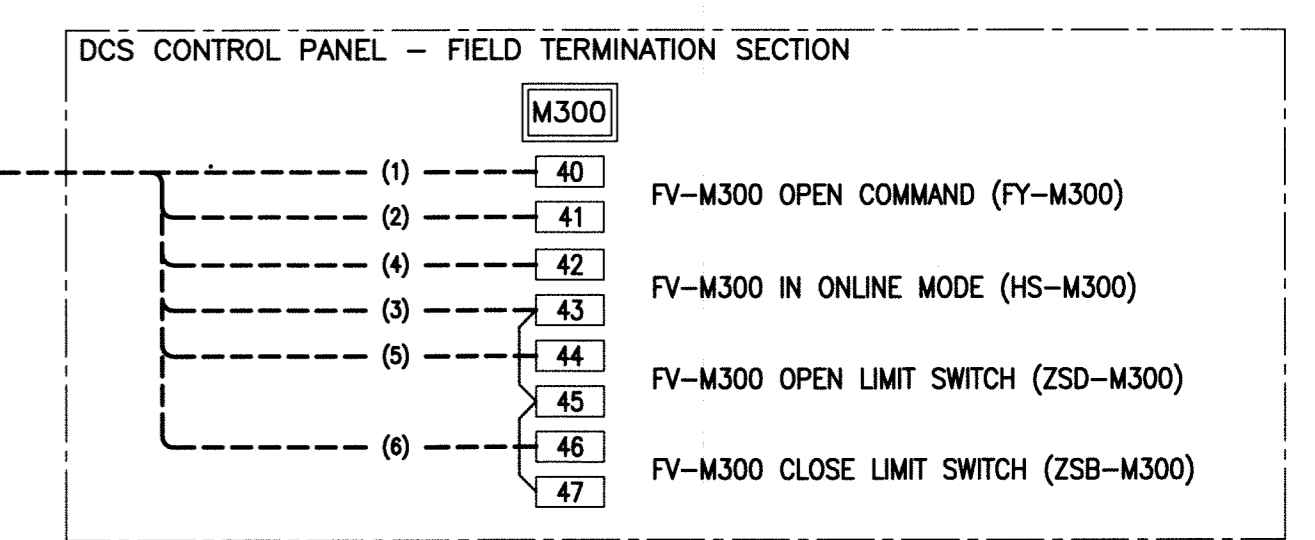
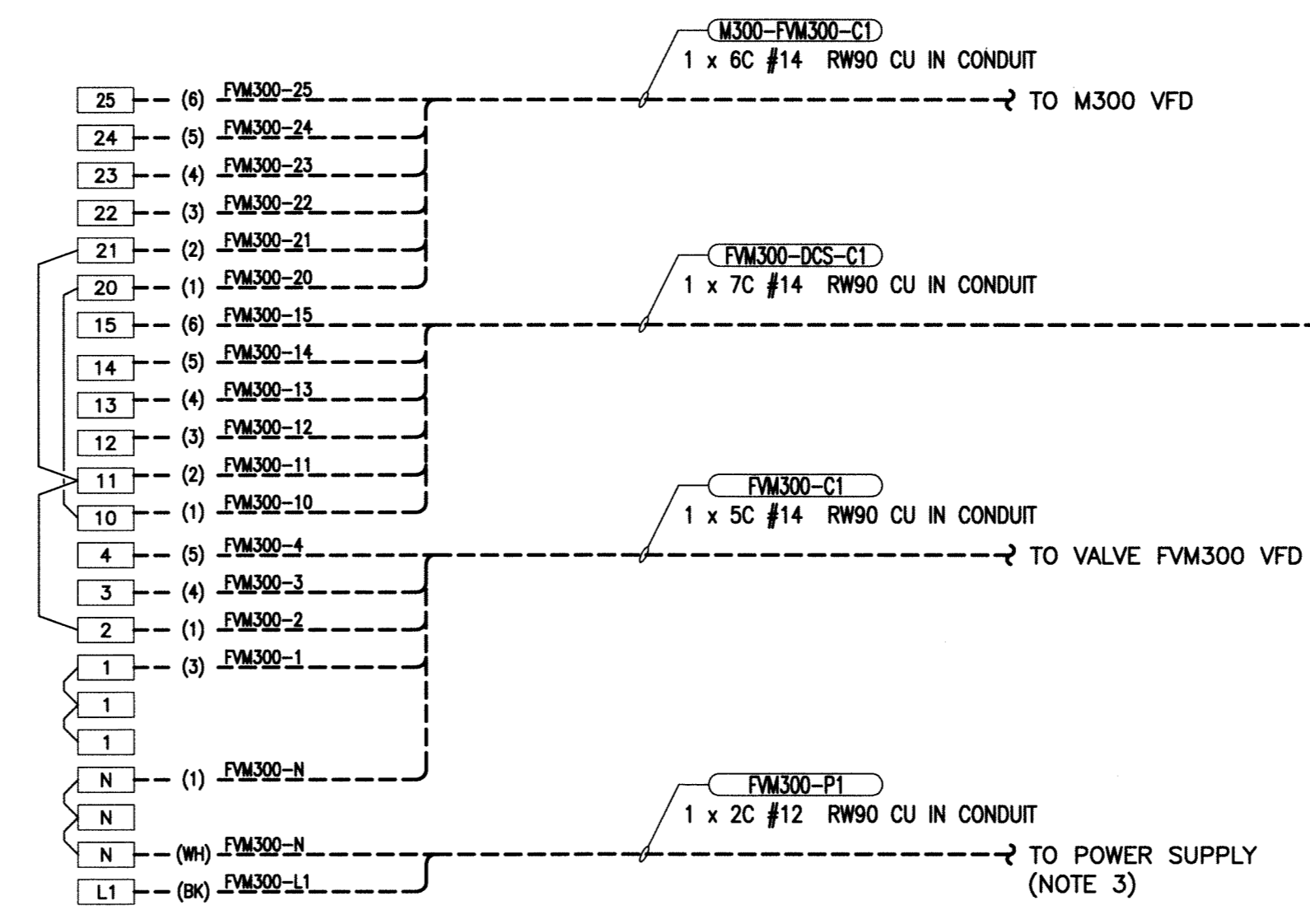


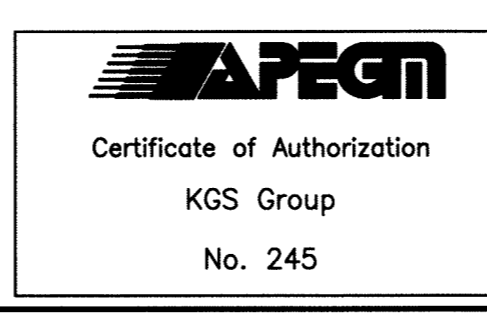
CW-9-M564-1
 File Name: P:\Projects\2010\10-0107-23\Doc.Control\ToBalsaued\DWG\720-2010_Drawing_E31-R0.dwg - Tab: E31 Plotted By: DDeroche 11/07/2011 [Mon 3:04pm]



- NOTES:**
- LIMIT SWITCH CONTACT CLOSING TO PROVE VALVE IN THE OPEN POSITION.
 - LIMIT SWITCH CONTACT CLOSING TO PROVE VALVE IN THE CLOSED POSITION.
 - CONTRACTOR TO EXTEND TO THE NEAREST AVAILABLE POWER PANEL. PROVIDE A NEW 15A SINGLE POLE BREAKER WITHIN THE PANEL.



- LEGEND**
- VFD CONTROL ENCLOSURE TERMINALS
 - VALVE TERMINALS
 - VFD TERMINALS
 - DCS TERMINALS
 - VALVE ENCLOSURE TERMINALS
 - FIELD WIRING
 - PANEL WIRING
 - () CONDUCTOR IDENTIFICATION
 - WIRE CONNECTION
 - PILOT LIGHT
 - ◁ OUTPUT ▷ PLC OUTPUT
 - ▷ INPUT ◁ PLC INPUT



B.M. ELEV.	FIELD BOOK #	KGS GROUP CONSULTING ENGINEERS		ENGINEER'S SEAL
POSTED TO LBIS				
DESIGNED BY	DDW	CHECKED BY	JLL	E31
DRAWN BY	GCN	APPROVED BY	RED	
HDR. SCALE	N.T.S.	RELEASED FOR CONSTRUCTION	N.T.S.	
0 ISSUED FOR TENDER	2011-11-07	DATE	2011 05 20	
NO. REVISIONS	DATE	BY	DATE	

THE CITY OF WINNIPEG
WATER AND WASTE DEPARTMENT

REPLACEMENT OF RAW SEWAGE PUMP P-3 PERIMETER ROAD PUMPING STATION
ELECTRICAL
 PUMP M300PP DISCHARGE VALVE FV-M300
 SCHEMATIC & WIRING DIAGRAM

SHEET 1 OF 1
CITY DRAWING NUMBER